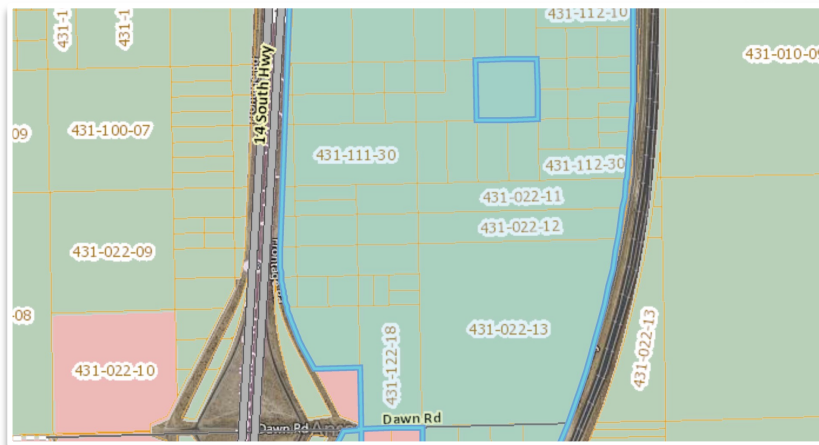


Sierra Highway 10 Acres RESIDENTIAL LAND FOR SALE



RESIDENTIAL LAND FOR SALE

Type: Land:

Size: 10 acres

Location: Sierra Highway, Rosamond CA

Price reduced to: \$39,000

Zoned: Residential / Agriculture

APN: 431-112-16-00-5



BUENGER
COMMERCIAL REAL ESTATE, INC.

3600 South Harbor Blvd. Oxnard CA, 93035. Phone: (805) 985-1007 Fax: (805) 725-3122
Info@BuengerInc.com www.BuengerInc.com
CalDRE License: 1378022