

FOR LEASE

K-3K SF FLEX/RETAIL
SPACES

16711-16721 Hollister St,
Houston, TX 77066



PROPERTY HIGHLIGHTS

1	3,000 SF,	Suite E, Bldg. 1
2	3,000 SF,	Suite H, Bldg. 2
3	2,000 SF,	Suite C, Bldg. 3
4	2,800 SF,	Suite P, Bldg. 8

- 18'-22' Clear Height
- Grade Level OH Doors
- Fully Gated
- 3-Phase, 240V Power
- Contact Broker for Pricing



RASC INVESTMENTS LP

6603 THEALL ROAD
HOUSTON TX. 77066
RASCINVESTMENTS@GMAIL.COM

Contacts

Anu Chander 281-433-0003

Suite E, Bldg. 1 (Retail) - 16711 Hollister St

3,000

Square Feet

900

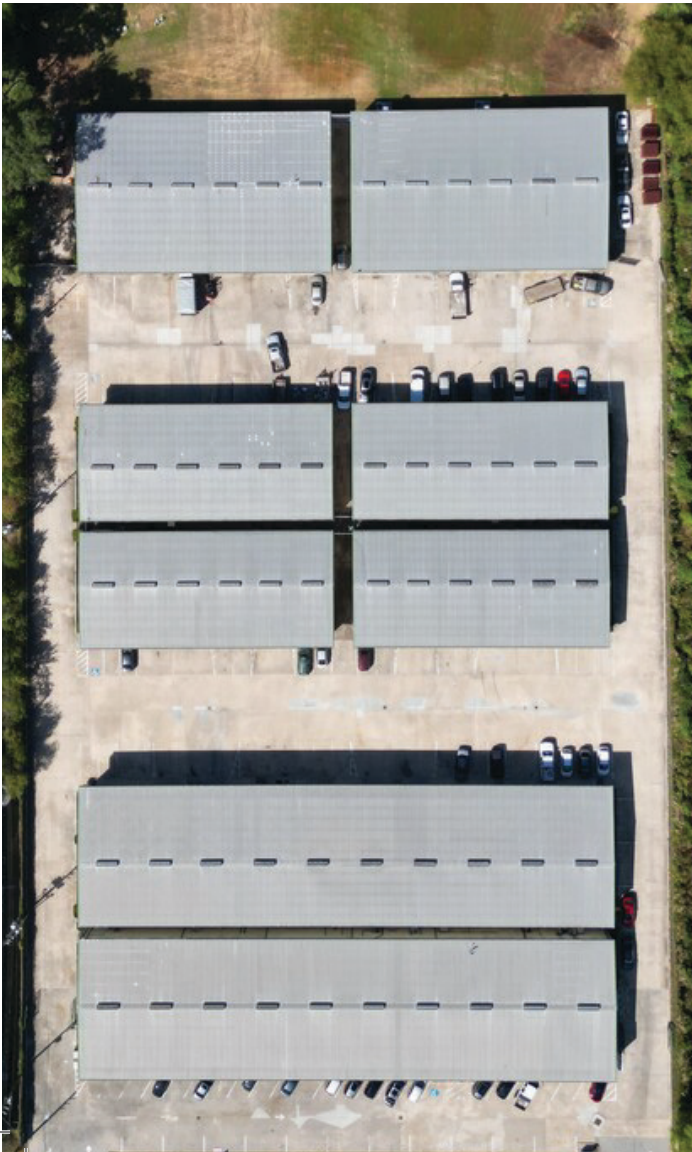
SF Office



Solid Deck Roof Storage



Hollister Frontage



Suite C, Bldg. 3 (Flex) - 16721 Hollister ST

2,000

Square Feet

800

SF Office

- Lease rates on 3-5year terms from \$0.85-1.10 (NNN)
- High traffic Count, Hollister is a bypass to Beltway 8
- 3-Phase 240V Power
- 2,000 - 4,000 sq ft units in a Industrial park environment with Hollister St Frontage, Management onsite
- 18'-22' Clear Height, Grade Level OH Doors
- Fully Fenced, electronic entry w/Keypad

16711 & 16721 Hollister St Houston, TX 77066

HOLLISTER STREET (FORMERLY KNOWN AS DUNCAN ROAD)

BUILDING - 1

SUITE "A"	SUITE "B" 9,000 TOTAL SQ HIGH END SPECIALITY FOOD STORE BUILDOUT (RETAIL)	SUITE "C"	SUITE "D" 3,000 TOTAL SQ ALL OFFICE BUILDOUT (RETAIL)	SUITE "E" 3,000 TOTAL SQ APPROX 900SQ OFFICE & SOLID DECK ROOF STORAGE (RETAIL)
------------------	--	------------------	--	---

BUILDING - 2

SUITE "J" 3,000 TOTAL SQ APPROX 900SQ OFFICE VERY NICE HIGH END BUILDOUT	SUITE "I" 3,000 TOTAL SQ APPROX 900SQ OFFICE VERY NICE HIGH END BUILDOUT	SUITE "H" 3,000 TOTAL SQ NO OFFICE, CAN BUILD UP TO 350SQ AT NO CHARGE	SUITE "G" 3,000 TOTAL SQ APPROX 700SQ OFFICE	SUITE "F" 3,000 TOTAL SQ APPROX 180SQ OFFICE
--	--	---	--	--

BUILDING - 4

SUITE "F" 2,000 TOTAL SQ 350SQ OFFICE	SUITE "E" 2,000 TOTAL SQ 350SQ OFFICE	SUITE "D" 2,000 TOTAL SQ 350SQ OFFICE	SUITE "C" 2,000 TOTAL SQ APPROX 800SQ OFFICE VERY NICE HIGH END OFFICE	SUITE "B" 2,000 TOTAL SQ NO OFFICE CURRENTLY COMBINED WITH SUITE A	SUITE "A" 2,000 TOTAL SQ 500SQ OFFICE
---	---	---	---	---	---

BUILDING - 3

BUILDING - 6

SUITE "L" 2,000 TOTAL SQ 1100SQ OFFICE 900SQ PROCESS AREA (AC)	SUITE "K" 2,000 TOTAL SQ 2000SQ PROCESS AREA (AC)	SUITE "J" 2,000 TOTAL SQ 1000SQ OFFICE	SUITE "I" 2,000 TOTAL SQ 350SQ OFFICE PARTIAL AC 700SQ FT PROCESS AREA	SUITE "H" 2,000 TOTAL SQ 350SQ OFFICE	SUITE "G" 2,000 TOTAL SQ 350SQ OFFICE
---	--	--	--	---	---

BUILDING - 5

BUILDING - 8

SUITE "Q" 2,800 TOTAL SQ 350SQ OFFICE	SUITE "Q" 2,800 TOTAL SQ 350SQ OFFICE ALL AC WAREHOUSE	SUITE "O" 2,800 TOTAL SQ 350SQ OFFICE ALL AC WAREHOUSE	SUITE "N" 4,200 TOTAL SQ 350SQ OFFICE	SUITE "M" 4,200 TOTAL SQ 800SQ OFFICE
---	---	---	--	--

BUILDING - 7