



# 201 West 148th Street

As Exclusive Agent, DE Commercial Is  
Pleased To Offer The Following Retail  
Space For Lease.

**MCKENZIE  
RYAN** TEAM  
AT DOUGLAS ELLIMAN  
REAL ESTATE

575 MADISON AVENUE, NEW YORK, NEW YORK 10022

[elliman.com](http://elliman.com)

## LOCATION

201 W. 148TH Street

## SPACE

Ground Floor: 2,305 square feet

Lower Level Storage Available

## SQUARE FEET

2,305

## PRICE

Upon Request

## TERM

Negotiable

## POSSESSION

Immediate

## FEATURES

- 2,305 square feet of space (can be divisible)
- Ground floor corner location
- Ideal for retail or commercial purposes
- Former Not-for-profit Administrative and Office Space
- Proximity to major highways, bridges and mass transit for convenient access
- Abundant windows providing ample natural light
- Prominent street frontage ensuring high visibility along West 148th Street and Adam Clayton Powell Blvd.



# 201 West 148th Street

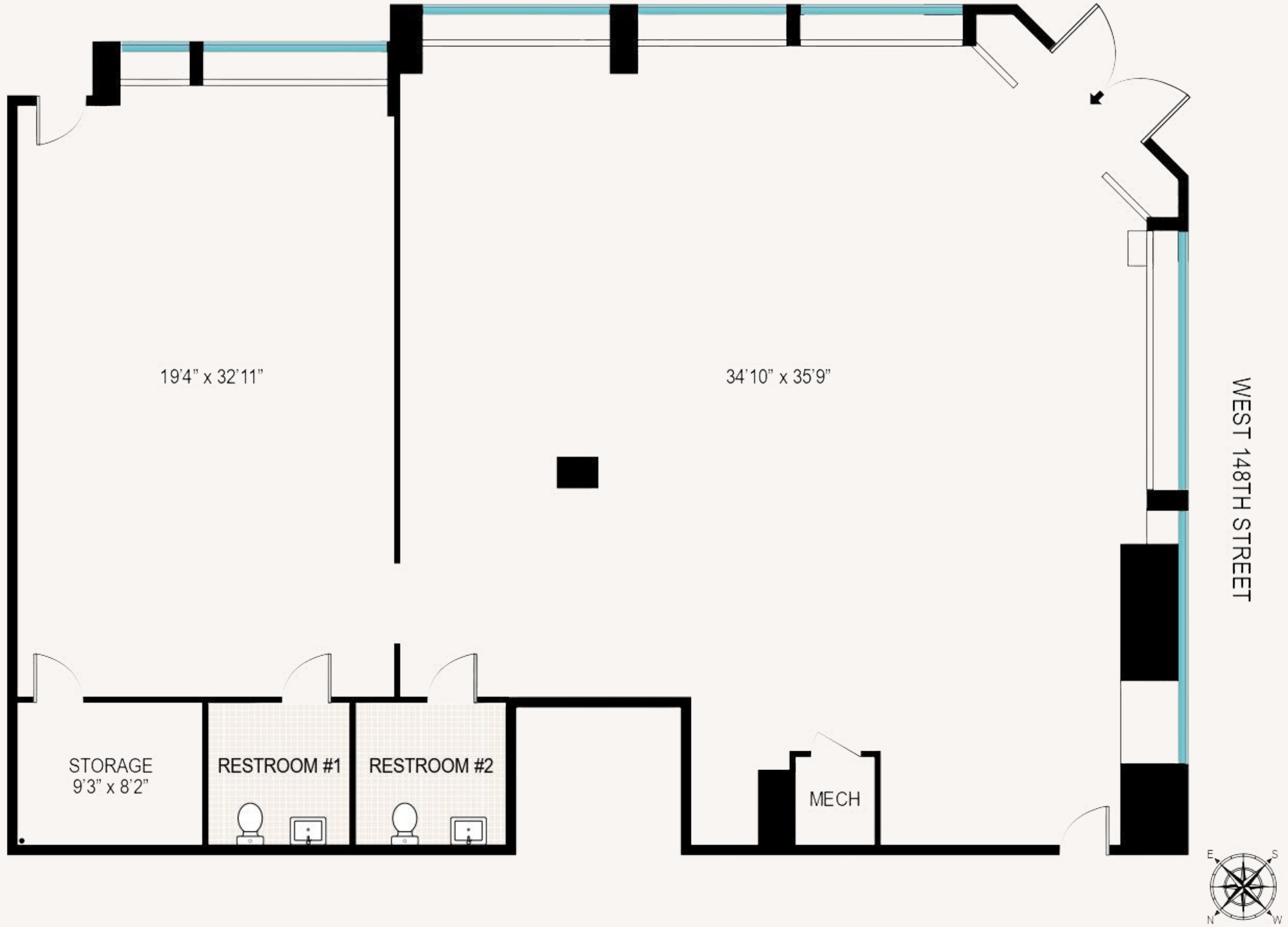
An exceptional opportunity to lease a 2,305 square foot ground floor corner space in the heart of Upper Manhattan. This location offers multiple possibilities for retail or commercial use and is conveniently situated between the Macombs Dam and the 145th Street bridge near multiple major highways and mass transit, ensuring convenient access, the potential for high foot traffic and excellent visibility along Adam Clayton Powell Boulevard.

The space, formerly utilized as an office for a not-for-profit organization, boasts a strategic corner position, providing ample natural light and prominent street frontage. Its adaptable layout and open floor plan make it suitable for a variety of businesses, including standard retail, professional offices, or service-oriented ventures.

This is an unparalleled opportunity to establish or grow your business in this historic, dynamic and thriving neighborhood. Whether you envision a boutique storefront, a professional office space, or a service-oriented establishment, this versatile space offers the perfect canvas to bring your vision to life.

# FLOORPLAN

ADAM CLAYTON POWELL BOULEVARD





# 201 West 148th Street

FOR FURTHER INFORMATION AND INSPECTION,  
PLEASE CONTACT:



**WILLIAM ETHERIDGE**

Associate Real Estate Broker  
william.etheridge@elliman.com  
M: 646.837.2641 | O: 212.692.6111



**MCKENZIE RYAN**

Associate Real Estate Broker  
mckenzie.ryan@elliman.com  
M: 917.858.1828 | O: 212.891.8500  
@mckenzie\_ryan



© 2024 DOUGLAS ELLIMAN COMMERCIAL, LLC. ALL RIGHTS RESERVED. THE INFORMATION CONTAINED IN THIS DOCUMENT IS PROPRIETARY TO DOUGLAS ELLIMAN COMMERCIAL, LLC AND SHALL BE USED SOLELY FOR THE PURPOSES OF EVALUATING THIS PROPOSAL. ALL SUCH DOCUMENTATION AND INFORMATION REMAINS THE PROPERTY OF DOUGLAS ELLIMAN COMMERCIAL, LLC AND SHALL BE KEPT CONFIDENTIAL. REPRODUCTION OF ANY PART OF THIS DOCUMENT IS AUTHORIZED ONLY TO THE EXTENT NECESSARY FOR ITS EVALUATION.