

# THE CAMPUS AT WESTCHASE



10300 Town Park Drive, Houston, TX 77072

**CLASS A OFFICE SPACE  
AVAILABLE FOR LEASE**

1,500 - 93,000 RSF AVAILABLE



Jones Lang LaSalle Brokerage, Inc.



# PROPERTY HIGHLIGHTS

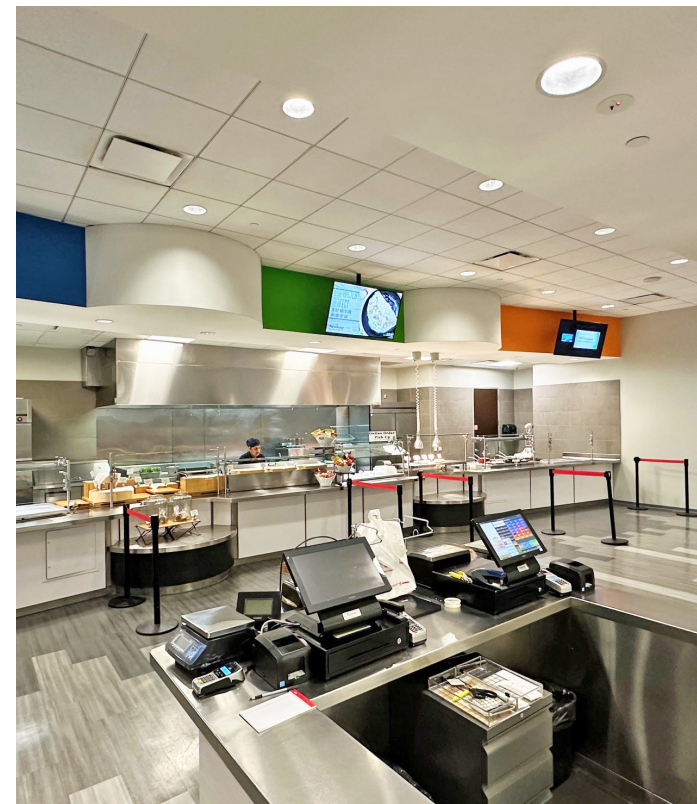
- 123,330 Total RSF Available
- Southeast Building – 93,161 RSF Available
- South Building – 1,500-25,171 RSF Available
- Southeast Building – Built in 2014
- South Building – Built in 2007
- 20 minutes to IAH airport
- 20 minutes to Hobby Airport
- 5 minutes to City Centre

# AMENITIES

- Onsite Fitness Center with showers and lockers
- Onsite Cafeteria
- Expansive Conferencing Center
- Outdoor Courtyard and Green Space
- 24/7 Security
- 4/1,000 Structured Garage Parking
- Building Signage Available
- Southeast Building – Generator Available









# AMENITIES WITHIN A 5-MILE RADIUS

50 RESTAURANTS | 50 RETAIL | 8 HOTELS

City Centre  
**5 MIN DRIVE**

Starbucks  
Jimmy Johns

Westpark Tollway

Beltway 8

South Building

Southeast Building

Structured Garage





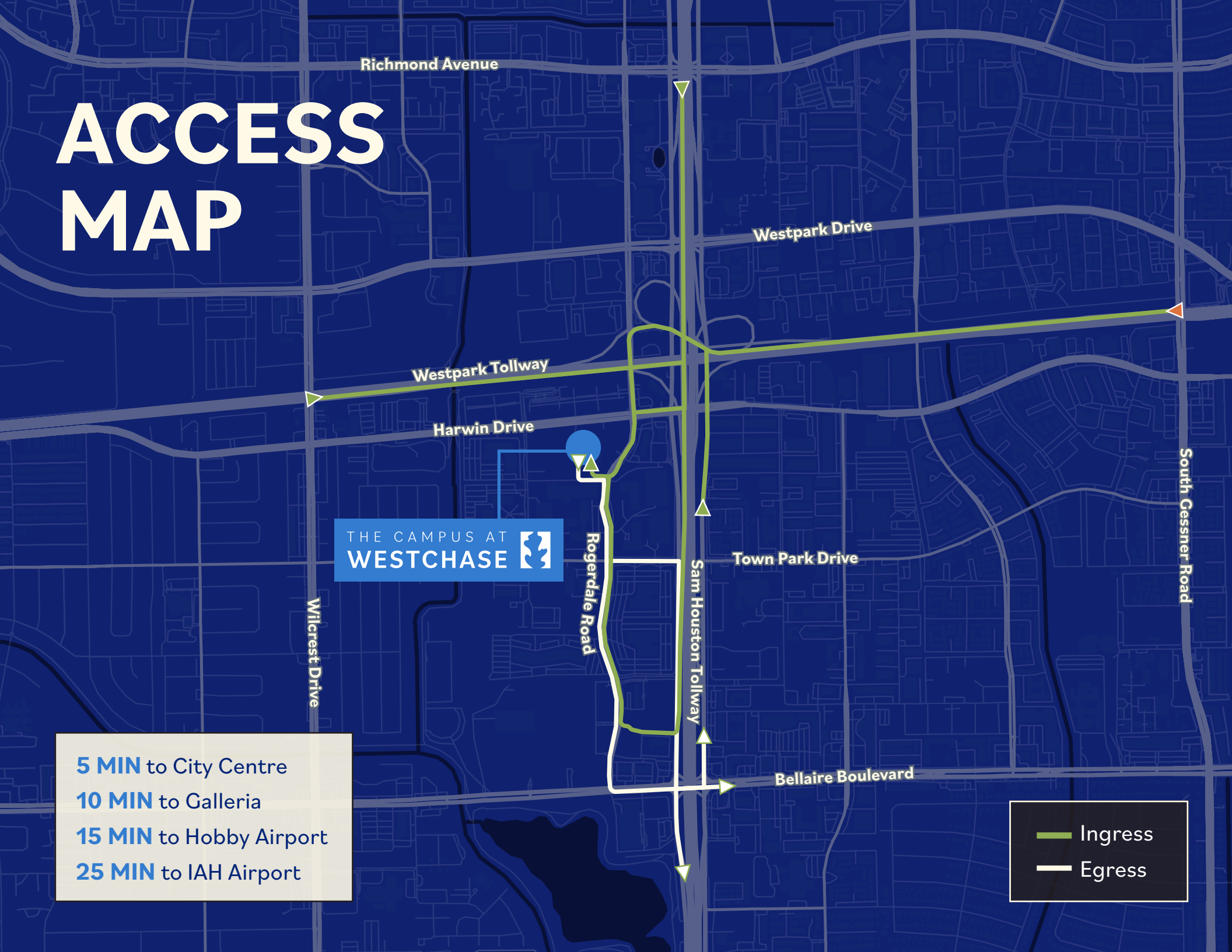
# ACCESS MAP

THE CAMPUS AT  
**WESTCHASE**



**5 MIN** to City Centre  
**10 MIN** to Galleria  
**15 MIN** to Hobby Airport  
**25 MIN** to IAH Airport

— Ingress  
— Egress





10300 Town Park Drive, Houston, TX 77072

**CLASS A OFFICE SPACE AVAILABLE FOR LEASE**

THE CAMPUS AT  
**WESTCHASE**



**MATT PRUITT**

Senior Vice President

+1 713 888 4089

[matt.pruitt@jll.com](mailto:matt.pruitt@jll.com)

**CHRISTIAN CANION**

Vice President

+1 713 888 4090

[christian.canion@jll.com](mailto:christian.canion@jll.com)



Although information has been obtained from sources deemed reliable, neither Owner nor JLL makes any guarantees, warranties or representations, express or implied, as to the completeness or accuracy as to the information contained herein. Any projections, opinions, assumptions or estimates used are for example only. There may be differences between projected and actual results, and those differences may be material. The Property may be withdrawn without notice. Neither Owner nor JLL accepts any liability for any loss or damage suffered by any party resulting from reliance on this information. If the recipient of this information has signed a confidentiality agreement regarding this matter, this information is subject to the terms of that agreement. © 2024 Jones Lang LaSalle IP, Inc. All rights reserved.