



Publix FOOD & PHARMACY

For Lease | Retail

The Resrve at Boca Raton

9704-9942 Clint Moore Road, Boca Raton, FL 34996

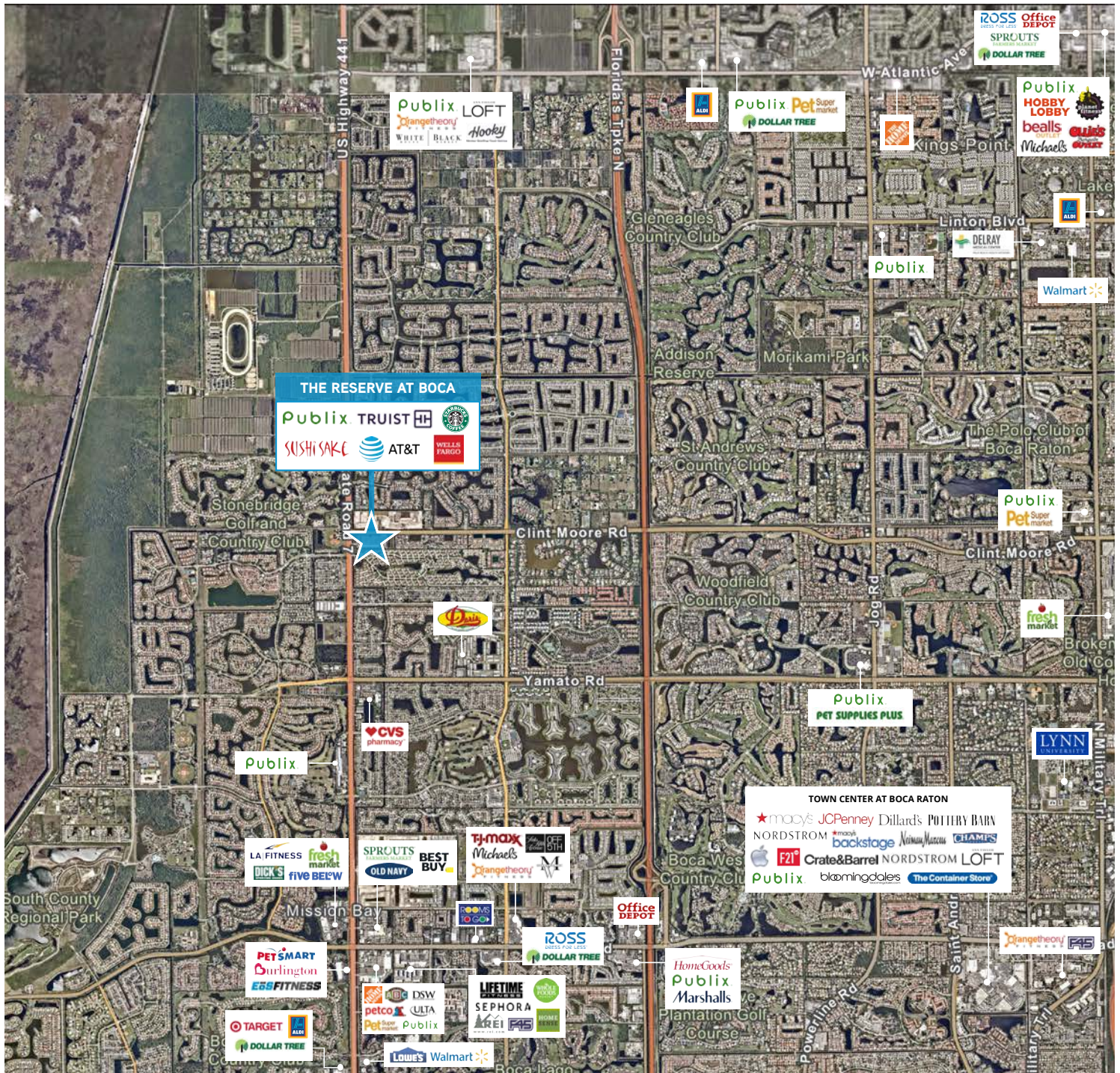
Property Features

- 1,125 SF - 2,964 SF retail space available
- Neighborhood center anchored by one of the highest performing Publix locations in South Florida
- Surrounded by an affluent community with an average household income of \$178,000 within 3 miles
- $\pm 16,900$ vpd on Clint Moore Road
- $\pm 43,500$ vpd on US-441
- GLA: 140,611 SF

Current Tenant Spotlight



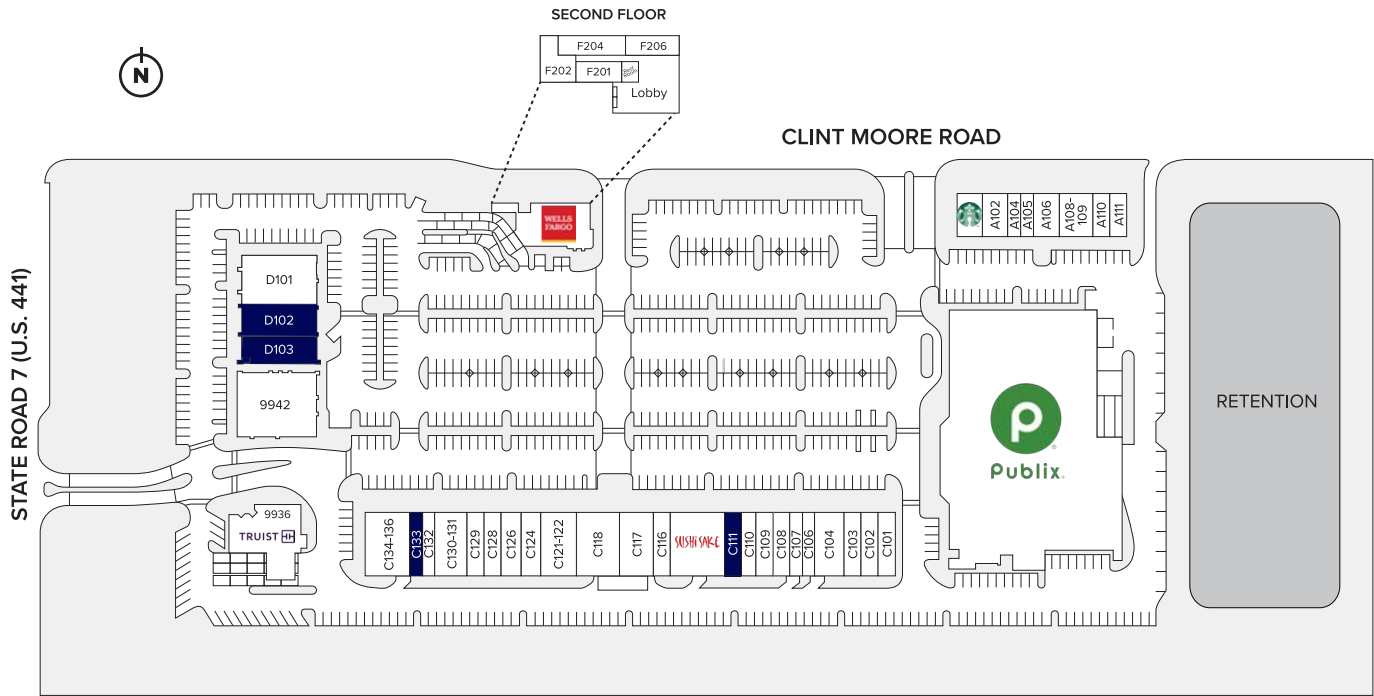
The Reserve | Area Retailers



This document has been prepared by Colliers for advertising and general information only. Colliers makes no guarantees, representations or warranties of any kind, expressed or implied, regarding the information including, but not limited to, warranties of content, accuracy and reliability. Any interested party should undertake their own inquiries as to the accuracy of the information. Colliers excludes unequivocally all inferred or implied terms, conditions and warranties arising out of this document and excludes all liability for loss and damages arising there from. This publication is the copyrighted property of Colliers and /or its licensor(s). © 2025. All rights reserved. This communication is not intended to cause or induce breach of an existing listing agreement. Colliers International Florida, LLC.

www.colliers.com

The Reserve | Site Plan



Suite	Tenant	Size (SF)	Suite	Tenant	Size (SF)	Suite	Tenant	Size (SF)
A101	Starbucks	1,500 SF	C107	Boca Family Eye Care	1,125 SF	C130-131	Star Wine & Spirits	3,000 SF
A102	It's All Greek	1,500 SF	C108	Papa Johns	1,500 SF	C132	Ice Cream, Yogurt, & Boba	1,125 SF
A104	Clint Moore Barber	750 SF	C109	Sylvie Gray	1,500 SF	C133	Available	1,125 SF
A105	Dee Eyebrow Threading	754 SF	C110	Palm Beach Puppies	1,500 SF	C134-136	Cafe Landwer	3,375 SF
A106	Vault Yoga	1,500 SF	C111	Available	1,500 SF	D101	Vault Fitness	5,000 SF
A108-109	Fit Foodz To Go	2,000 SF	C112	Sushi Sake	4,350 SF	D102	Available	2,700 SF
A110	Body 20	1,000 SF	C116	AT&T	1,500 SF	D103	Available	2,964 SF
A111	Goodwill	1,000 SF	C117	Spatique Nails	1,937 SF	E9942	Ben's Deli	7,000 SF
B9720	Publix	51,673 SF	C118	Villa Rosano Italian	3,750 SF	F100	Wells Fargo	3,500 SF
C101	Cache Cleaners	1,500 SF	C121-122	Way Beyond Bagels	3,750 SF	F201	Tomalty Dental Care	1,721 SF
C102	Antonio Custom Tailor	1,500 SF	C124	Baciami Moda	2,250 SF	F202-206	William De Marchi Medical	5,487 SF
C103	Gooming.dog	1,500 SF	C126	Salon Blu	2,250 SF	F9936	Truist Bank	3,500 SF
C104	Frank Pine Salon	2,250 SF	C128	First Impression Doors	1,695 SF			
C106	Bolanos Veterinary	1,125 SF	C129	Elite Travel	1,355 SF			

This document has been prepared by Colliers for advertising and general information only. Colliers makes no guarantees, representations or warranties of any kind, expressed or implied, regarding the information including, but not limited to, warranties of content, accuracy and reliability. Any interested party should undertake their own inquiries as to the accuracy of the information. Colliers excludes unequivocally all inferred or implied terms, conditions and warranties arising out of this document and excludes all liability for loss and damages arising there from. This publication is the copyrighted property of Colliers and /or its licensor(s). © 2025. All rights reserved. This communication is not intended to cause or induce breach of an existing listing agreement. Colliers International Florida, LLC.

The Reserve | Demographics



Population (2025)

1-Mile: 10,707
3-Miles: 56,257
5-Miles: 154,992



Median Age (2025)

1-Mile: 46.8
3-Miles: 52.8
5-Miles: 55.7



Total Households (2025)

1-Mile: 3,850
3-Miles: 24,203
5-Miles: 69,593



Average HH Income (2025)

1-Mile: \$178,139
3-Miles: \$176,090
5-Miles: \$157,362

Sabrina Stimming
Executive Vice President
+1 305 779 3157
sabrina.stimming@colliers.com

Ariel Davis
Associate Vice President
+1 305 779 3152
ariel.davis@colliers.com

Colliers International Florida, LLC
801 Brickell Avenue, Suite 900
Miami, FL 33131
colliers.com

