

# FOR LEASE HIGH-BAY INDUSTRIAL

1920 Campostella Road, Chesapeake, VA 23324 | PORT OF VIRGINIA



## Up to ± 224,620 Sq. Ft. (Subdividable)

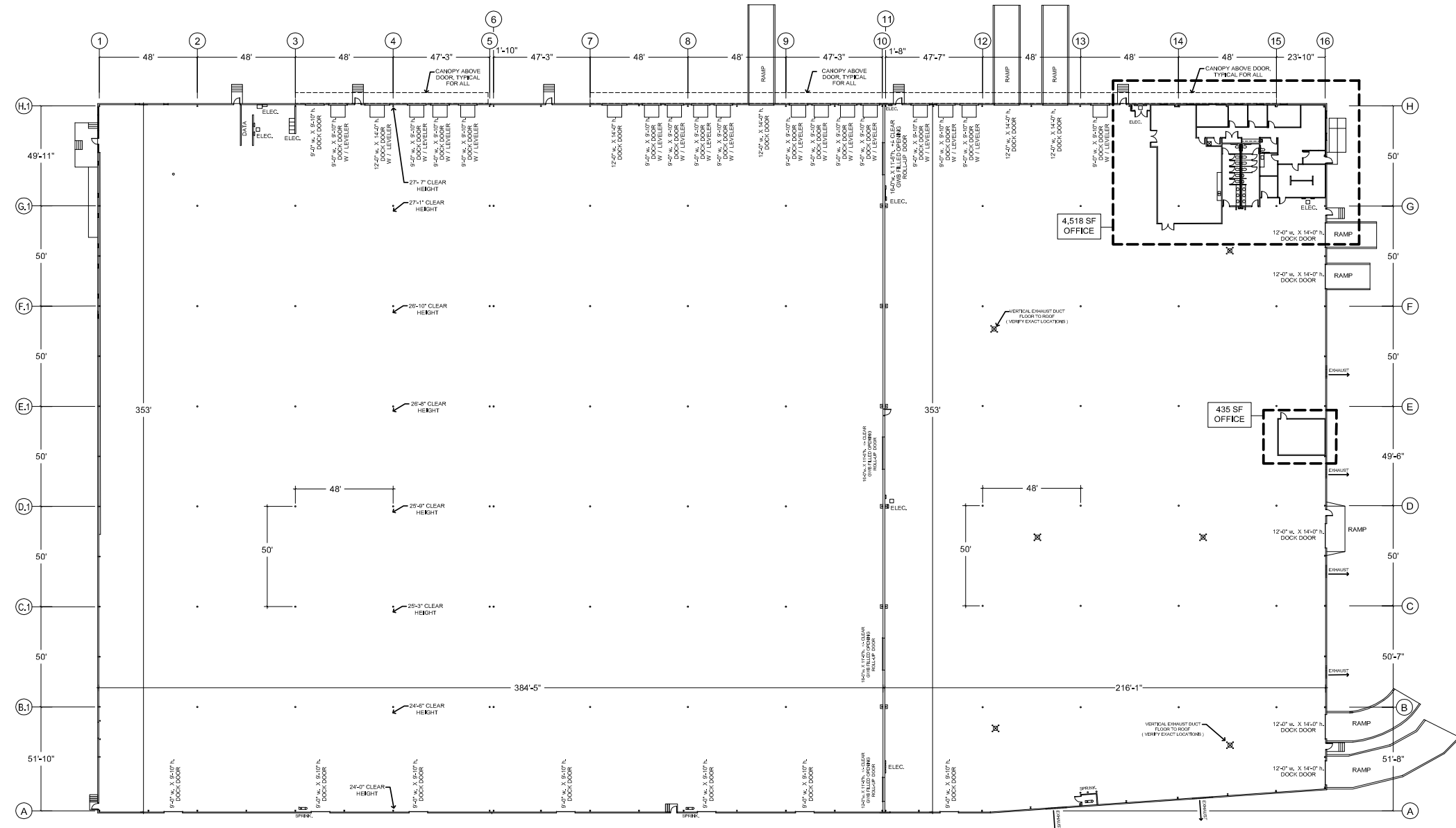
### SPECIFICATIONS

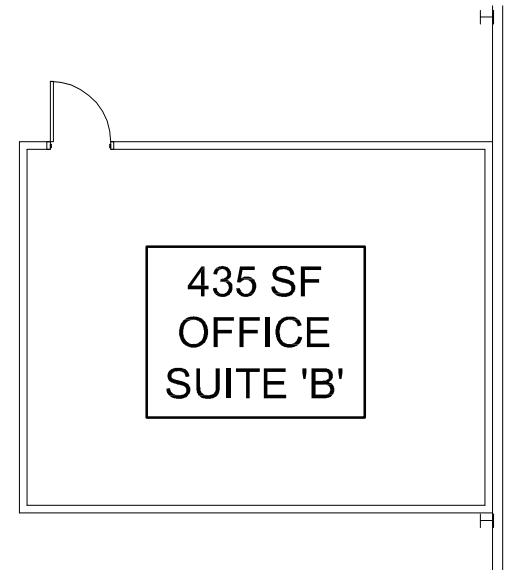
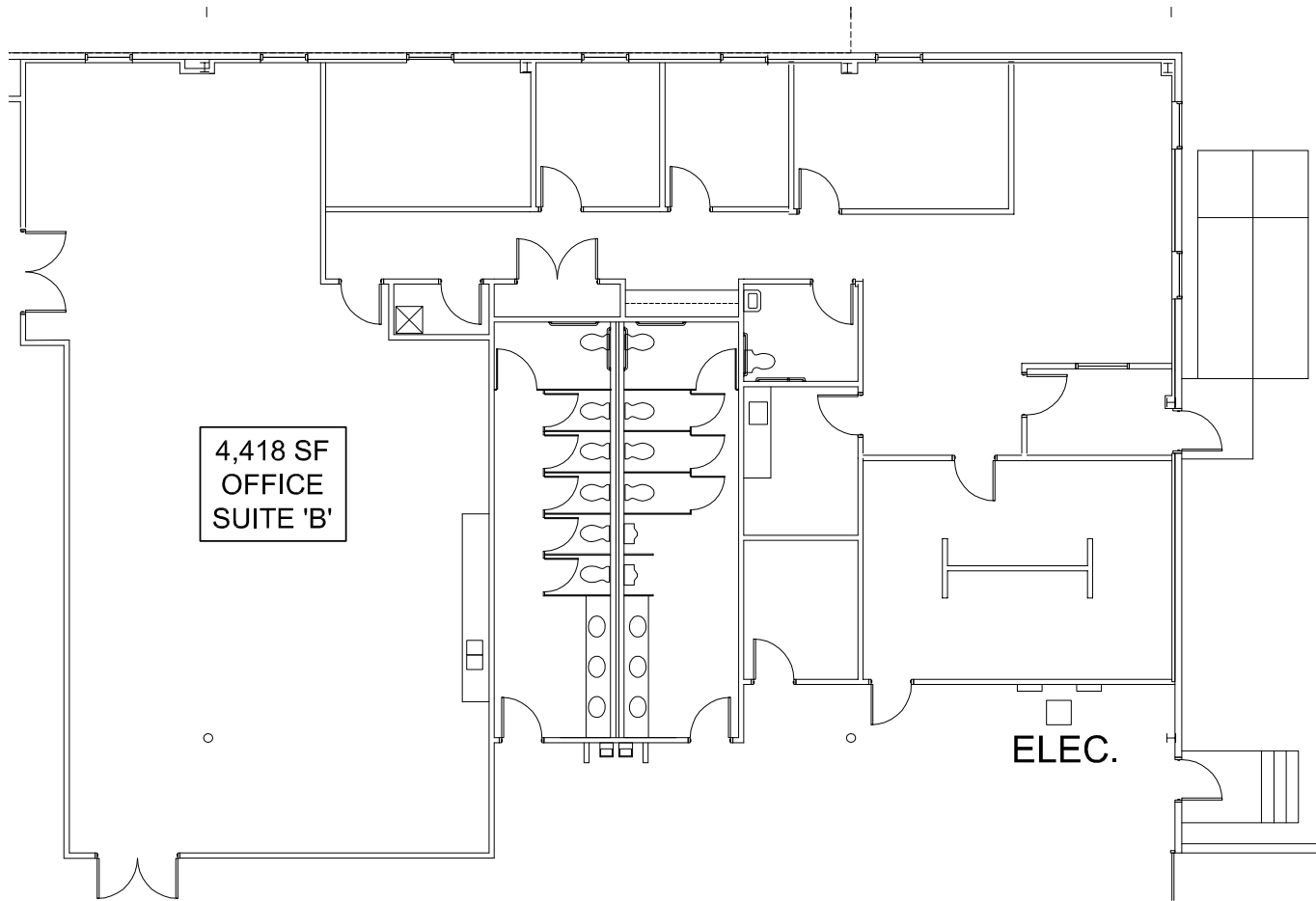
- ± 224,620 sf (subdividable)
- ± 4,518 sf of office space
- ESFR Sprinkler System
- Rail Potential via private Norfolk Southern Spur
- Former Amazon Facility with Drive-Thru Capability
- Nineteen (19) Dock Level Loading Doors (Expandable)
  - 18 with in-ground pit levelers
  - 1 with edge-of-dock leveler
- Eight (8) Grade Level Loading Doors
- Six (6) Rail Loading Doors
- Ceiling Height: ± 27"
- M-2 Zoning (Heavy Industrial)
- 3-Phase Electrical Power
- Column Spacing: Varies ± 48' x ± 50'
- Central Hampton Roads "Inside the Beltway" Location
- Amongst the lowest drayage rates in the region
- Immediate access to I-64, I-264, I-464, I-664, US-13, US-58, US-460
- Large shared paved trailer storage yard available
- Foreign Trade Zone and ICE Coffee Future eligibility
- Institutionally owned by Lovett Industrial

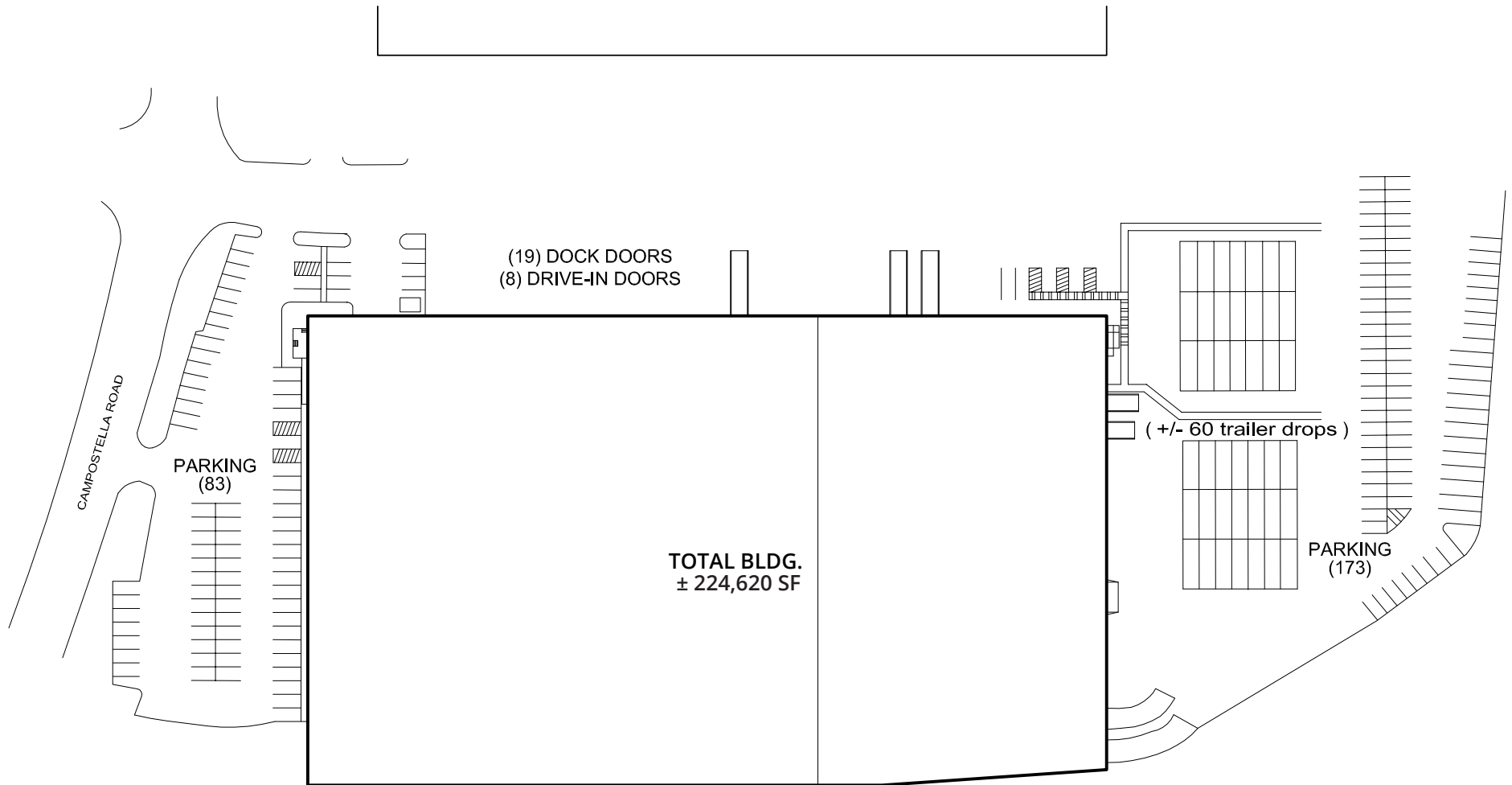


For more information:  
CHARLES L. DICKINSON, SIOR  
757.640.9468  
[CharlesDickinson@HarveyLindsay.com](mailto:CharlesDickinson@HarveyLindsay.com)

**HARVEY LINDSAY**  
COMMERCIAL REAL ESTATE





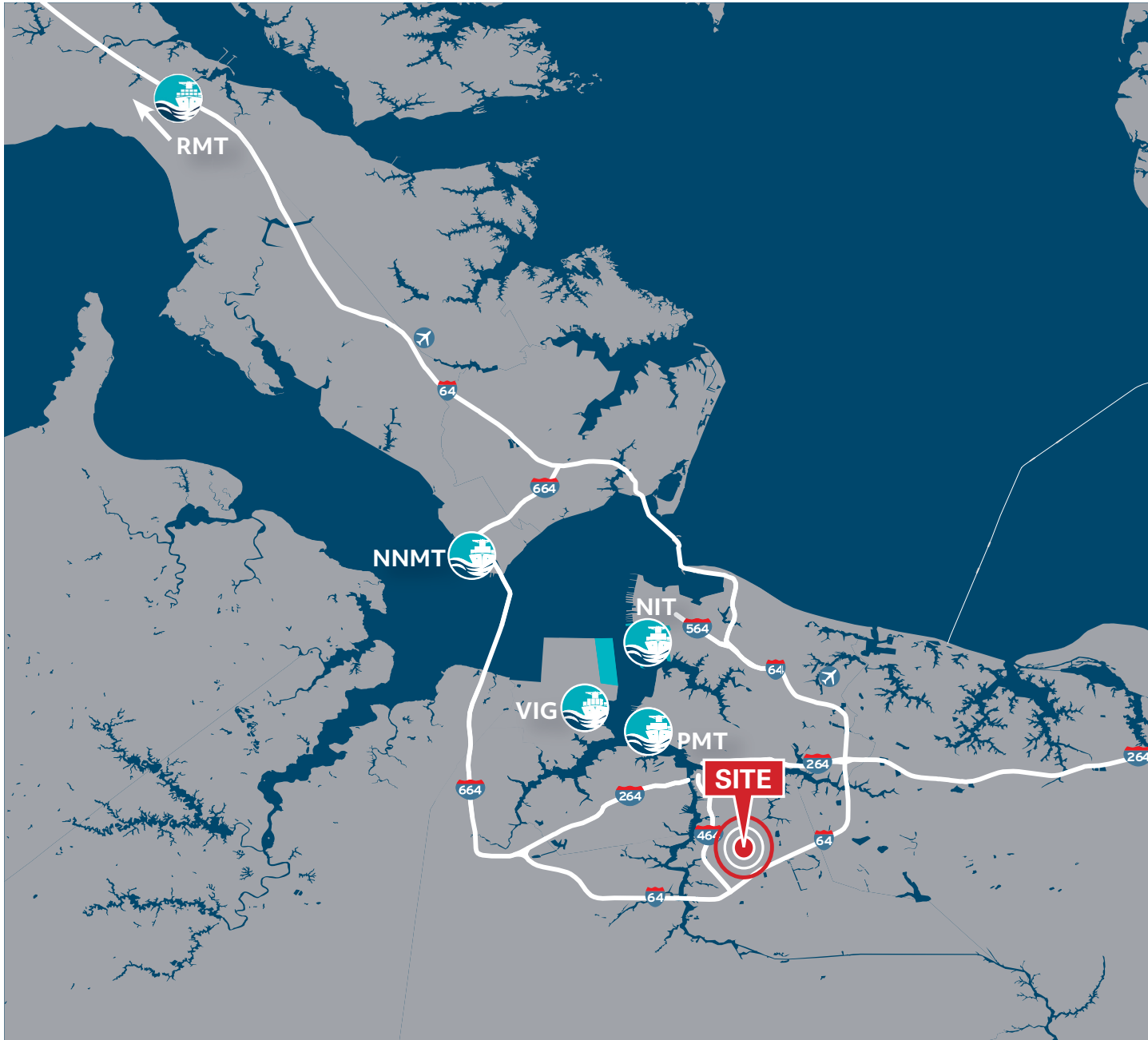


1920 CAMPOSTELLA ROAD  
SITE PLAN



# FOR LEASE - 1920 Campostella Road, Chesapeake, VA

## LOCATION MAP & DRIVING DISTANCES



### APPROXIMATE DISTANCES

Virginia International Gateway	± 11 Miles
Norfolk International Terminal	± 12 Miles
Portsmouth Marine Terminal	± 10 Miles
Craney Island (Future)	± 12 Miles
Newport News Marine Terminal	± 25 Miles
I-64	± 1.9 Miles
I-464	± 1.3 Miles
US-58 / I-664	± 11 Miles
US-13	± 1.0 Miles
I-95	± 79 Miles
Norfolk Naval Shipyard	± 6 Miles
Norfolk International Airport	± 14 Miles
Little Creek - Joint Exp. Base	± 15 Miles
Norfolk Naval Base	± 15 Miles
Oceana Naval Air Station	± 19 Miles
NN Shipbuilding	± 25 Miles

For more information:  
 CHARLES L. DICKINSON, SIOR  
 757.640.9468  
[CharlesDickinson@HarveyLindsay.com](mailto:CharlesDickinson@HarveyLindsay.com)

**HARVEY LINDSAY**  
 COMMERCIAL REAL ESTATE