

ENGINEERS CERTIFICATE

I, ROBERT E. RAUBERT, A REGISTERED PROFESSIONAL ENGINEER IN THE STATE OF KANSAS, AS A MEMBER OF THE BOARD OF CITY COMMISSIONERS OF THE CITY OF SHAWNEE, BEING SECTION 34, TOWNSHIP 35 SOUTH, RANGE 23 WEST, LINGUE COUNTY, KANSAS, HAVE BEEN DESIGNATED AS REGISTERED PROFESSIONAL ENGINEER IN CHARGE OF THE SURVEY AND PLANNING OF THE PROPOSED PLAT OF MID-AMERICA SECOND ADDITION, LIBERAL, KANSAS, WITH THE RECOMMENDATION THAT SUCH PLAT BE APPROVED AS PROPOSED.

APPROVED BY THE BOARD OF CITY COMMISSIONERS THIS 14th DAY OF JUNE, 1962.

APPROVED BY THE CITY ATTORNEY THIS 13th DAY OF JUNE, 1962.

APPROVED BY THE BOARD OF COUNTY COMMISSIONERS THIS 4th DAY OF JUNE, 1962.

APPROVED BY THE COUNTY CLERK THIS 4th DAY OF JUNE, 1962.

APPROVED BY THE REGISTER OF DEEDS THIS 11th DAY OF JUNE, 1962.



APPROVALS

THIS PLAT OF MID-AMERICA SECOND ADDITION, WAS BEEN SUBMITTED TO AND CONSIDERED BY THE BOARD OF CITY COMMISSIONERS AND IS HEREBY TRANSMITTED TO THE BOARD OF COUNTY COMMISSIONERS, LIBERAL, KANSAS, WITH THE RECOMMENDATION THAT SUCH PLAT BE APPROVED AS PROPOSED.

DATED THIS 22nd DAY OF APRIL, 1962.

BY: *[Signature]* PLANNING COMMISSION MAJOR

BY: *[Signature]* SECRETARY

APPROVED BY THE BOARD OF COUNTY COMMISSIONERS THIS 4th DAY OF JUNE, 1962.

APPROVED BY THE CITY ATTORNEY THIS 13th DAY OF JUNE, 1962.

APPROVED BY THE BOARD OF COUNTY COMMISSIONERS THIS 4th DAY OF JUNE, 1962.

APPROVED BY THE COUNTY CLERK THIS 4th DAY OF JUNE, 1962.

APPROVED BY THE REGISTER OF DEEDS THIS 11th DAY OF JUNE, 1962.

DEDICATION

KNOW ALL MEN BY THESE PRESENTS THAT MID-AMERICA DEVELOPMENT CORP., INC., A KANSAS CORPORATION, HAS HEREBY DEDICATED TO THE PUBLIC THE LANDS DESCRIBED IN THE PLAT OF MID-AMERICA SECOND ADDITION, LIBERAL, KANSAS, AND THE TRACED STREETS, ALLEYS AND EASEMENTS SHOWN THEREON AND HEREBY DEDICATED TO THE PUBLIC USE.

BY: *[Signature]* MID-AMERICA DEVELOPMENT CORP., INC. SECRETARY

BY: *[Signature]* JOAN THOMAS SECRETARY

BY: *[Signature]* GEORGE W. BREWER JR. SECRETARY

BY: *[Signature]* BARBARA S. BREWER SECRETARY

ACKNOWLEDGMENTS

STATE OF KANSAS, Liberal COUNTY, SS.

BE IT REMEMBERED, THAT ON THIS 12th DAY OF MAY, A.D. 1962, BEFORE ME, THE UNDERSIGNED, A NOTARY PUBLIC IN AND FOR THE COUNTY AND STATE AFORESAID, CAME George W. Brewer, Jr. PRESIDENT OF MID-AMERICA DEVELOPMENT CORP., INC., A CORPORATION INCORPORATED AND EXISTING UNDER AND BY VIRTUE OF THE LAWS OF KANSAS AND WHOSE OFFICE IS AT 1000 North 10th Street, Liberal, Kansas, AND WHOSE BUSINESS AND CONNECTION, WHO ARE PERSONALLY KNOWN TO ME TO BE SUCH OFFICERS, AND WHOSE SIGNATURES AND CONNECTION, WHO ARE PERSONALLY KNOWN TO ME TO BE SUCH OFFICERS, THE WITHIN INSTRUMENT OF WRITING ON BEHALF OF SAID CORPORATION, AND SUCH PERSONS DULY ACKNOWLEDGED THE EXECUTION OF THE SAME TO BE THE ACT AND DEED OF SAID CORPORATION.

IN TESTIMONY WHEREOF, I HAVE HERETO SET MY HAND AND AFFIXED MY NOTARIAL SEAL ON THE DAY AND YEAR LAST ABOVE MENTIONED.

TERM EXPIRES 12th DAY OF May, 1962.

[Signature] NOTARY PUBLIC

STATE OF KANSAS, Liberal COUNTY, SS.

BE IT REMEMBERED, THAT ON THIS 12th DAY OF MAY, A.D. 1962, BEFORE ME, THE UNDERSIGNED, A NOTARY PUBLIC IN AND FOR THE COUNTY AND STATE AFORESAID, CAME George W. Brewer, Jr. PRESIDENT OF MID-AMERICA DEVELOPMENT CORP., INC., A CORPORATION INCORPORATED AND EXISTING UNDER AND BY VIRTUE OF THE LAWS OF KANSAS AND WHOSE OFFICE IS AT 1000 North 10th Street, Liberal, Kansas, AND WHOSE BUSINESS AND CONNECTION, WHO ARE PERSONALLY KNOWN TO ME TO BE SUCH OFFICERS, AND WHOSE SIGNATURES AND CONNECTION, WHO ARE PERSONALLY KNOWN TO ME TO BE SUCH OFFICERS, THE WITHIN INSTRUMENT OF WRITING ON BEHALF OF SAID CORPORATION, AND SUCH PERSONS DULY ACKNOWLEDGED THE EXECUTION OF THE SAME TO BE THE ACT AND DEED OF SAID CORPORATION.

IN TESTIMONY WHEREOF, I HAVE HERETO SET MY HAND AND AFFIXED MY NOTARIAL SEAL ON THE DAY AND YEAR LAST ABOVE MENTIONED.

TERM EXPIRES 12th DAY OF May, 1962.

[Signature] NOTARY PUBLIC

STATE OF KANSAS, Liberal COUNTY, SS.

BE IT REMEMBERED, THAT ON THIS 12th DAY OF MAY, A.D. 1962, BEFORE ME, THE UNDERSIGNED, A NOTARY PUBLIC IN AND FOR THE COUNTY AND STATE AFORESAID, CAME George W. Brewer, Jr. PRESIDENT OF MID-AMERICA DEVELOPMENT CORP., INC., A CORPORATION INCORPORATED AND EXISTING UNDER AND BY VIRTUE OF THE LAWS OF KANSAS AND WHOSE OFFICE IS AT 1000 North 10th Street, Liberal, Kansas, AND WHOSE BUSINESS AND CONNECTION, WHO ARE PERSONALLY KNOWN TO ME TO BE SUCH OFFICERS, AND WHOSE SIGNATURES AND CONNECTION, WHO ARE PERSONALLY KNOWN TO ME TO BE SUCH OFFICERS, THE WITHIN INSTRUMENT OF WRITING ON BEHALF OF SAID CORPORATION, AND SUCH PERSONS DULY ACKNOWLEDGED THE EXECUTION OF THE SAME TO BE THE ACT AND DEED OF SAID CORPORATION.

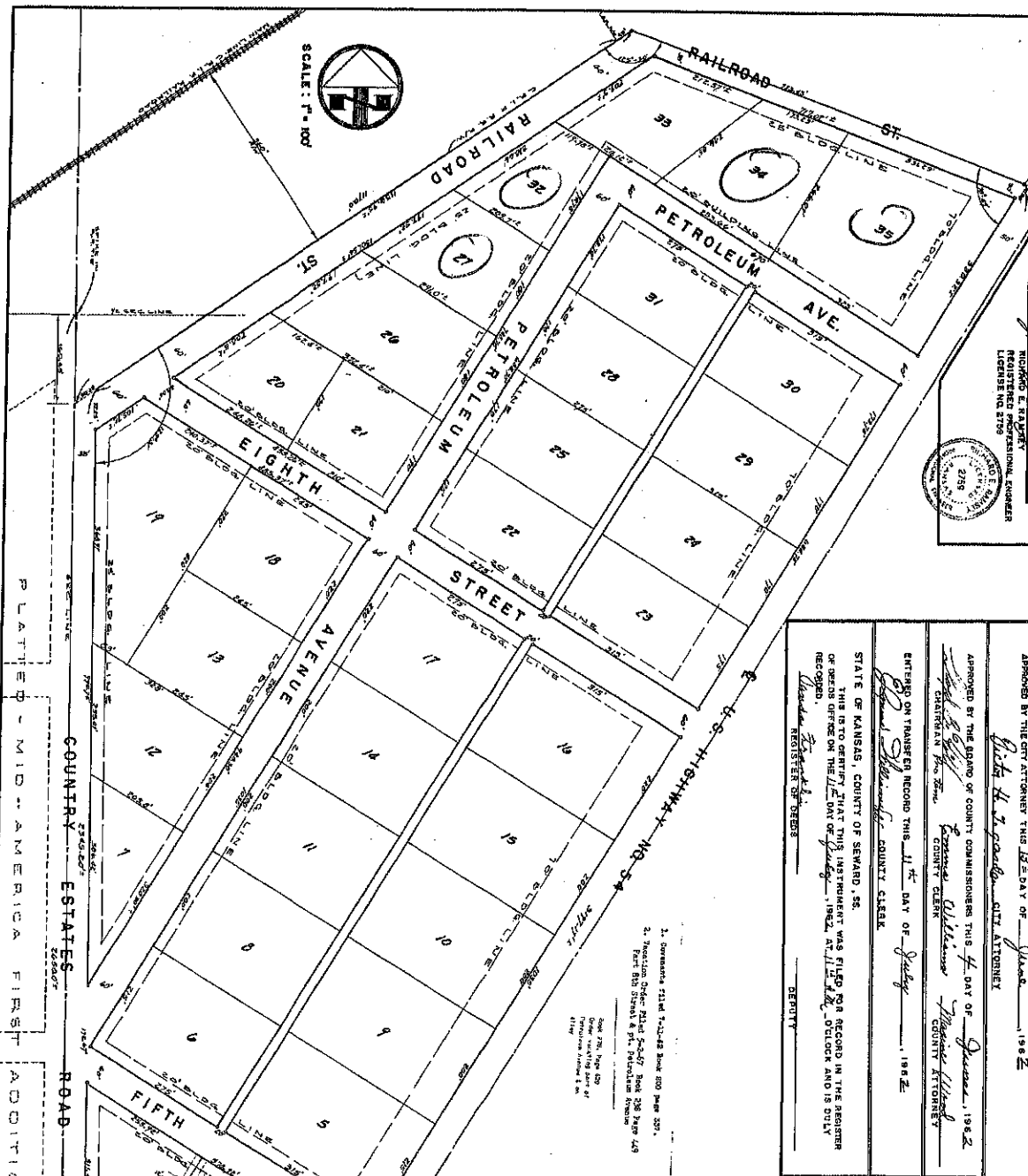
IN TESTIMONY WHEREOF, I HAVE HERETO SET MY HAND AND AFFIXED MY NOTARIAL SEAL ON THE DAY AND YEAR LAST ABOVE MENTIONED.

TERM EXPIRES 12th DAY OF May, 1962.

[Signature] NOTARY PUBLIC

PLAT
MID-AMERICA SECOND ADD.
LIBERAL, KANSAS

PREPARED BY: *[Signature]* D. L. UNIVERSITY
REGISTERED PROFESSIONAL ENGINEER
DATE: 5/11/62



PLAT OF MID-AMERICA SECOND ADDITION, LIBERAL, KANSAS, WITH THE RECOMMENDATION THAT SUCH PLAT BE APPROVED AS PROPOSED.



FARMLAND NATIONAL BEEF PACKING COMPANY, LP
1483400000003000

18TH ST

SOUTH MAIN

LIBERAL REDI-MIX LLC
1483400000009010

476.27'

527.43'

RED BARN TRUCK WASH & SERVICE LLC
1483400000009000

BROWN, ALAN D
1483400000010000

565.38'

RAILROAD ST

189.21'

DOONAN TRUCK & EQUIP INC
1483400000011010

DOONAN TRUCK & EQUIP INC
1483400000011020

TIM LANDAIR LLC
1483400000011000

LIBERAL DEVELOPMENT LLC
1483403004001000

SPRINGWOOD

RWC LLC
1483403001001000

RWC LLC
1483403001001020

BROWN, ALAN DALE & JOLENE
1483402002001000

SEWARD COUNTY, KS

1 in = 200 feet

SEWARD COUNTY KANSAS GIS DATA DISCLAIMER:
While Seward County makes every effort to maintain and distribute accurate information, no warranties or representation of any kind are made regarding information, data or services provided. In no event, shall Seward County, Kansas, be liable in any way to the users of this data. Users of this data shall hold Seward County, Kansas, harmless in all matters and accounts arising from the use and/or accuracy of this data. Use of this data indicates acceptance of this disclaimer and conditions, if you do not agree do not use the data. Parcel ownership lines are for taxing purposes only. Lines are not intended for conveyance nor are they survey quality. Seward County continually updates the GIS database, therefore, maps created after this date may contain updated information. 2021 Imagery. Map Compiled by GIS Department 2024.

Seward County 515 North Washington, Liberal, KS 67901
GIS DEPARTMENT