



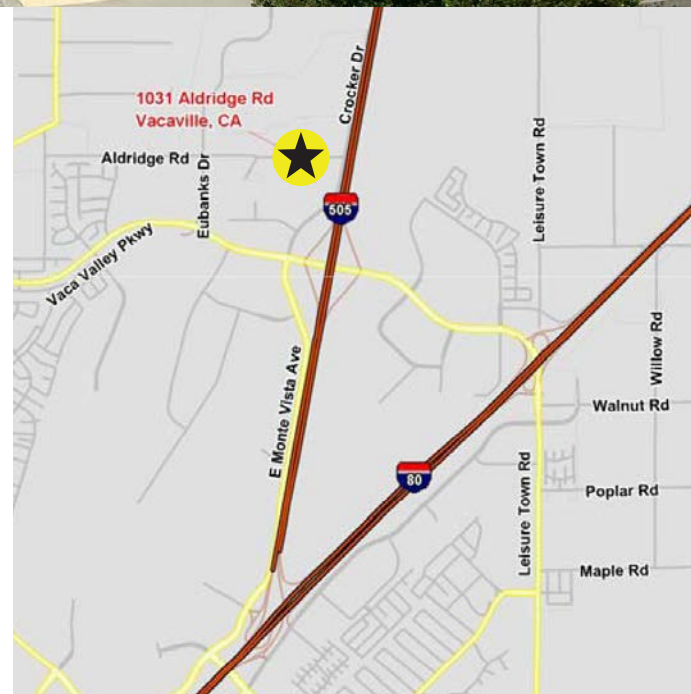
FOR LEASE
SUITE I: ±2,240

1031 Aldridge Road, Vacaville, CA



Property Overview

- ▶ Excellent Manufacturing and Service Commercial Building
- ▶ Clear Height: 16' – 17'
- ▶ Parking Ratio: 2.5/1,000
- ▶ Sprinklered (.33/3,000 SF)
- ▶ Insulated Roof and Interior Walls
- ▶ Skylights
- ▶ Immediate Access to I-80 & I-505
- ▶ Industrial Zoning
- ▶ Roll Up Door 12' x 14'
- ▶ Available immediately



CHRIS PETRINI

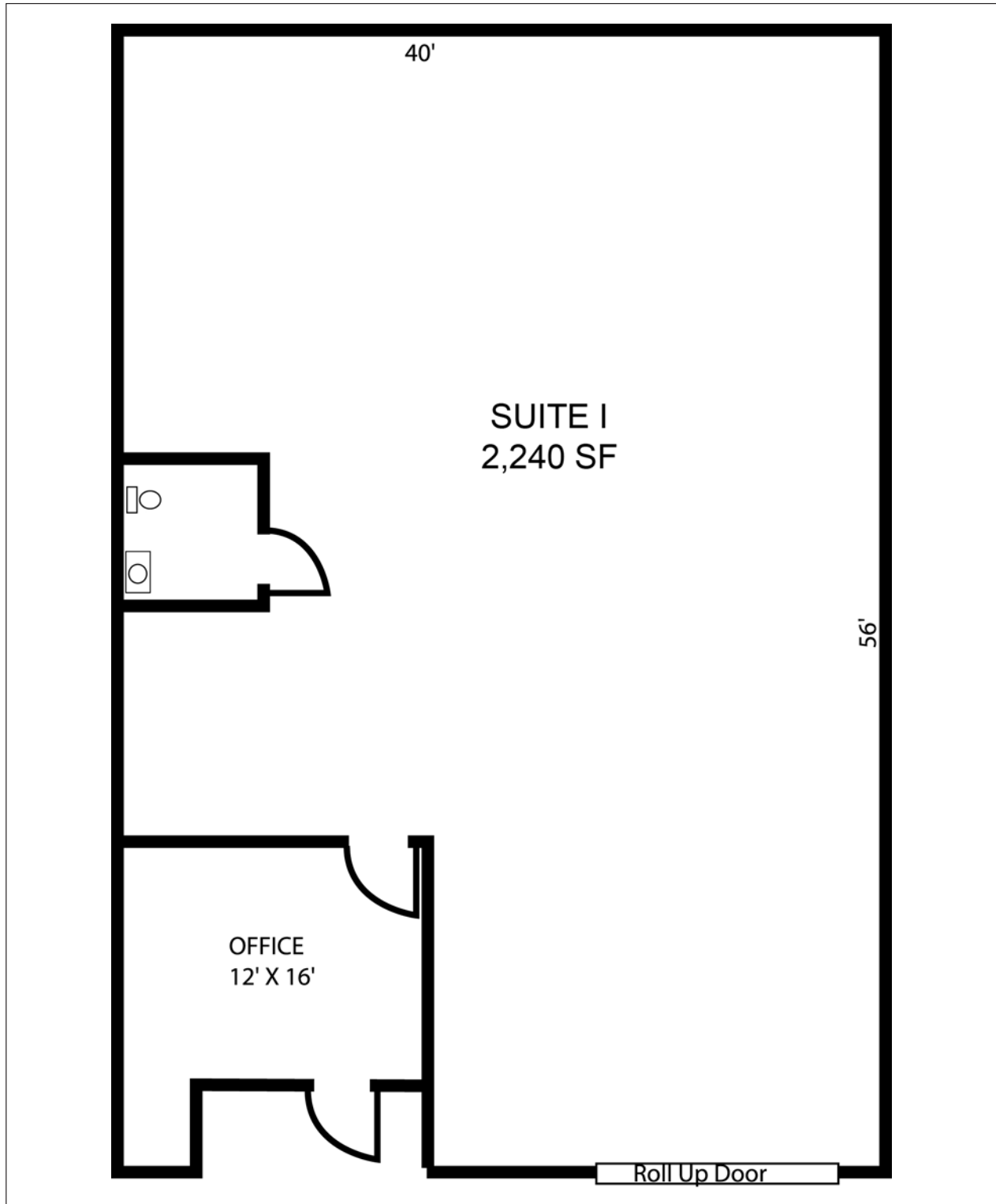
CA License No. 01020505
chris@petrinicommercial.com
Cell +1 510.507.8665

PETRINI COMMERCIAL

2333 Courage Drive, Suite H
Fairfield, CA 94534
www.petrinicommercial.com

FOR LEASE
SUITE I: ±2,240 SF

1031 Aldridge Road, Vacaville, CA

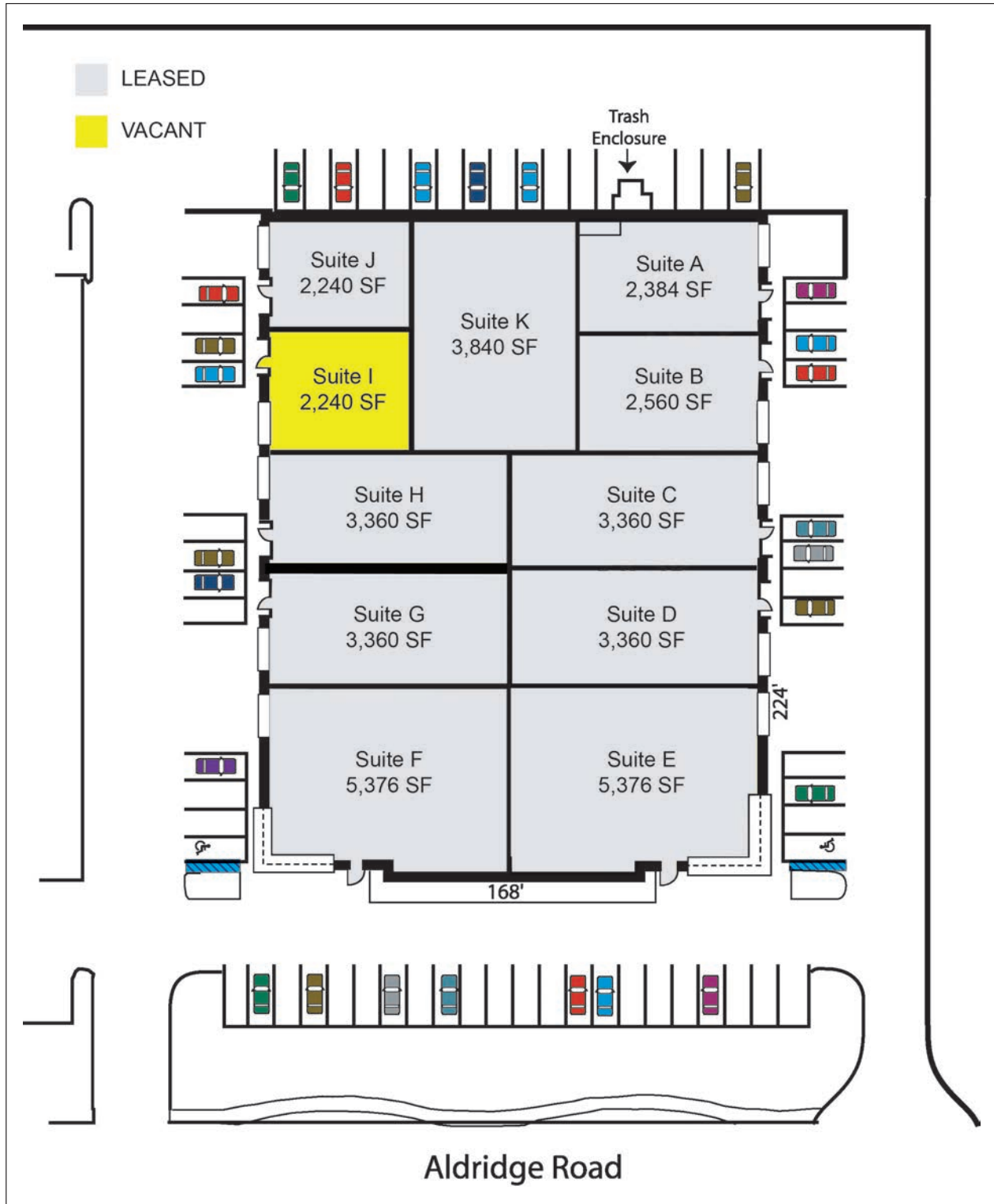


CHRIS PETRINI
CA License No. 01020505
chris@petrinicommercial.com
Cell +1 510.507.8665

PETRINI COMMERCIAL
2333 Courage Drive, Suite H
Fairfield, CA 94534
www.petrinicommercial.com

FOR LEASE
SUITE I: ±2,240 SF

1031 Aldridge Road, Vacaville, CA



CHRIS PETRINI
CA License No. 01020505
chris@petrinicommercial.com
Cell +1 510.507.8665

PETRINI COMMERCIAL
2333 Courage Drive, Suite H
Fairfield, CA 94534
www.petrinicommercial.com