

FLEX SPACE FOR LEASE

5773 & 5776 ARROWHEAD DRIVE

Virginia Beach, VA 23462



S.L. NUSBAUM
REALTY CO.



MICHAEL GOOD

Senior Associate

O. 757.640.2217

C. 757.646.0525

mgood@slnusbaum.com

EXECUTIVE SUMMARY

5773 & 5776 ARROWHEAD DRIVE
Virginia Beach, VA 23462



S.L. NUSBAUM
REALTY CO.



OFFERING SUMMARY

Lease Rate:	\$15.00 SF/yr (Net of Electric & Janitorial)
Building Size:	49,272 SF Total
Lot Size:	2.8 Acres Total
Year Built:	1979
Zoning:	II (Light Industrial)

PROPERTY HIGHLIGHTS

- Professionally managed by S.L. Nusbaum Realty Co.
- Under new ownership
- Building and common area improvements planned for Q2, 2025
- Flex units available around $\pm 1,300$ SF - Units contain a mix of office and warehouse space
- Each suite features a 10'x10' roll-up door to allow drive-in capability
- Centrally located in South Hampton Roads with convenient access to I-264 and I-64

SITE PLAN

5773 & 5776 ARROWHEAD DRIVE
Virginia Beach, VA 23462



S.L. NUSBAUM
REALTY CO.



AVAILABLE SPACES

5773, Suite 103

SPACE SIZE

1,260 SF

LEASE RATE

\$15.00 SF/yr.

LEASE TYPE

Net of Electric & Janitorial

SITE PLAN

5773 & 5776 ARROWHEAD DRIVE

Virginia Beach, VA 23462



S.L. NUSBAUM
REALTY CO.



AVAILABLE SPACES

5776, Suite 110

SPACE SIZE

3,348 SF

LEASE RATE

\$15.00 SF/yr.

LEASE TYPE

Net of Electric & Janitorial

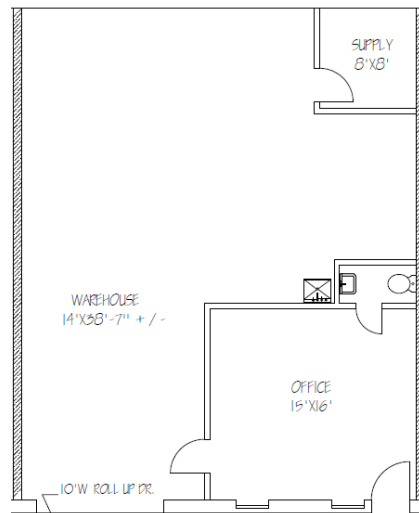
AVAILABLE FLOOR PLANS

5773 & 5776 ARROWHEAD DRIVE

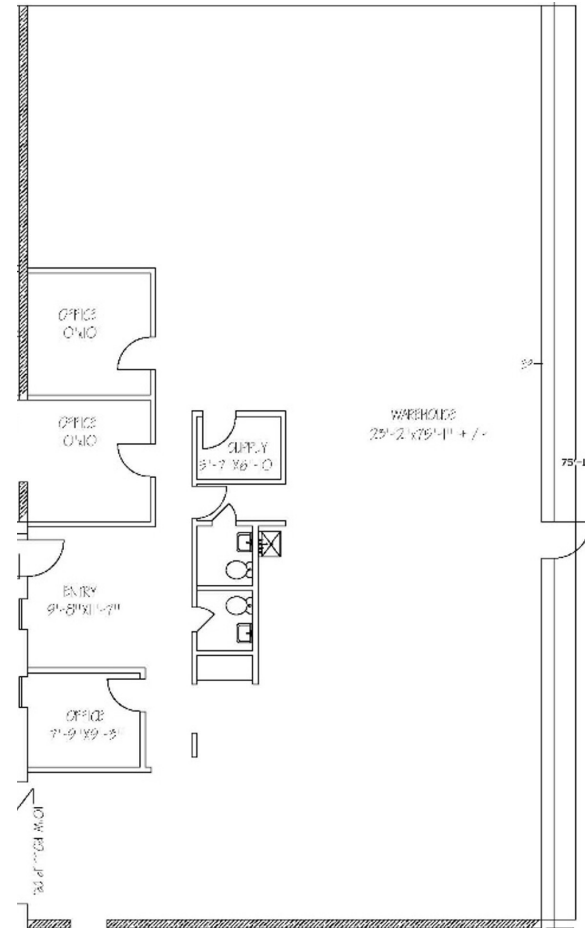
Virginia Beach, VA 23462



S.L. NUSBAUM
REALTY CO.



Suite 103
1,260 SF



Suite 110
3,348 SF

Virginia Beach, VA 23462



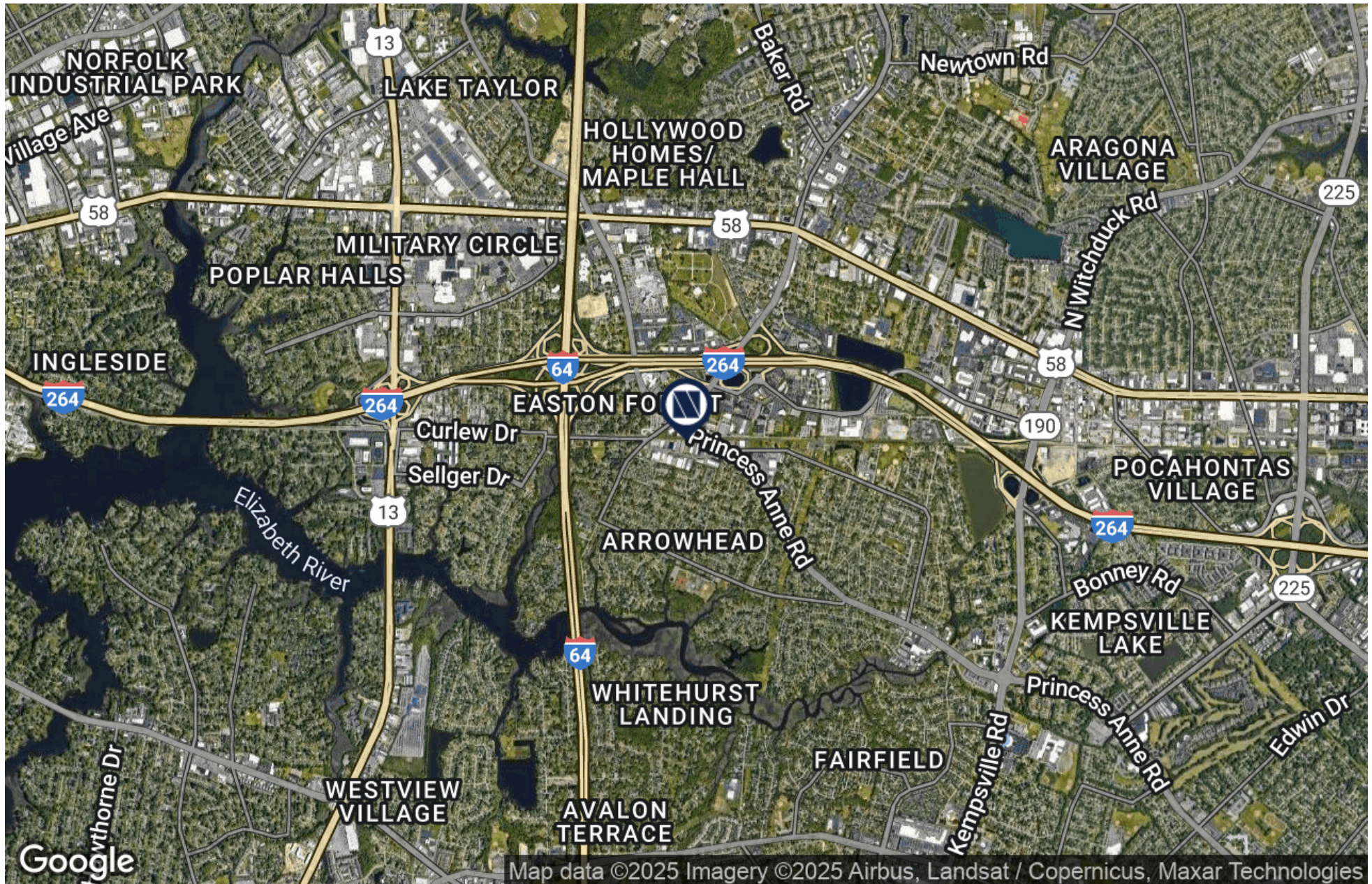
LOCATION MAP

5773 & 5776 ARROWHEAD DRIVE

Virginia Beach, VA 23462



S.L. NUSBAUM
REALTY CO.



CONTACT INFORMATION

5773 & 5776 ARROWHEAD DRIVE
Virginia Beach, VA 23462



S.L. NUSBAUM
REALTY CO.

MICHAEL GOOD

Senior Associate

C. 757.646.0525

O. 757.640.2217

mgood@slnusbaum.com

COMMITMENT. INTEGRITY. EXCELLENCE. SINCE 1906.

Serving the Southeast and Mid-Atlantic region for well over a century, S.L. Nusbaum Realty Co. continues to provide a comprehensive experience for our clients and customers in all aspects of the multifamily and commercial real estate industry.

[CLICK HERE TO LEARN MORE](#)



DISCLAIMER:

No warranty or representation, expressed or implied, is made to the accuracy or completeness of the information contained herein, and same is submitted subject to errors, omissions, change of price, rental or other conditions, withdrawal without notice, and to any special listing conditions imposed by the property owner(s). As applicable, we make no representation as to the condition of the property (or properties) in question or the property's (or properties') compliance with applicable laws, regulations, and codes.