

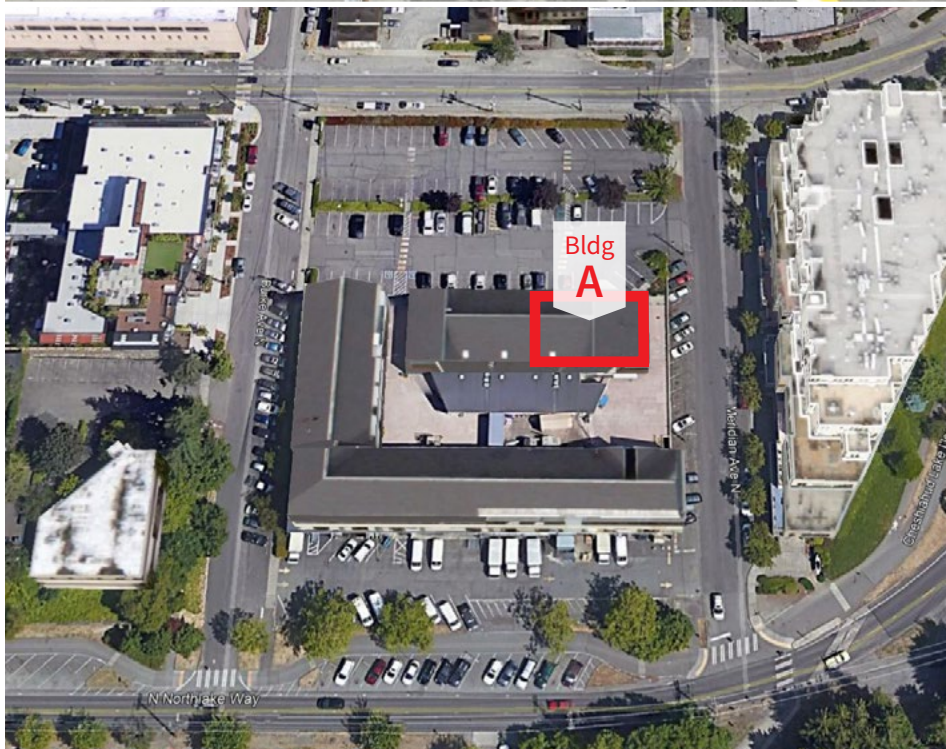
# Mariners Square

Suite 249 | 1900 North Northlake Way | Seattle, WA 98103



## Building snapshot

- + 3 buildings on campus
- + Abundant natural light
- + On-site parking available
- + One (1) free parking stall and one (1) stall at \$175/month (unreserved)
- + Free visitor and street parking



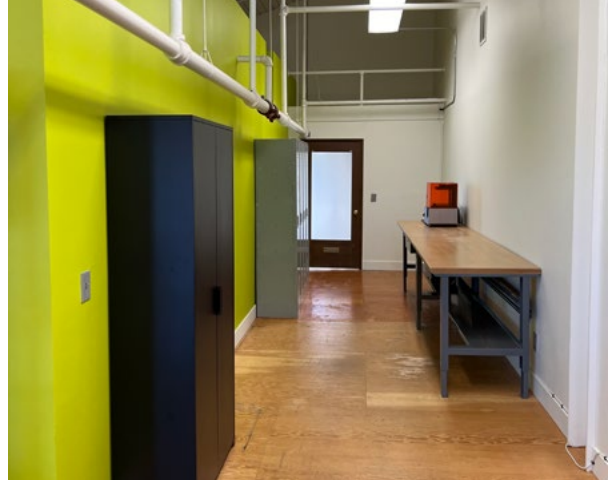
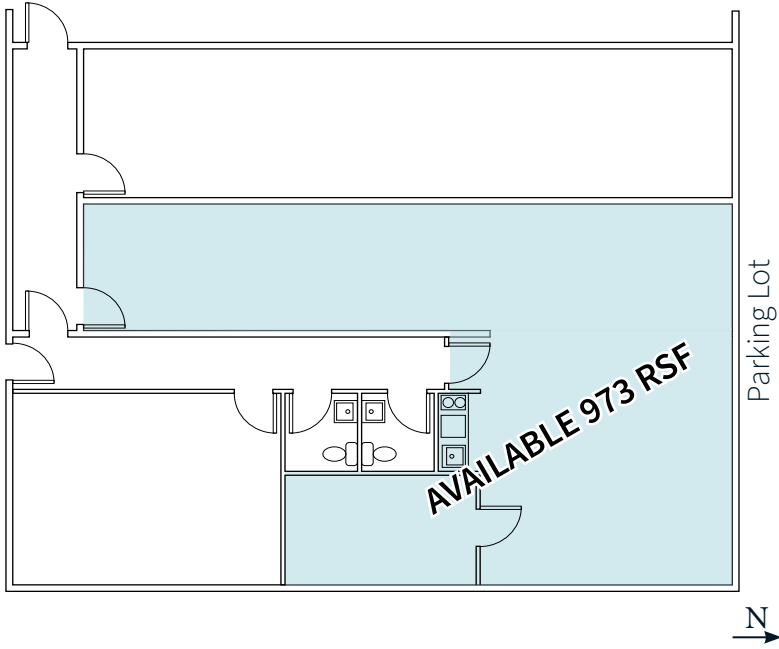
## Space highlights

- + Available: Now
- + Year 1: \$19/rsf Full Service
- + Year 2: \$20/rsf Full Service
- + The lease expires 11/30/2025; however, Landlord is willing to offer additional lease term, starting in Year 3 at \$35/rsf Full Service.
- + Fully furnished, move-in ready, “warm feeling” space with high ceilings, and lots of natural light
- + Please send all inquiries to Landlord’s broker: Tim Jones (JLL)



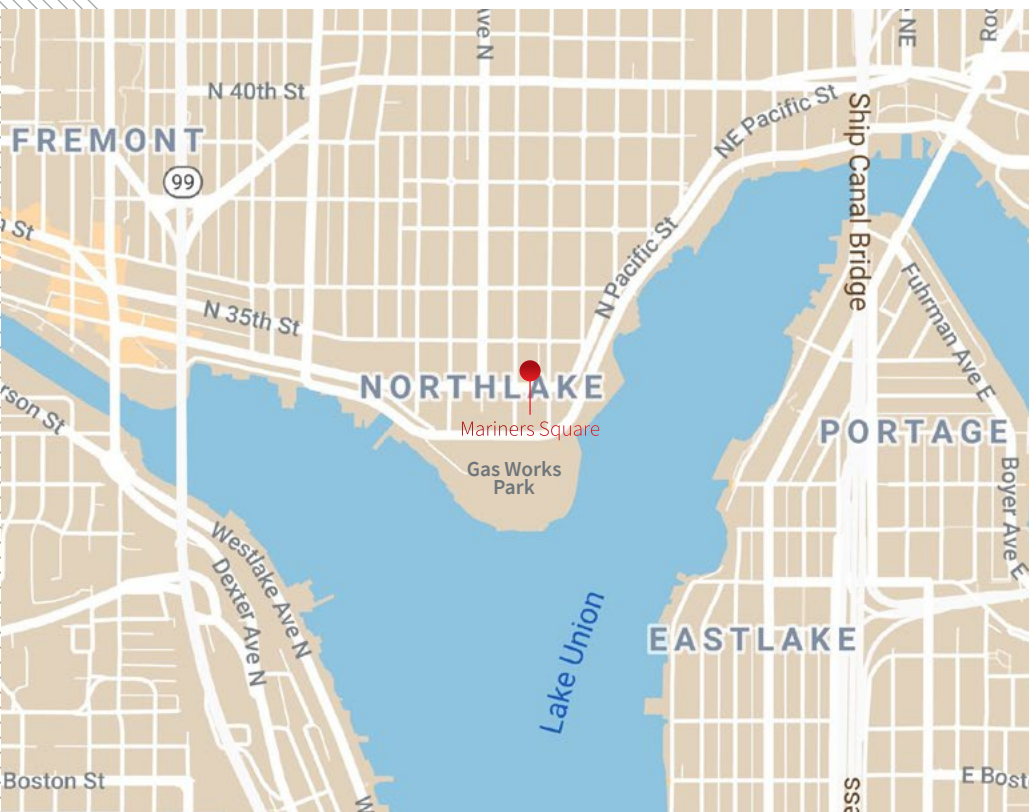
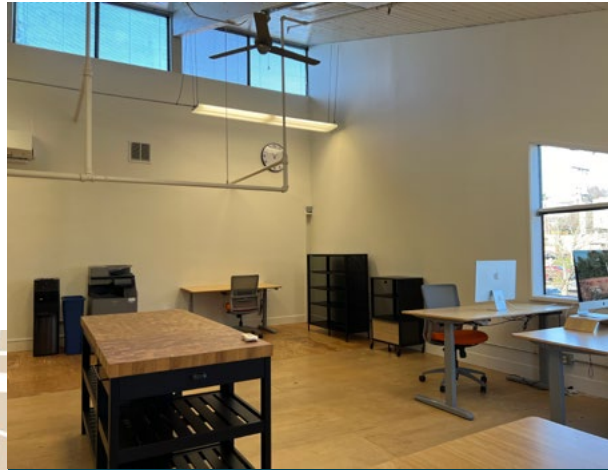
## Floor plan

Suite 249 973 SF



## Building location

- + Multiple food and retail options nearby
- + Mas Cafe and other notable restaurants within walking distance
- + Gas Works Park across the street
- + Easy access to I-5, SR-99, Downtown Seattle, and the University of Washington



### CONTACT:

**Tim Jones**

+1 206 971 7011

[tim.jones@jll.com](mailto:tim.jones@jll.com)

© 2024 Jones Lang LaSalle IP, Inc. All rights reserved. All information contained herein is from sources deemed reliable; however, no representation or warranty is made to the accuracy thereof. Jones Lang LaSalle Brokerage, Inc.