



1531 W 18th St

1531 W 18th St, Chicago, IL 60608

Paul Murphy

Murmak Group

1531 W 18th St, Chicago, IL 60608

1531w18thstreet@gmail.com

(708) 831-2206



1531 W 18th St

\$30.00 /SF/YR

Prime Commercial Space for Rent – 1750 Sq. Ft.
Additional 1700 sq. ft. basement for additional storage available

Location: High-traffic corner of Ashland Ave. & 18th St.
6 car garage with alley access

Looking for the perfect spot for your business? This versatile 1750 sq. ft. commercial space offers excellent street-level visibility and easy front access, making it ideal for a variety of uses, including:

- Office space
- Bakery or café
- Boutique retail
- ...

- High foot and vehicle traffic location
- Large front windows for natural light and display opportunities
- 6 Car Garage on site in the back of the commercial space
- Flexible layout to suit your business needs
- Surrounded by vibrant local businesses



Rental Rate:	\$30.00 /SF/YR
Property Type:	Multifamily
Property Subtype:	Apartment
Apartment Style:	Low Rise
Year Built:	1881
Walk Score ®:	96 (Walker's Paradise)
Transit Score ®:	65 (Good Transit)
Rental Rate Mo:	\$2.50 /SF/MO

1st Floor

Space Available	1,750 SF
Rental Rate	\$30.00 /SF/YR
Date Available	Now
Service Type	Triple Net (NNN)
Space Type	Relet
Space Use	Retail
Lease Term	1 - 5 Years

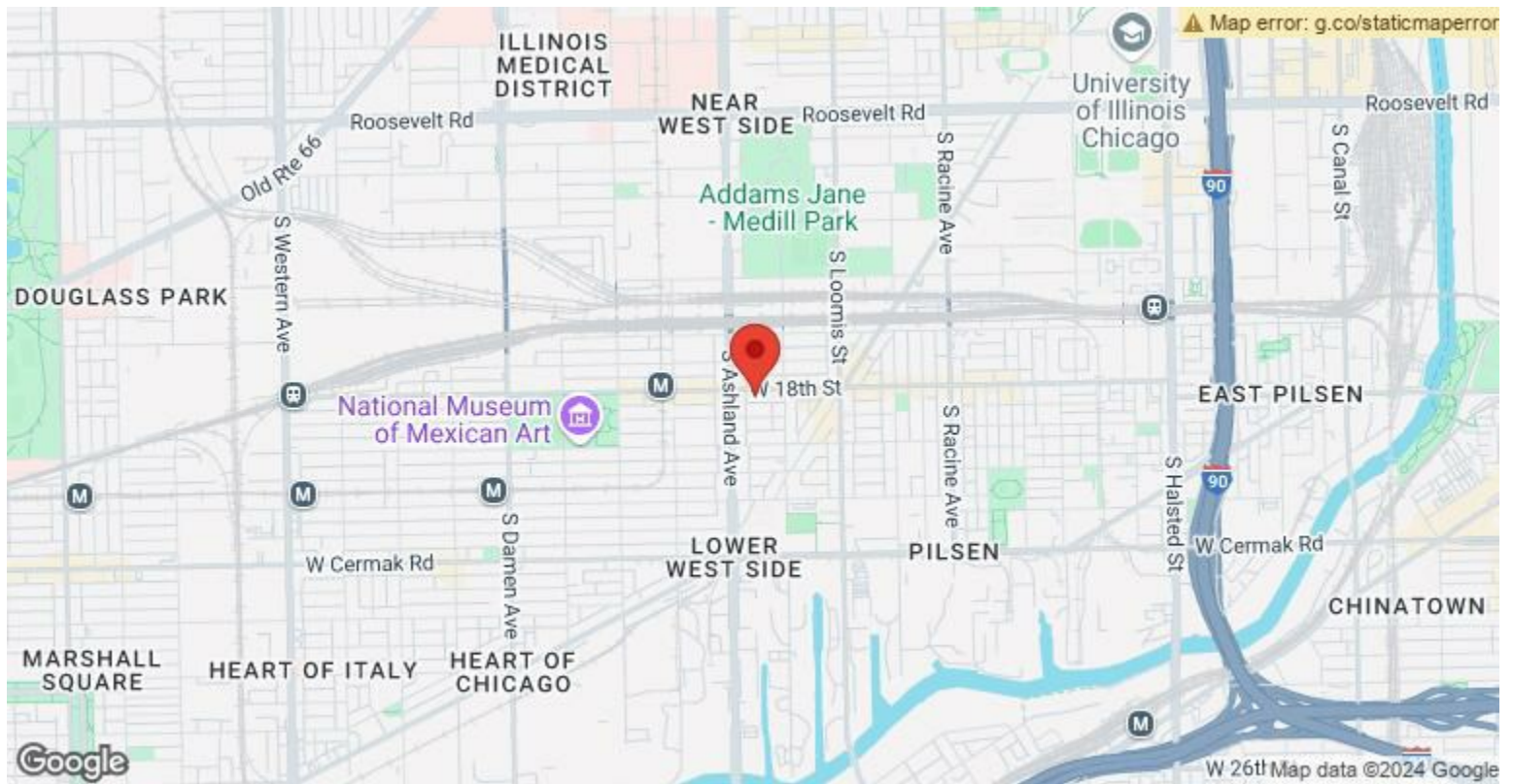
Prime Commercial Space for Rent – 1750 Sq. Ft. full basement available also for additional storage 1750 Sq Ft Rear Garage 800 Sq. Ft. Location: High-traffic corner of Ashland Ave. & 18th St. Looking for the perfect spot for your business? This versatile 1750 sq. ft. commercial space offers excellent street-level visibility and easy front access, making it ideal for a variety of uses, including:

- Office space
- Bakery or café
- Boutique retail
- Creative studio

Key Features:

- High foot and vehicle traffic location
- Large front windows for natural light and display opportunities
- Flexible layout to suit your business needs
- Convenient parking options nearby
- Surrounded by vibrant local businesses

Take advantage of this prime location in a bustling area with endless potential to grow your business. Rent: Competitive rates available upon inquiry. Don't miss out on this opportunity to secure a prime spot for your business!



1531 W 18th St, Chicago, IL 60608

Prime Commercial Space for Rent – 1750 Sq. Ft.
Additional 1700 sq. ft. basement for additional storage available
Location: High-traffic corner of Ashland Ave. & 18th St.
6 car garage with alley access

Looking for the perfect spot for your business? This versatile 1750 sq. ft. commercial space offers excellent street-level visibility and easy front access, making it ideal for a variety of uses, including:

- Office space
- Bakery or café
- Boutique retail
- Creative studio

Take advantage of this prime location in a bustling area with endless potential to grow your business.

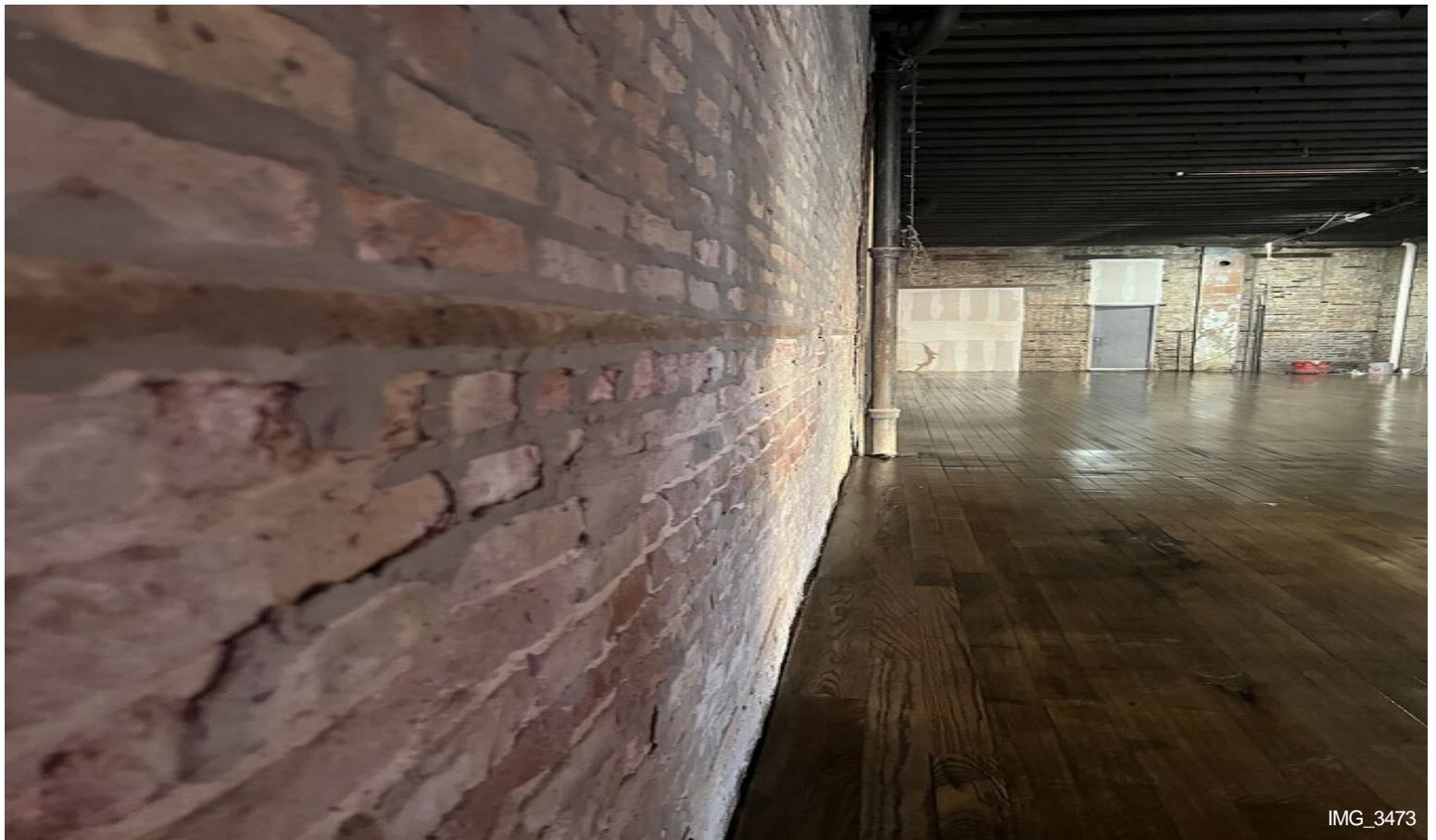
Rent: Competitive rates available upon inquiry.

Don't miss out on this opportunity to secure a prime spot for your business!

Property Photos

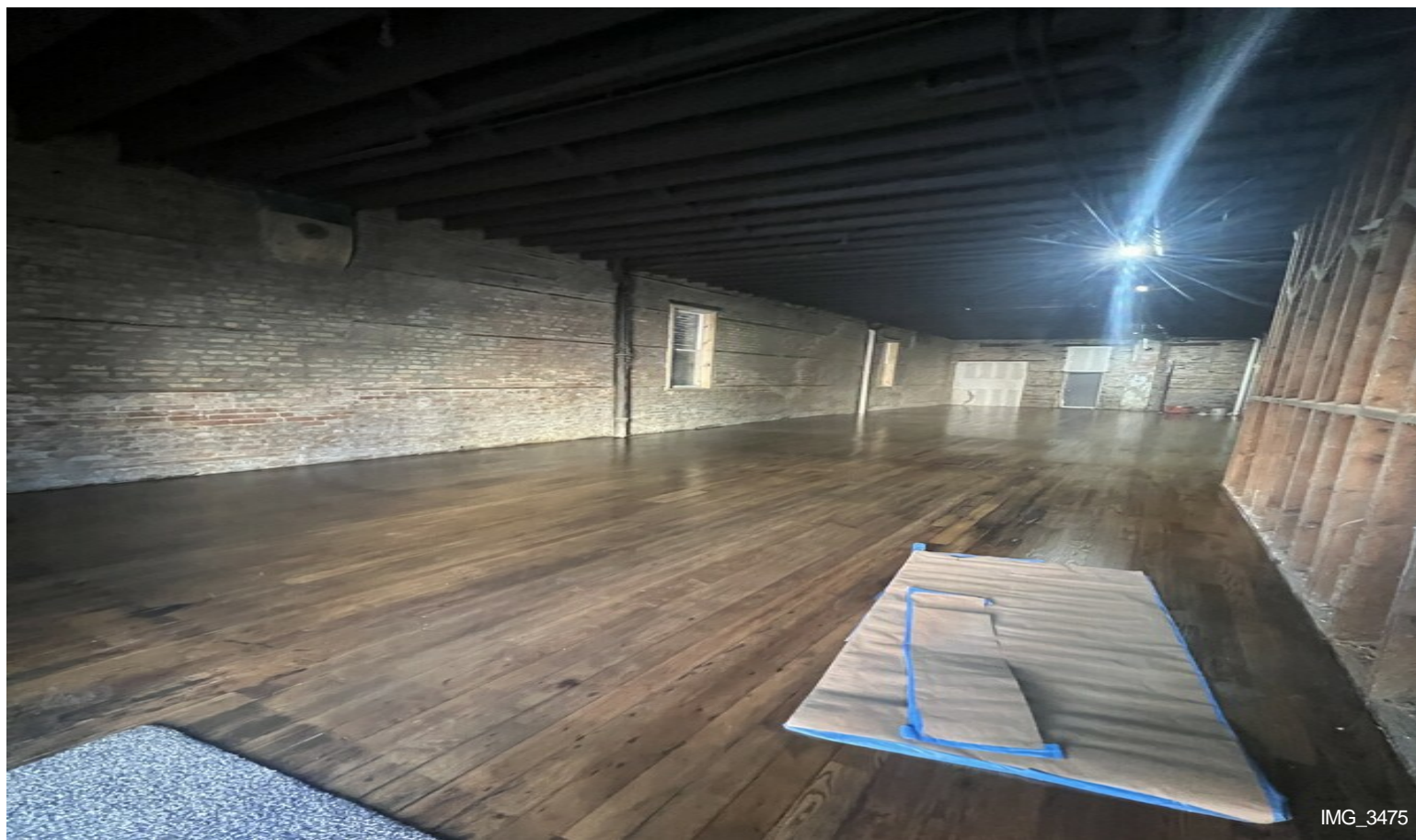


IMG_3472



IMG_3473

Property Photos



IMG_3475

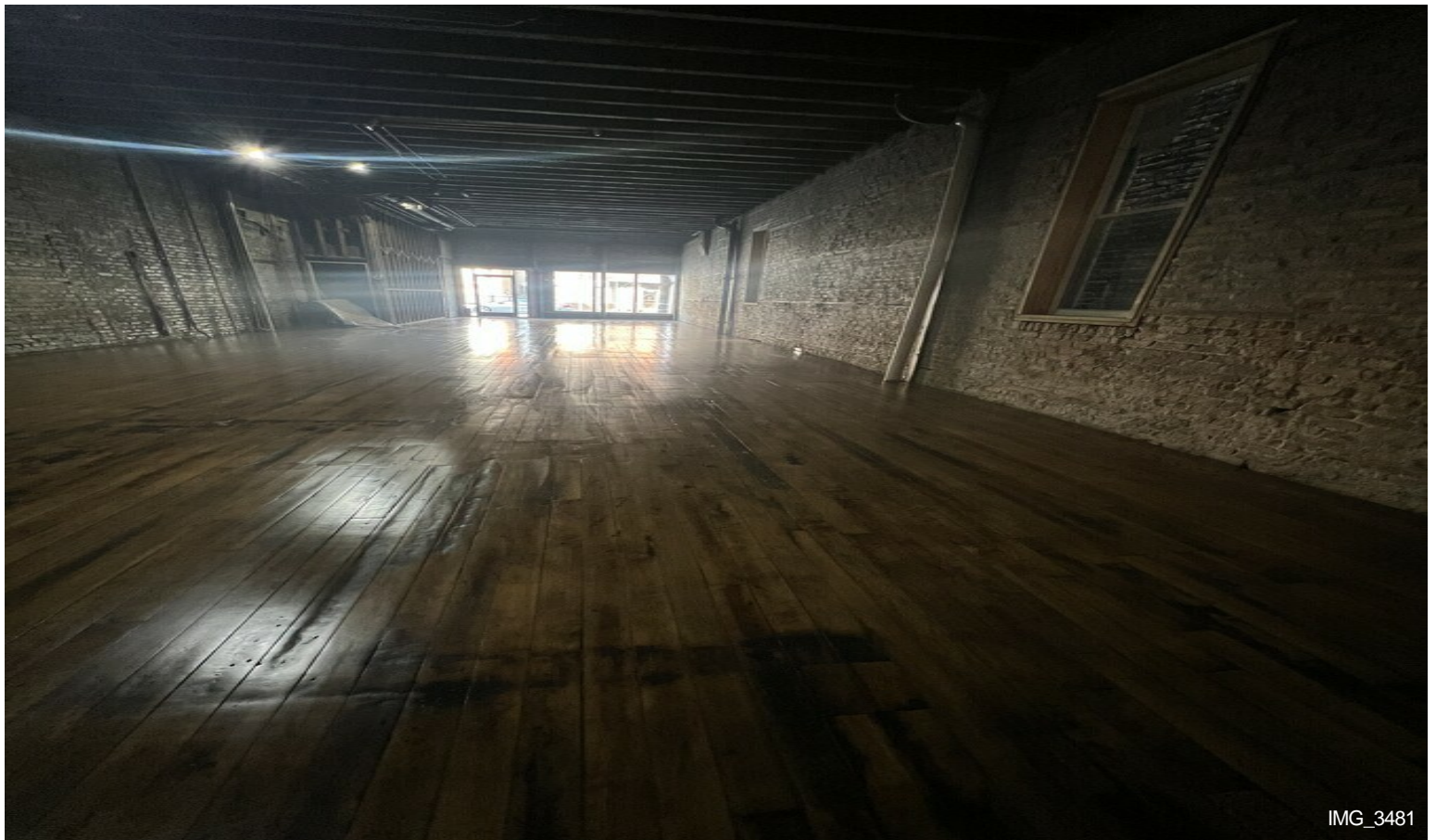


IMG_3476

Property Photos

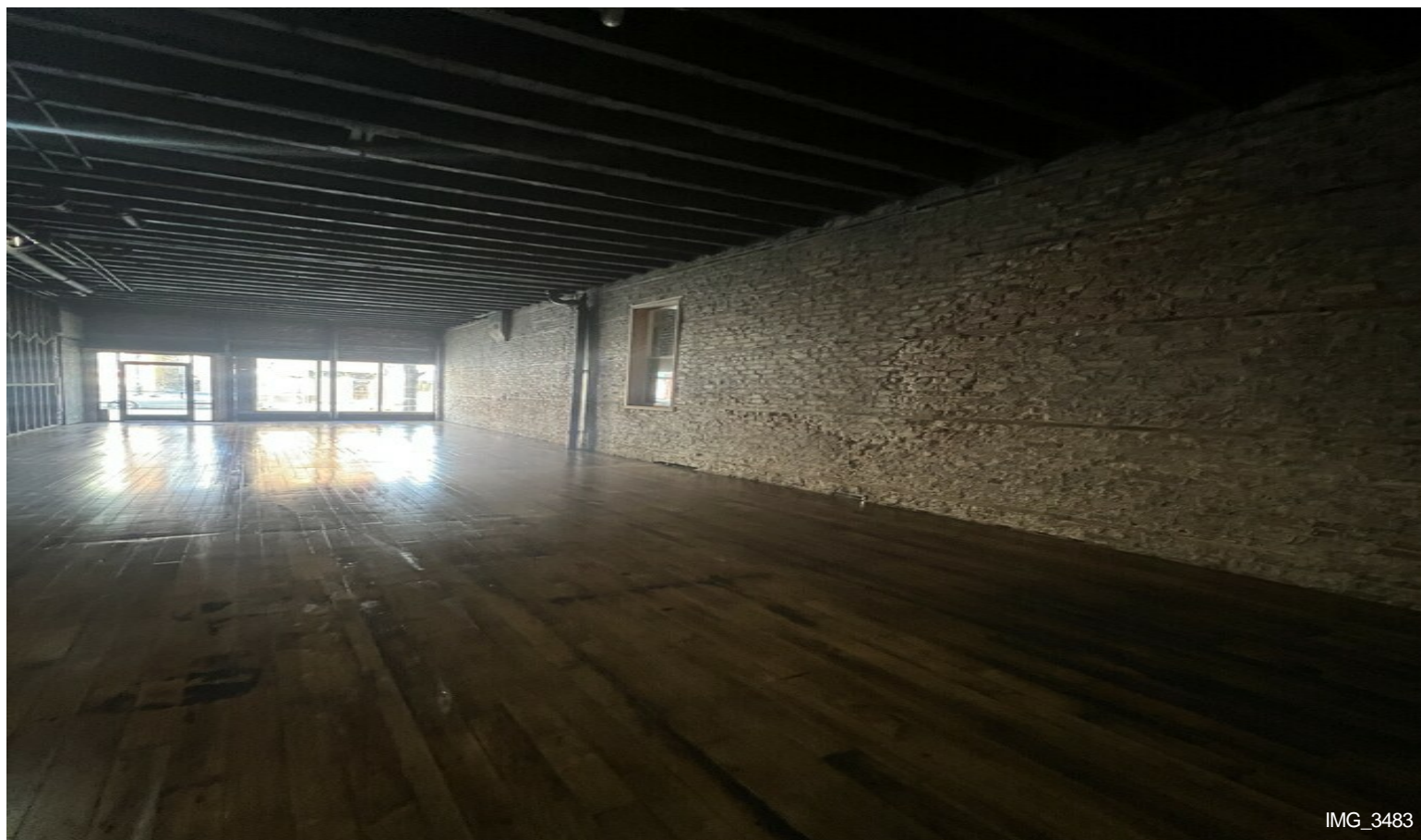


IMG_3478 (1)



IMG_3481

Property Photos



Property Photos



IMG_3489



IMG_3491

Property Photos



Garage



Garage

Property Photos



Garage



Garage

Property Photos



Basement