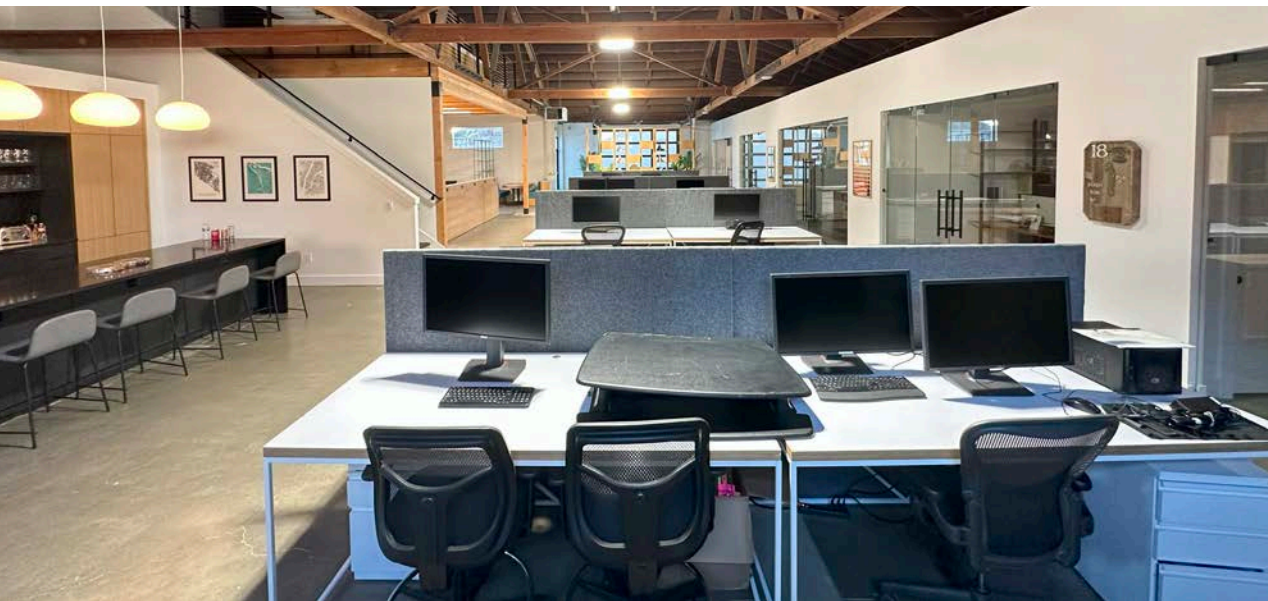
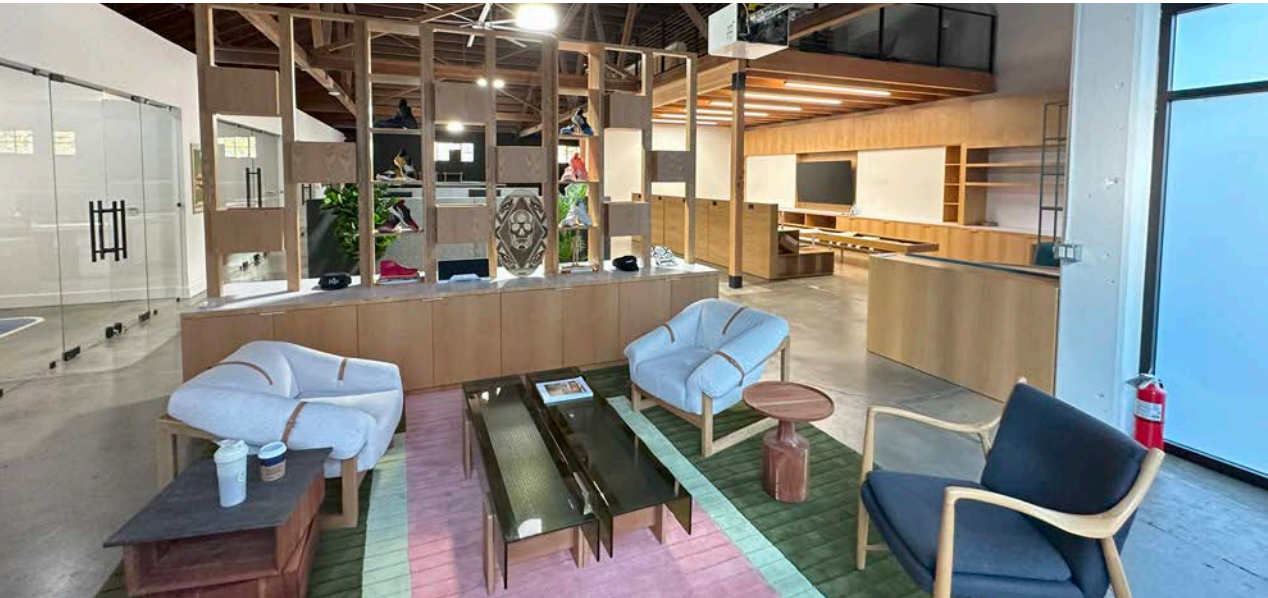


FOR SALE/FOR LEASE

THE STARCH CREATIVE BUILDING

2000 SE MADISON ST, PORTLAND, OR





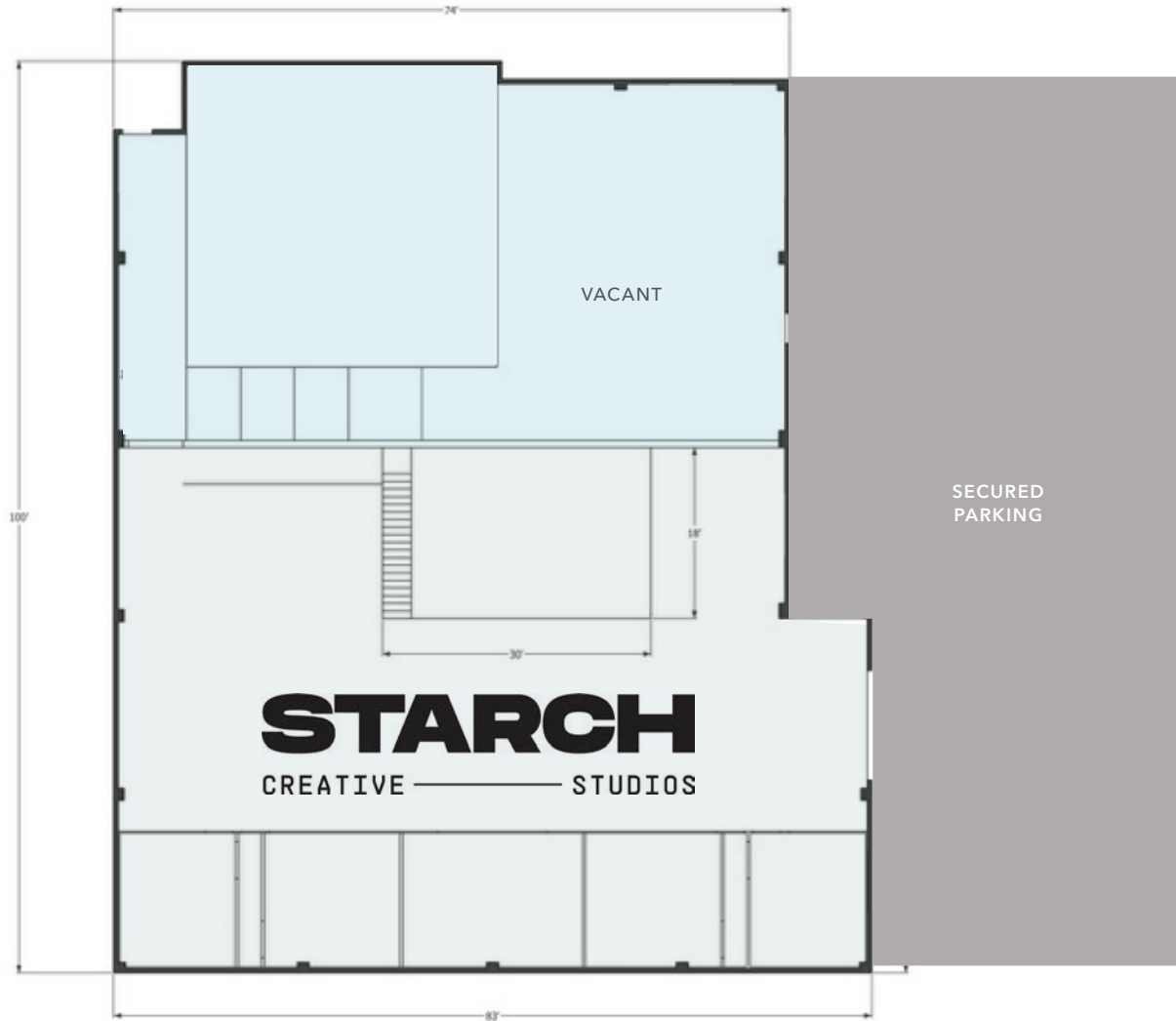
Recently innovated creative office project, with ample upside to a user or potential investor who believes in Portland's east side. The building boasts a private secure off street parking lot and finishes that fit today's creative firm desires.

ADDRESS	2000 SE Madison St, Portland, OR
TYPE	Creative Office (converted industrial)
BUILDING SIZE	7,740 SF
LAND AREA	0.27 AC (11,761 SF)
YEAR BUILT	1957, renovated 2022
CLEAR HEIGHT	18'
PARKING	1.5/1,000
ZONING	CM2 (Commercial)
SALE PRICE	Call for sale price

3K SF
AVAILABLE

\$26.00
LEASE RATE (SF/NNN)

FLOOR PLAN



3,000 SF

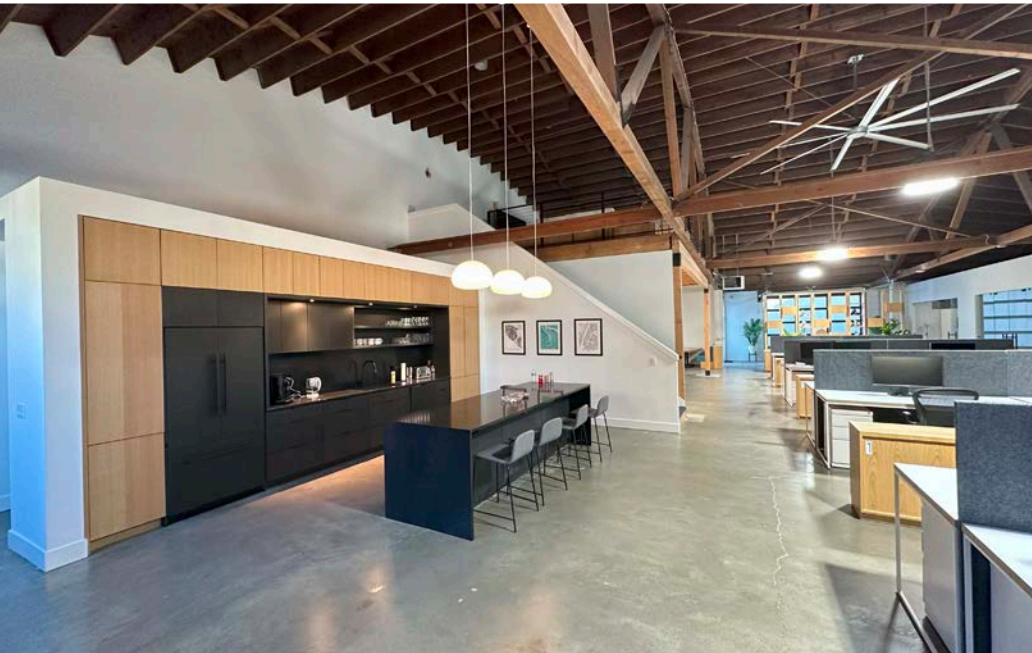
AVAILABLE

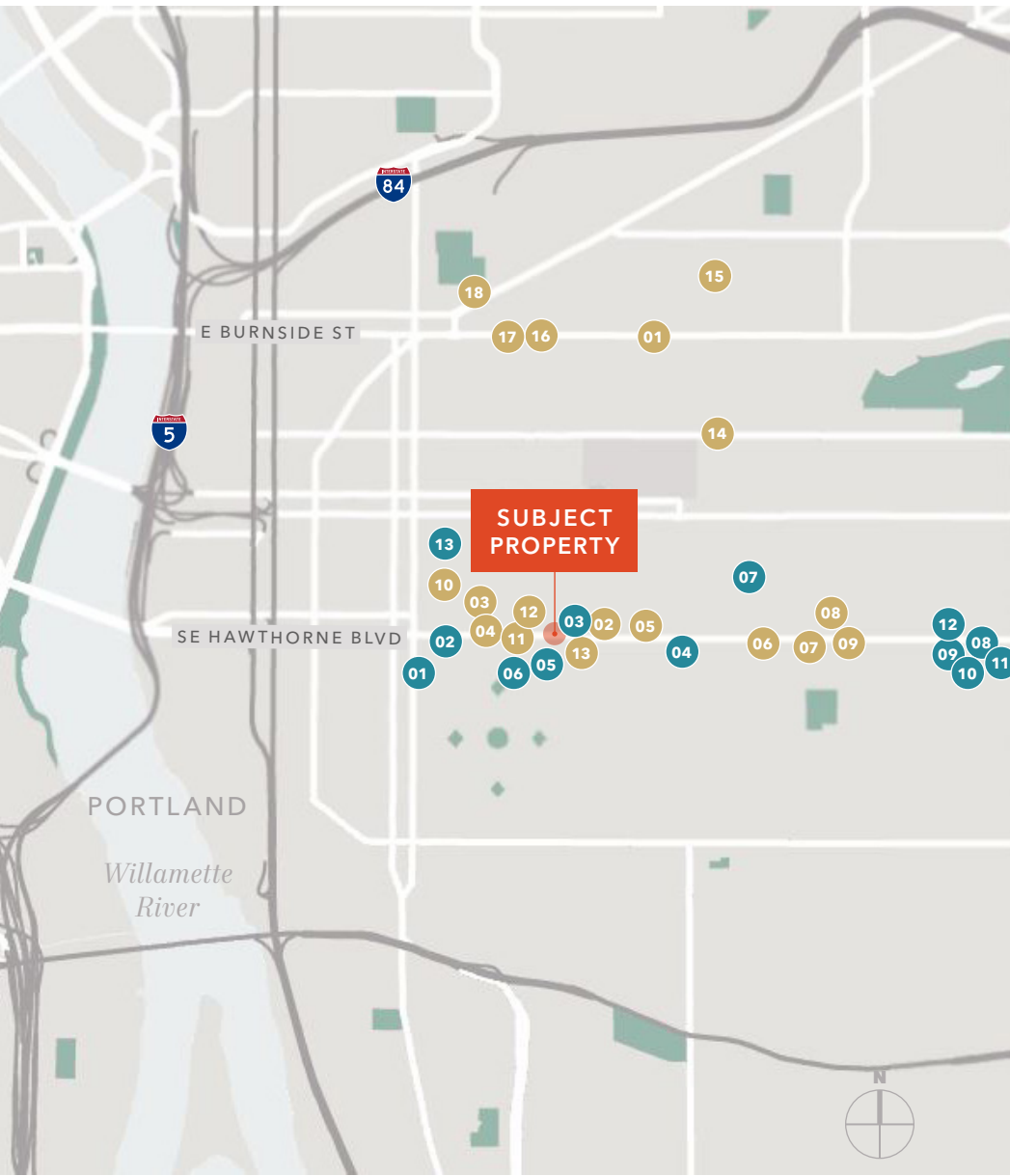
\$26.00

LEASE RATE (SF/NNN)

NOW

AVAILABLE





NEARBY AMENITIES

RESTAURANTS & BARS

- 01 Screen Door
- 02 Jam on Hawthorne
- 03 Asylum Food Cart Pod
- 04 Cartopia Food Carts
- 05 Coava Coffee Roasters
- 06 Cubo
- 07 Farmhouse Kitchen Thai Cuisine
- 08 Fried Egg I'm In Love
- 09 Harlow
- 10 White Owl Social Club
- 11 McMenamins Barley Mill Pub
- 12 GOL PDX
- 13 Nimblefish
- 14 Baby Doll Pizza
- 15 Guero
- 16 The Eastburn
- 17 Fire on the Mountain
- 18 Voodoo Doughnut

RETAIL AND LIFESTYLE

- 01 US Foods Chef's Store
- 02 Helium Comedy Club
- 03 Cinemagic
- 04 Safeway
- 05 7-Eleven
- 06 Hankins Hardware True Value
- 07 H Mart
- 08 Fred Meyer
- 09 McMenamins Bagdad Theater & Pub
- 10 Hawthorne Theater
- 11 New Seasons
- 12 Powell's Books
- 13 Hopscotch Portland

2000 SE
MADISON ST

Exclusively leased by

SEAN MCCARTHY
503.721.2712
sean.mccarthy@kidder.com

GRANT GUERNSEY
503.721.2737
grant.guernsey@kidder.com

KIDDER.COM

This information supplied herein is from sources we deem reliable. It is provided without any representation, warranty, or guarantee, expressed or implied as to its accuracy. Prospective Buyer or Tenant should conduct an independent investigation and verification of all matters deemed to be material, including, but not limited to, statements of income and expenses. Consult your attorney, accountant, or other professional advisor.

