

Lakefront Office Space For Lease  
**LAKE SIDE OFFICE PLAZA**  
1819 S. Dobson Rd • Mesa, AZ 85202



## FEATURES

- Part of a ±15,233 SF Multi-Tenant Office Plaza
- Lakefront Views & Attractive Landscaping
- Covered Parking and Monument Signage Available
- Frontage on Dobson Rd - Great Street Visibility
- C-2 Zoning, City of Mesa
- Direct Access to US-60, Site is Located 1/2 Mile South of Freeway
- 1 Mile From Loop 101

### Tyson Breinholt

480.966.7513 (D)  
602.315.7131 (M)  
tbreinholt@cpiaz.com

### Cliff Jenkins

D 480.634.2332  
M 480.888.6017  
cjenkins@cpiaz.com

### Caleb Allen

D 480.621.3290  
M 480.622.4174  
callen@cpiaz.com



**COMMERCIAL PROPERTIES INC.**

Locally Owned. Globally Connected. CORFAC INTERNATIONAL

TEMPE: 2323 W. University Drive, Tempe, AZ 85281 | 480.966.2301  
SCOTTSDALE: 8777 N. Gainey Center Dr., Suite 245, Scottsdale, AZ 85258 | www.cpiaz.com





# Lakefront Office Space For Lease

## LAKESIDE OFFICE PLAZA

1819 S. Dobson Rd • Mesa, AZ 85202

**Tyson Breinholt**

480.966.7513 (D)

602.315.7131 (M)

tbreinholt@cpiaz.com

**Cliff Jenkins**

D 480.634.2332

M 480.888.6017

cjenkins@cpiaz.com

**Caleb Allen**

D 480.621.3290

M 480.622.4174

callen@cpiaz.com



DEMOGRAPHICS	2 Mile	5 Miles	10 Miles
POPULATION (2023):	72,246	415,422	1,168,484
HOUSEHOLDS:	29,773	159,638	449,401
AVG. HH INCOME:	\$79,613	\$79,056	\$93,362
TOTAL BUSINESSES:	3,542	20,011	55,158

### TRAFFIC COUNTS (VPD)

S Dobson Rd / W Isabella Ave NE	34,007
S Dobson Rd / W Baseline Rd S	27,744
W Baseline Rd / S Dobson Ranch E	25,700
S Dobson Rd / W Quail Creek S	40,345
W Baseline Rd / S Dobson Rd E	23,788
S Dobson Rd / W Baseline Rd N	25,382
W Baseline Rd / S Water Works W	27,310
Superstition Fwy / S Dobson Rd W	40,721
S Dobson Rd / Superstition Fwy S	52,882



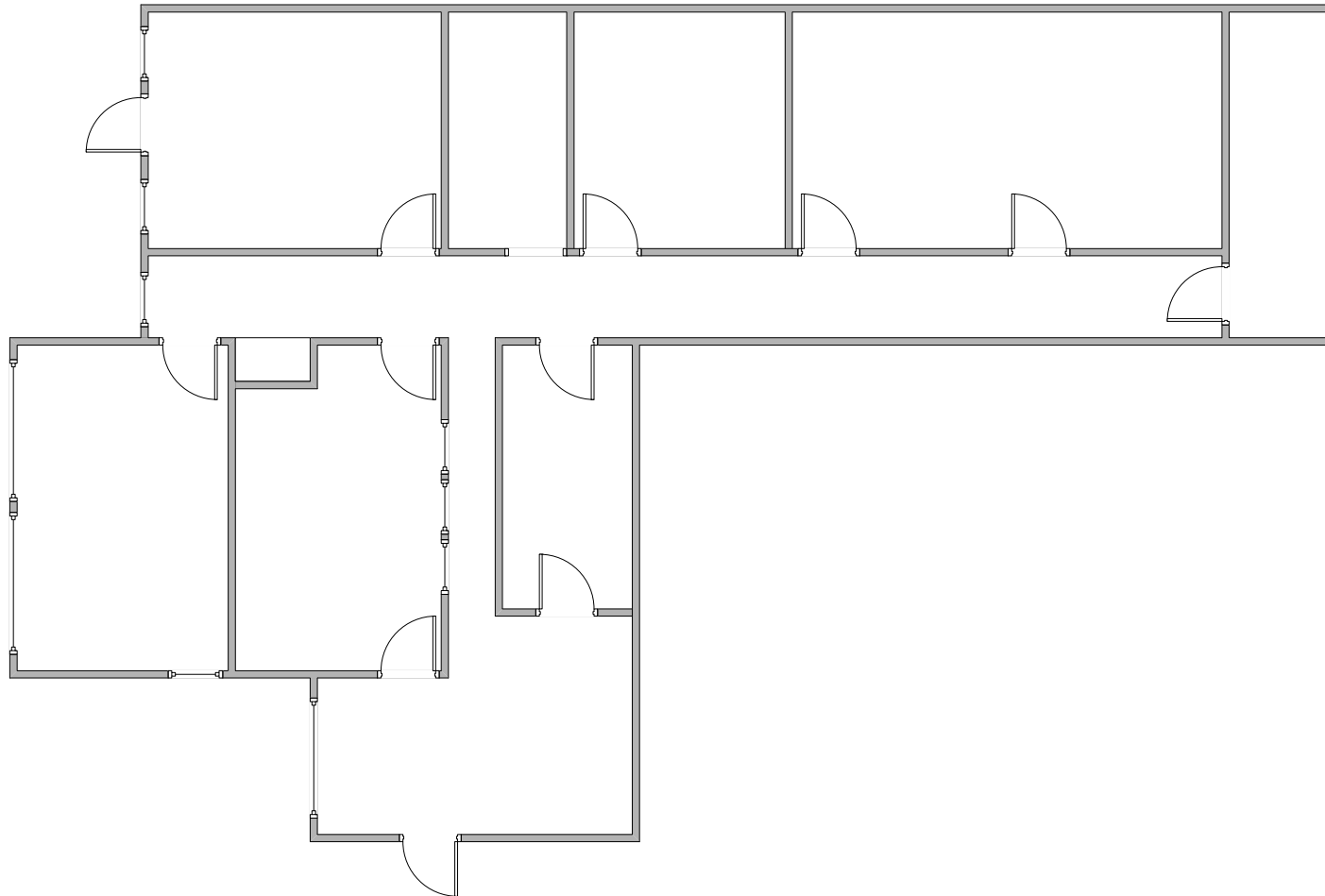
**COMMERCIAL PROPERTIES INC.**

Locally Owned. Globally Connected. CORFAC INTERNATIONAL

TEMPE: 2323 W. University Drive, Tempe, AZ 85281 | 480.966.2301  
SCOTTSDALE: 8777 N. Gainey Center Dr., Suite 245, Scottsdale, AZ 85258 | www.cpiaz.com

## Suite 109

±1,664 SF



**Tyson Breinholt**

480.966.7513 (D)

602.315.7131 (M)

tbreinholt@cpiaz.com

**Cliff Jenkins**

D 480.634.2332

M 480.888.6017

cjenkins@cpiaz.com

**Caleb Allen**

D 480.621.3290

M 480.622.4174

callen@cpiaz.com



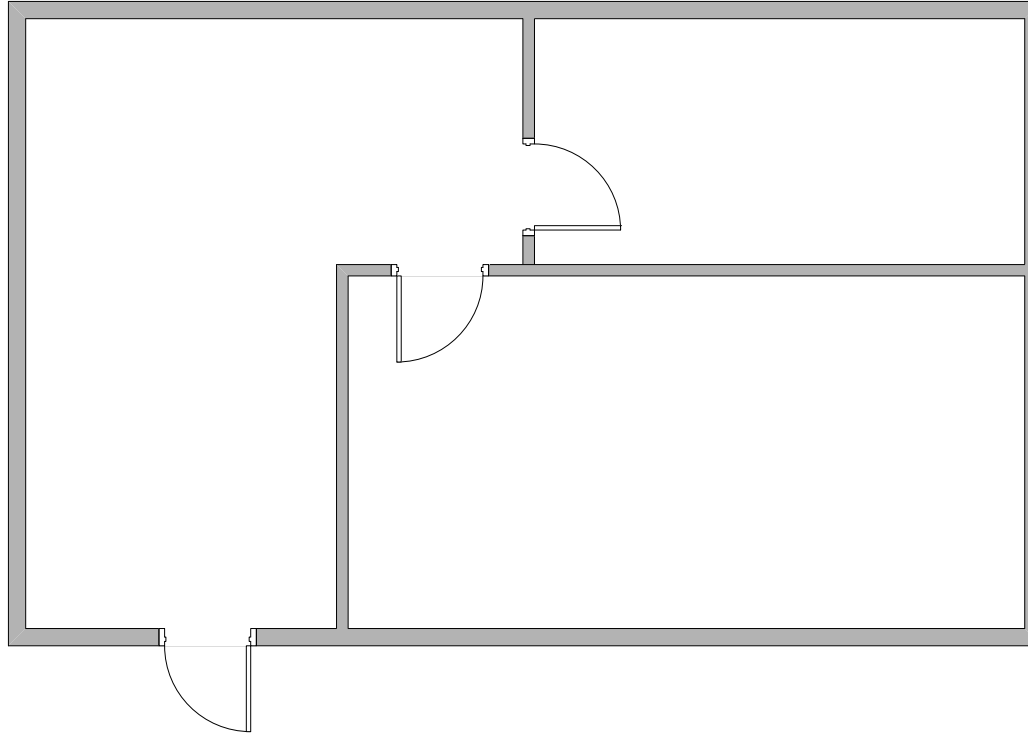
**COMMERCIAL PROPERTIES INC.**

Locally Owned. Globally Connected. CORFAC INTERNATIONAL

TEMPE: 2323 W. University Drive, Tempe, AZ 85281 | 480.966.2301  
SCOTTSDALE: 8777 N. Gainey Center Dr., Suite 245, Scottsdale, AZ 85258 | www.cpiaz.com

## Suite 112

±558 SF



### **Tyson Breinholt**

480.966.7513 (D)

602.315.7131 (M)

tbreinholt@cpiaz.com

### **Cliff Jenkins**

D 480.634.2332

M 480.888.6017

cjenkins@cpiaz.com

### **Caleb Allen**

D 480.621.3290

M 480.622.4174

callen@cpiaz.com



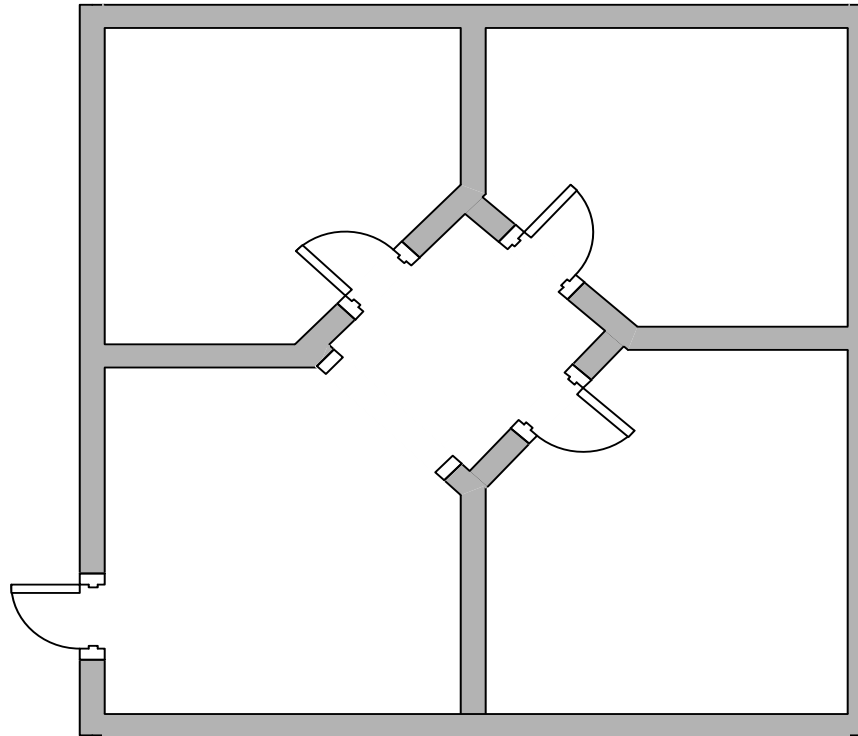
**COMMERCIAL PROPERTIES INC.**

Locally Owned. Globally Connected. CORFAC INTERNATIONAL

TEMPE: 2323 W. University Drive, Tempe, AZ 85281 | 480.966.2301  
SCOTTSDALE: 8777 N. Gainey Center Dr., Suite 245, Scottsdale, AZ 85258 | www.cpiaz.com

## Suite 207

±594 SF



**Tyson Breinholt**

480.966.7513 (D)

602.315.7131 (M)

tbreinholt@cpiaz.com

**Cliff Jenkins**

D 480.634.2332

M 480.888.6017

cjenkins@cpiaz.com

**Caleb Allen**

D 480.621.3290

M 480.622.4174

callen@cpiaz.com



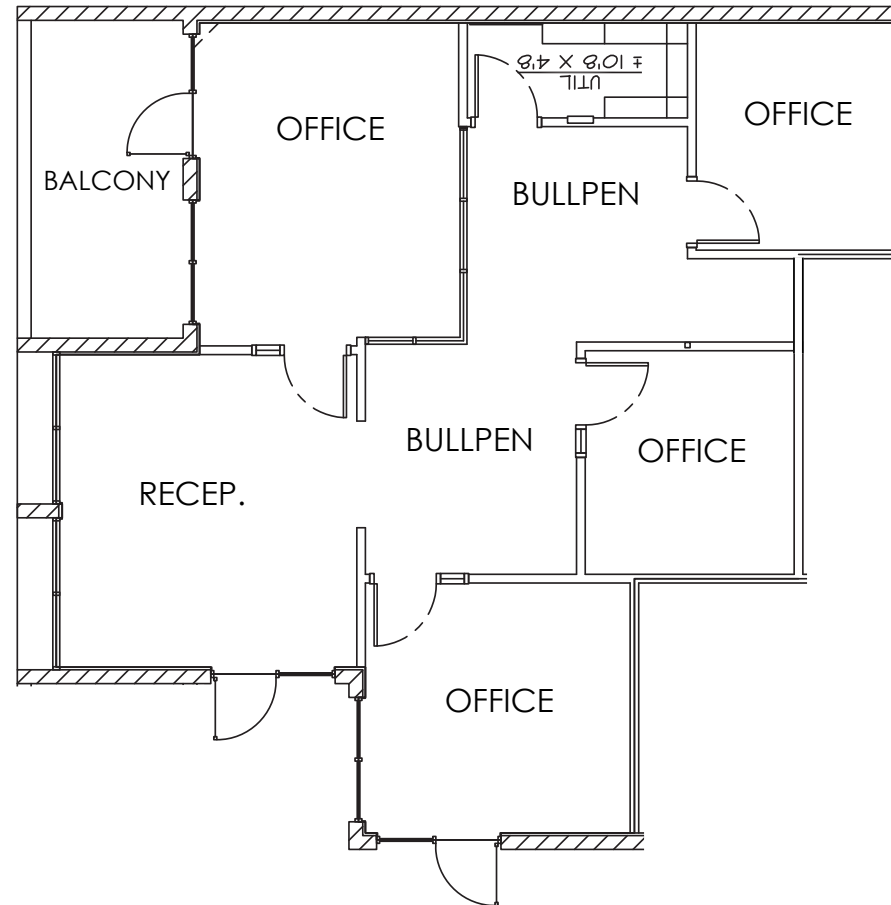
**COMMERCIAL PROPERTIES INC.**

Locally Owned. Globally Connected. CORFAC INTERNATIONAL

TEMPE: 2323 W. University Drive, Tempe, AZ 85281 | 480.966.2301  
SCOTTSDALE: 8777 N. Gainey Center Dr., Suite 245, Scottsdale, AZ 85258 | www.cpiaz.com

## Suite 212

±1,260 SF



**Tyson Breinholt**

480.966.7513 (D)

602.315.7131 (M)

tbreinholt@cpiaz.com

**Cliff Jenkins**

D 480.634.2332

M 480.888.6017

cjenkins@cpiaz.com

**Caleb Allen**

D 480.621.3290

M 480.622.4174

callen@cpiaz.com



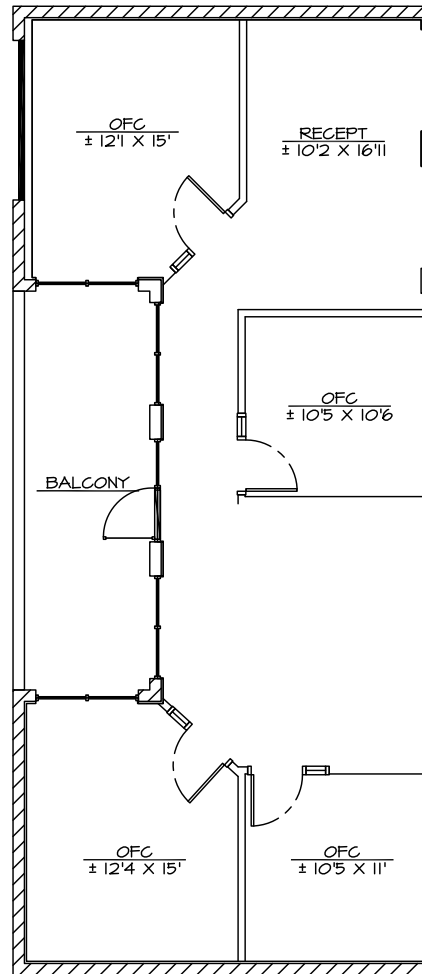
**COMMERCIAL PROPERTIES INC.**

Locally Owned. Globally Connected. CORFAC INTERNATIONAL

TEMPE: 2323 W. University Drive, Tempe, AZ 85281 | 480.966.2301  
SCOTTSDALE: 8777 N. Gainey Center Dr., Suite 245, Scottsdale, AZ 85258 | www.cpiaz.com

## Suite 216

±1,227 SF



**Tyson Breinholt**

480.966.7513 (D)

602.315.7131 (M)

tbreinholt@cpiaz.com

**Cliff Jenkins**

D 480.634.2332

M 480.888.6017

cjenkins@cpiaz.com

**Caleb Allen**

D 480.621.3290

M 480.622.4174

callen@cpiaz.com



**COMMERCIAL PROPERTIES INC.**

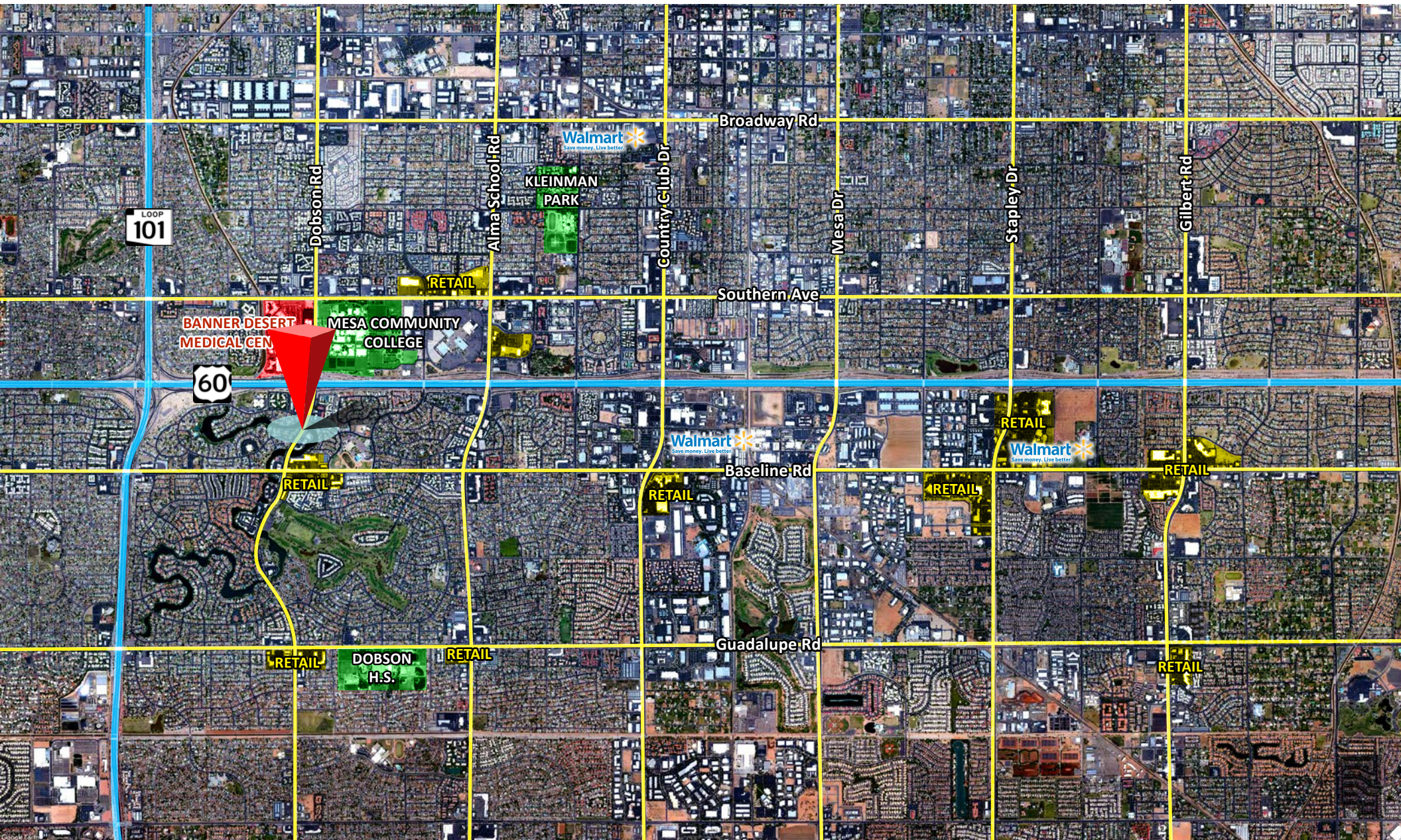
Locally Owned. Globally Connected. CORFAC INTERNATIONAL

TEMPE: 2323 W. University Drive, Tempe, AZ 85281 | 480.966.2301  
SCOTTSDALE: 8777 N. Gainey Center Dr., Suite 245, Scottsdale, AZ 85258 | www.cpiaz.com



# LAKESIDE OFFICE PLAZA

1819 S. Dobson Rd • Mesa, AZ 85202



**Tyson Breinholt**

480.966.7513 (D)

602.315.7131 (M)

tbreinholt@cpiaz.com

**Cliff Jenkins**

D 480.634.2332

M 480.888.6017

cjenkins@cpiaz.com

**Caleb Allen**

D 480.621.3290

M 480.622.4174

callen@cpiaz.com



**COMMERCIAL PROPERTIES INC.**

Locally Owned. Globally Connected. CORFAC INTERNATIONAL

TEMPE: 2323 W. University Drive, Tempe, AZ 85281 | 480.966.2301  
SCOTTSDALE: 8777 N. Gainey Center Dr., Suite 245, Scottsdale, AZ 85258 | www.cpiaz.com

The information contained herein has been obtained from various sources. We have no reason to doubt its accuracy; however, J & J Commercial Properties, Inc. has not verified such information and makes no guarantee, warranty or representation about such information. The prospective buyer or lessee should independently verify all dimensions, specifications, floor plans, and all information prior to the lease or purchase of the property. All offerings are subject to prior sale, lease, or withdrawal from the market without prior notice.

12/23/25