

# 10735 WILLOWS ROAD NORTHEAST SUITE 100

Redmond, WA 98052



OFFICE SUBLEASE | AVAILABLE MAY 1, 2024

**9,735 RSF**

HUGHESMARINO

# BUILDING INFORMATION



## **BUILDING**

Willow Creek Corporate Center  
- Building C

## **ADDRESS**

10735 Willows Road Northeast,  
Suite 100,  
Redmond, WA 98052

## **AVAILABLE**

April 1, 2024

## **ASKING RATE**

\$28.00/SF NNN

## **AVAILABLE THROUGH**

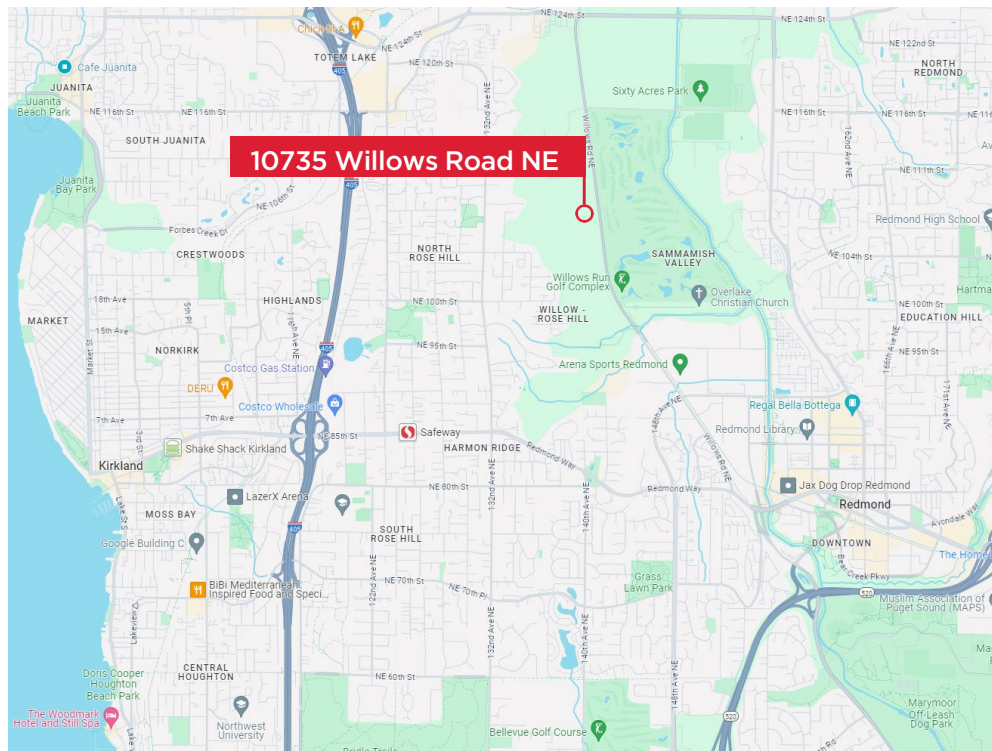
May 31, 2026

**\*\*Direct Longer-term deal possible  
with Landlord.\*\***

## **ADDITIONAL FEATURES**

- 11 Classrooms
- 9 Private Offices
- Storage Areas
- 3/1000 SF Parking Ratio
- Comcast High Speed Ethernet Fiber

# LOCATION HIGHLIGHTS



**FREEWAY ACCESS**



**RETAIL & RESTAURANTS**



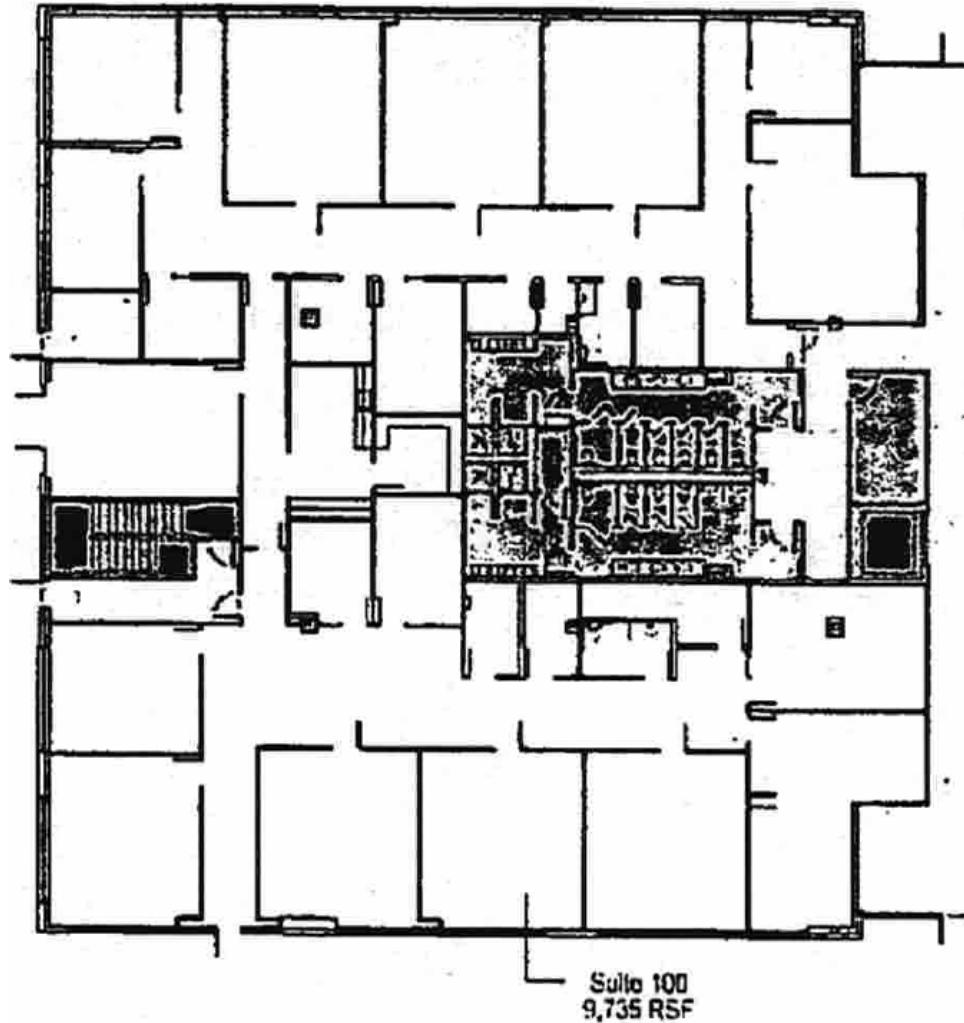
**HEALTH CLUB**



## KEY HIGHLIGHTS

- Excellent I-405 access
- Abundant Retail, Restaurant & Health Club Amenities nearby
- 5-minute walk from Bus Stop serving Route 930
- Walking trails behind Willow Creek Corporate Center
- Less than 10 Minutes to Downtown Redmond
- Less than 40 Minutes to Downtown Seattle & Bellevue

# FLOOR PLAN



## SPACE HIGHLIGHTS

- 11 Classrooms
- 9 Private Offices
- Storage Areas
- Break Room
- Dedicated Entrance from Exterior of Building

10735 WILLOWS ROAD NORTHEAST, SUITE 100



# CONTACT INFORMATION



**AUSTIN LASHLEY**

[austin@hughesmarino.com](mailto:austin@hughesmarino.com)

425.502.2905

Broker Lic. #132863

**1301 2<sup>ND</sup> AVENUE #2500**  
**SEATTLE, WA 98101**  
844.662.6635 | [hughesmarino.com](http://hughesmarino.com)

**HUGHESMARINO**