

For sublease

220,000 SF Available

505 Route 33, Millstone, New Jersey



Property specifications

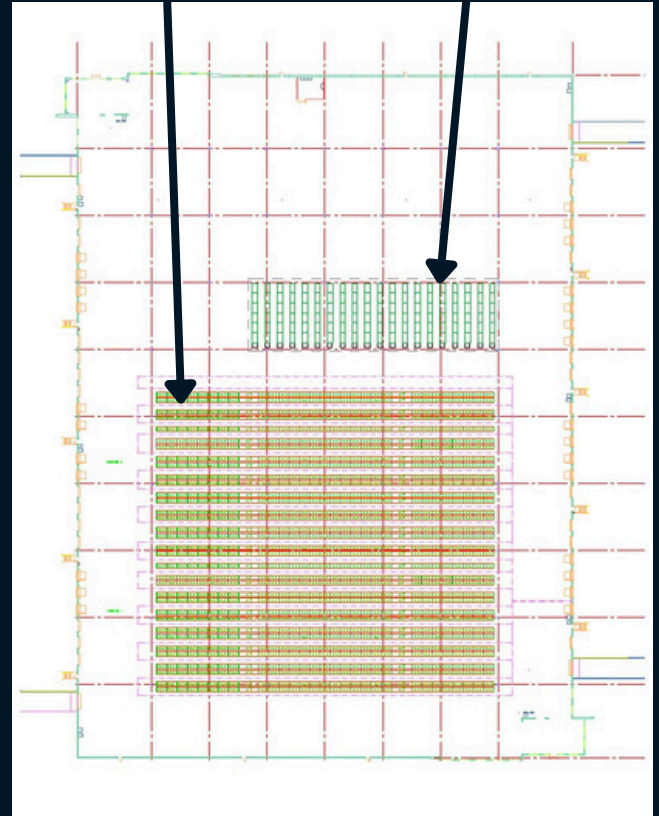
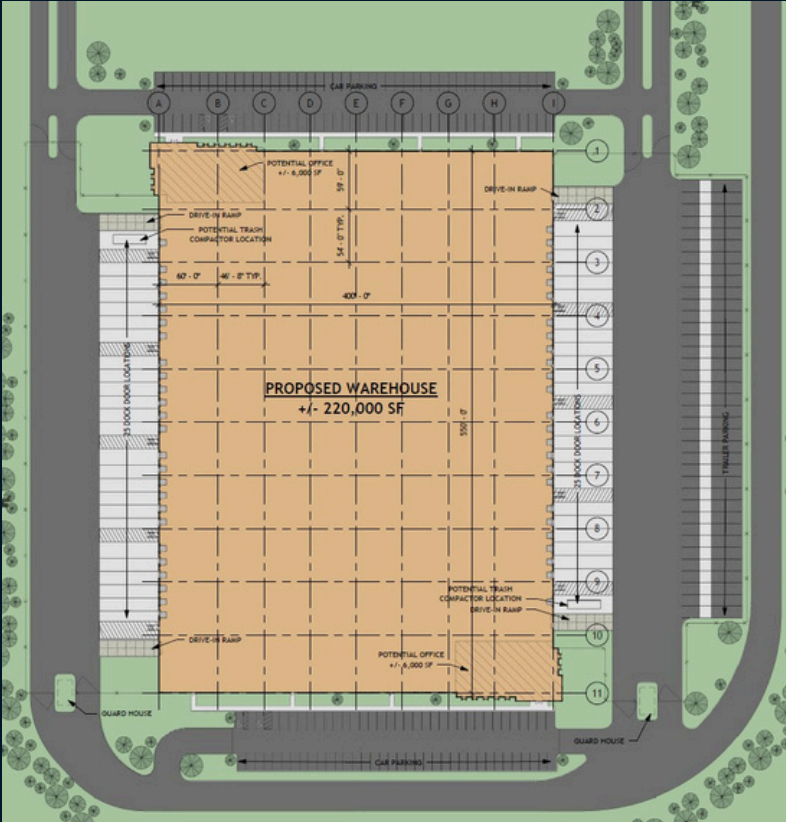
- 220,000 SF total building
- 4,098 SF office
- Built 2022
- 550' x 400' dimensions
- 36' clear height
- 54' x 46'-8" column spacing
- 60' speed bays
- 50 (9'x10') dock doors
- Cross-dock format
- 4 (12'x14') drive-in doors on grade
- 34 trailer spaces
- 160 car parking spaces
- ESFR sprinkler system
- June 1, 2025 occupancy

Sublease term through February 29, 2028

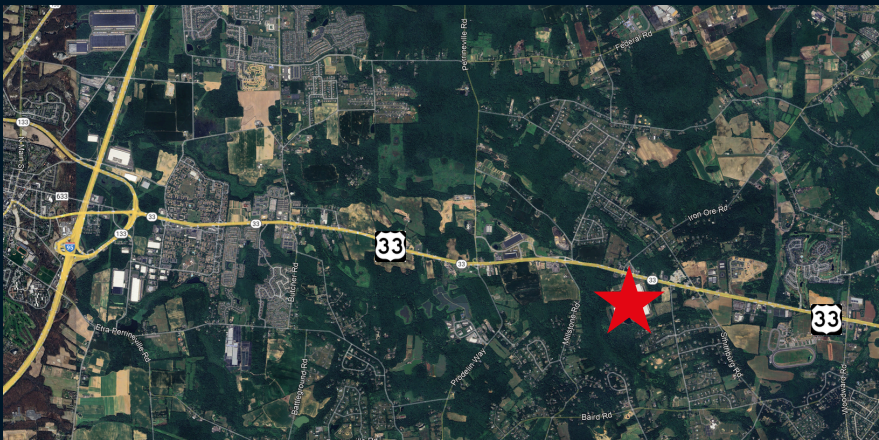
Site Plan

10,102 pallet positions

3,700 shelf locations



Location map



Key distances

- NJ Turnpike (Exit 8A) - 6 Miles
- U.S. Route 130 - 7.5 Miles
- State Route 1 - 16 Miles
- Interstate-195 - 16.5 Miles
- Port Newark/Elizabeth - 45 Miles
- Manhattan, NY - 58.5 Miles
- Philadelphia, PA - 51.5 Miles

JLL

Gary Politi
gary.politi@jll.com
+1 908 391 9059

Michael Viera
michael.viera@jll.com
+1 848 327 0082