



10000 Midlantic Drive – 2,057± SF Sublease

Mount Laurel, NJ

REDUCED



- Class “A” Office Space
- 2,507± Rentable Square Feet
- **Reduced Asking Rental Rate of \$10.00/SF NNN (Under Market)**
- Term Expires 3/31/2026
- Fully Wired for Plug and Play
- Furniture and Fixtures Available
- Fourth Floor with Elevated Views
- Set on 250 Acres at the Intersection of I-295 and Route 38
- Located 15 miles to Center City Philadelphia and 4 miles to Cherry Hill, NJ

LEASING INFORMATION:

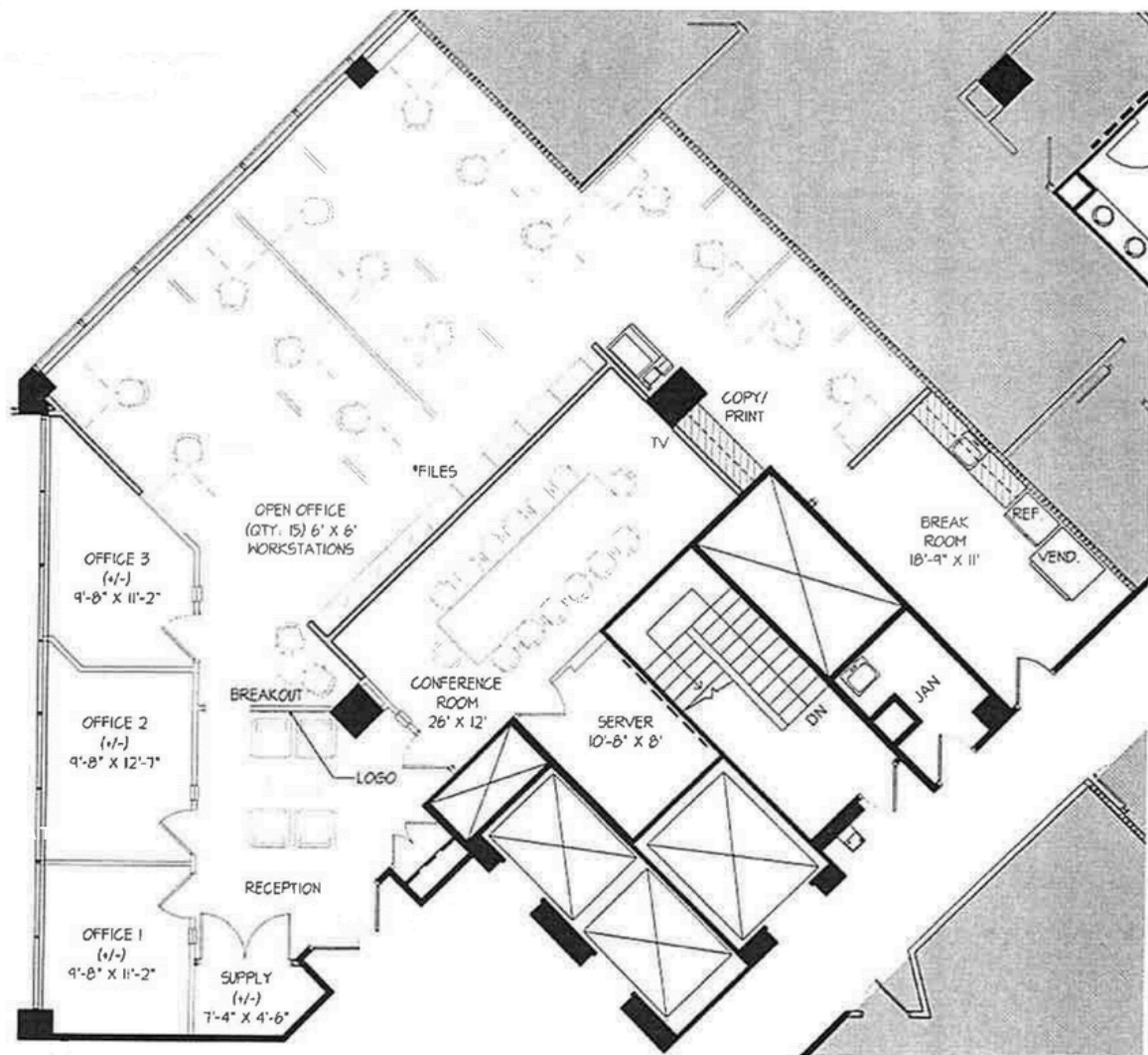
Dave Butera
267.767.1100
dbutera@gola.com

GOLA CORPORATE REAL ESTATE, INC.
2490 Boulevard Of The Generals, Suite 100
Norristown, PA 19403



10000 Midlantic Drive – 2,057± SF Sublease

Mount Laurel, NJ



LEASING INFORMATION:

Dave Butera
267.767.1100
dbutera@gola.com

GOLA CORPORATE REAL ESTATE, INC.
2490 Boulevard Of The Generals, Suite 100
Norristown, PA 19403