

3012 SHAFFER AVE SE
KENTWOOD, MICHIGAN

OFFICE FOR LEASE
9,988 Square Feet Available



**SIGNATURE
ASSOCIATES**
KNOW SIGNATURE | KNOW RESULTS

MIXED-USE OPPORTUNITY



PROPERTY FEATURES

- 9,988 total building square feet
- Located on 1.322 acres
- Strategic location in the Kentwood Public School District with easy access to major corridors and community resources
- Ample natural light from numerous sun windows
- Well-sized common areas and multi-purpose spaces
- Private courtyard offers outdoor activity, break areas or outdoor therapy or potential outdoor programming.
- Zoned C-2
- Ideal for school/daycares classrooms and administration space; veterinarian clinic or kennel; Autism support and therapy centers; Medical care/training facilities (outpatient clinics, patient services)
- Lease Rate: \$17.96/sf NNN (\$14,950/mo)



For more information, please contact:

JOE RIZQALLAH
(616) 822 6310
jrizzqallah@signatureassociates.com

CAROLYN BOJI
(616) 213 4560
cboji@signatureassociates.com

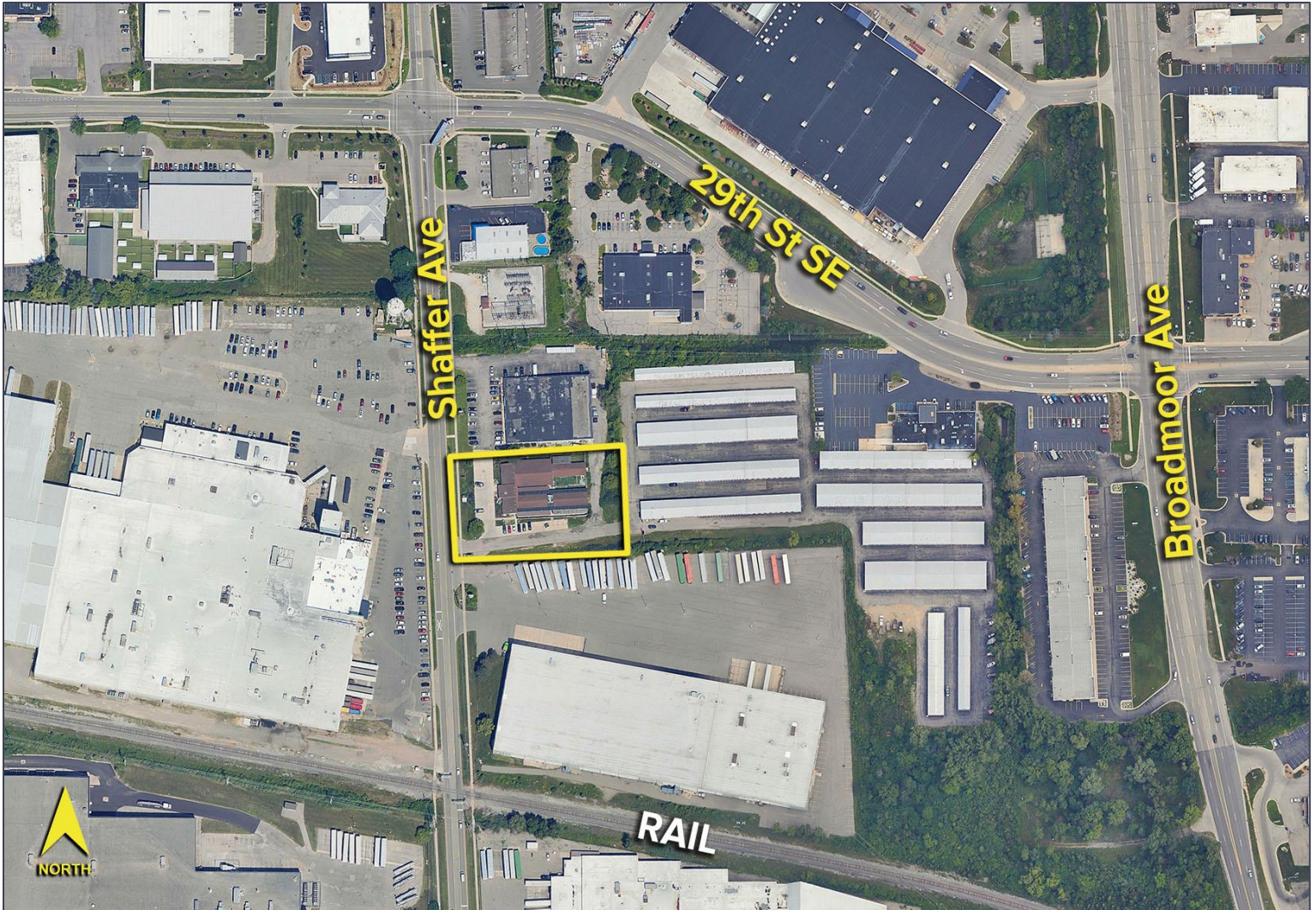
SIGNATURE ASSOCIATES
1188 East Paris Ave SE, Suite 220
Grand Rapids, MI 49546
www.signatureassociates.com

3012 Shaffer Ave SE – Kentwood, Michigan

Office For Lease

9,988
Square Feet
AVAILABLE

Aerial



For more information, please contact:

JOE RIZQALLAH
(616) 822 6310
jrizzqallah@signatureassociates.com

CAROLYN BOJI
(616) 213 4560
cboji@signatureassociates.com

SIGNATURE ASSOCIATES
1188 East Paris Ave SE, Suite 220
Grand Rapids, MI 49546
www.signatureassociates.com