

Davis Professional Park

5225 Nesconset Hwy., Port Jefferson Station





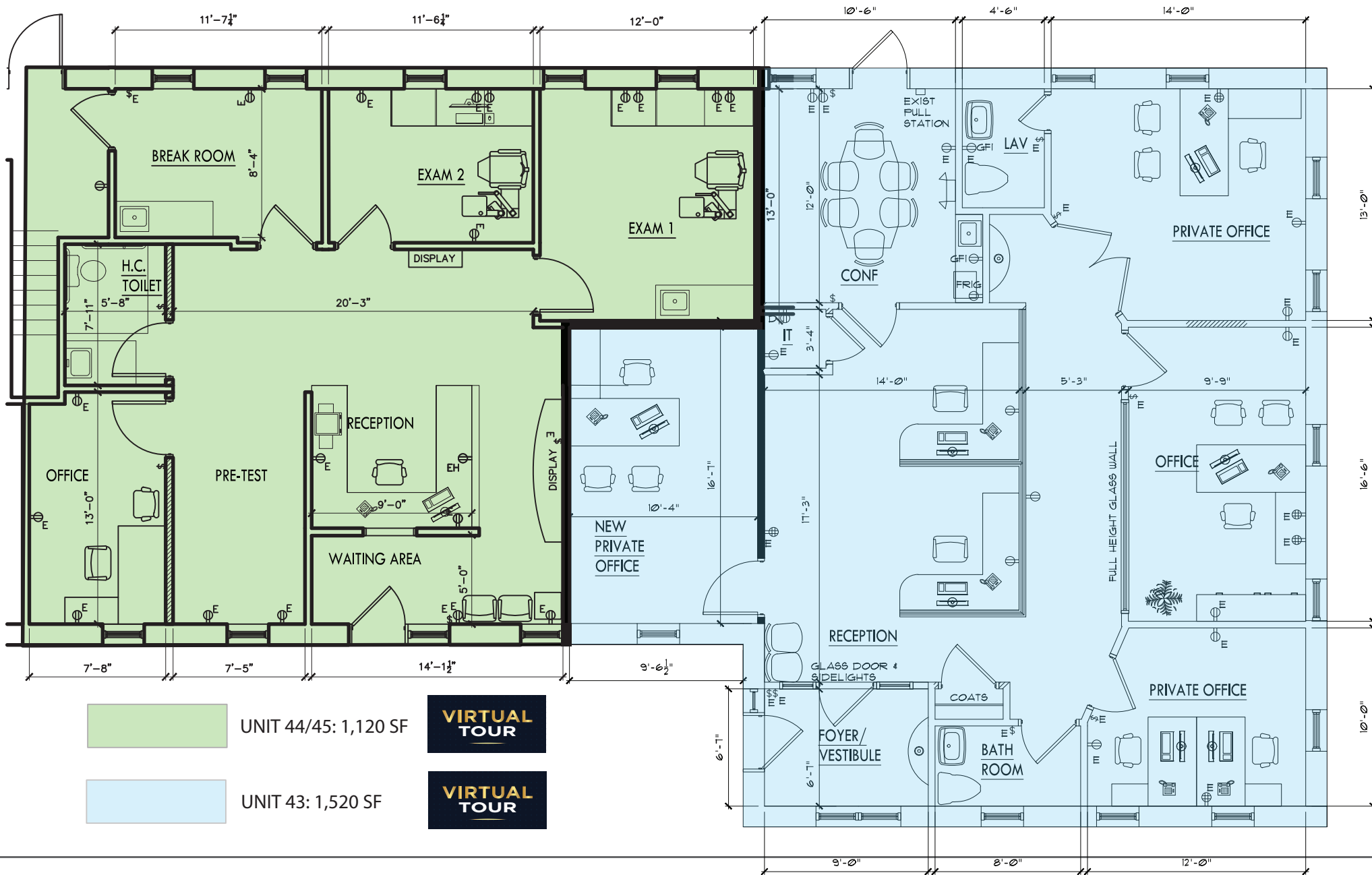
SUITES AVAILABLE

- **Building 8 Unit 43: 1,520 SF**
- **Building 8 Unit 44/45: 1,120 SF**

*Suites can be combined for
2,640 SF

- Close proximity to all area hospitals : John T. Mather Memorial (1.5 mi), St. Charles (2.2 mi), Stony Brook University Hospital (7 mi)
- Built to suit turn-key installation
- Walking distance to local shopping
- 1 mile from Port Jefferson Train Station
- Ample parking
- On-site storage
- High speed internet access
- Signage available

Building 8-10 Unit 43-45: 1,120 - 2,640 SF



FOR MORE INFORMATION:

John Finn

631.360.9000
jfinn@drgrealty.com

Pelops Damianos

631.360.9000
pdamianos@drgrealty.com

John Greco

631.360.9000
jgreco@drgrealty.com



FOR MORE INFORMATION:

John Finn
631.360.9000
jfinn@drgrealty.com

Pelops Damianos
631.360.9000
pdamianos@drgrealty.com

John Greco
631.360.9000
jgreco@drgrealty.com



55
YEARS