

28515

WESTINGHOUSE PLACE

5th Floor (The Penthouse) | Valencia, CA 91355



The Penthouse | 29,941 SF Elite Office Space. Modern Design. Panoramic Views.

CBRE

THE
RMR
GROUP





28515

WESTINGHOUSE PLACE

28515 Westinghouse Place understands that your office is your brand and that first impressions mean everything.

Visitors are immediately welcomed into an architecturally stunning space. The recently renovated two-story lobby boasts sleek glass panels, contemporary lighting and a sophisticated blend of soaring white-tiled walls and warm wood-toned accents. Teal baseboards provide a vibrant dollop of color in the bright space and pairs well with modern furnishings.

This prime Class A office building, surrounded by an abundance of premium amenities and unsurpassed panoramic penthouse views, offers a uniquely Southern California working experience and a first impression as elite as your own.



PROPERTY HIGHLIGHTS

PROFESSIONAL IMAGE. PROMINENT LOCATION.

- Prime, Class A Office
- Best In Market Penthouse Views
- Surface and Structure Parking
- Immediate Access to the Golden State Freeway (I-5) and Highway 126
- Large and Efficient 29,941 RSF Floor Plate- Potentially Divisible
- Pro-business Community With New Residential Developments (FivePoint Valencia, Tesoro Highlands and More)
- Prominent Visibility to Over 300,000 Cars Daily
- Surrounded by a Highly Qualified Labor Pool (3.3 million People Within a 45-minute Commute)
- Adjacent to Courtyard by Marriott & Embassy Suites and in Close Proximity to a Range of Retail, Dining and Entertainment Options



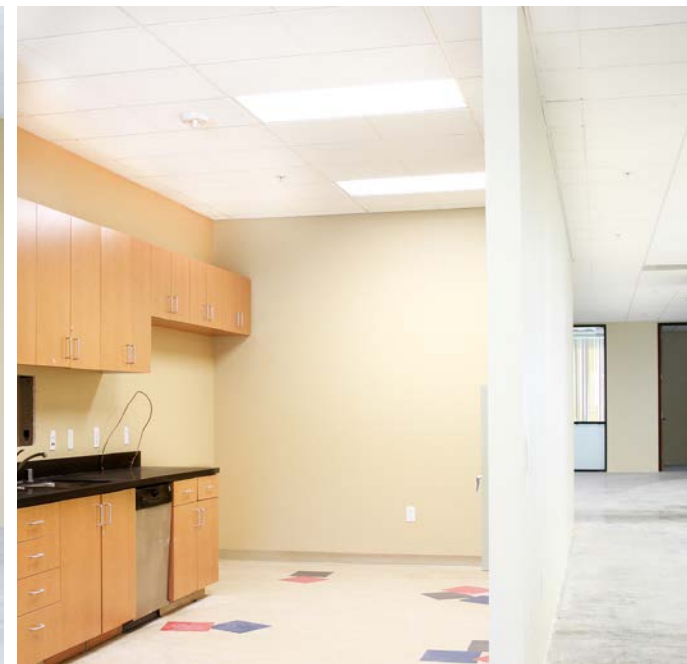


2008 Steel-Frame Construction

Newly Renovated Lobby Provides Sleek and Modern Welcome



Single Tenant Professional Build Out with Extensive 360°, Best in Market Penthouse Views



LOCATION MAP

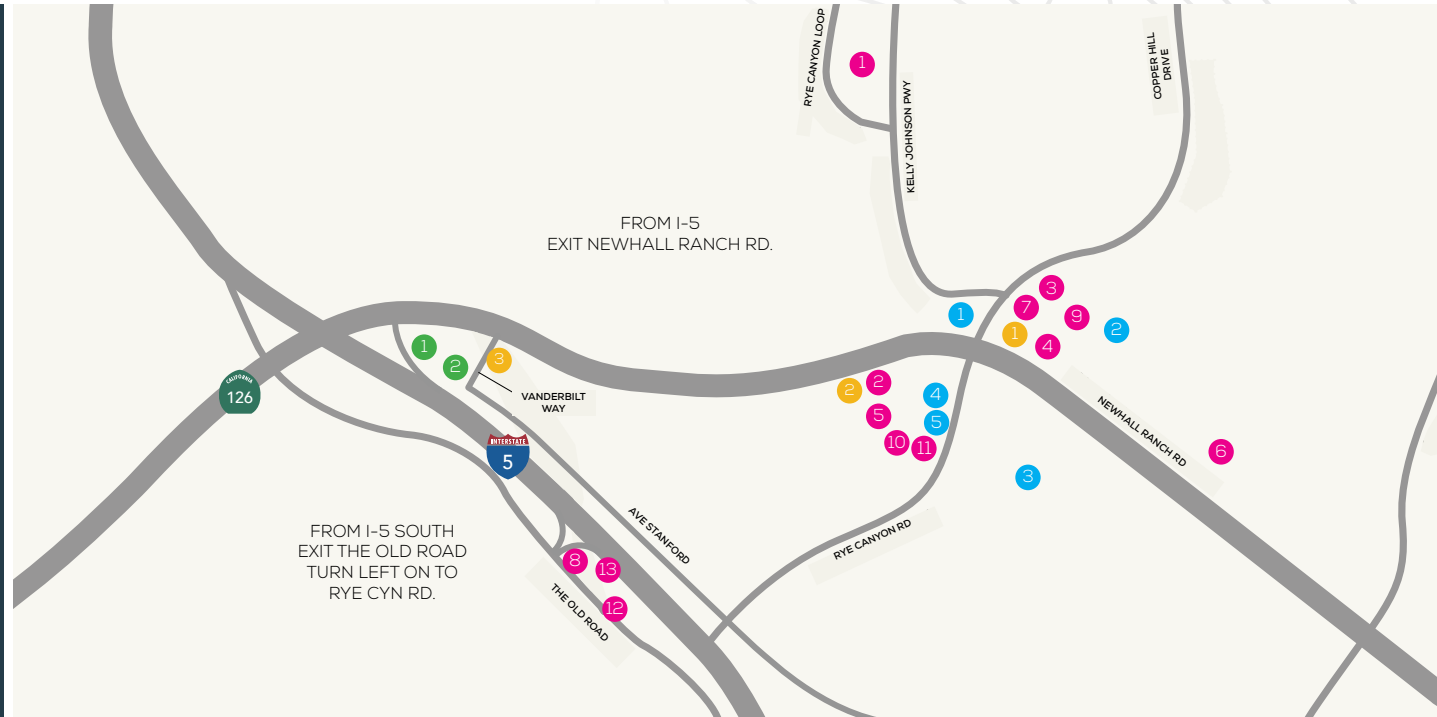
YOU'VE OFFICIALLY ARRIVED.



AREA OVERVIEW

ENERGETIC AND THRIVING VALENCIA

28515 Westinghouse Place in Valencia, California represents a rare opportunity to expand your business in one of the most desirable submarkets in the United States. Thriving, energetic and densely amenitized, the area surrounding 28515 Westinghouse Place features countless premier shopping, dining and entertainment options as well as immediate access to major highways. 28515 Westinghouse Place is your next smart business move.



RESTAURANTS

- 1: Wolf Creek Brewing
- 2: New Moon
- 3: Panda Express
- 4: Chipotle Mexican Grill
- 5: George's Bistro
- 6: Subway
- 7/8: Starbucks
- 9: Wendy's
- 10: The Habit Burger
- 11: Sushi One
- 12: Jimmy Deans
- 13: Tommy's

STORES

- 1: Walmart
- 2: Office Depot
- 3: The Home Depot
- 4: Smart & Final
- 5: L.A. Fitness

BANKS

- 1: Chase Bank
- 2: U.S. Bank
- 3: Community Bank

HOTELS

- 1: Courtyard Marriott Santa Clarita
- 2: Embassy Suites Valencia





28515

WESTINGHOUSE PLACE

For more information, please contact

Craig R. Peters

Vice Chairman

Lic. 00906542

T: +1 818 907 4616

craig.peters@cbre.com

Richard A. Ramirez

First Vice President

Lic. 01792270

T: +1 818 907 4639

richard.ramirez@cbre.com

THE
RMR
GROUP

CBRE

© 2024 CBRE, Inc. All rights reserved. This information has been obtained from reliable sources but has not been verified for accuracy or completeness. CBRE, Inc. makes no guarantee, representation, or warranty and accepts no responsibility or liability for the accuracy, completeness, or reliability of the information contained herein. You should conduct a careful, independent investigation of the property and verify all information. Any reliance on this information is solely at your own risk. CBRE and the CBRE logo are service marks of CBRE, Inc. All other marks displayed on this document are the property of their respective owners, and the use of such marks does not imply any affiliation with or endorsement of CBRE. Photos herein are the property of their respective owners. Use of these images without the express written consent of the owner is prohibited.