

# CARDINAL

— PARK —





# CARDINAL

—PARK—

## PROPERTY HIGHLIGHTS

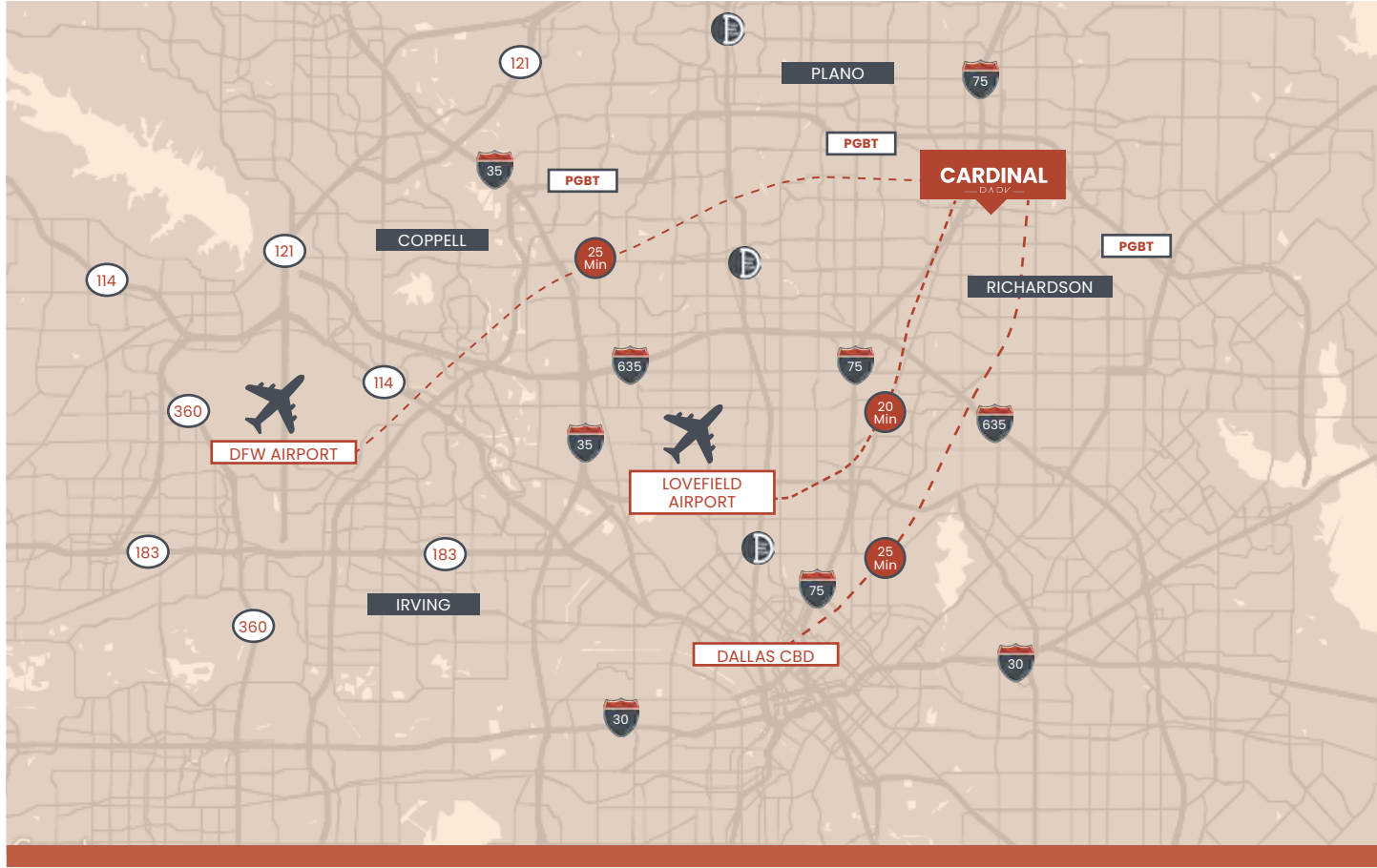
- 37,345 SF available in three office buildings
  - **Cardinal Park 6** – 6,462 RSF
  - **Cardinal Park 7** – 7,393 RSF
  - **Cardinal Park 8** – 23,490 RSF
- Strong, institutional ownership
- Backup generator onsite
- Efficient floorplates
- Ample natural light
- Top of building signage available
- Full building opportunities
- Expansive 6/1,000 parking
- Located in the heart of the Richardson Telecom Corridor
- Close proximity to restaurants, housing, and DART





## AREA AMENITIES

Cardinal Park is located in the heart of the Richardson Telecom Corridor centered around a dense employee base, multiple major thoroughfares, easy DART Rail access and numerous restaurants and hotels.





## CARDINAL PARK 6

1201 Kas Dr

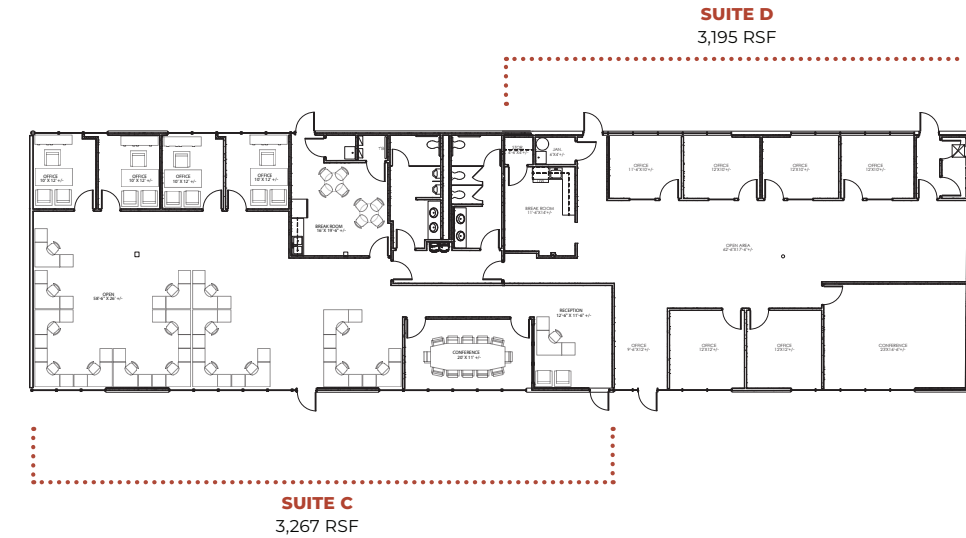
- 10,085 RSF
- 1 Floor
- 6,462 RSF Available
- Surface parking: 6/1,000 SF
- Available Spec Suites



## FLOOR PLANS

### CARDINAL PARK 6 – Suites C & D

6,462 RSF



## CARDINAL PARK 7

1705 N Plano Rd

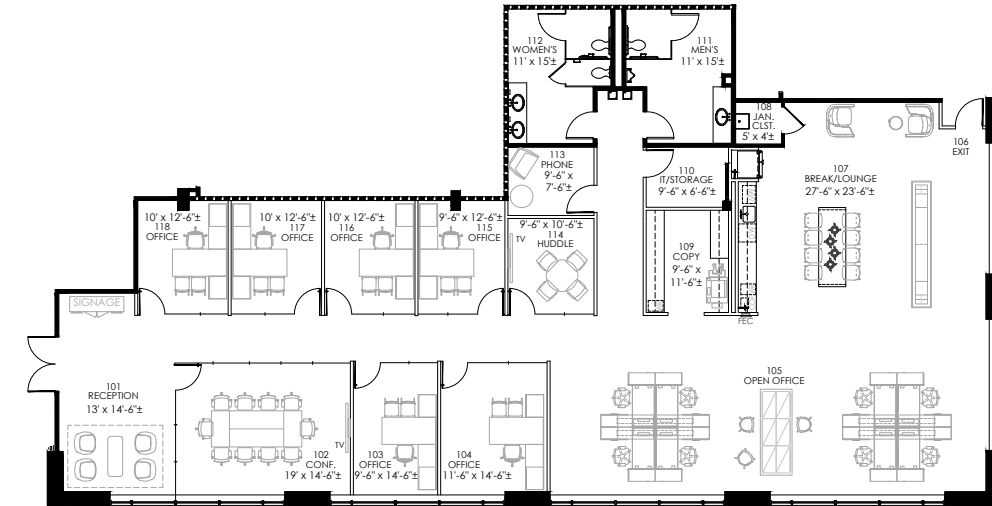
- 45,732 RSF
- 2 Floors
- 7,393 SF available
- Top of Building signage available
- Surface parking: 6/1,000 SF
- Covered parking available
- Full building opportunity



## FLOOR PLAN

### CARDINAL PARK 7 – SUITE 150

7,393 RSF





## CARDINAL PARK 8

1703 N Plano Rd

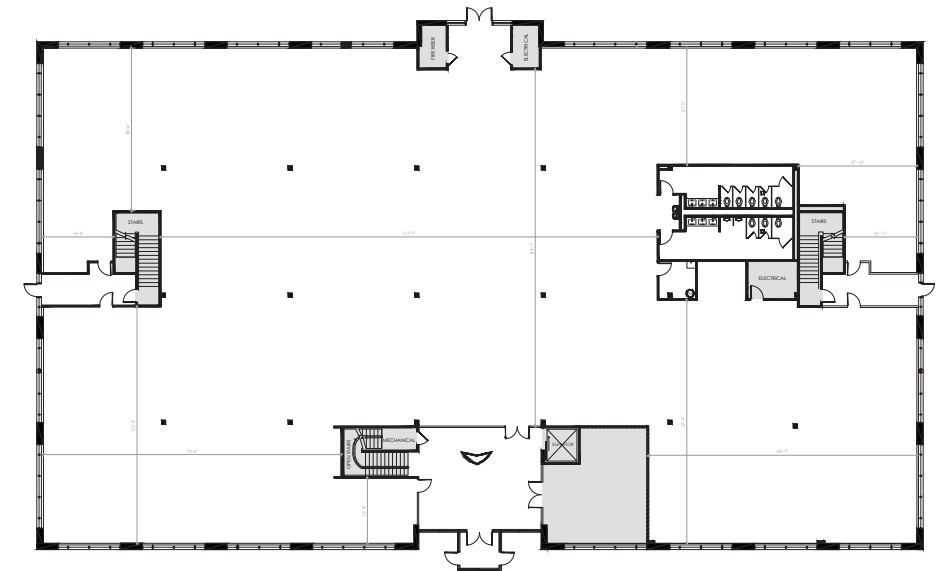
- 48,312 RSF
- 2 Floors
- 24,156 SF efficient floor plates
- Top of building signage available
- Surface parking: 6/1,000 SF
- Covered parking available



## FLOOR PLAN

### CARDINAL PARK 8 - 1ST FLOOR

23,490 RSF



# CARDINAL

## —PARK—



### OWNERSHIP

EQT Exeter is among the largest real estate investment managers in the world, focused on acquiring, developing and managing office, logistics/industrial, life science and residential properties. EQT Exeter applies a thematic investment philosophy and value-creation approach.



### LEASING

**CHUCK SELLERS**

214.697.4430

[csellers@forgecommercial.com](mailto:csellers@forgecommercial.com)

**TAYLOR LYNCH**

972.834.3339

[tlynch@forgecommercial.com](mailto:tlynch@forgecommercial.com)

**DANIEL DEWEESE**

214.870.5834

[ddeweese@forgecommercial.com](mailto:ddeweese@forgecommercial.com)