



Bristol Newport Medical Plaza

1202 Bristol St | Costa Mesa, CA 92626

Medical Office Condos NOW FOR SALE



Purchase Options:
from 7,015 SF (Full Floor)
to 3,860 SF or 3,155 SF

Aaron Phillips

First Vice President
License No. 01769480
+ 1 949 724 5562
aaron.phillips@colliers.com



Colliers

3 Park Plaza, Suite 1200
Irvine, CA 92614
+1 949 724 5500

Bristol Newport Medical Plaza

Costa Mesa, CA



Quick Facts

Within 5 Miles



506,548
residents



\$104,992
average income



30%
50+ years of age



31.1
average age

Demographics Information

Overview	1-Mile Radius	3-Mile Radius	5-Mile Radius
Population (2023)	14,762	170,930	506,548
Population by Age (50+)	29%	29%	30%
Median Age (2023)	36.4	34.8	35.1
Average Household Income (2028)	\$100,219	\$102,084	\$104,992



Building Features:

- Class A 100% Medical Office Building
- Modern 2007 Building Construction
- Elevator Serviced
- Signage Opportunity

Building Amenities:



Free
Surface Parking



Building Identify
for Full Floor User



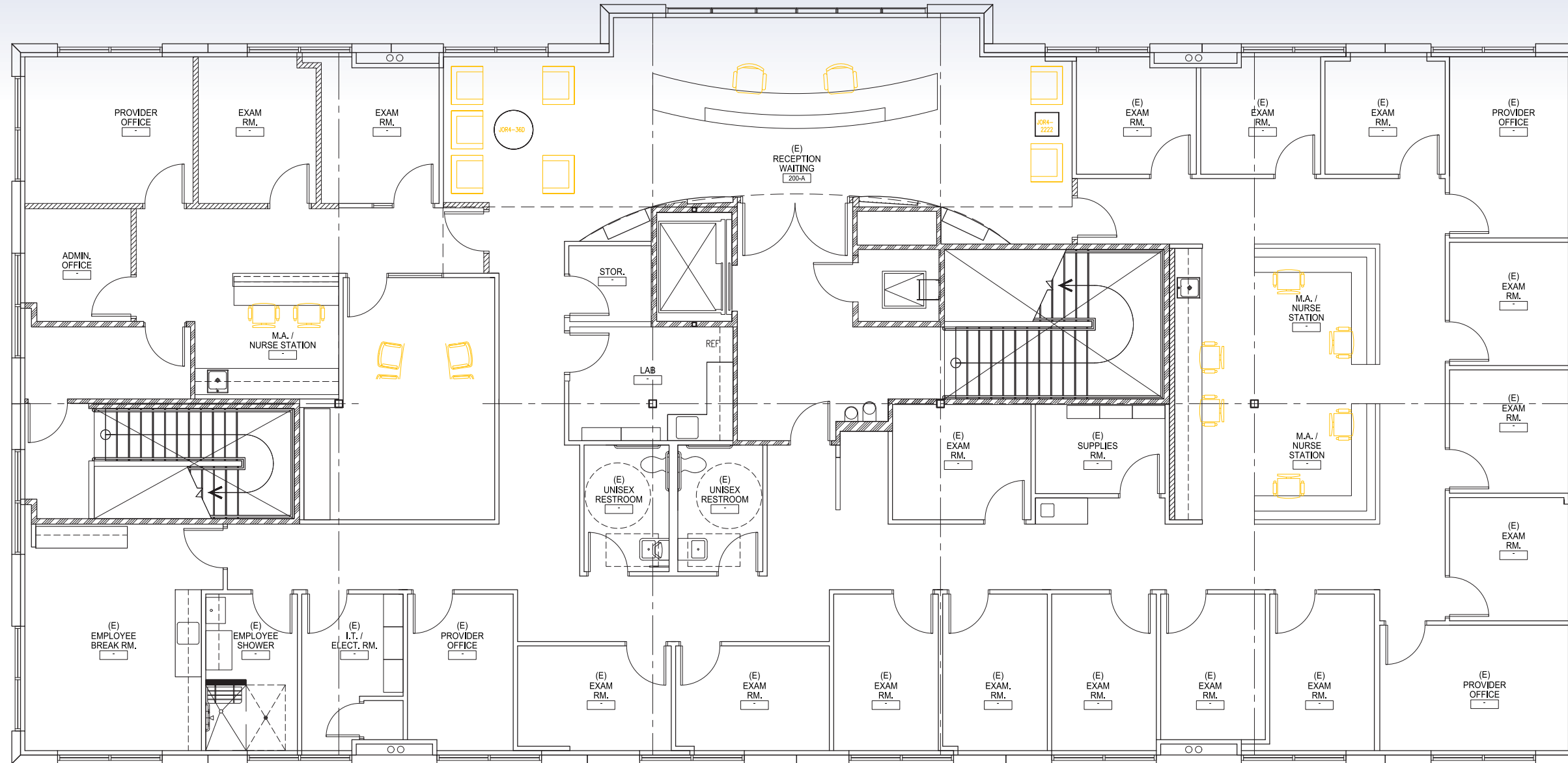
Easy
Accessibility



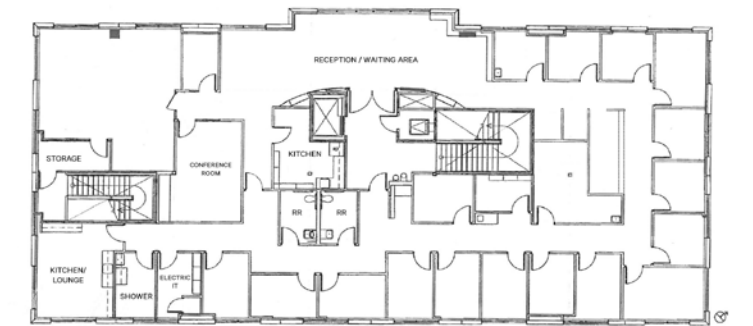
Floor Plan

Entire floor | Pricing \$6,675,000

7,015 SF



As Built Condition





For more information or to schedule a property tour, please contact:

Aaron Phillips

First Vice President

License No. 01769480

+ 1 949 724 5562

aaron.phillips@colliers.com



Colliers

3 Park Plaza, Suite 1200

Irvine, CA 92614

+1 949 724 5500