

Manufacturing Facility

4603 West 2100 South
West Valley City, Utah 84120

PROPERTY FEATURES

- + Building Size: 29,711 Sq. Ft.
 - Main Level Office: ±3,021 Sq. Ft.
 - Mezzanine Level: ±2,482 Sq. Ft.
- + Lot Size: 3.05 Acres
- + Clear Height: 40'
- + Loading:
 - One (8' x 8') Dock High Door
 - One (12' x 12') Drive In Door
 - One (14' x 14') Drive In Door
 - One (13' x 30') Drive In Door
- + 20 Ton Crane (33' Hook Height)
- + Power: 2,000 Amp, 480 Volt, 3 Phase
- + Zoned: M-1, Light Industrial
- + APN: 15-19-126-010
- + Fully Fenced & Secured Yard
- + Well Located in West Valley City with Convenient Access to Bangerter Highway, 201 Highway, Mountain View Corridor, and I-80



Contact Us

Chris Liddell

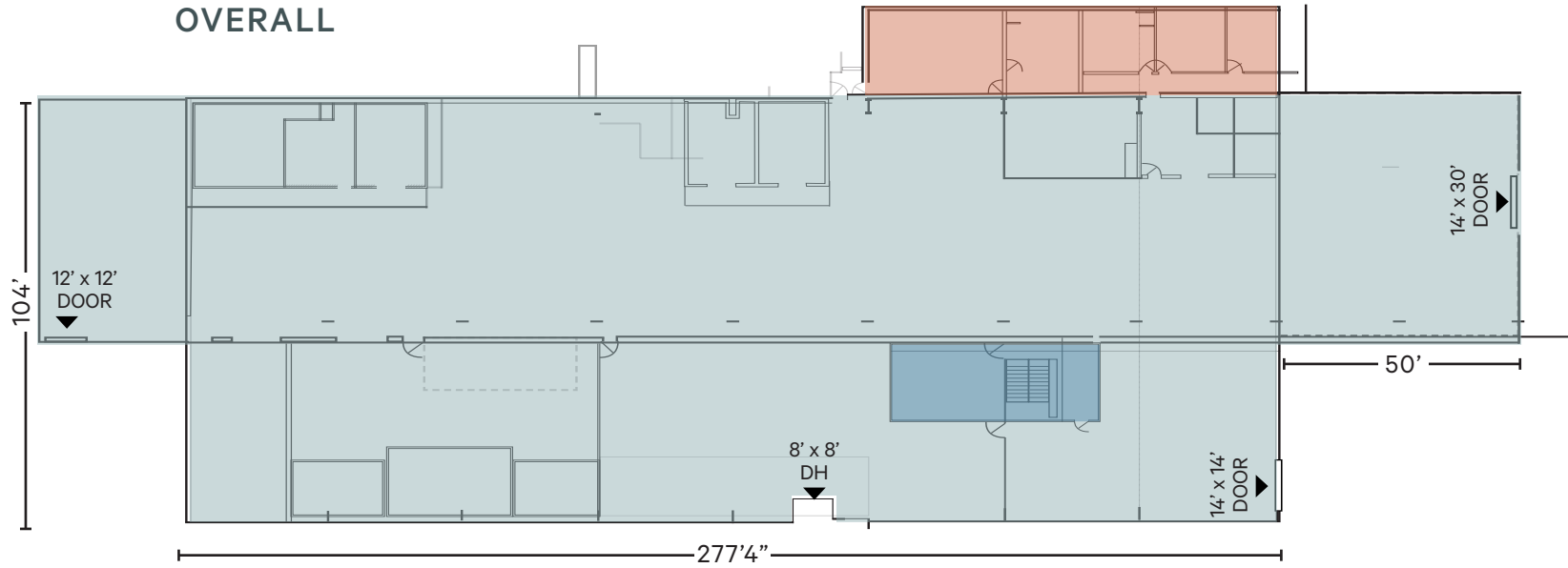
Senior Vice President
+1 801 869 8007
chris.liddell@cbre.com

Matt McAfee

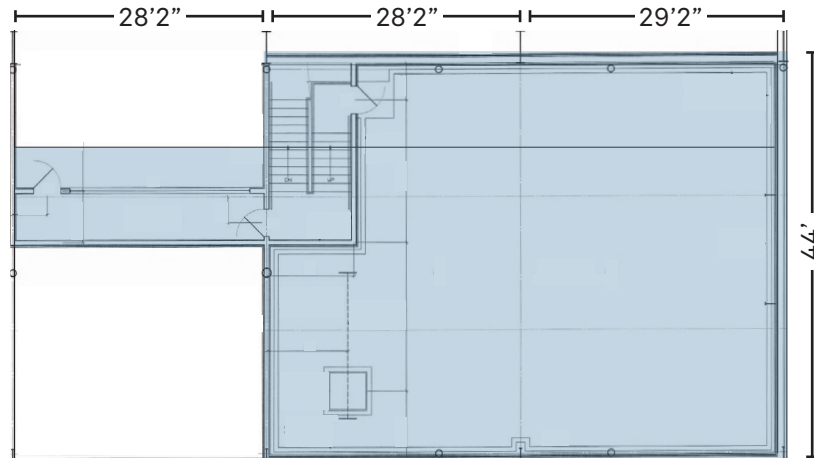
Senior Vice President
+1 801 869 8023
matt.mcafee@cbre.com

FLOOR PLAN

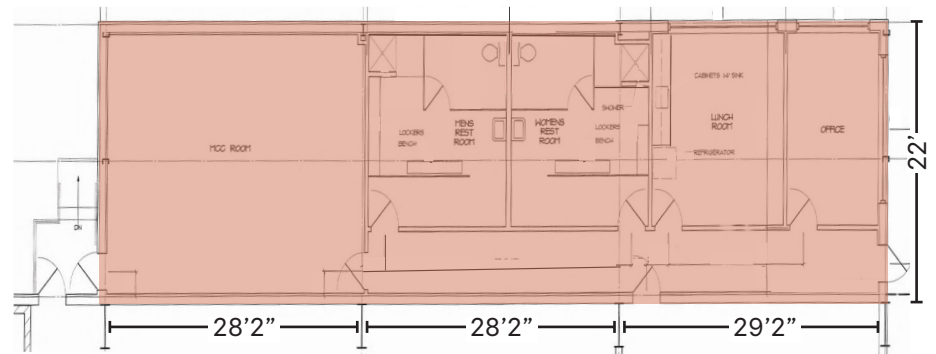
OVERALL



MEZZANINE LEVEL



OFFICE



Manufacturing Building

4603 West 2100 South | West Valley City, Utah 84120

For Sale

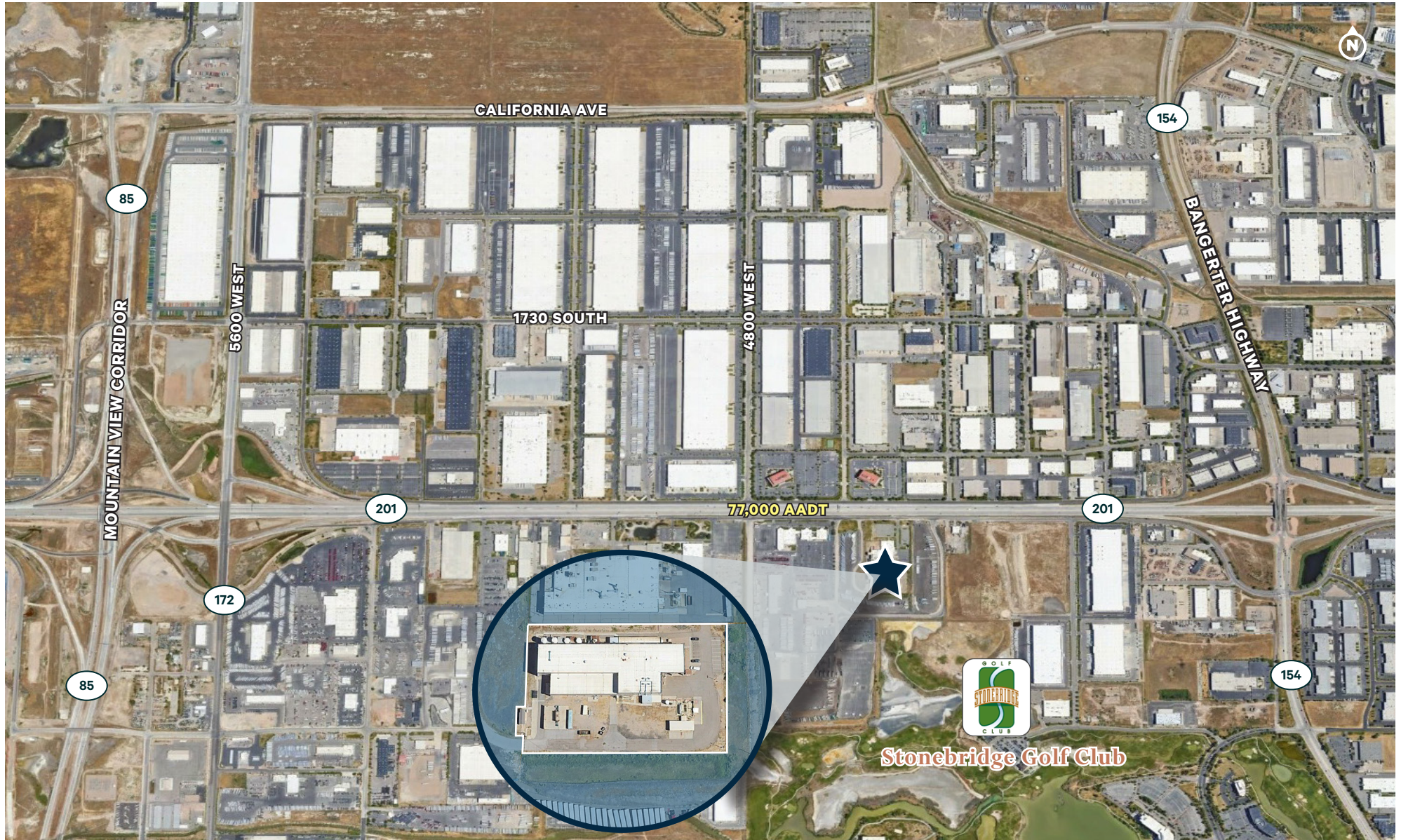
PHOTOS



Manufacturing Building

4603 West 2100 South | West Valley City, Utah 84120

For Sale



© 2024 CBRE, Inc. All rights reserved. This information has been obtained from sources believed reliable but has not been verified for accuracy or completeness. CBRE, Inc. makes no guarantee, representation or warranty and accepts no responsibility or liability as to the accuracy, completeness, or reliability of the information contained herein. You should conduct a careful, independent investigation of the property and verify all information. Any reliance on this information is solely at your own risk.