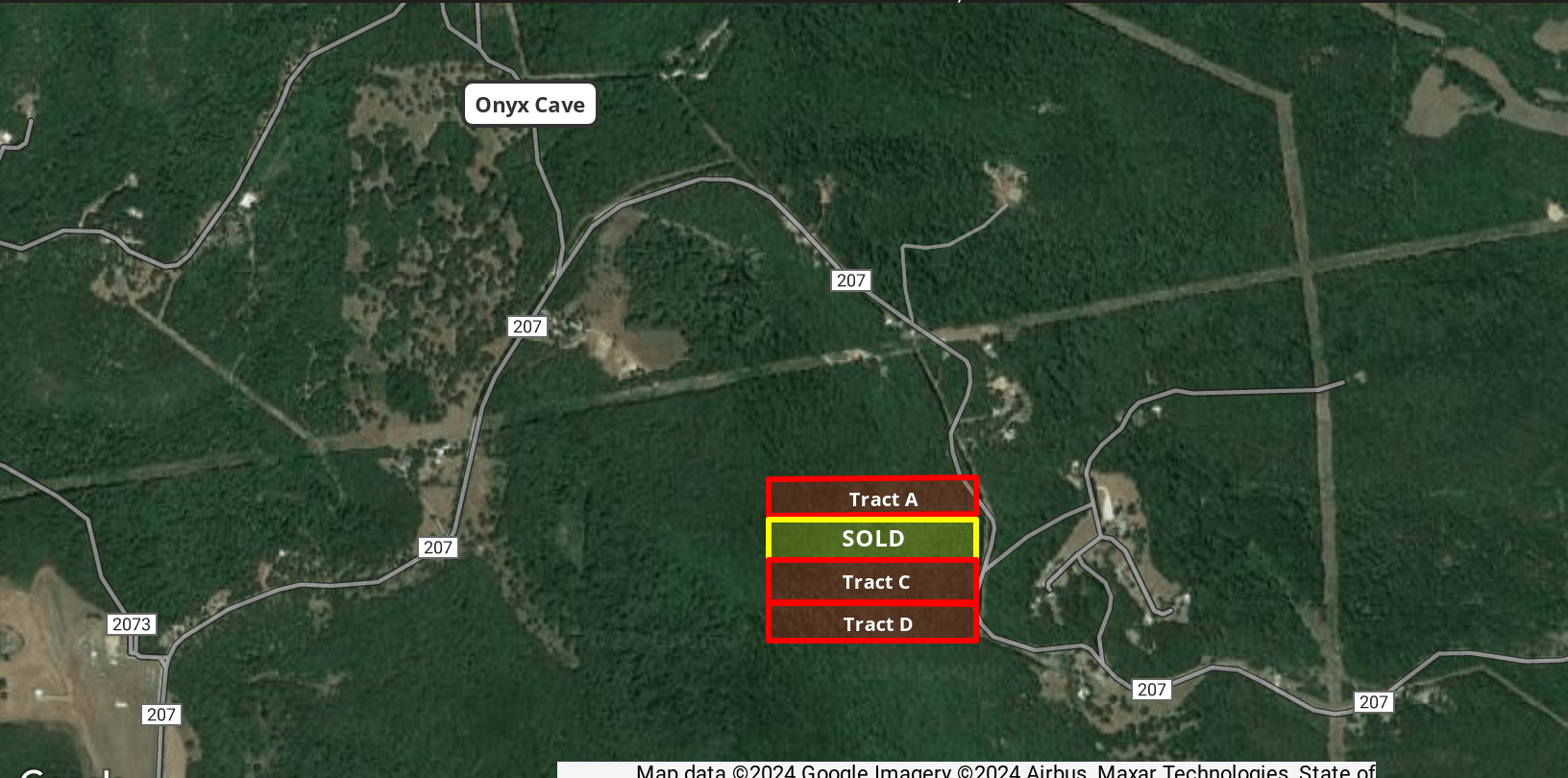




FINEBERG & ASSOCIATES
COMMERCIAL REAL ESTATE

104 S Main Street Bentonville, AR 72712

ARKREALESTATE.COM



Map data ©2024 Google Imagery ©2024 Airbus. Maxar Technologies. State of

TRACTS A-D CR 207 - EUREKA SPRINGS, AR

OFFERING SUMMARY

Tract A:	10.33 AC \$79,000
Tract B:	Sold
Tract C:	10.44 AC \$79,000
Tract D:	10.10 AC \$79,000

PROPERTY HIGHLIGHTS

- Secluded tracts of land with exceptional views along a paved road
- Electric at street, well/septic needed
- Boundary survey & covenants available upon request
- Over 600 acres of land for sale surrounding these tracts

PROPERTY OVERVIEW

Choice tracts of land within the newly platted Pine Creek Subdivision! 15 minutes from Downtown Eureka Springs, and within an hour from Northwest Arkansas & Branson, MO.



BRENNAN SHARPE
(479)530-3774
brennan@arkrealestate.com

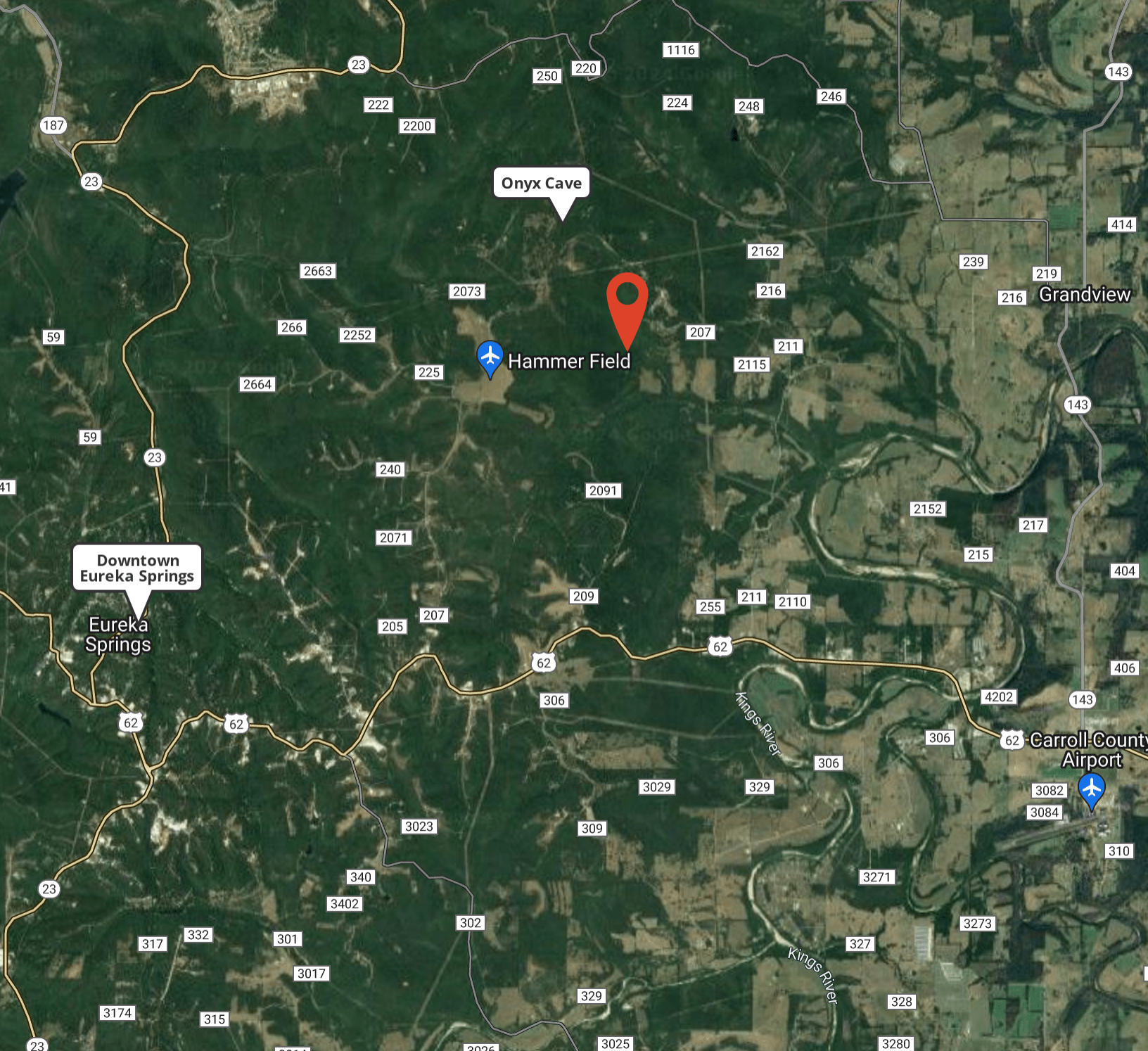




FINEBERG & ASSOCIATES
 COMMERCIAL REAL ESTATE
 104 S Main Street Bentonville, AR 72712



ARKREALSTATE.COM



Map data ©2024 Imagery ©2024 Airbus, Arkansas GIS, Benton County, CNES / Airbus, Landsat / Copernicus, Maxar Technologies, State of Arkansas, USDA/FPAC/GEO, Washington County

BRENNAN SHARPE
 (479)530-3774
 brennan@arkrealestate.com



FOR MORE INFORMATION ON THIS PROPERTY OR TO SEE OUR OTHER PROPERTIES VISIT ARKREALSTATE.COM