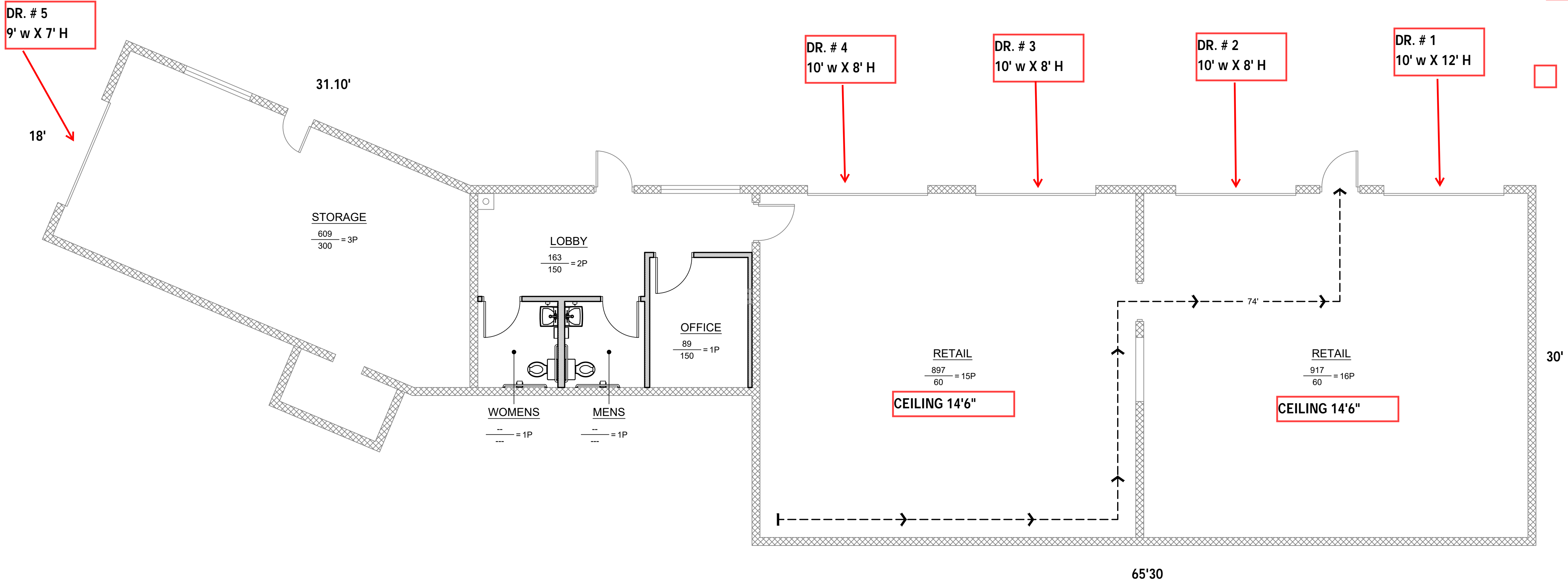


2401 NW VIVION RD.
Riverside MO. 64151

TOTAL S.F. 2916



CODE DATA

1. USE GROUP CLASSIFICATION:	M - MERCANTILE
2. CONSTRUCTION TYPE:	TYPE V-B (NON-SPRINKLERED)
3. BUILDING AREA:	
RETAIL	1,814 SF
OFFICE/LOBBY/RR	348 SF
STORAGE	699 SF
TOTAL BUILDING AREA	2,771 SF
4. OCCUPANCY LOAD:	
RETAIL (60 SF/OCC)	31 OCC
OFFICE LOBBY (150 SF/OCC)	3 OCC
STORAGE (300 SF/OCC)	3 OCC
RESTROOMS	2 OCC
TOTAL	39 OCC
5. EXITS:	
A. DOORS:	
REQUIRED	39 OCC x 0.2" = 7.8"
PROVIDED	100"
B. NUMBER OF EXITS:	
REQUIRED	1
PROVIDED	3
C. TRAVEL DISTANCE	
ALLOWABLE	200' MAX
PROVIDED	74' MAX
D. MAX. DEAD END CORRIDOR DISTANCE	20'-0"
E. MIN. CORRIDOR WIDTH	44"
F. MIN. DOOR WIDTH	32" CLEAR

LEGEND

- ROOM OCCUPANCY LOAD
- AREA
- 875 / 20 = 43P - OCCUPANCY LOAD (P = PERSONS)
- SF / OCCUPANT



OCCUPANCY PLAN
2401 NW Vivion Rd
Riverside, MO 64151

Allison Alexander
3403 NW Vivion Rd
Riverside, MO 64150

#	BY	DATE	SOURCE

DATE: 12.09.22
DESIGNED BY:
DRAWN BY: JDE
APPROVED BY: XXX

SHEET NUMBER
A-101
JOB NUMBER
5897-22

