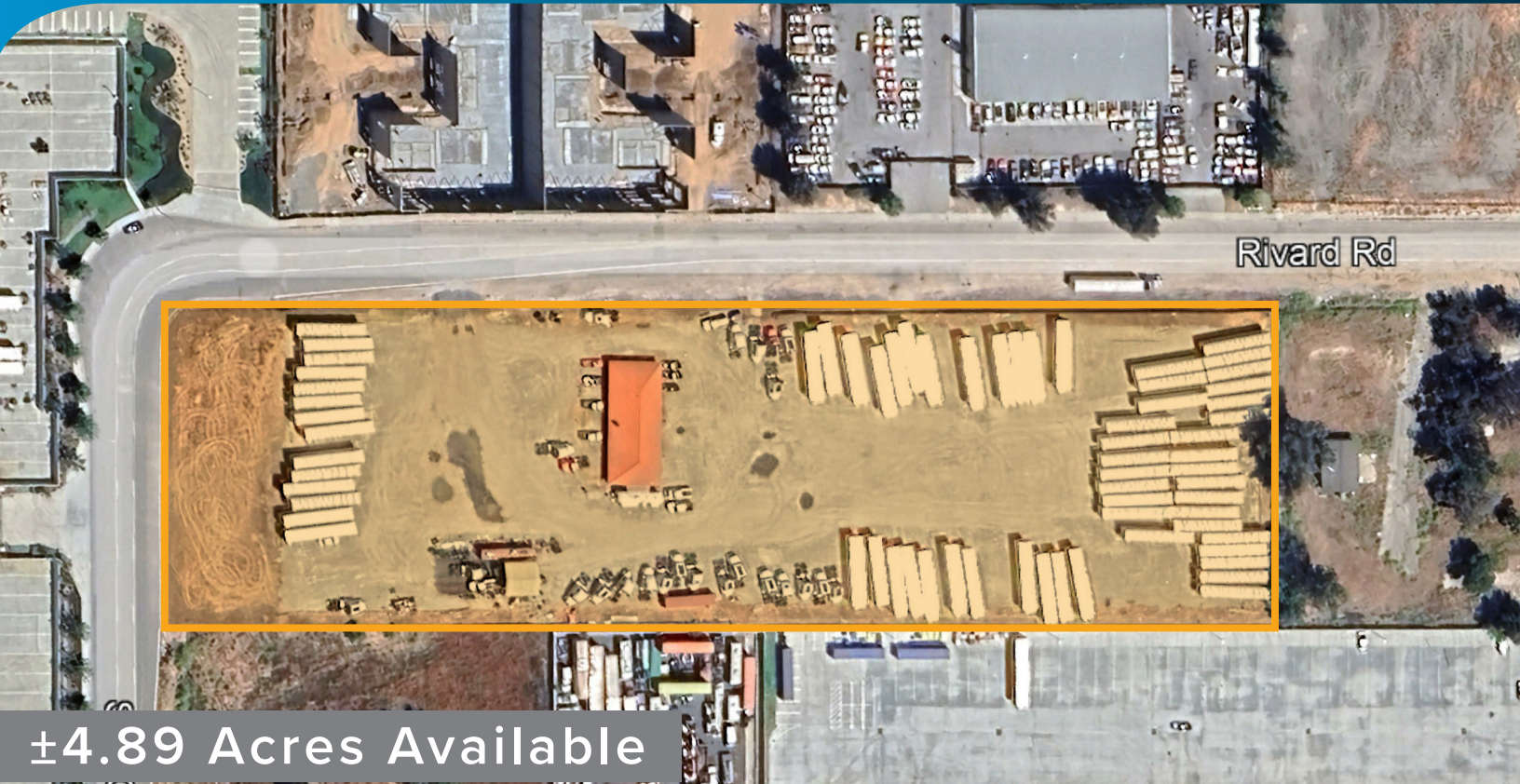


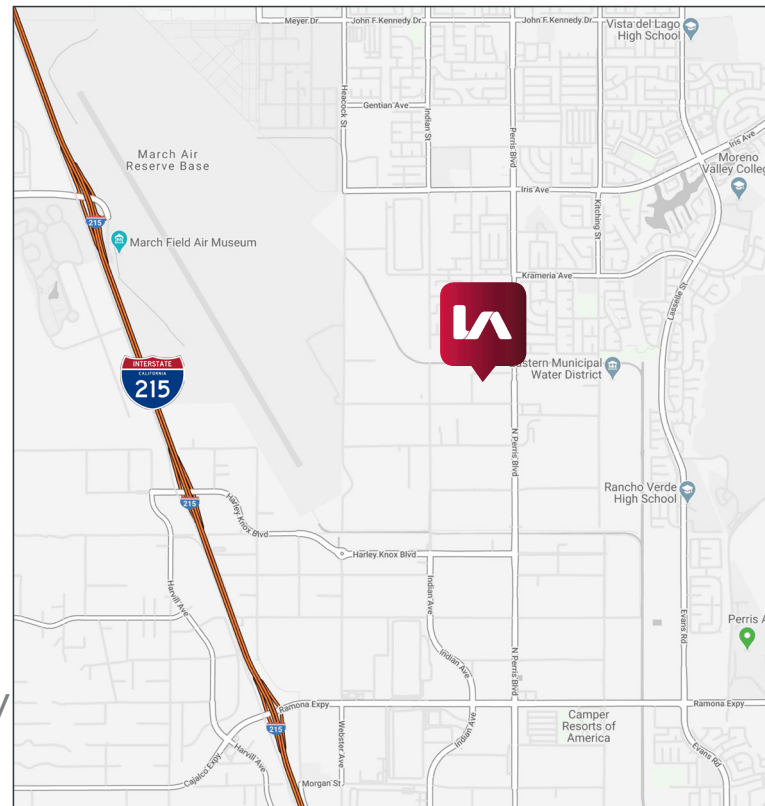
# 24811 RIVARD RD., MORENO VALLEY, CA 92551

## Approved Truck Yard with Office on ±4.89 Acres



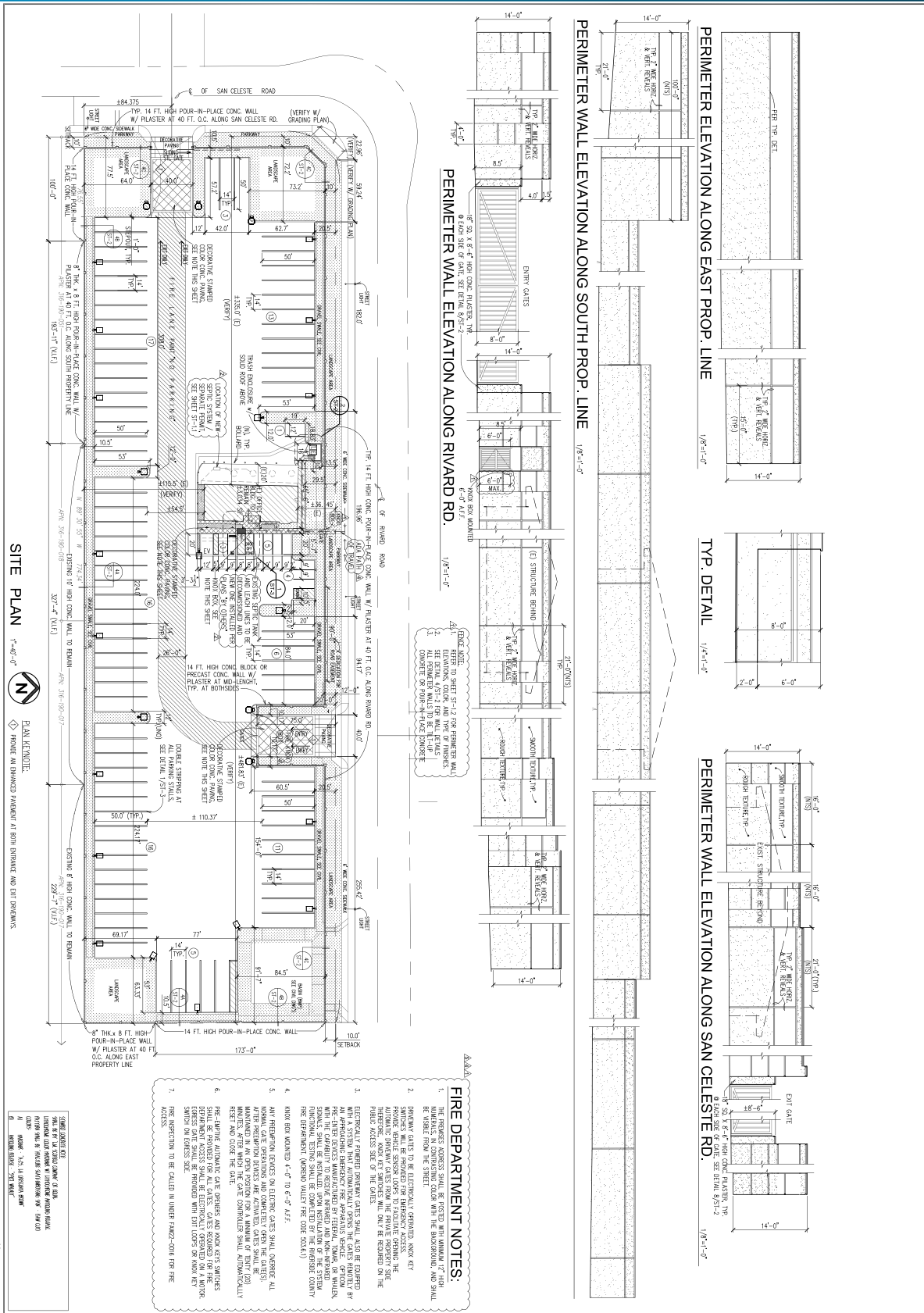
### LISTING DATA

- ±2,473 SF of Existing Office
- Approved CUP for Truck Trailer Storage
- Industrial / Business Park Zoning
- Ready to Complete (Approved Grading Permit) and Fully Entitled
- Next to Future Fire Station
- Excellent Location Near I-215 Freeway
- Located in the heart of the Moreno Valley warehouse area



**John Mulrooney**  
Senior Vice President/Principal  
jmulrooney@lee-assoc.com  
D 909.373.2928  
DRE #00839176

**Lee & Associates® - Ontario**  
3535 Inland Empire Blvd.,  
Ontario, CA 91764  
909.989.7771 • lee-assoc.com • Corp ID 00976995



**John Mulrooney**  
 Senior Vice President/Principal  
 jmulrooney@lee-assoc.com  
 D 909.373.2928  
 DRE #00839176

**Lee & Associates® - Ontario**  
 3535 Inland Empire Blvd.,  
 Ontario, CA 91764  
 909.989.7771 • lee-assoc.com • Corp ID 00976995



# 24811 RIVARD RD., MORENO VALLEY, CA 92551

## Approved Truck Yard with Office on ±4.89 Acres



**John Mulrooney**  
Senior Vice President/Principal  
jmulrooney@lee-assoc.com  
D 909.373.2928  
DRE #00839176

**Lee & Associates® - Ontario**  
3535 Inland Empire Blvd.,  
Ontario, CA 91764  
909.989.7771 • lee-assoc.com • Corp ID 00976995