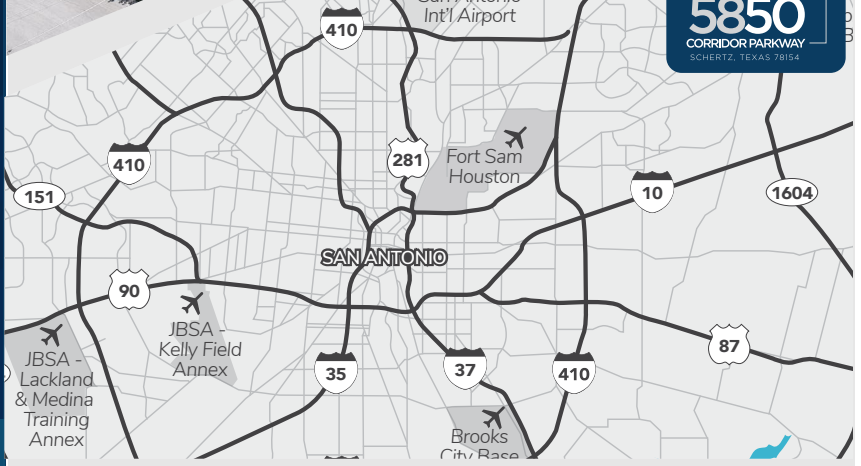


# 5850

## CORRIDOR PARKWAY

SCHERTZ, TEXAS 78154

## 41,000 SF Standalone Industrial Distribution Building Available For Lease



## Highlights

5850 Corridor Parkway is a 41,000 square foot warehouse/distribution building located in Tri-County Business Park.

- 41,000 SF Available w/ 60+ parking spaces
- ESRF sprinklered
- LED Lighting
- 3 Phase-480v-1100 Amp Power
- ± 6,838 square feet office space
- 7 dock doors with ability to expand
- 1 grade-level door with ability to expand
- 1 ramp
- 24' clear height
- Zoning: GB Zoning
- Available Now
- Call broker for pricing

  
**STREAM**

# 5850

## CORRIDOR PARKWAY

SCHERTZ, TEXAS 78154

### 41,000 SF Standalone Industrial Distribution Building Available For Lease



### Drive Times

IH-35:	Immediate
Loop 1604:	5 Minutes
Loop 410:	10 Minutes
IH-10:	15 Minutes



# 5850

CORRIDOR PARKWAY

SCHERTZ, TEXAS 78154

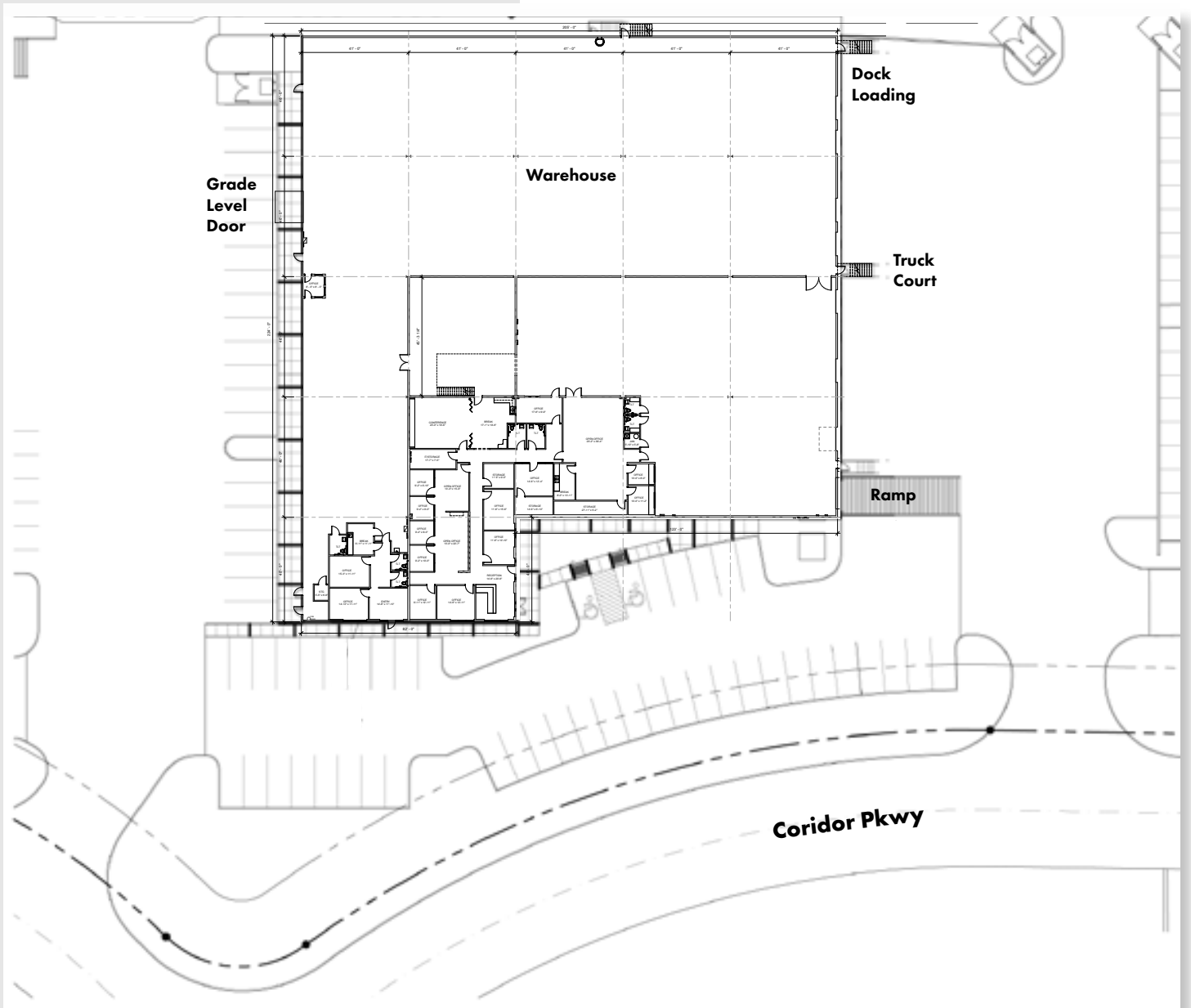
**41,000 SF Standalone  
Industrial Distribution Building  
Available For Lease**

## Floorplan

- 41,000 SF Available
- 60+ Parking Spaces
- ± 6,838 SF Office Space



**Download Floorplan**



# 5850

## CORRIDOR PARKWAY

SCHERTZ, TEXAS 78154



**STREAM**

Andrew Katzfey - 210.298.8537  
andrew.katzfey@streamrealty.com

Kevin Cosgrove - 210.298.8527  
kevin.cosgrove@streamrealty.com