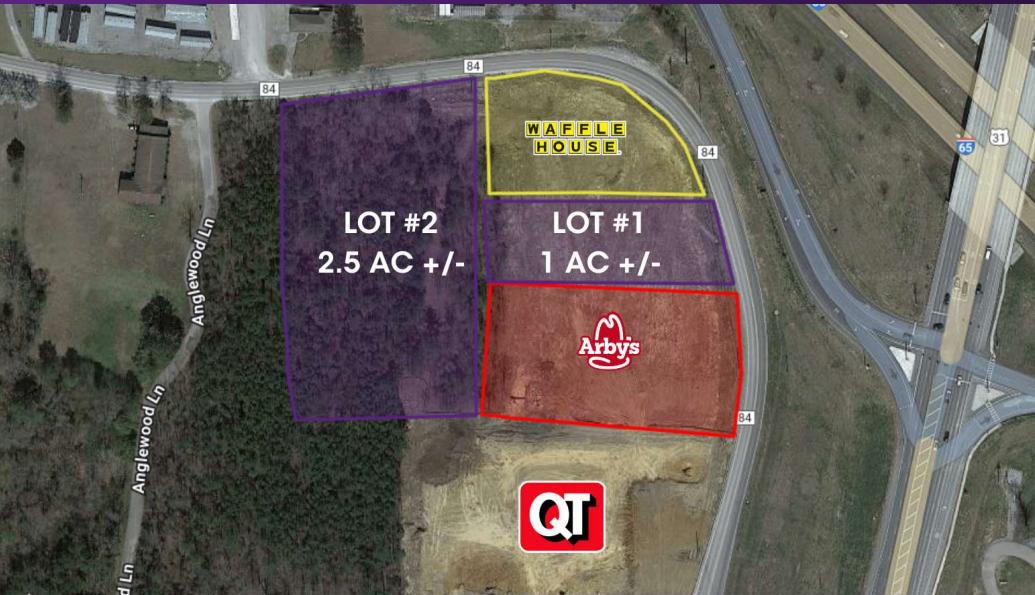


CALERA - LAND FOR SALE

1996 COUNTY ROAD 84, CALERA, AL 35040



PROPERTY HIGHLIGHTS

- 2 commercial lots for sale, offering an excellent opportunity to develop along busy I-65 corridor
- Lot 1: ~1 acre between Arby's and Waffle House—ideal for retail or service with high visibility.
- Lot 2: ~2.5 acres at the rear—perfect for a hotel site
- Located off I-65 Exit 321 (Highway 31), a high-traffic area popular with beach travelers.
- Near Quick Trip and other major establishments, ensuring a steady flow of potential customers.

SPACES	LOT SIZE	PRICE
Lot 1	+/- 1 Acre	\$18.00/sf
Lot 2	+/- 2.5 Acres	\$13.75/sf

Tyler Bradford
Andrew Collat

Director
Associate Broker

205.271.7223
205.271.7224

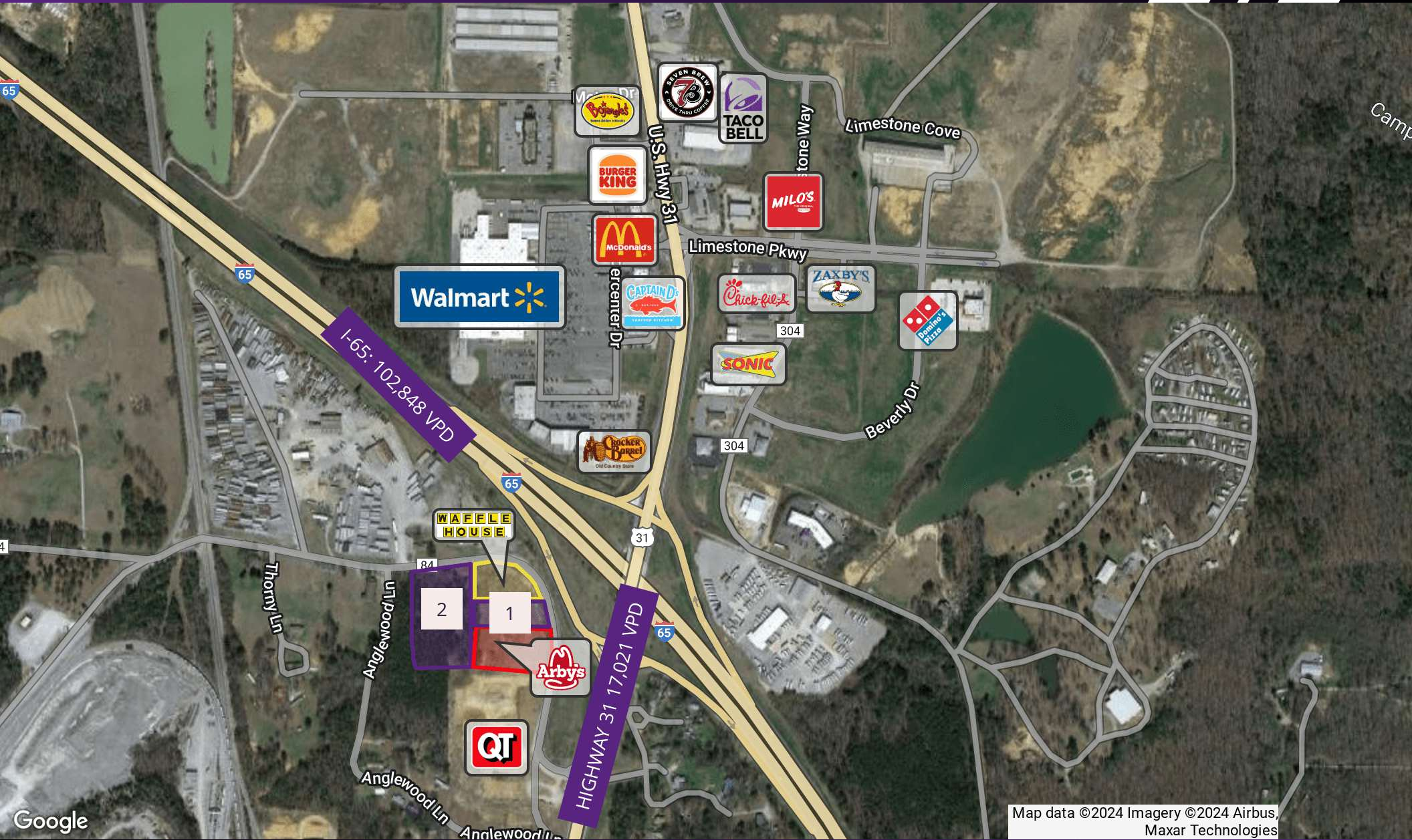
tbradford@southpace.com
acollat@southpace.com

All information furnished with respect to the subject matter has been obtained from sources deemed reliable. No representation or warranty as to accuracy thereof is made and such information is submitted subject to change in price, omissions, errors, prior sale or withdrawal without notice.



CALERA - LAND FOR SALE

1996 COUNTY ROAD 84, CALERA, AL 35040



Tyler Bradford
Andrew Collat

Director
Associate Broker

205.271.7223
205.271.7224

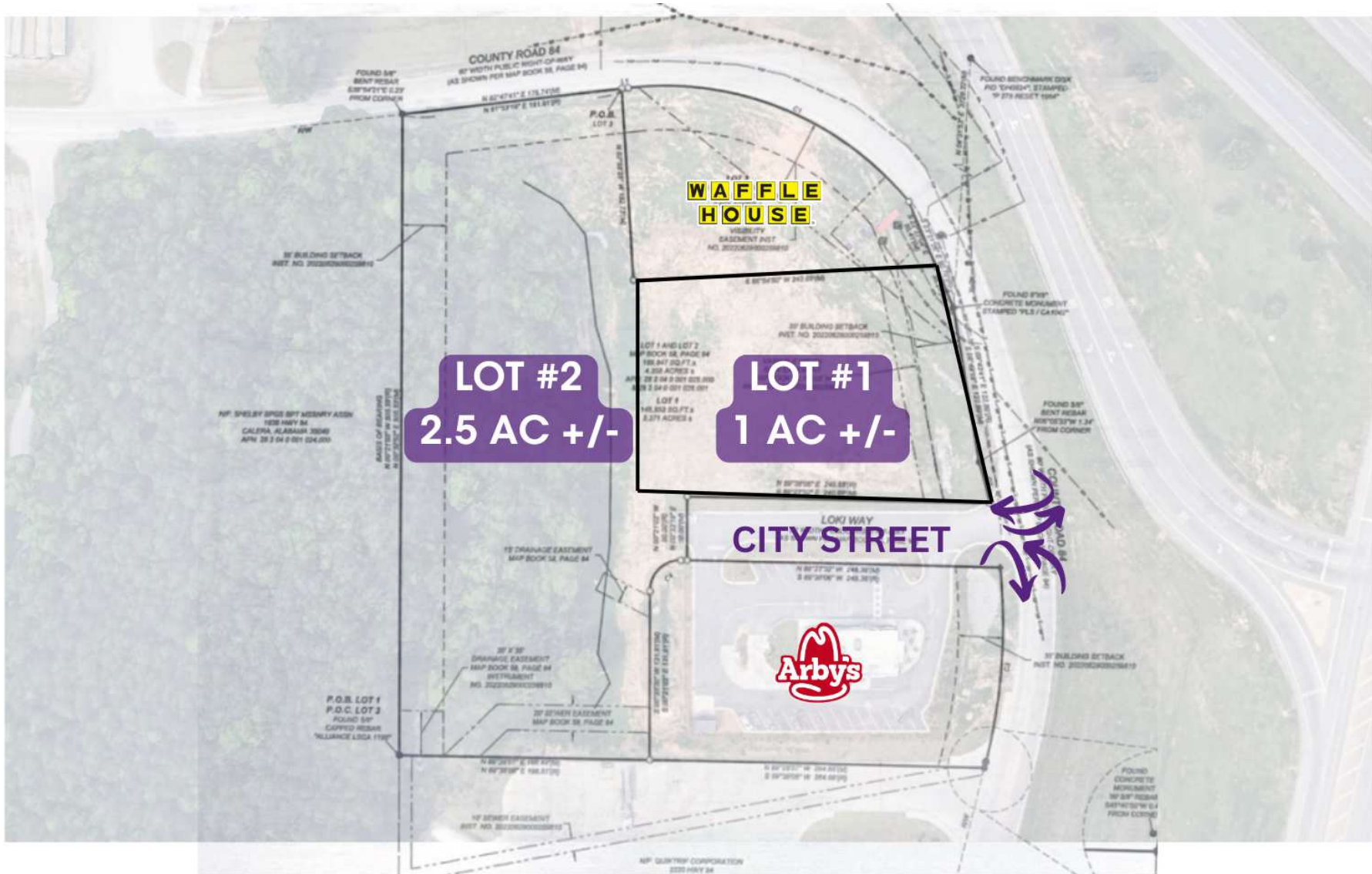
tbradford@southpace.com
acollat@southpace.com

All information furnished with respect to the subject matter has been obtained from sources deemed reliable. No representation or warranty as to accuracy thereof is made and such information is submitted subject to change in price, omissions, errors, prior sale or withdrawal without notice.



CALERA - LAND FOR SALE

1996 COUNTY ROAD 84, CALERA, AL 35040



Tyler Bradford
Andrew Collat

Director
Associate Broker

205.271.7223
205.271.7224

tbradford@southpace.com
acollat@southpace.com

All information furnished with respect to the subject matter has been obtained from sources deemed reliable. No representation or warranty as to accuracy thereof is made and such information is submitted subject to change in price, omissions, errors, prior sale or withdrawal without notice.

