

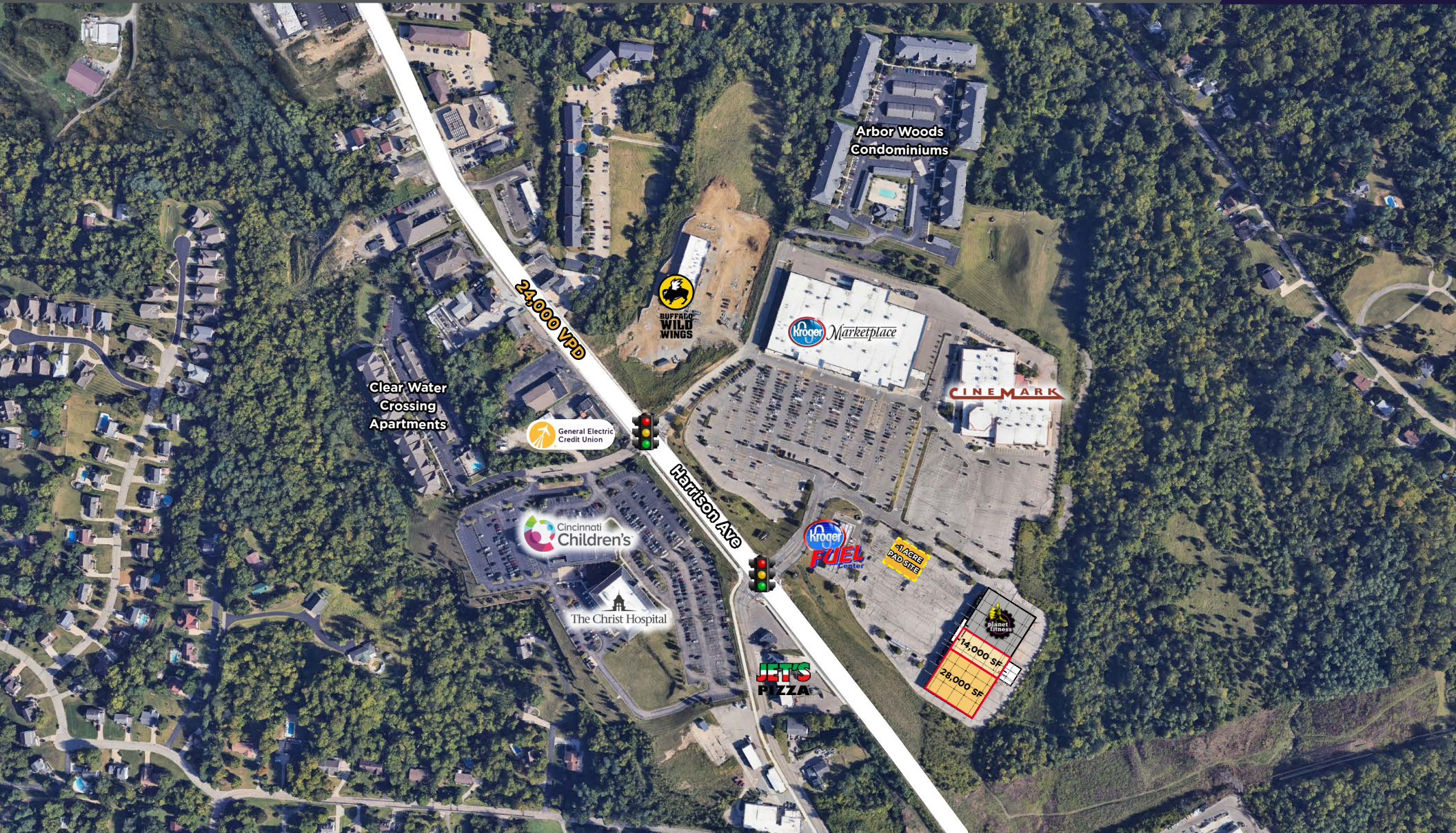
# 5878 HARRISON AVE

CINCINNATI, OH 45248



For Lease / Jr. Box Space, Pad Site

WE ARE  
THE CENTER  
OF RETAIL





# 5878 HARRISON AVE

CINCINNATI, OH 45248

## RETAIL SPACE

12,000 - 45,000 SF  
~1 Acre Pad Site

## RENT

Call Broker For Details

## NEIGHBORING TENANTS

Kroger Marketplace, Cinemark Theatres, Cincinnati Children's Hospital, The Christ Hospital, Tractor Supply, Furniture Fair, Gabe's and much more

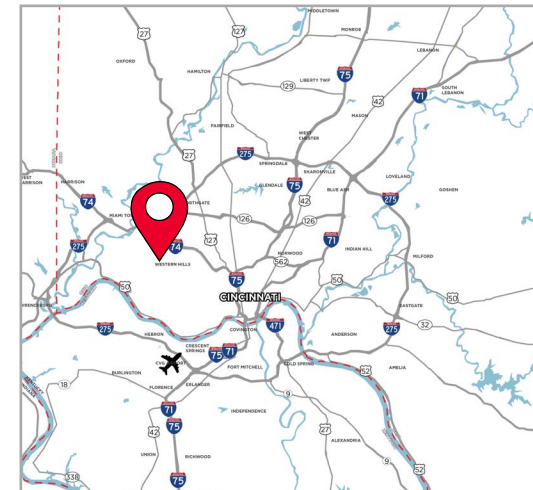
## COMMENTS

- 12,000 - 45,000 SF In-line & End-cap retail space in former Kroger box
- Anchored by Planet Fitness
- Located next to Kroger Marketplace and Cinemark Theatres
- **Kroger:** 2.3M visits annually (Top 1% of Kroger Nationally)
- (2) Stoplight access points from Harrison Ave
- Strong demographics in growing trade area

## NEIGHBORHOOD DEMOGRAPHICS



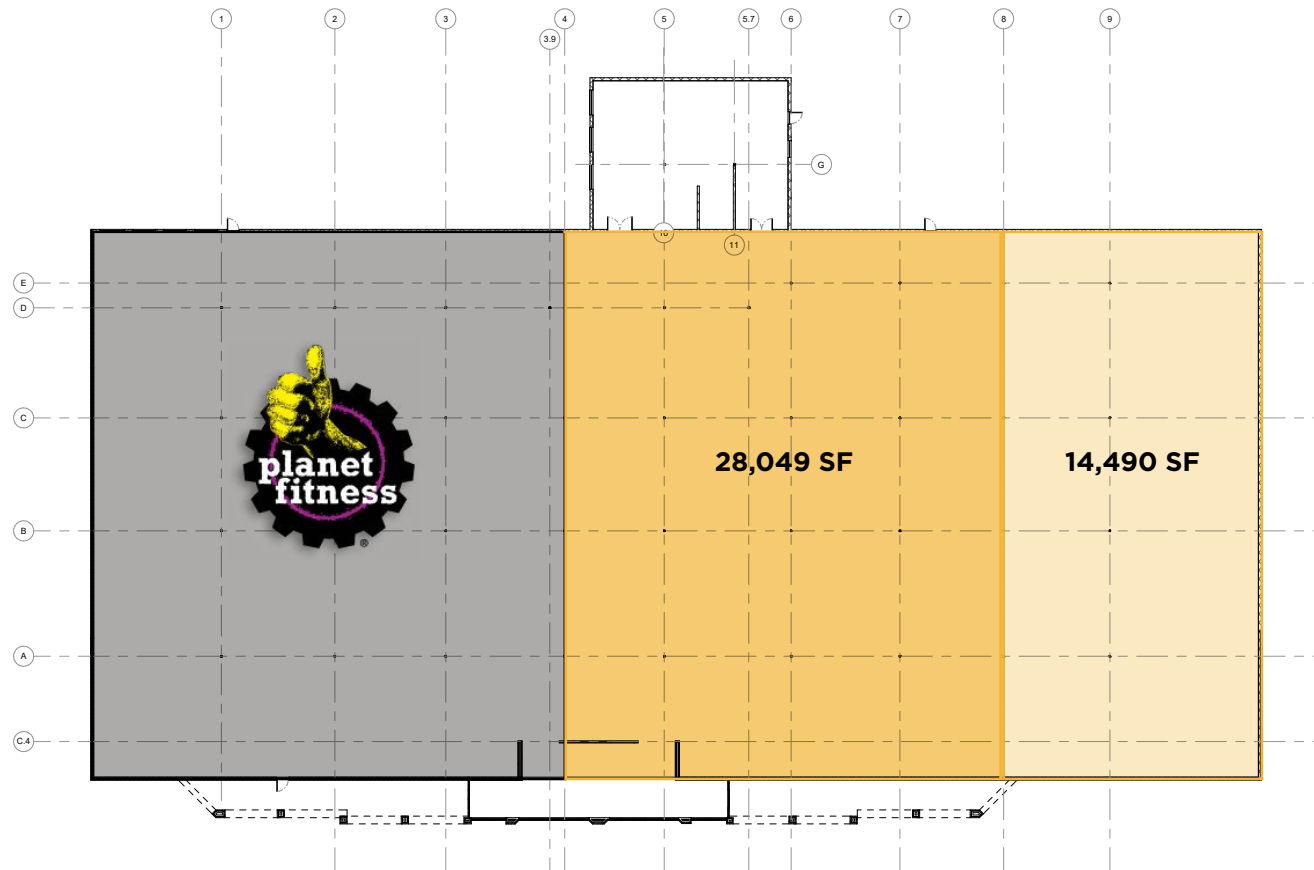
|         |         |           |        |
|---------|---------|-----------|--------|
| 1 Mile  | 5,469   | \$124,762 | 2,913  |
| 3 Miles | 67,656  | \$105,380 | 32,839 |
| 5 Miles | 181,652 | \$100,158 | 84,761 |



# 5878 HARRISON AVE

CINCINNATI, OH 45248

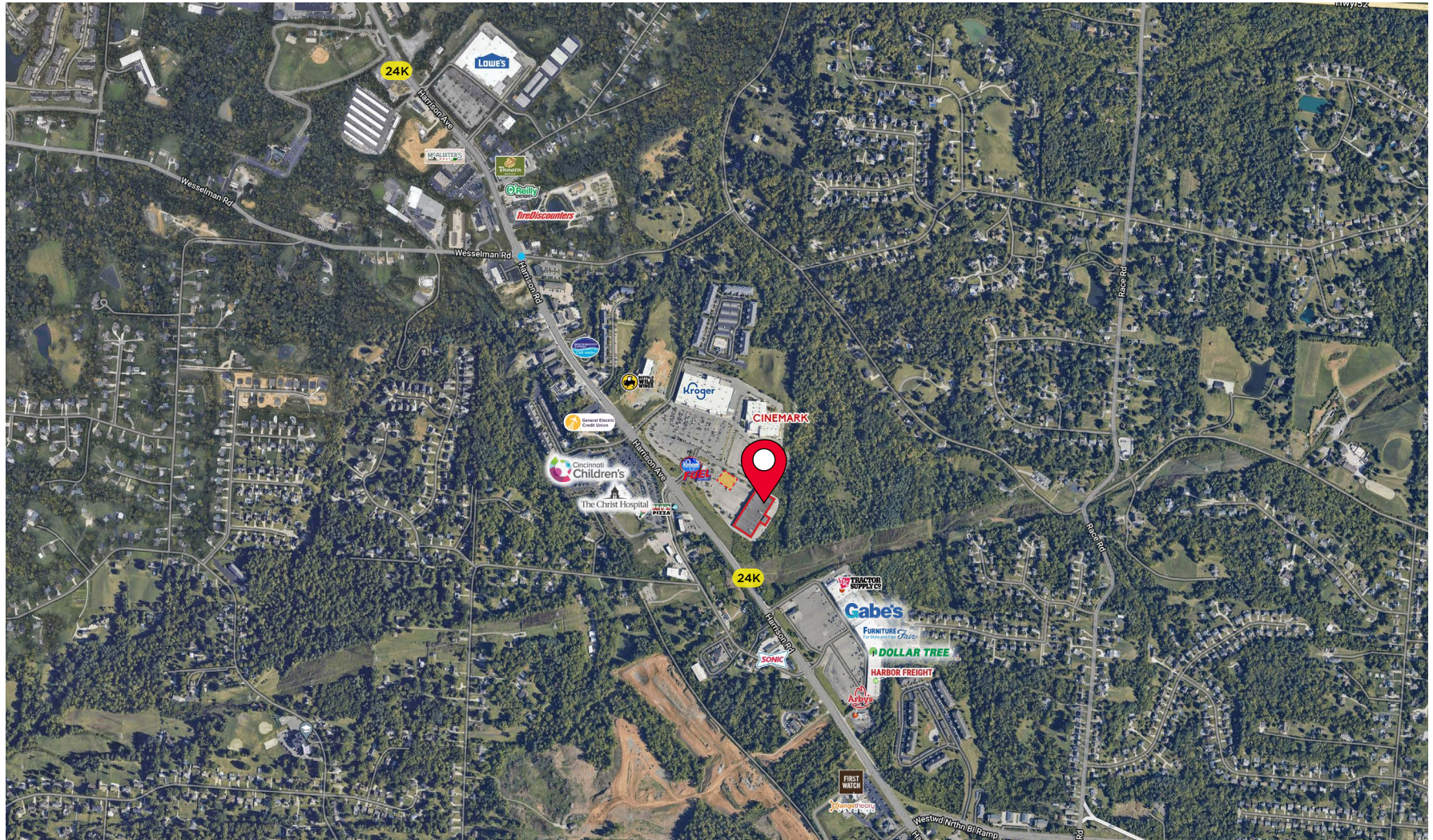
## SAMPLE SPACE SPLIT





# 5878 HARRISON AVE

CINCINNATI, OH 45248



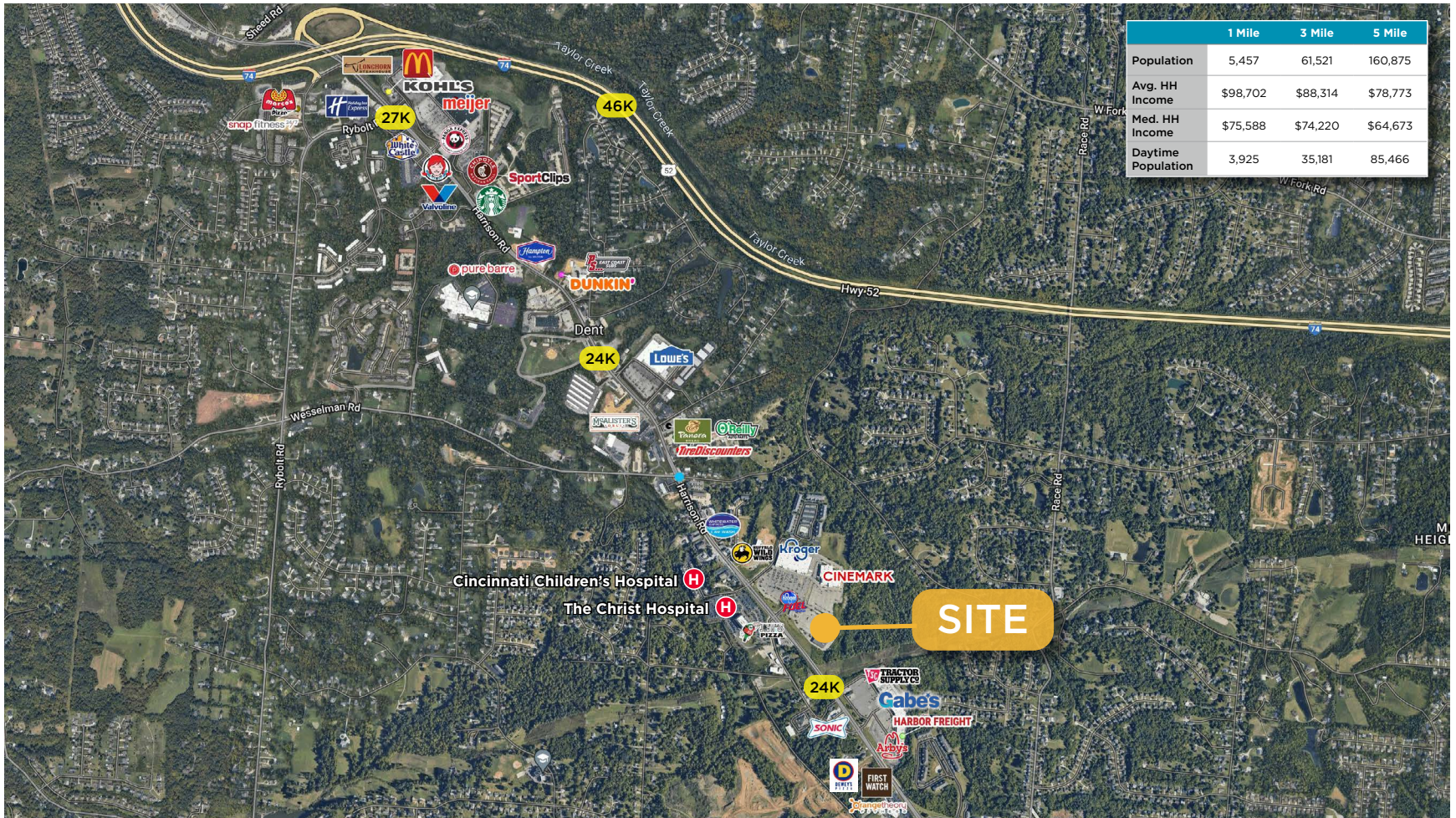
**Andrew Sellet** / Managing Director / [andrew.sellet@cushwake.com](mailto:andrew.sellet@cushwake.com) / +1 513 763 3053  
**Terry Ohnmeis** / Senior Director / [terry.ohnmeis@cushwake.com](mailto:terry.ohnmeis@cushwake.com) / +1 513 763 3059

Cushman & Wakefield Copyright 2024. No warranty or representation, express or implied, is made to the accuracy or completeness of the information contained herein, and same is submitted subject to errors, omissions, change of price, rental or other conditions, withdrawal without notice, and to any special listing conditions imposed by the property owner(s). As applicable, we make no representation as to the condition of the property (or properties) in question.



# 5878 HARRISON AVE

CINCINNATI, OH 45248



**Andrew Sellet** / Managing Director / [andrew.sellet@cushwake.com](mailto:andrew.sellet@cushwake.com) / +1 513 763 3053  
**Terry Ohnmeis** / Senior Director / [terry.ohnmeis@cushwake.com](mailto:terry.ohnmeis@cushwake.com) / +1 513 763 3059

Cushman & Wakefield Copyright 2024. No warranty or representation, express or implied, is made to the accuracy or completeness of the information contained herein, and same is submitted subject to errors, omissions, change of price, rental or other conditions, withdrawal without notice, and to any special listing conditions imposed by the property owner(s). As applicable, we make no representation as to the condition of the property (or properties) in question.