



**FOR LEASE | 4,750 SF**  
**OFFICE | PRIME SANTA CLARITA LOCATION**  
26883 Ruether Avenue | Santa Clarita, CA

RANDY CUDE  
Managing Director  
661.414.2004  
rcude@spectrumcre.com  
DRE License #01005000

[spectrumcre.com](http://spectrumcre.com) | 661.306.9600

**SPECTRUM**  
COMMERCIAL REAL ESTATE, INC.

No warranty, express or implied, is made as to the accuracy of the information contained herein. This information is submitted subject to errors, omissions, change of price, rental or other conditions, withdrawal without notice, and is subject to any special listing conditions imposed by our principals. Cooperating brokers, buyers, tenants and other parties who receive this document should not rely on it, but should use it as a starting point of analysis, and should independently confirm the accuracy of the information contained herein through a due diligence review of the books, records, files and documents that constitute reliable sources of the information described herein. Spectrum Commercial Real Estate, Inc., CA DRE #02042805

# FOR LEASE | OFFICE | PRIME SANTA CLARITA LOCATION

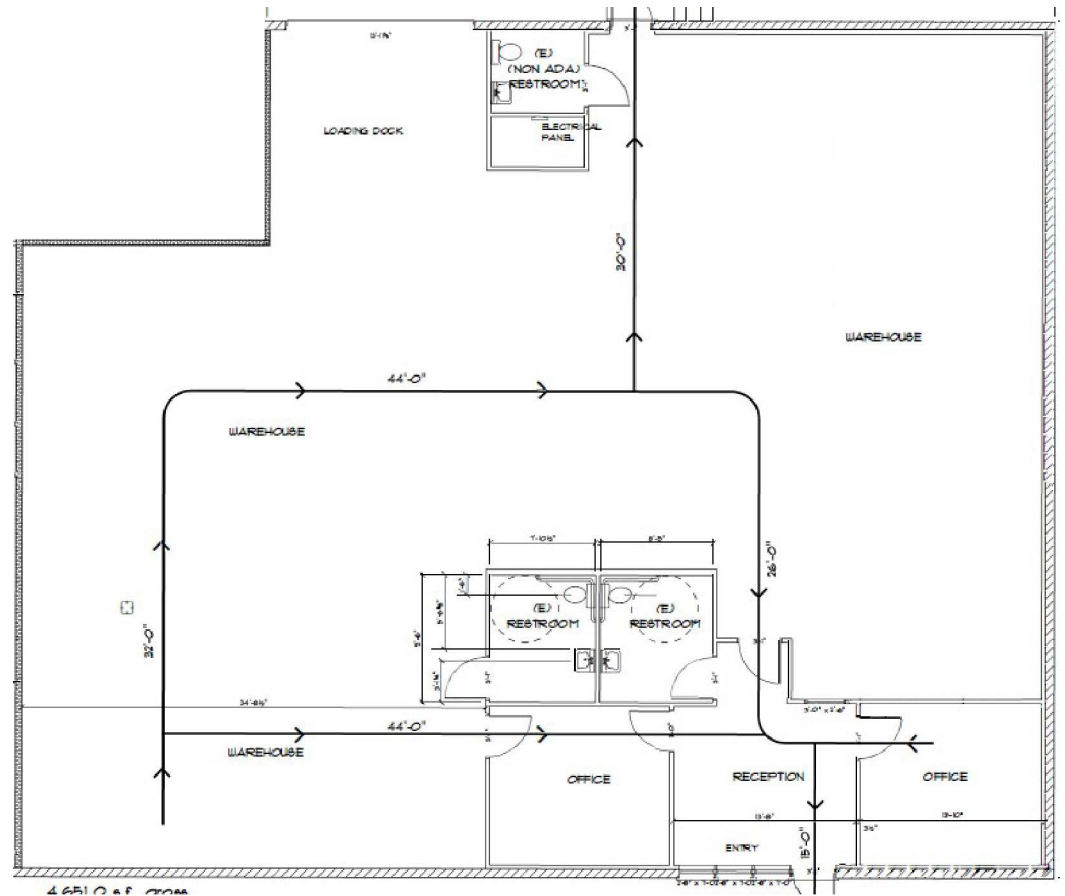
26883 Ruether Avenue | Santa Clarita, CA

## PROPERTY FEATURES

- **AVAILABILITY | 26883** - 4,750 SF
- 3 Offices, 2 Bathrooms
- 3 Man Doors – No Loading Doors
- Large Bull Pen Area
- Service Room
- End Cap
- Street Frontage
- Corner Location with Tremendous Street Visibility
- Minutes from 14 Freeway
- Close Proximity to Home Depot, Sams Club, Walmart, Fitness Facilities, Daycare Centers, Restaurants, and Shopping



## FLOOR PLAN



**RANDY CUDE**

Managing Director

661.414.2004

rcude@spectrumcre.com

DRE License #01005000

[spectrumcre.com](http://spectrumcre.com)

No warranty, express or implied, is made as to the accuracy of the information contained herein. This information is submitted subject to errors, omissions, change of price, rental or other conditions, withdrawal without notice, and is subject to any special listing conditions imposed by our principals. Cooperating brokers, buyers, tenants and other parties who receive this document should not rely on it, but should use it as a starting point of analysis, and should independently confirm the accuracy of the information contained herein through a due diligence review of the books, records, files and documents that constitute reliable sources of the information described herein. Spectrum Commercial Real Estate, Inc., CA DRE #02042805

**SPECTRUM**  
COMMERCIAL REAL ESTATE, INC.



# FOR LEASE | OFFICE | PRIME SANTA CLARITA LOCATION

26883 Ruether Avenue | Santa Clarita, CA



RANDY CUDE

Managing Director

661.414.2004

rcude@spectrumcre.com

DRE License #01005000

spectrumcre.com

No warranty, express or implied, is made as to the accuracy of the information contained herein. This information is submitted subject to errors, omissions, change of price, rental or other conditions, withdrawal without notice, and is subject to any special listing conditions imposed by our principals. Cooperating brokers, buyers, tenants and other parties who receive this document should not rely on it, but should use it as a starting point of analysis, and should independently confirm the accuracy of the information contained herein through a due diligence review of the books, records, files and documents that constitute reliable sources of the information described herein. Spectrum Commercial Real Estate, Inc., CA DRE #02042805

**SPECTRUM**  
COMMERCIAL REAL ESTATE, INC.