

TREEHOUSE VILLAGE LODGING FOR SALE

ALL SEASONS TREEHOUSE VILLAGE

275 N Main St, Eureka Springs, AR 72632



PROPERTY DESCRIPTION

Located near the edge of town, is a little village of 11 beautifully designed cottages with a treehouse feel. Nestled in a serene location, it feels like you're in the country, yet it's still walking distance to Downtown Eureka Springs and the train depot. Newer construction with intriguing architectural designs, low maintenance exteriors, and beautifully landscaped. Surrounded by trees and a peaceful creek flowing at the front of the property. Each treehouse also has a sitting area outside where your guests can sit, relax, and enjoy the beauty of the Ozarks!

PROPERTY HIGHLIGHTS

- 11 Treehouse Cottages
- Newer Construction
- Intriguing Architectural Design
- Low Maintenance Exteriors
- Beautifully Landscaped

OFFERING SUMMARY

Sale Price:	\$2,200,000
Number of Rooms:	11
Lot Size:	0.69 Acres
Building Size:	5,000 SF

DEMOGRAPHICS	1 MILE	3 MILES	5 MILES
Total Households	296	1,792	3,492
Total Population	515	2,986	5,578
Average HH Income	\$44,712	\$44,013	\$43,476

We obtained the information above from sources we believe to be reliable. However, we have not verified its accuracy and make no guarantee, warranty or representation about it. It is submitted subject to the possibility of errors, omissions, change of price, rental or other conditions, prior sale, lease or financing, or withdrawal without notice. We include projections, opinions, assumptions or estimates for example only, and they may not represent current or future performance of the property. You and your tax and legal advisors should conduct your own investigation of the property and transaction.

TIMOTHY SALMONSEN

Executive Broker
O: 479.231.1355
C: 479.366.6737
sgrlistingmanager@gmail.com
AR #EB00066512

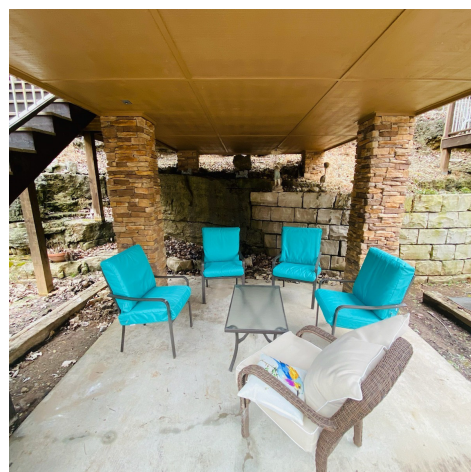
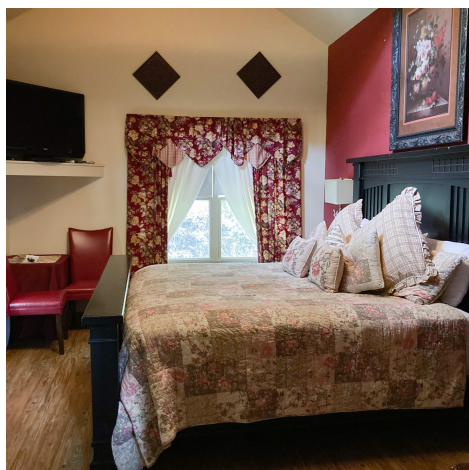
KW COMMERCIAL
3105 NE 11th St.
Suite 5
Bentonville, AR 72712

Each Office Independently Owned and Operated kwcommercial.com

TREEHOUSE VILLAGE LODGING FOR SALE

ALL SEASONS TREEHOUSE VILLAGE

275 N Main St, Eureka Springs, AR 72632



We obtained the information above from sources we believe to be reliable. However, we have not verified its accuracy and make no guarantee, warranty or representation about it. It is submitted subject to the possibility of errors, omissions, change of price, rental or other conditions, prior sale, lease or financing, or withdrawal without notice. We include projections, opinions, assumptions or estimates for example only, and they may not represent current or future performance of the property. You and your tax and legal advisors should conduct your own investigation of the property and transaction.

TIMOTHY SALMONSEN

Executive Broker
O: 479.231.1355
C: 479.366.6737
sgrlistingmanager@gmail.com
AR #EB00066512

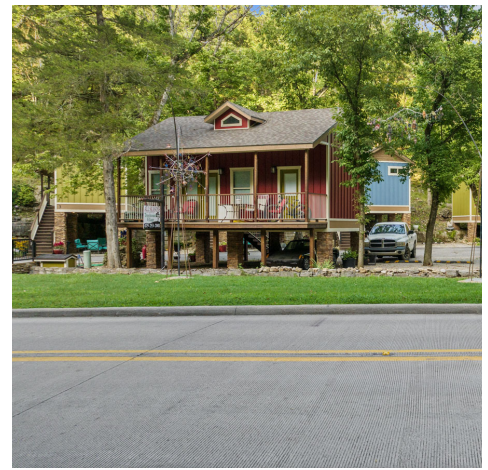
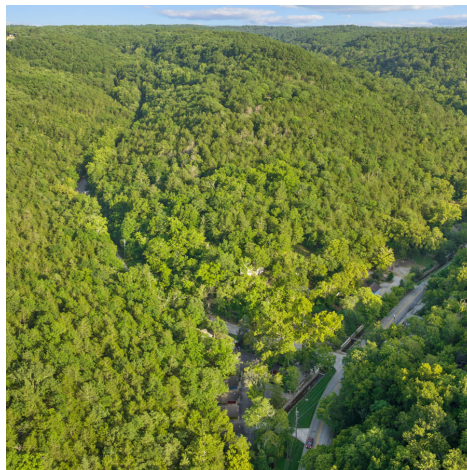
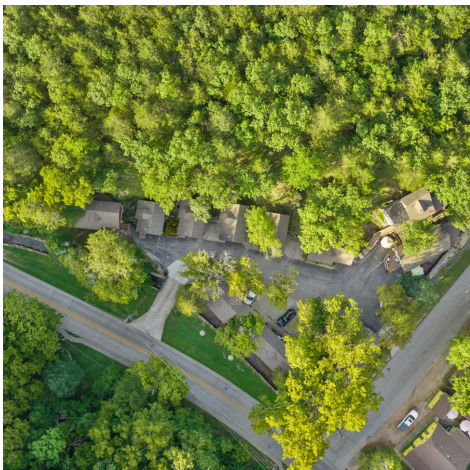
KW COMMERCIAL
3105 NE 11th St.
Suite 5
Bentonville, AR 72712

Each Office Independently Owned and Operated kwcommercial.com

TREEHOUSE VILLAGE LODGING FOR SALE

ALL SEASONS TREEHOUSE VILLAGE

275 N Main St, Eureka Springs, AR 72632



We obtained the information above from sources we believe to be reliable. However, we have not verified its accuracy and make no guarantee, warranty or representation about it. It is submitted subject to the possibility of errors, omissions, change of price, rental or other conditions, prior sale, lease or financing, or withdrawal without notice. We include projections, opinions, assumptions or estimates for example only, and they may not represent current or future performance of the property. You and your tax and legal advisors should conduct your own investigation of the property and transaction.

TIMOTHY SALMONSEN

Executive Broker
O: 479.231.1355
C: 479.366.6737
sgrlistingmanager@gmail.com
AR #EB00066512

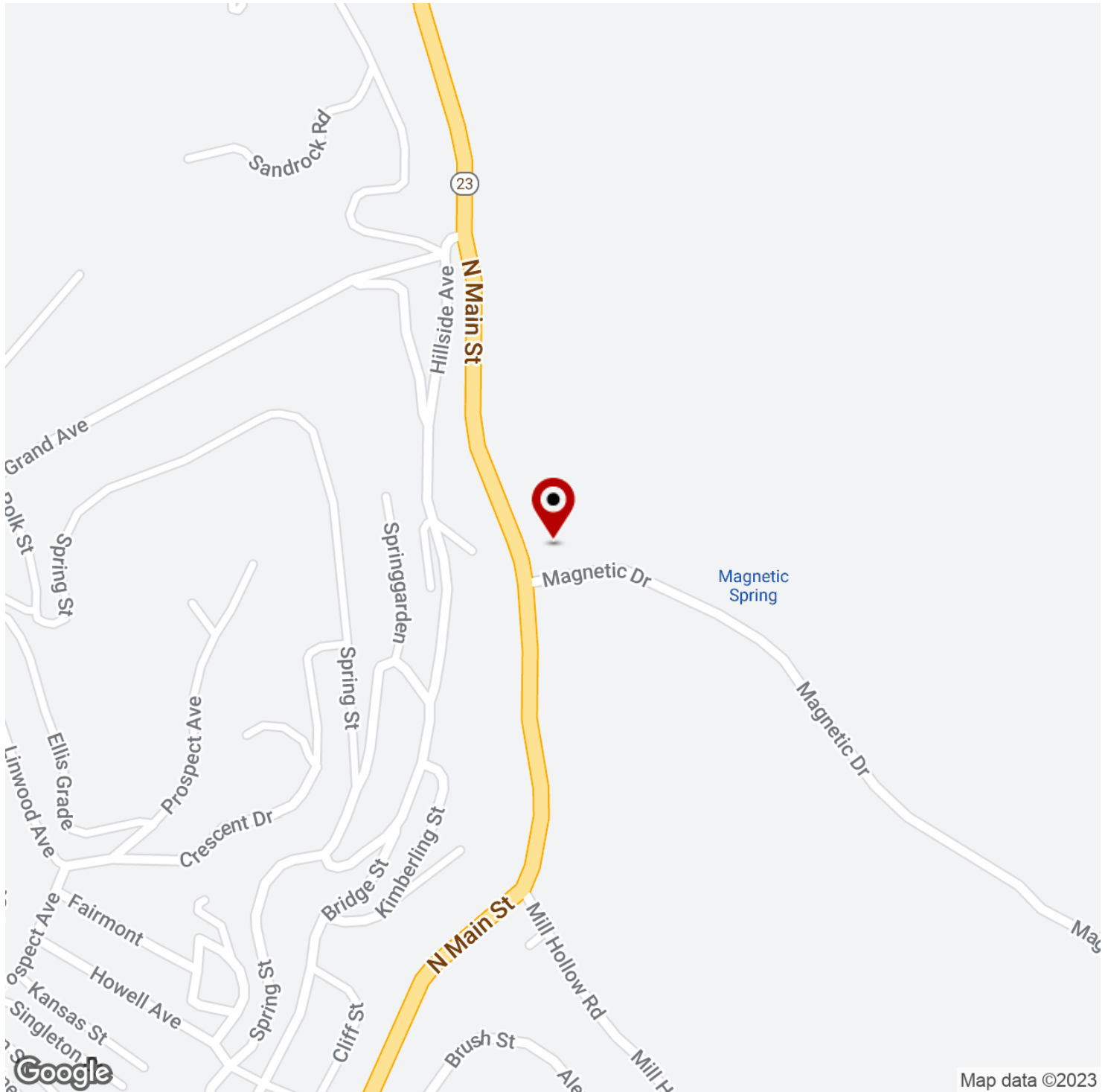
KW COMMERCIAL
3105 NE 11th St.
Suite 5
Bentonville, AR 72712

Each Office Independently Owned and Operated kwcommercial.com

TREEHOUSE VILLAGE LODGING FOR SALE

ALL SEASONS TREEHOUSE VILLAGE

275 N Main St, Eureka Springs, AR 72632



We obtained the information above from sources we believe to be reliable. However, we have not verified its accuracy and make no guarantee, warranty or representation about it. It is submitted subject to the possibility of errors, omissions, change of price, rental or other conditions, prior sale, lease or financing, or withdrawal without notice. We include projections, opinions, assumptions or estimates for example only, and they may not represent current or future performance of the property. You and your tax and legal advisors should conduct your own investigation of the property and transaction.

TIMOTHY SALMONSEN

Executive Broker
O: 479.231.1355
C: 479.366.6737
sgrlistingmanager@gmail.com
AR #EB00066512

KW COMMERCIAL

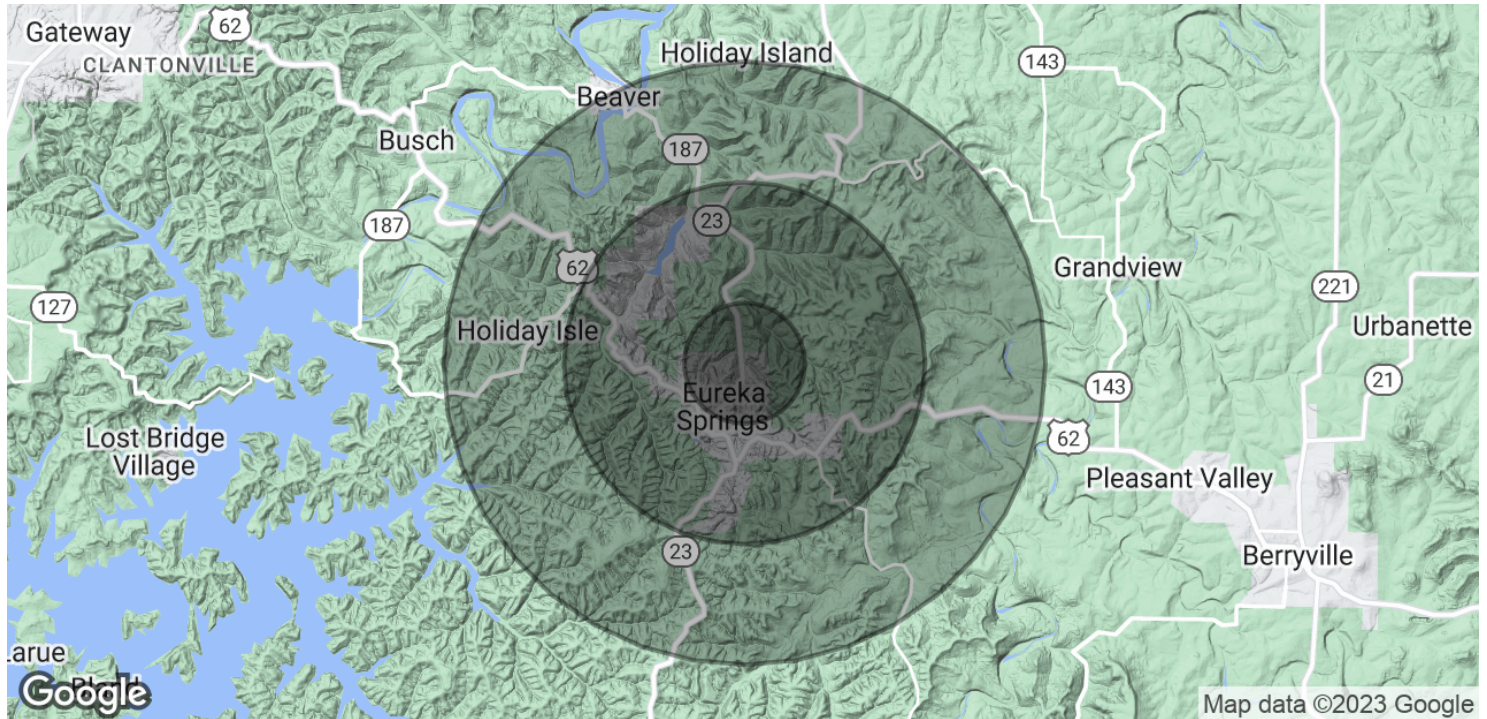
3105 NE 11th St.
Suite 5
Bentonville, AR 72712

Each Office Independently Owned and Operated kwcommercial.com

TREEHOUSE VILLAGE LODGING FOR SALE

ALL SEASONS TREEHOUSE VILLAGE

275 N Main St, Eureka Springs, AR 72632



POPULATION	1 MILE	3 MILES	5 MILES
Total Population	515	2,986	5,578
Average Age	52.5	53.9	56.0
Average Age (Male)	50.6	52.4	54.8
Average Age (Female)	53.6	54.8	56.6

HOUSEHOLDS & INCOME	1 MILE	3 MILES	5 MILES
Total Households	296	1,792	3,492
# of Persons per HH	1.7	1.7	1.6
Average HH Income	\$44,712	\$44,013	\$43,476
Average House Value	\$178,596	\$180,166	\$183,306

* Demographic data derived from 2020 ACS - US Census

We obtained the information above from sources we believe to be reliable. However, we have not verified its accuracy and make no guarantee, warranty or representation about it. It is submitted subject to the possibility of errors, omissions, change of price, rental or other conditions, prior sale, lease or financing, or withdrawal without notice. We include projections, opinions, assumptions or estimates for example only, and they may not represent current or future performance of the property. You and your tax and legal advisors should conduct your own investigation of the property and transaction.

TIMOTHY SALMONSEN

Executive Broker
O: 479.231.1355
C: 479.366.6737
sgrlistingmanager@gmail.com
AR #EB00066512

KW COMMERCIAL
3105 NE 11th St.
Suite 5
Bentonville, AR 72712

Each Office Independently Owned and Operated [kwcommercial.com](https://www.kwcommercial.com)