

SALE / LEASE
PROFESSIONAL OFFICE SPACE

161 Madison Avenue

161 MADISON AVENUE

New York, NY 10016

PRESENTED BY:

**JONATHAN D. STRAVITZ, SIOR
& ESQ.**

O: 212.252.8799

jstravitz@bioccre.com

NY #104991208353

JOHN B. AIRES, SIOR & MSRE

O: 212.252.8766

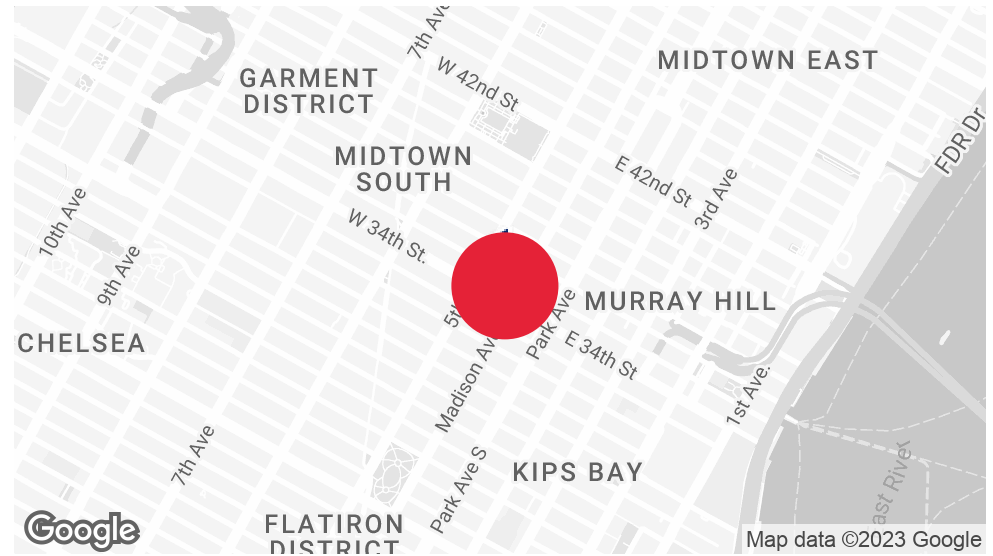
jaires@bioccre.com

NY #41A11074602



B I O C
Commercial Real Estate

PROPERTY SUMMARY



OFFERING SUMMARY

SALE PRICE:	\$1,400,000
LEASE RATE:	Negotiable
CONDO SIZE:	1,250 SF
AVAILABLE SF:	1,250 SF
PRICE / SF:	\$1,120.00

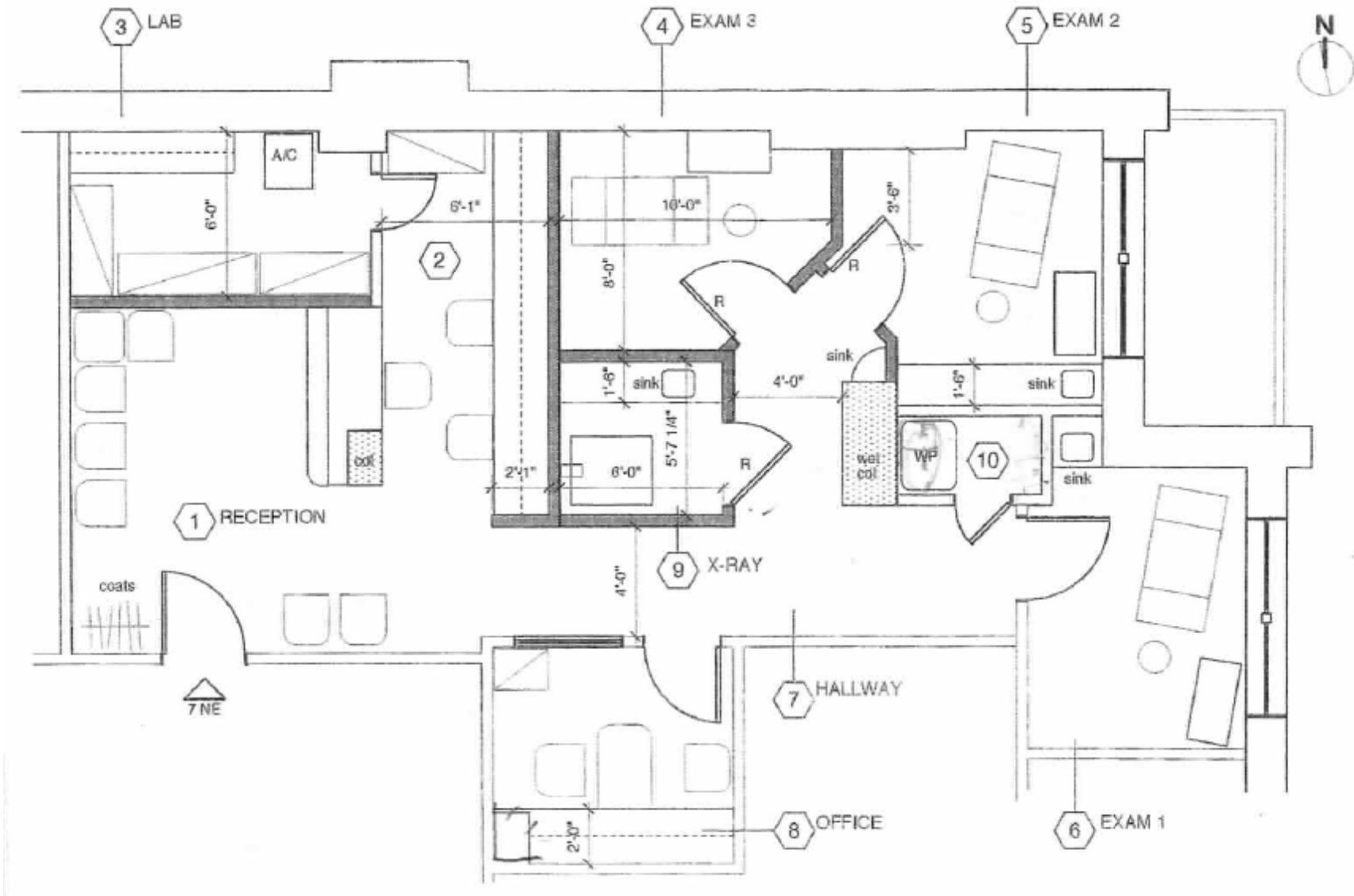
PROPERTY OVERVIEW

Prime Medical Office for Sale or Lease
Fully built out 1,250 SF space on the 7th Floor
Located on Madison Avenue between 33rd and 32nd Streets
24/7 Building
Financing permitted up to 90%
Conveniently located in midtown adjacent to Herald Square, Penn Station, and Grand Central Station. Major transportation includes subways (6, BDFM, NQRW, and PATH Trains).

JONATHAN D. STRAVITZ, SIOR & ESQ.
O: 212.252.8799
jstravitz@biocre.com
NY #104991208353

JOHN B. AIRES, SIOR & MSRE
O: 212.252.8766
jaires@biocre.com
NY #41AI1074602

FLOOR PLAN



JONATHAN D. STRAVITZ, SIOR & ESQ.

O: 212.252.8799

jstravitz@biocre.com

NY #104991208353

JOHN B. AIRES, SIOR & MSRE

O: 212.252.8766

jaires@biocre.com

NY #41A11074602

ADDITIONAL PHOTOS



JONATHAN D. STRAVITZ, SIOR & ESQ.
O: 212.252.8799
jstravitz@bioccre.com
NY #104991208353

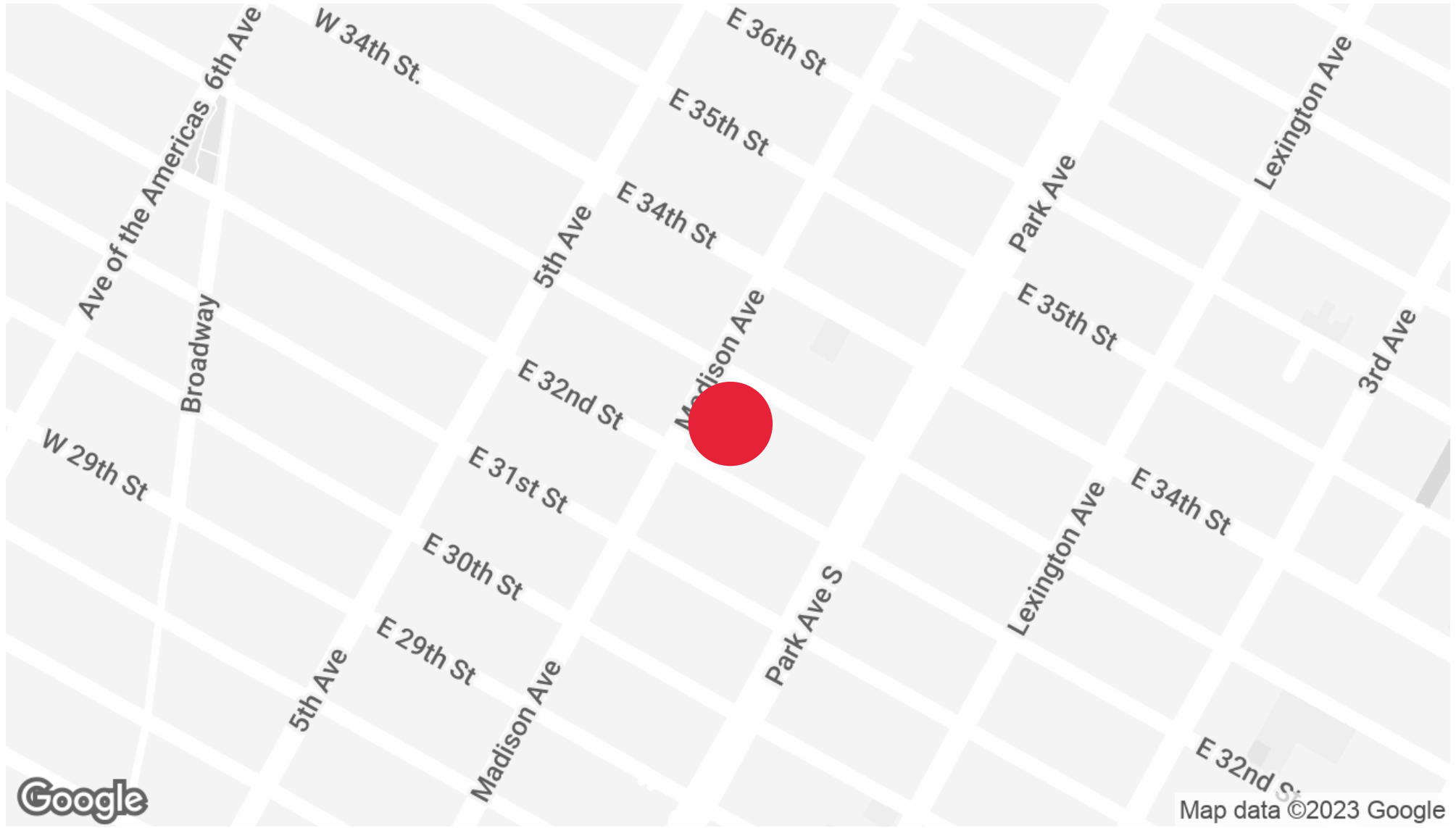
161 MADISON AVENUE | New York, NY 10016



JOHN B. AIRES, SIOR & MSRE
O: 212.252.8766
jaires@bioccre.com
NY #41AI1074602

BIOC Commercial Real Estate LLC

LOCATION MAP



JONATHAN D. STRAVITZ, SIOR & ESQ.

O: 212.252.8799

jstravitz@bioccre.com

NY #104991208353

JOHN B. AIRES, SIOR & MSRE

O: 212.252.8766

jaires@bioccre.com

NY #41AI1074602

161 MADISON AVENUE | New York, NY 10016