

TWO PARCELS TOTALING 27 ACRES

Highway 96, Fort Valley, GA 31030
Peach County

Parcel A - 18.85 Acres

- Zoned C-2 Commercial

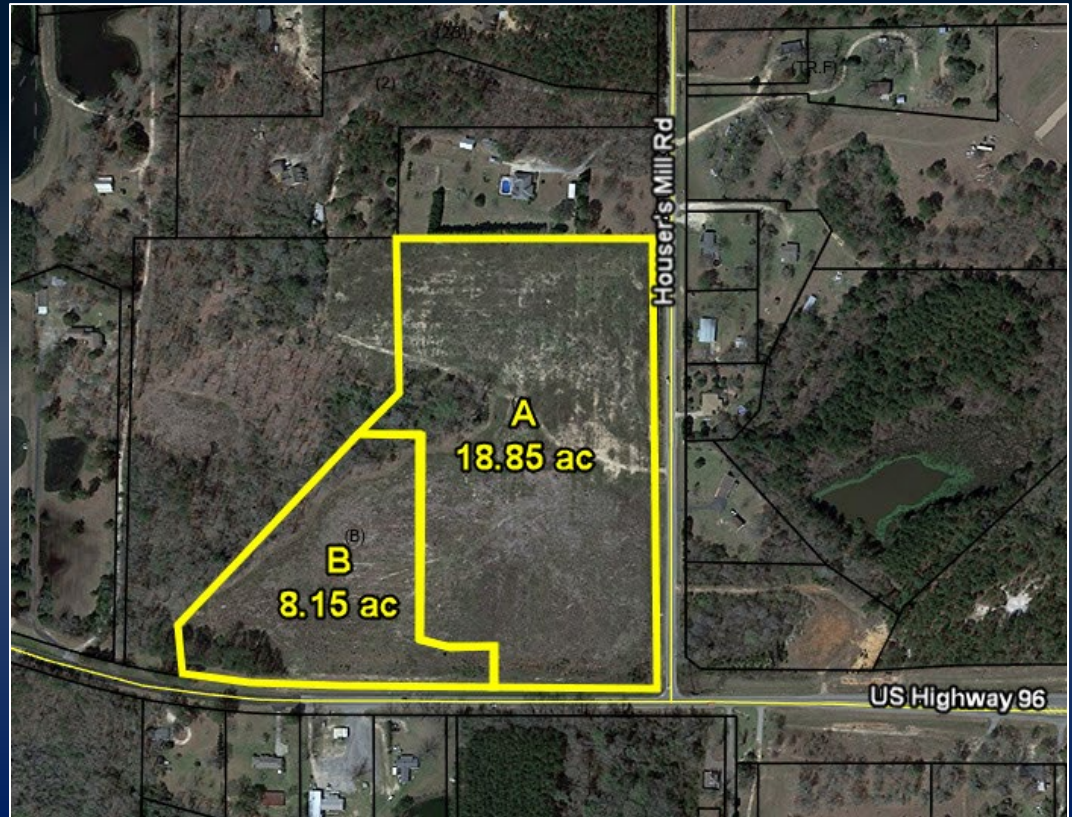
Parcel B - 8.15 Acres

- Zoned R-AG with a Commercial Class

Possible additional acreage available

1300 ft of frontage on Hwy 96 & 1300 ft of frontage on Housers Mill Rd

Call For Pricing



DEREK FOSTER C: 478.997.1024

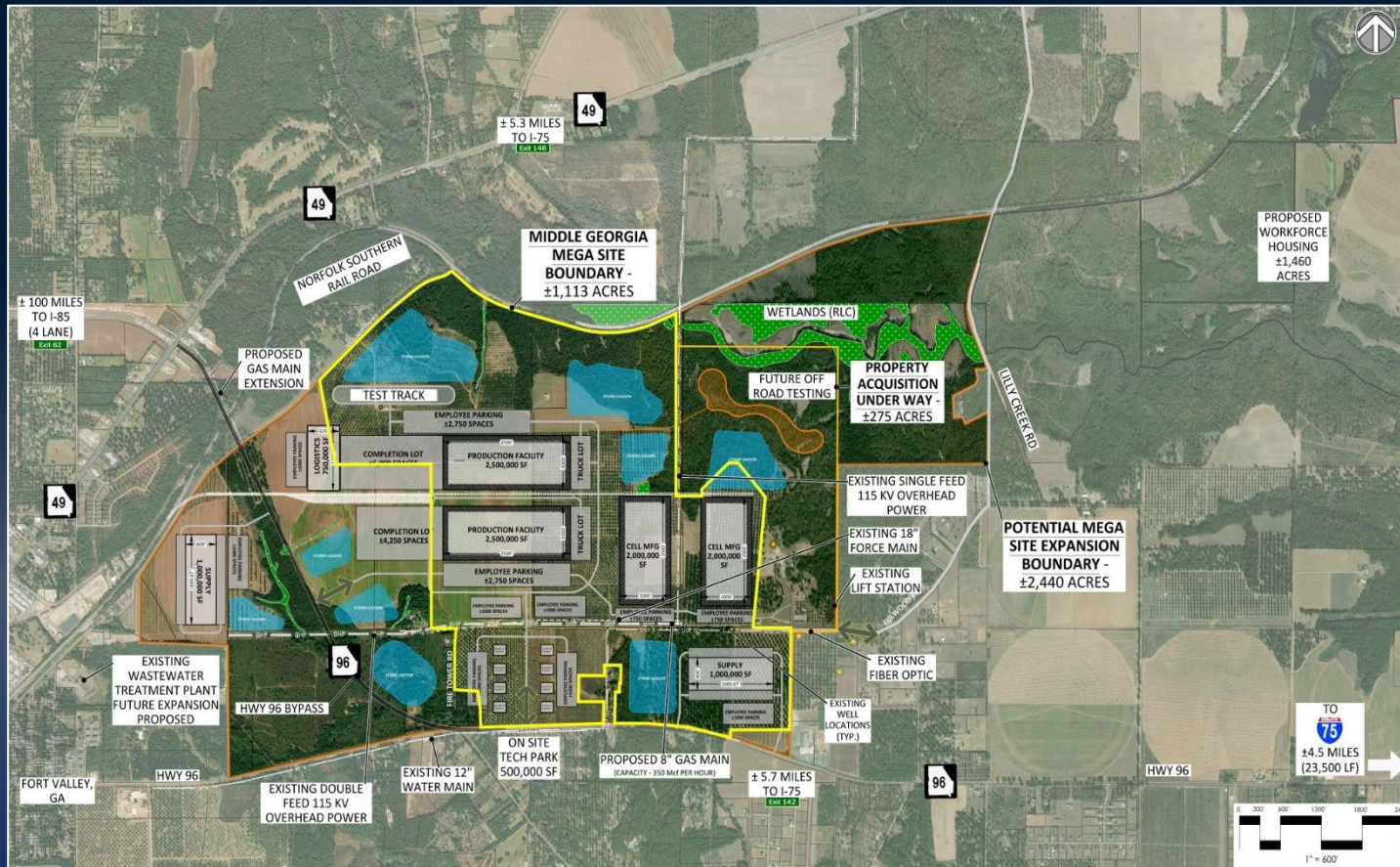
DFOSTER@THESUMMITGROUPMACON.COM

4124 ARKWRIGHT ROAD, SUITE 1 MACON, GA 31210

O: 478.750.7507

WWW.THESUMMITGROUPMACON.COM





CONCEPTUAL LAYOUT EXHIBIT
MIDDLE GEORGIA MEGA SITE
 PEACH COUNTY / GA

THOMAS & HUTTON
 50 PARK OF COMMERCE WAY
 SAVANNAH, GA 31405 • 912.234.1300
 www.thomasandhutton.com

HIGHWAY 96, FORT VALLEY, GA 31030 PEACH COUNTY



The information contained herein has been compiled from various sources, both private and public. It is accurate and complete only to the extent to which The Summit Group has been able to ascertain from third party sources. As such, no warranty or guarantee is given or implied with regard to the accuracy or completeness of any information contained herein. Any interested party shall be required to conduct its own due diligence and investigations to verify, review, audit, or otherwise insure the information contained herein.