



**1007 UNION
CENTER DRIVE**
ALPHARETTA, GA 30004

For Lease
3,500 - 7,000 +/- SF
Office / Warehouse Space

ROBERT GRAHAM

Vice President
404.942.2051
rgraham@kingindustrial.com

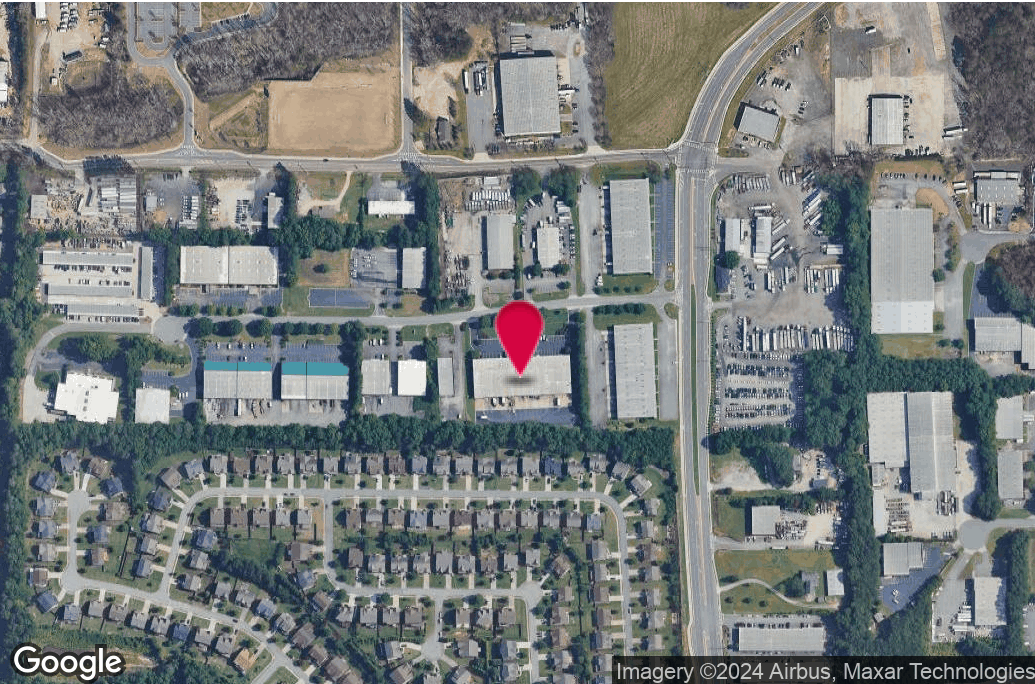
BRANDON HUFT

Vice President
404.942.2009
bhuft@kingindustrial.com

King *Industrial
Realty, Inc.*

Industrial • Commercial • Investment
404.942.2000 | kingindustrial.com

FOR LEASE
3,500 - 7,000 +/- SF
OFFICE / WAREHOUSE
SPACE



PROPERTY HIGHLIGHTS

- **SUITE G:**
 - 3,500+/- SF
 - 536 SF Office
 - (1) 12' W x 14' H Grade Level Drive-In Door
 - 18' +/- Clear Height
- **SUITE H:**
 - 3,500+/- SF Total
 - 515 SF Office
 - (1) 12' W x 14' H Grade Level Drive-In Door
 - 18' +/- Clear Height
- **Suites G/H Can Be Leased Together or Separately**

BUILDING SUMMARY

Available SF:	3,500 - 7,000 SF
Building Size:	37,961 SF

ROBERT GRAHAM

Vice President
404.942.2051
rgraham@kingindustrial.com

BRANDON HUFT

Vice President
404.942.2009
bhuft@kingindustrial.com

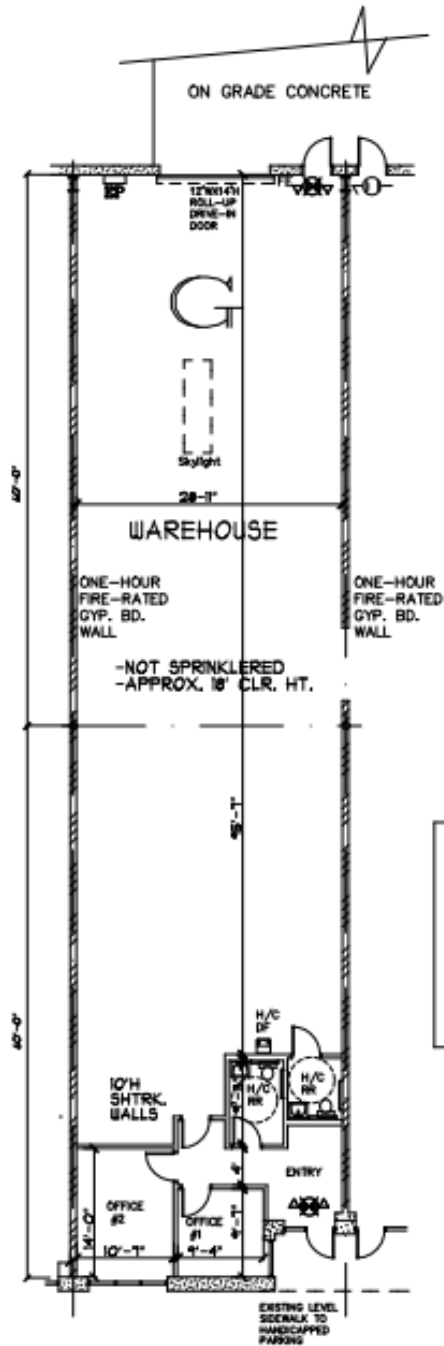
Every effort has been made to provide accurate information, but no liability is assumed for errors or omissions.



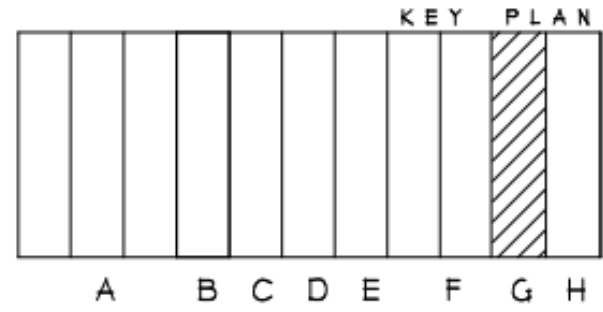
Industrial • Commercial • Investment
404.942.2000 | kingindustrial.com

SUITE G FLOOR PLAN

1007
UNION CENTER
DRIVE,
SUITE G
Alpharetta, GA 30004

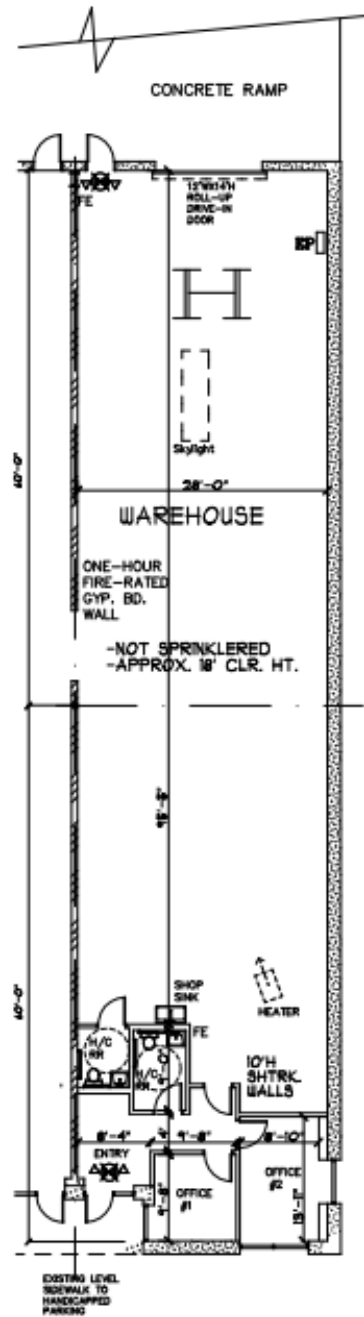


SQUARE FOOTAGE	
OFFICE	536
Warehouse	2,964
TOTAL	3,500



APPROX. SCALE 1/16" = 1'-0"

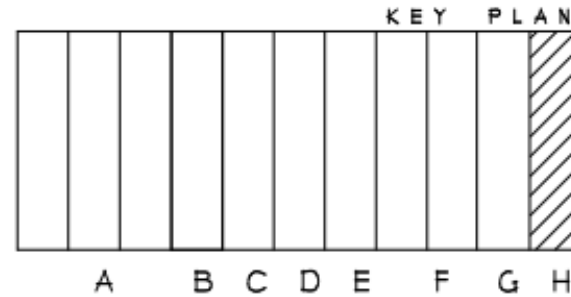
SUITE H FLOOR PLAN



1007
UNION CENTER
DRIVE,
SUITE H

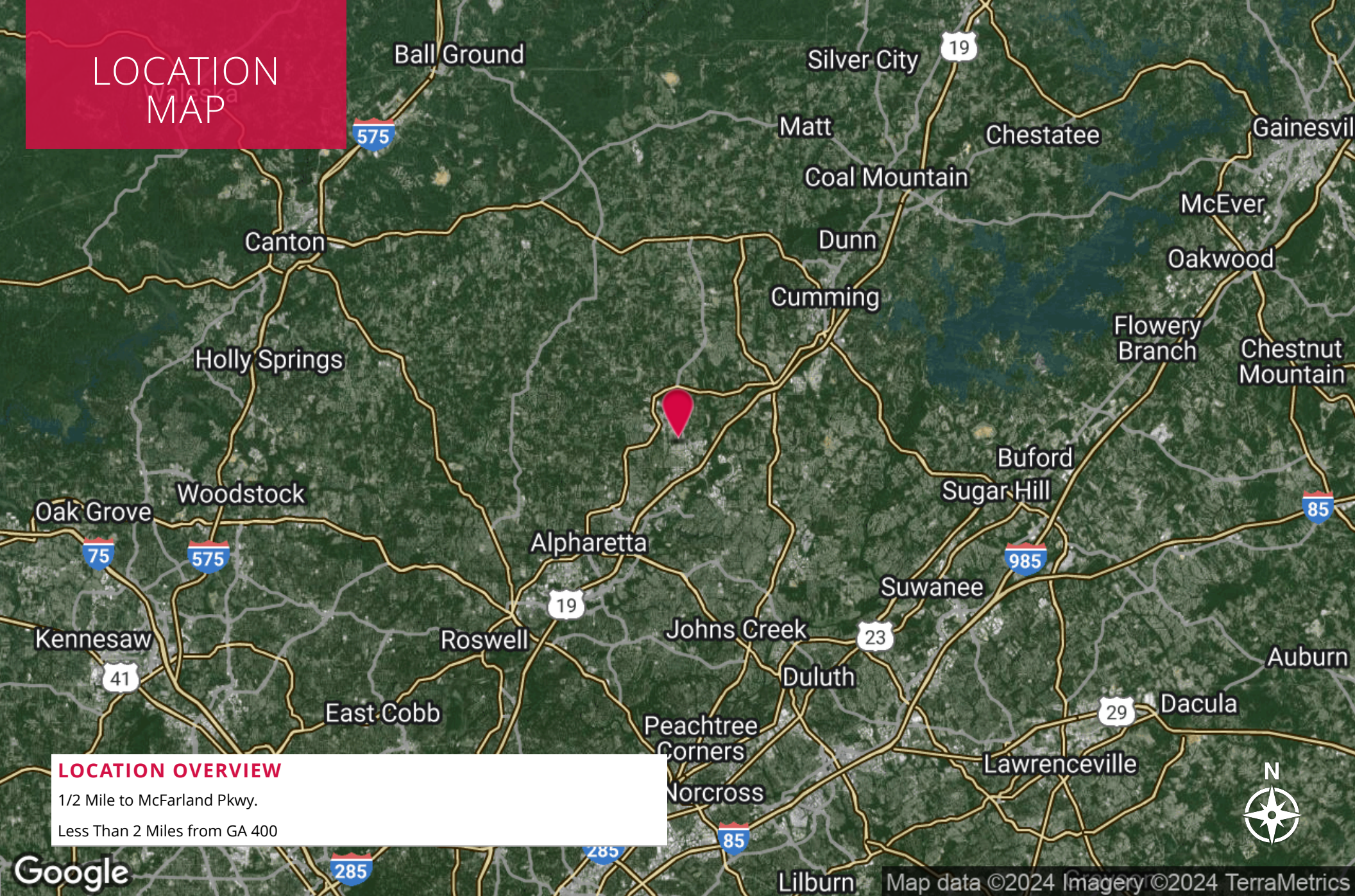
Alpharetta, GA 30004

SQUARE FOOTAGE	
OFFICE	515
Warehouse	2,985
TOTAL	3,500



APPROX. SCALE 1/16" = 1'-0"

LOCATION MAP



ROBERT GRAHAM

Vice President

404.942.2051

rgraham@kingindustrial.com

Every effort has been made to provide accurate information, but no liability is assumed for errors or omissions.

BRANDON HUFT

Vice President

404.942.2009

bhuft@kingindustrial.com

king Industrial Realty, Inc.

CORFAC INTERNATIONAL

Industrial • Commercial • Investment
404.942.2000 | kingindustrial.com

EXCLUSIVELY LISTED BY:

ROBERT GRAHAM

Vice President
rgraham@kingindustrial.com
404.942.2051

BRANDON HUFT

Vice President
bhuft@kingindustrial.com
404.942.2009

King Industrial
Realty, Inc.

Industrial • Commercial • Investment
404.942.2000 | kingindustrial.com