

7544 DUBLIN BLVD.

Dublin, CA 94568

MEDICAL / RETAIL SPACE AVAILABLE FOR SUBLEASE



Mitchell Hertz

Executive Director

+1 925 274 2803 (p)

+1 925 876 1608 (m)

mitch.hertz@cushwake.com

Josh Hertz

Associate

+1 925 621 3846 (p)

josh.hertz@cushwake.com



©2024 Cushman & Wakefield. All rights reserved. The information contained in this communication is strictly confidential. This information has been obtained from sources believed to be reliable but has not been verified. NO WARRANTY OR REPRESENTATION, EXPRESS OR IMPLIED, IS MADE AS TO THE CONDITION OF THE PROPERTY (OR PROPERTIES) REFERENCED HEREIN OR AS TO THE ACCURACY OR COMPLETENESS OF THE INFORMATION CONTAINED HEREIN, AND SAME IS SUBMITTED SUBJECT TO ERRORS, OMISSIONS, CHANGE OF PRICE, RENTAL OR OTHER CONDITIONS, WITHDRAWAL WITHOUT NOTICE, AND TO ANY SPECIAL LISTING CONDITIONS IMPOSED BY THE PROPERTY OWNER(S). ANY PROJECTIONS, OPINIONS OR ESTIMATES ARE SUBJECT TO UNCERTAINTY AND DO NOT SIGNIFY CURRENT OR FUTURE PROPERTY PERFORMANCE.

[CUSHMANWAKEFIELD.COM](https://www.cushmanwakefield.com)

7544 DUBLIN BLVD.

Dublin, CA 94568

SPACE DETAILS

Medical / Retail Space Available for Sublease

AVAILABLE

2,173 SF Office/Retail

SUITE

7550

FLOOR

Partial 1st

OCCUPANCY

30 Days

LEASE STATUS

Available

BUILD-OUT

Full Build-Out

CONDITION

Excellent

RENT

\$115.00 RSF, FS

TYPE

Sublet

TERM

Through August 31, 2030

LISTED

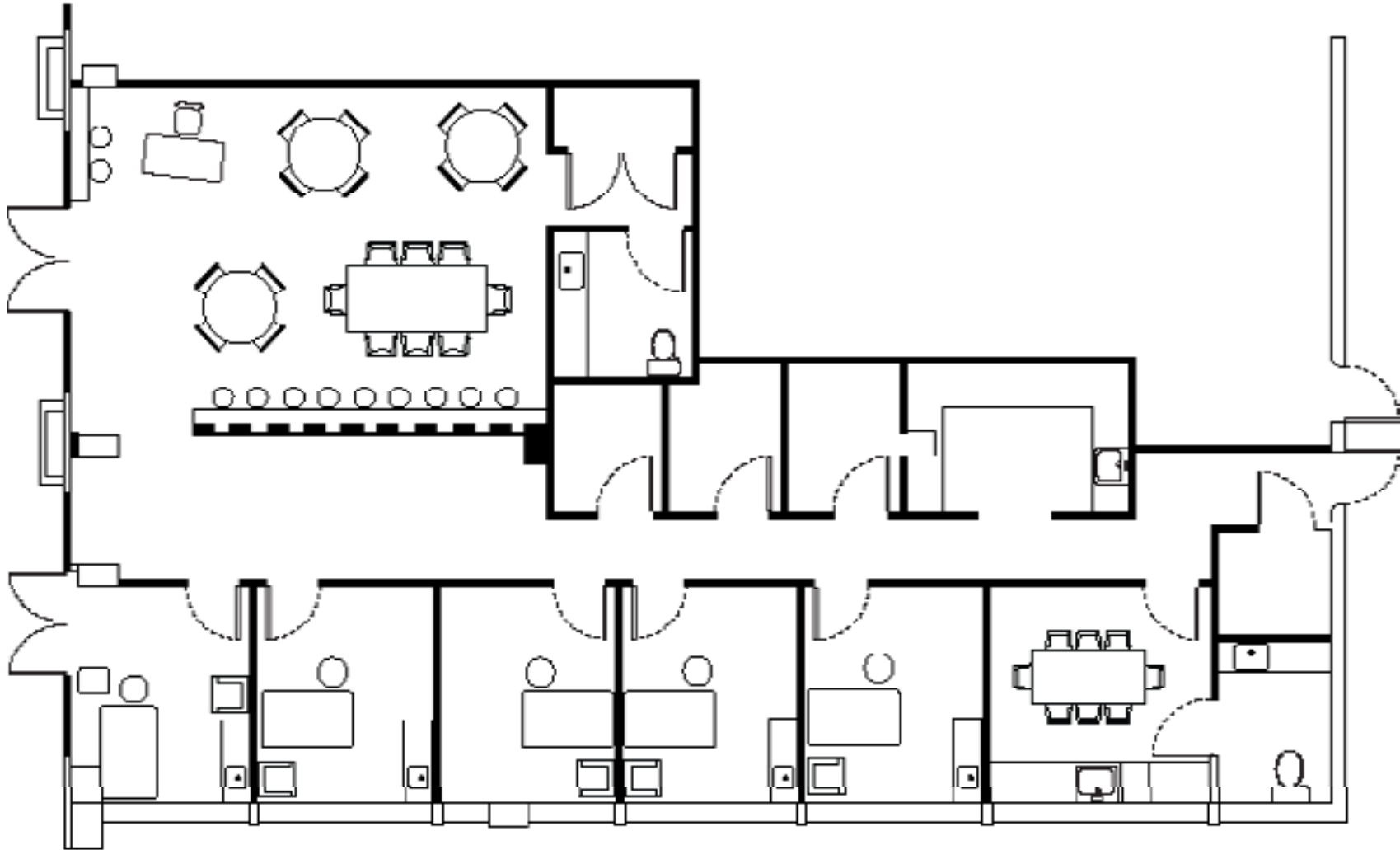
7 Weeks

7544 DUBLIN BLVD.

Dublin, CA 94568

FLOOR PLANS

Medical / Retail Space Available for Sublease



7544 DUBLIN BLVD.

Dublin, CA 94568

Medical / Retail Space Available for Sublease

Mitchell Hertz

Executive Director
+1 925 274 2803 (p)
+1 925 876 1608 (m)
mitch.hertz@cushwake.com

Josh Hertz

Associate
+1 925 621 3846 (p)
josh.hertz@cushwake.com

[CUSHMANWAKEFIELD.COM](https://www.cushmanwakefield.com)



©2024 Cushman & Wakefield. All rights reserved. The information contained in this communication is strictly confidential. This information has been obtained from sources believed to be reliable but has not been verified. NO WARRANTY OR REPRESENTATION, EXPRESS OR IMPLIED, IS MADE AS TO THE CONDITION OF THE PROPERTY (OR PROPERTIES) REFERENCED HEREIN OR AS TO THE ACCURACY OR COMPLETENESS OF THE INFORMATION CONTAINED HEREIN, AND SAME IS SUBMITTED SUBJECT TO ERRORS, OMISSIONS, CHANGE OF PRICE, RENTAL OR OTHER CONDITIONS, WITHDRAWAL WITHOUT NOTICE, AND TO ANY SPECIAL LISTING CONDITIONS IMPOSED BY THE PROPERTY OWNER(S). ANY PROJECTIONS, OPINIONS OR ESTIMATES ARE SUBJECT TO UNCERTAINTY AND DO NOT SIGNIFY CURRENT OR FUTURE PROPERTY PERFORMANCE.