

# 142 S Bickett Boulevard

Office for Lease | Louisburg, NC



**NAI** TRI PROPERTIES

# BUILDING FEATURES

ADDRESS	142 S Bickett Boulevard, Louisburg, NC 27549
BUILDING SIZE	1,980 SF
SPACE AVAILABLE	1,980 RSF 544 SF canopy - drive through
DATE AVAILABLE	Immediately
PARKING	13 spaces including 1 handicap
FEATURES	<ul style="list-style-type: none"><li>• Former Freestanding Bank Branch</li><li>• Digital Outdoor Marquee Sign</li><li>• 2 Drive-Thru Lines</li><li>• Carrier Tube System in Drive Thru</li><li>• Bank Vault in Place</li><li>• 4 Offices</li><li>• 1 Conference Room</li><li>• Breakroom</li><li>• Teller Counter &amp; Window at Drive Thru</li><li>• 3 parking lot lights</li></ul>

**RENTAL RATE**

**Call Broker for Pricing**

## CONTACT

JACK BARNES | 919.817.4163 | jabarnes@triprop.com

MICHAEL WALLACE, CCIM | 919.219.1112 | mwallace@triprop.com

**NAITRI** PROPERTIES

# ±1,980 SF

## OFFICE FOR LEASE



**2 LANE DRIVE-THRU**

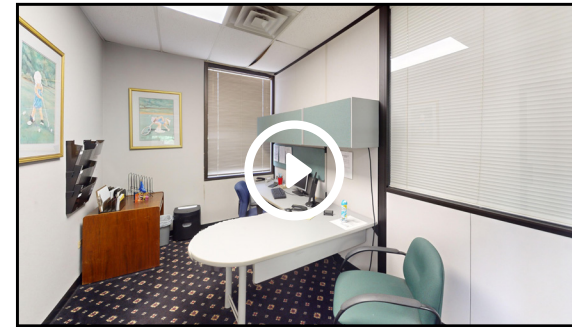
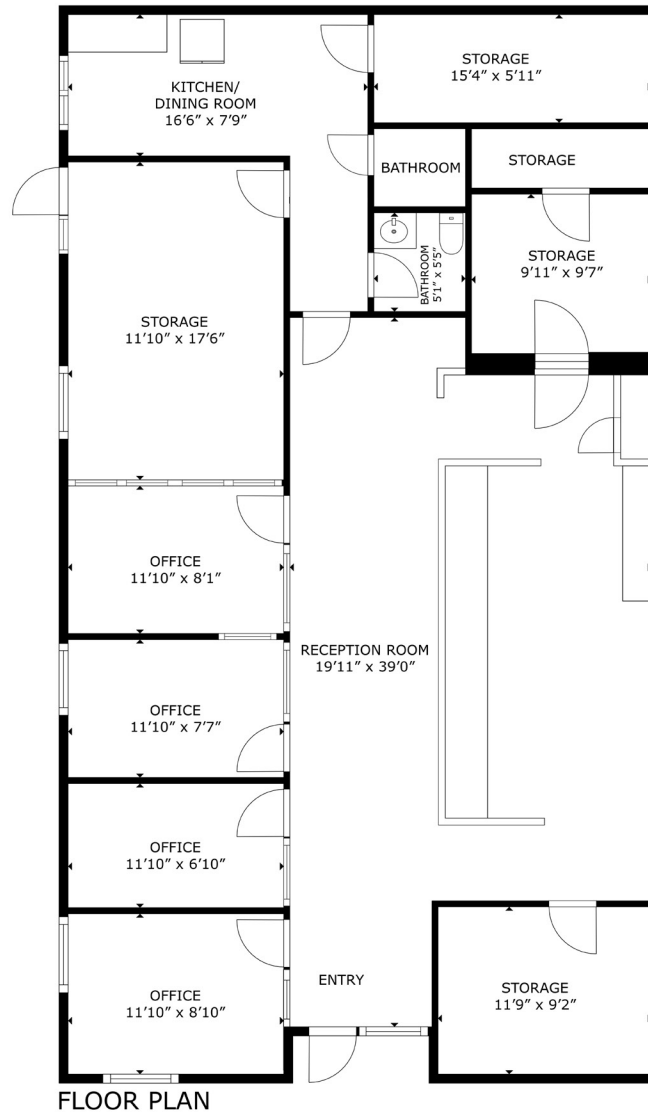


**FORMER BANK BRANCH**



**DIGITAL MARQUEE SIGN**

# FLOOR PLAN



[Click for Virtual Tour](#)

## CONTACT

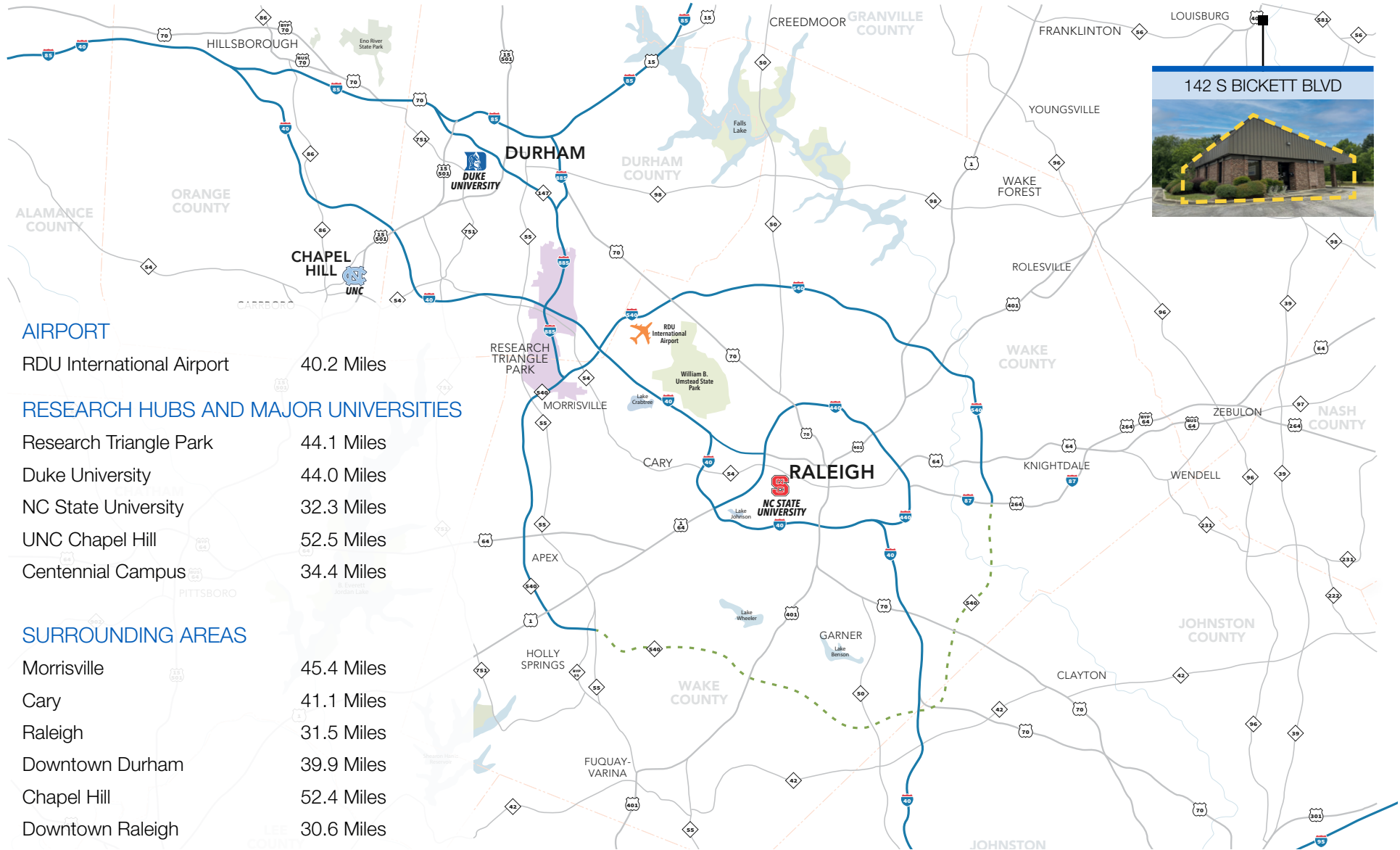
JACK BARNES | 919.817.4163 | [jabarnes@triprop.com](mailto:jabarnes@triprop.com)

MICHAEL WALLACE, CCIM | 919.219.1112 | [mwallace@triprop.com](mailto:mwallace@triprop.com)

All information provided herein is from sources deemed reliable. However, all information is subject to verification. NAI Tri Properties does not independently verify nor warrant the accuracy of the information.

**NAI** TRI PROPERTIES

# TRIANGLE REGION



## CONTACT

JACK BARNES | 919.817.4163 | [jabarnes@triprop.com](mailto:jabarnes@triprop.com)  
 MICHAEL WALLACE, CCIM | 919.219.1112 | [mwallace@triprop.com](mailto:mwallace@triprop.com)



All information provided herein is from sources deemed reliable. However, all information is subject to verification. NAI Tri Properties does not independently verify nor warrant the accuracy of the information.

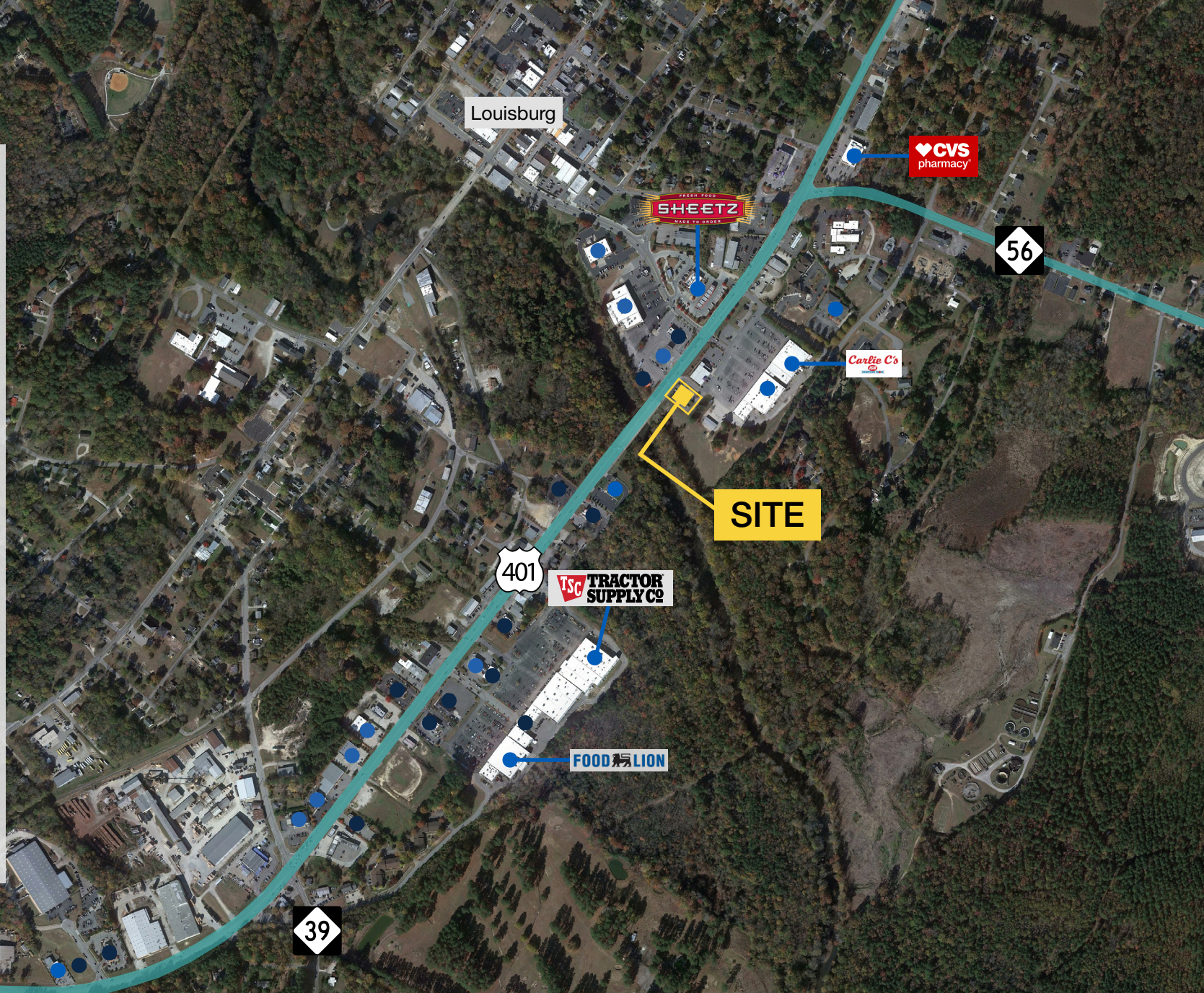
# AERIAL

## FOOD

- Bojangles
- Cookout
- Dairy Queen
- Hardee's
- Mayflower Seafood
- McDonald's
- Pizza Hut
- Remington Grill
- Subway
- Sunrise Biscuit Kitchen
- Taco Bell
- Waffle House
- Wendy's

## SERVICES

- Advance Auto Parts
- AutoZone Auto Parts
- BP
- Carlie C's IGA
- Carter Bank & Trust
- CVS
- Duke Primary Care
- Family Dollar
- First National Bank
- Food Lion
- Life Total Fitness
- Louisburg Police/Fire Department
- Moss Foods
- O'Reilly Auto Parts
- Sheetz
- Speedway
- Tractor Supply Company
- Verizon
- Whistle Express Car Wash



## CONTACT

JACK BARNES | 919.817.4163 | [jabarnes@triprop.com](mailto:jabarnes@triprop.com)

MICHAEL WALLACE, CCIM | 919.219.1112 | [mwallace@triprop.com](mailto:mwallace@triprop.com)

All information provided herein is from sources deemed reliable. However, all information is subject to verification. NAI Tri Properties does not independently verify nor warrant the accuracy of the information.



## CONTACT

JACK BARNES | 919.817.4163 | [jabarnes@triprop.com](mailto:jabarnes@triprop.com)

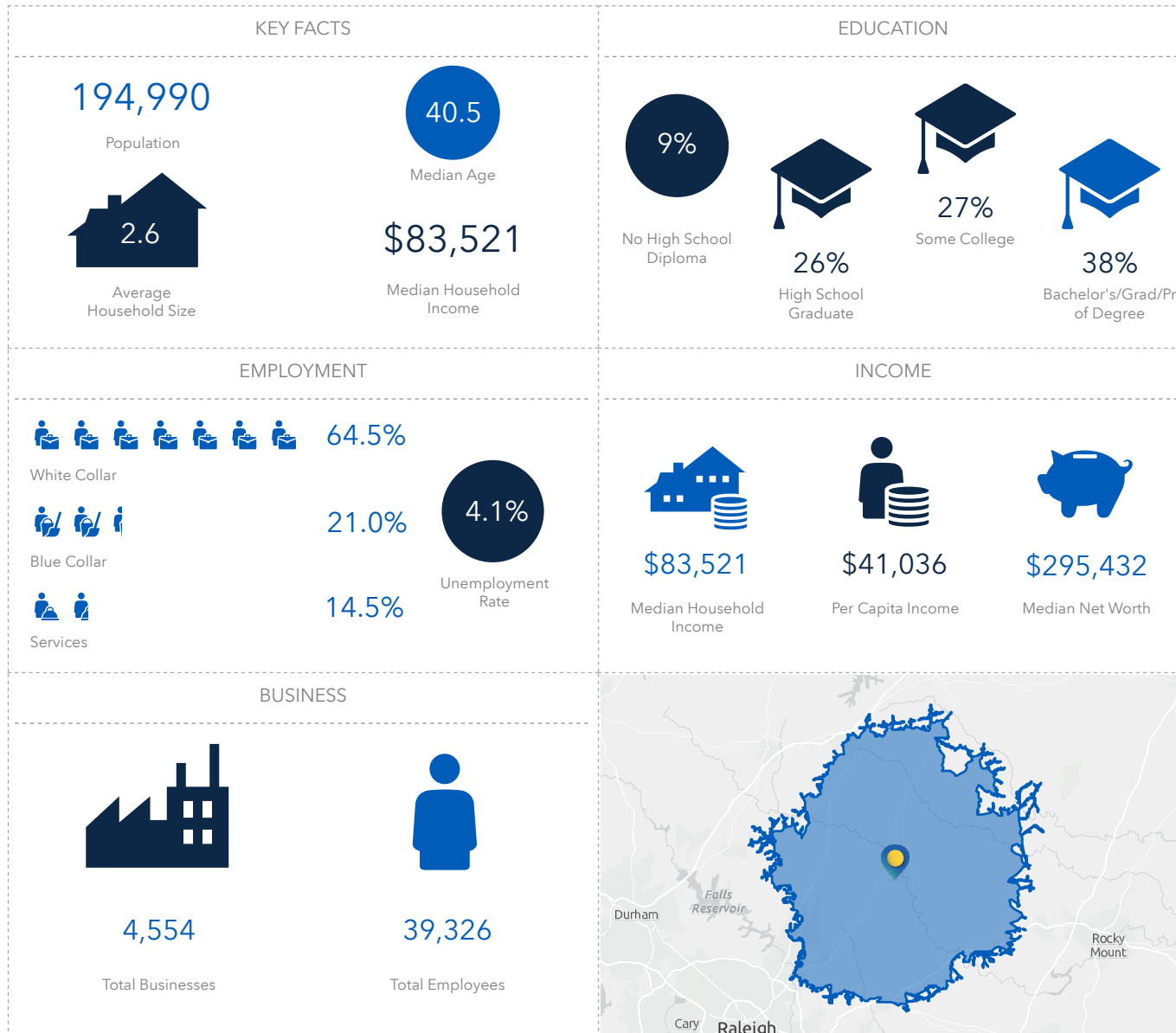
MICHAEL WALLACE, CCIM | 919.219.1112 | [mwallace@triprop.com](mailto:mwallace@triprop.com)

All information provided herein is from sources deemed reliable. However, all information is subject to verification. NAI Tri Properties does not independently verify nor warrant the accuracy of the information.

**NAI** TRI PROPERTIES

# DEMOGRAPHICS

27 Minute Drive Time



## CONTACT

JACK BARNES | 919.817.4163 | [jabarnes@triprop.com](mailto:jabarnes@triprop.com)

MICHAEL WALLACE, CCIM | 919.219.1112 | [mwallace@triprop.com](mailto:mwallace@triprop.com)



All information provided herein is from sources deemed reliable. However, all information is subject to verification. NAI Tri Properties does not independently verify nor warrant the accuracy of the information.