



The Ribeiro Companies

# PROFESSIONAL OFFICE SPACE FOR LEASE



## 601 SIERRA ROSE DR. RENO, NV 89511 QUAIL CORNERS SOUTH MAINTENANCE ASSOCIATION

THE RIBEIRO COMPANIES HAVE SPECIALIZED IN COMMERCIAL PROPERTIES FOR OVER 50 YEARS.

**EXCLUSIVELY LISTED  
LEASE OPPORTUNITY**

**EDWARD G. YUILL**  
ED.YUILL@RIBEIROCORP.COM

**CALL US TODAY AT  
775.825.7979**



**OFFICE HOURS:**  
Monday-Friday  
8:00 AM—5:00 PM

6490 S. McCarran Blvd., Bldg. E  
Reno, NV 89509

[www.ribeirocorp.com](http://www.ribeirocorp.com)

*This information has been secured from sources we believe to be reliable, however, we make no representations or warranties, expressed or implied, as to the accuracy of the information. References to square footage or age are approximate. Buyer must verify the information and bears all risk for any inaccuracies. © 2014 The Ribeiro Companies [www.ribeirocorp.com](http://www.ribeirocorp.com)*

**Project Mgt./Brokerage: Edward G. Yuill**  
**Design/Development: Johnny A. Ribeiro**



The Ribeiro Companies

# PROPERTY INFORMATION

## 601 SIERRA ROSE DRIVE • RENO, NV 89511

Suite(s):	103	203, 204, 205
Asking Rent:	\$3,268.00 Per Month (\$2.00 PSF)	\$7,736.00 Per Month (\$1.50 PSF)
Estimated CAM:	\$1,209.00 Per Month (\$0.74)	\$3,816.00 Per Month (\$0.74)
Property Type:	Zoning: PLANNED DEVELOPMENT (PD) • Building Type: Office Building	
Lease Type:	NNN	
Tenancy:	Multi	
Square Footage:	1,634 sq ft	5,157 sq ft
Available:	May 2025	Now
Layout	Medical lab draw space.	Mostly open with 10 private offices, reception and waiting area, conference room with (2) break areas, ADA elevator, additional rear entrance/exit.
Year Built:	2005	
Broker	3%	

**THE RIBEIRO COMPANIES HAVE SPECIALIZED IN COMMERCIAL PROPERTIES FOR OVER 50 YEARS.**

**EXCLUSIVELY LISTED  
LEASE OPPORTUNITY**

**EDWARD G. YUILL**  
ED.YUILL@RIBEIROCORP.COM

**CALL US TODAY AT  
775.825.7979**



**OFFICE HOURS:**  
Monday-Friday  
8:00 AM—5:00 PM

6490 S. McCarran Blvd., Bldg. E  
Reno, NV 89509

[www.ribeirocorp.com](http://www.ribeirocorp.com)

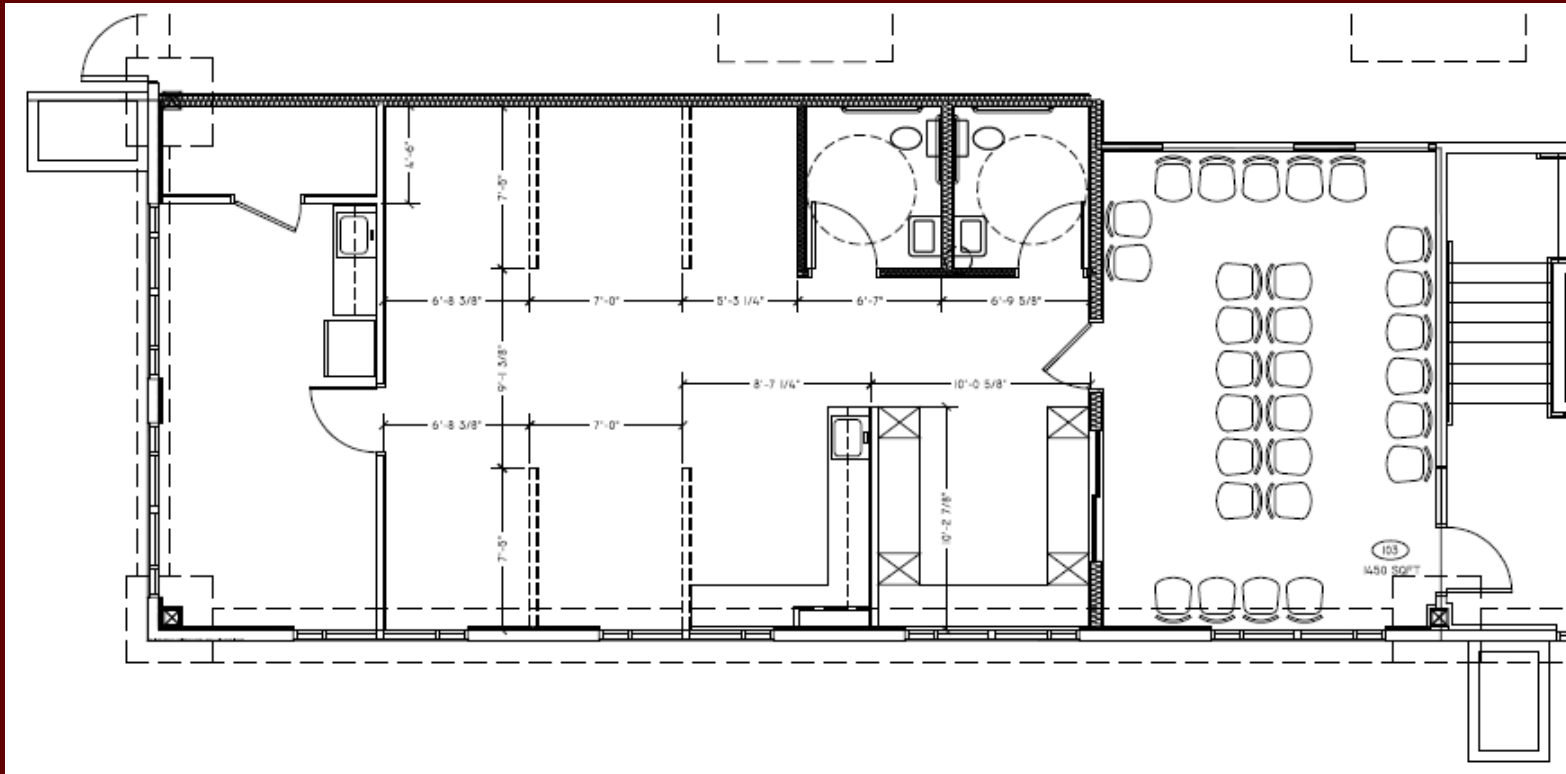
*This information has been secured from sources we believe to be reliable, however, we make no representations or warranties, expressed or implied, as to the accuracy of the information. References to square footage or age are approximate. Buyer must verify the information and bears all risk for any inaccuracies. © 2014 The Ribeiro Companies [www.ribeirocorp.com](http://www.ribeirocorp.com)*

**Project Mgt./Brokerage: Edward G. Yuill**  
**Design/Development: Johnny A. Ribeiro**



The Ribeiro Companies

# 601 SIERRA ROSE DR #103 • RENO, NV 89511



**THE RIBEIRO COMPANIES HAVE SPECIALIZED IN COMMERCIAL PROPERTIES FOR OVER 50 YEARS.**

**EXCLUSIVELY LISTED  
LEASE OPPORTUNITY**

**EDWARD G. YUILL**  
ED.YUILL@RIBEIROCORP.COM

**CALL US TODAY AT  
775.825.7979**



The Ribeiro Companies

**OFFICE HOURS:**  
Monday-Friday  
8:00 AM—5:00 PM

6490 S. McCarran Blvd., Bldg. E  
Reno, NV 89509

[www.ribeirocorp.com](http://www.ribeirocorp.com)

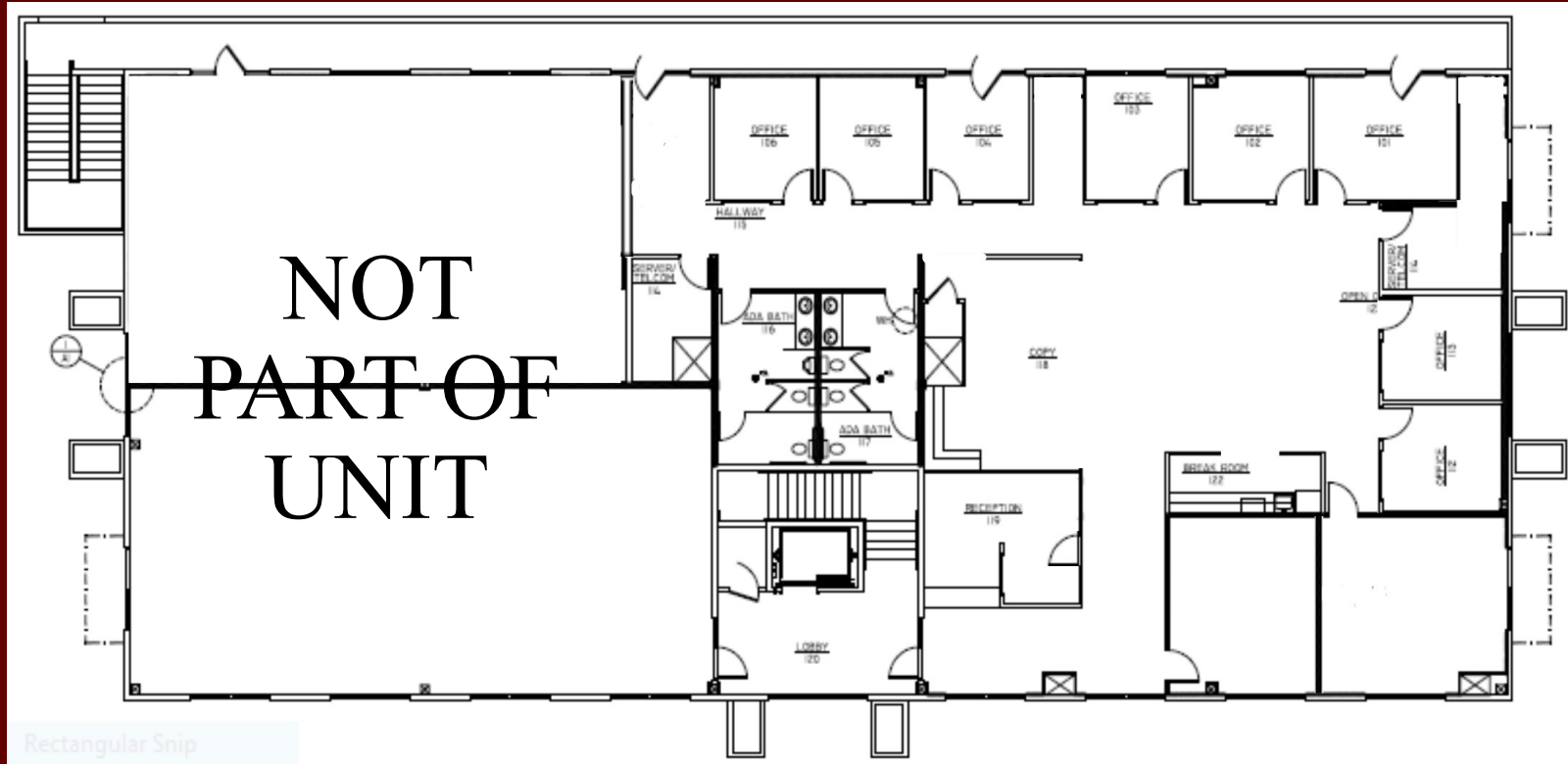
*This information has been secured from sources we believe to be reliable, however, we make no representations or warranties, expressed or implied, as to the accuracy of the information. References to square footage or age are approximate. Buyer must verify the information and bears all risk for any inaccuracies. © 2014 The Ribeiro Companies [www.ribeirocorp.com](http://www.ribeirocorp.com)*

**Project Mgt./Brokerage: Edward G. Yuill**  
**Design/Development: Johnny A. Ribeiro**



The Ribeiro Companies

# 601 SIERRA ROSE DR #203, 204, 205 • RENO, NV 89511



Rectangular Snip

**THE RIBEIRO COMPANIES HAVE SPECIALIZED IN COMMERCIAL PROPERTIES FOR OVER 50 YEARS.**

**EXCLUSIVELY LISTED  
LEASE OPPORTUNITY**

**EDWARD G. YUILL**  
ED.YUILL@RIBEIROCORP.COM

**CALL US TODAY AT  
775.825.7979**



**OFFICE HOURS:**  
Monday-Friday  
8:00 AM—5:00 PM

6490 S. McCarran Blvd., Bldg. E  
Reno, NV 89509

[www.ribeirocorp.com](http://www.ribeirocorp.com)

*This information has been secured from sources we believe to be reliable, however, we make no representations or warranties, expressed or implied, as to the accuracy of the information. References to square footage or age are approximate. Buyer must verify the information and bears all risk for any inaccuracies. © 2014 The Ribeiro Companies [www.ribeirocorp.com](http://www.ribeirocorp.com)*

**Project Mgt./Brokerage: Edward G. Yuill**  
**Design/Development: Johnny A. Ribeiro**



The Ribeiro Companies

# 601 SIERRA ROSE DR #203, 204, 205 • RENO, NV 89511



**THE RIBEIRO COMPANIES HAVE SPECIALIZED IN COMMERCIAL PROPERTIES FOR OVER 50 YEARS.**

**EXCLUSIVELY LISTED  
LEASE OPPORTUNITY**

**EDWARD G. YUILL**  
ED.YUILL@RIBEIROCORP.COM

**CALL US TODAY AT  
775.825.7979**



**OFFICE HOURS:**  
Monday-Friday  
8:00 AM—5:00 PM

6490 S. McCarran Blvd., Bldg. E  
Reno, NV 89509

**www.ribeirocorp.com**

*This information has been secured from sources we believe to be reliable, however, we make no representations or warranties, expressed or implied, as to the accuracy of the information. References to square footage or age are approximate. Buyer must verify the information and bears all risk for any inaccuracies. © 2014 The Ribeiro Companies www.ribeirocorp.com*

**Project Mgt./Brokerage: Edward G. Yuill**  
**Design/Development: Johnny A. Ribeiro**



The Ribeiro Companies

# 601 SIERRA ROSE DR #203, 204, 205 • RENO, NV 89511



**THE RIBEIRO COMPANIES HAVE SPECIALIZED IN COMMERCIAL PROPERTIES FOR OVER 50 YEARS.**

**EXCLUSIVELY LISTED  
LEASE OPPORTUNITY**

**EDWARD G. YUILL**  
ED.YUILL@RIBEIROCORP.COM

**CALL US TODAY AT  
775.825.7979**



The Ribeiro Companies

**OFFICE HOURS:**  
Monday-Friday  
8:00 AM—5:00 PM

6490 S. McCarran Blvd., Bldg. E  
Reno, NV 89509

**www.ribeirocorp.com**

*This information has been secured from sources we believe to be reliable, however, we make no representations or warranties, expressed or implied, as to the accuracy of the information. References to square footage or age are approximate. Buyer must verify the information and bears all risk for any inaccuracies. © 2014 The Ribeiro Companies www.ribeirocorp.com*

**Project Mgt./Brokerage: Edward G. Yuill**  
**Design/Development: Johnny A. Ribeiro**