



606 MARSHALL AVE EL CAJON CA 92020



TYPE: Industrial / Retail / Showroom

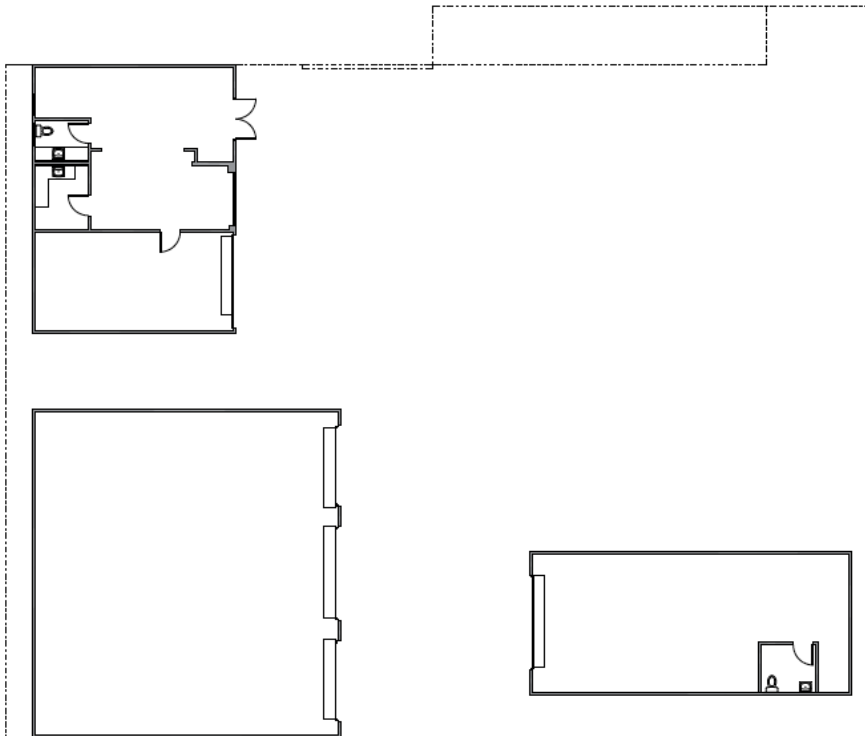
PRICE: Negotiable NNN (\$.34)

DESIGN: See Layout

SIZE: 4,500 Sq Ft + 8,000 Yard

USE: Industrial / Auto / Storage

EASY TOUR - JUST CALL



#### HIGHLIGHTS:

- Three Buildings
  - Main Building can increase Warehouse
- Private Fenced & Gated Yard (8,000 sf)
- Two Driveways
- 200 Amp Service
- Multiple Roll Doors
- Front Loaders



606 MARSHALL AVE EL CAJON CA 92020

