

Building For Sale

Central Mid County Location – Page Warson Industrial

14,658 sf on 1.03 acres with 2,000+/- sf updated office space / 3 docks / 1 ramped door / 24 Parking Space / Fire sprinklers in warehouse / 4 restrooms / kitchen-breakroom / conference room / 4 private offices / fiber served / all new LED lighting / partially fenced interior / excellent truck access

Available Immediately
Racking in place

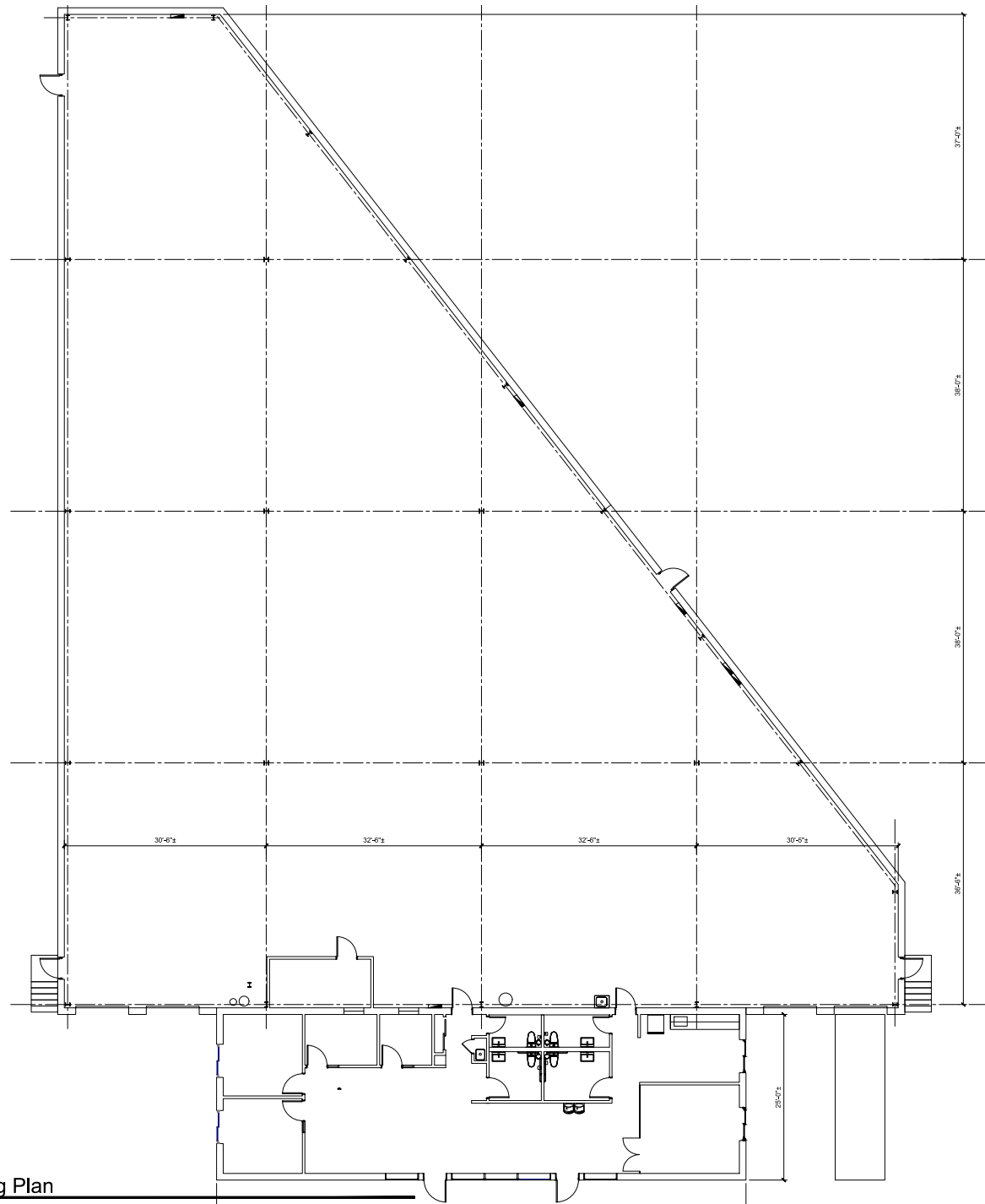
Call for Pricing




Greg Yawitz
Keat Properties, LLC
Owner/Broker
314-994-7676 x25

Information gathered from sources deemed reliable. No warranty is made or implied as to accuracy.





 Existing Plan
1/8" = 1'-0"

