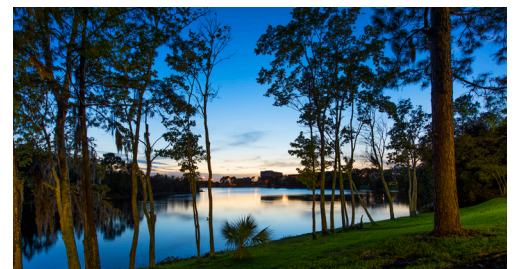




Upscale Office/Flex/ Distribution Park

- Grade-level and dock-high overhead doors
- Campus style setting with lush landscaping
- Professionally managed
- Zoned IP (Industrial Park) - City of Orlando
- Ample parking at 3.24/1,000 sf
- Located one (1) mile from the front door of the Orlando International Airport (MCO)



For further information

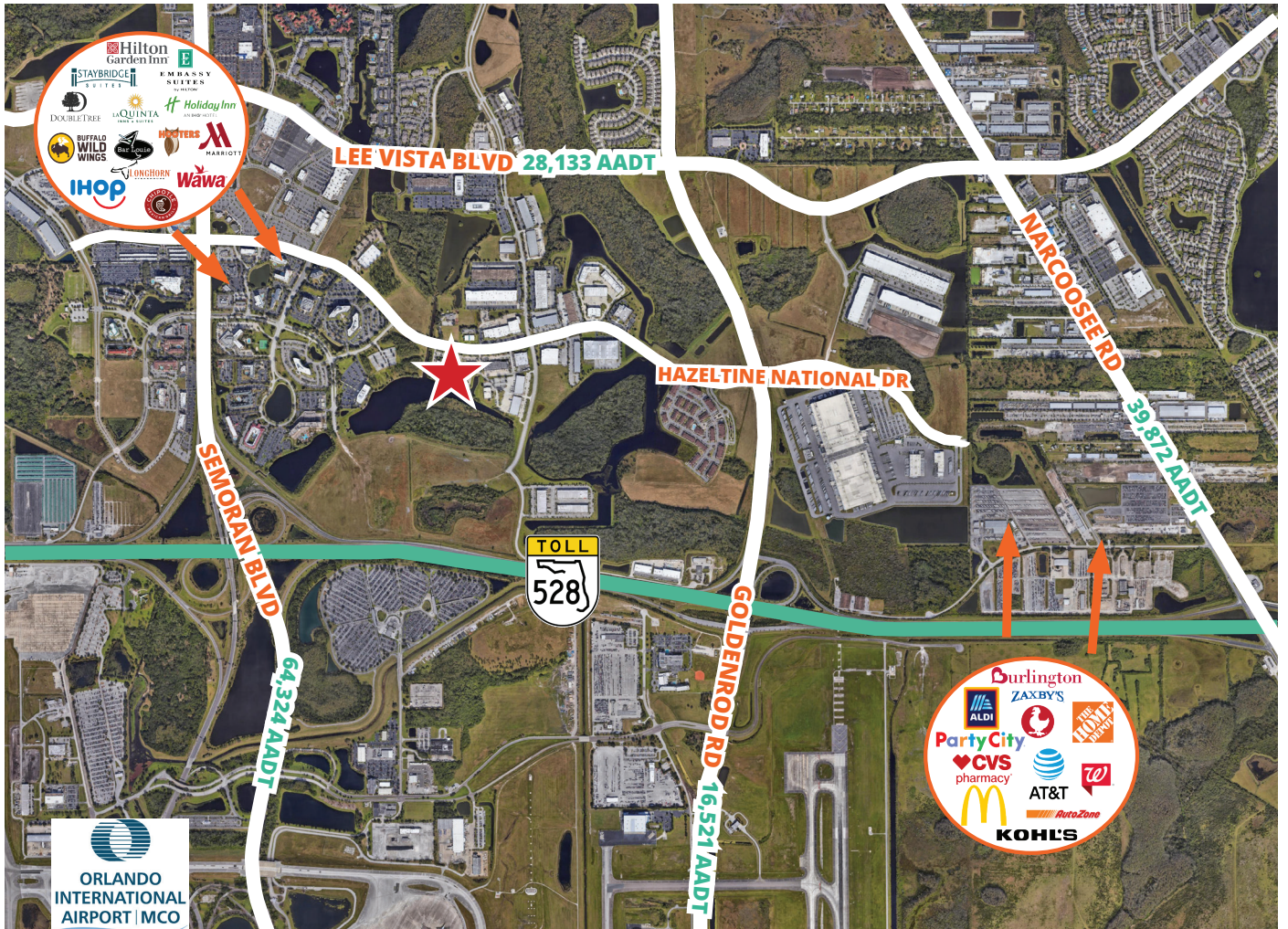
Lisa Bailey, SIOR
Principal
+1 407 440 6645
lisa.bailey@avisonyoung.com

Emily Zinaich
Sr Vice President
+1 407 440 6641
emily.zinaich@avisonyoung.com

avisonyoung.com

Office/Flex/Distribution Space

Lake Point Business Park
 6200-6360 Hazeltine National Dr
 Orlando, FL 32822



For further information

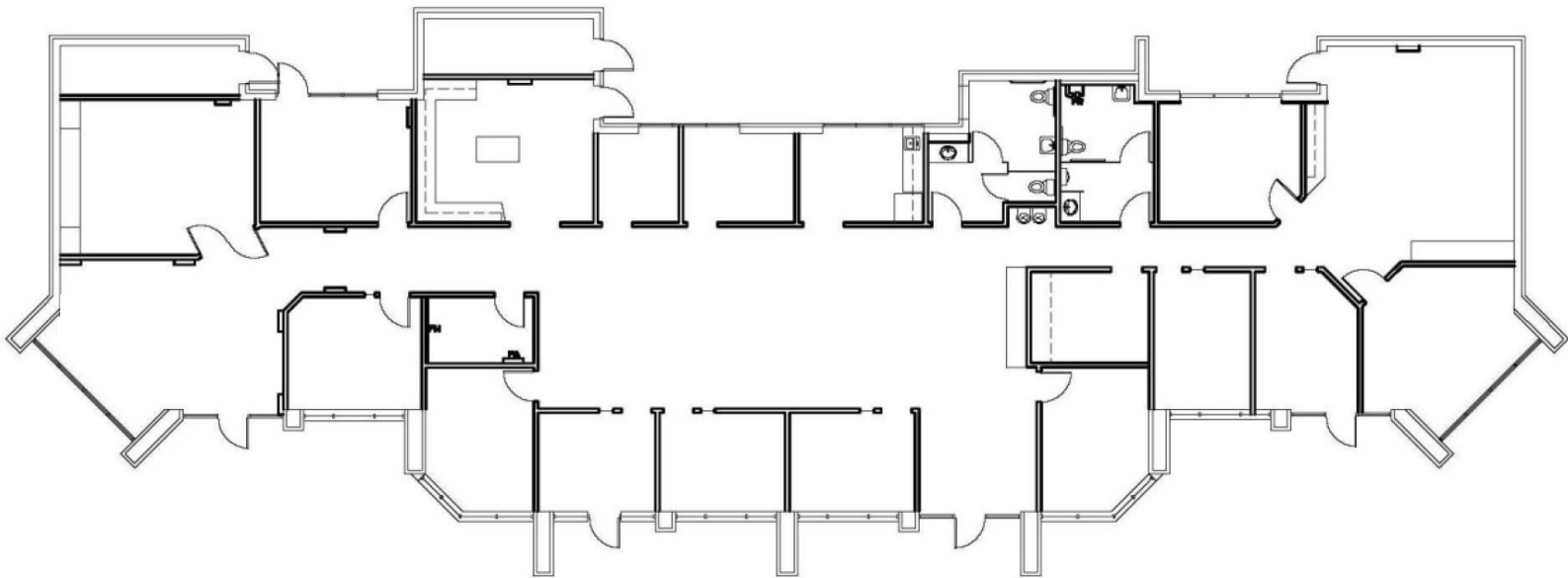
Lisa Bailey, SIOR
 Principal
 +1 407 440 6645
 lisa.bailey@avisonyoung.com

Emily Zinaich
 Sr Vice President
 +1 407 440 6641
 emily.zinaich@avisonyoung.com

avisonyoung.com

Building 6200
Suite 100- 6,740± SF
100% Office Space

Lake Point Business Park
6200-6360 Hazeltine National Dr
Orlando, FL 32822



**For further
information**

Lisa Bailey, SIOR
Principal
+1 407 440 6645
lisa.bailey@avisonyoung.com

Emily Zinaich
Sr Vice President
+1 407 440 6641
emily.zinaich@avisonyoung.com

avisonyoung.com

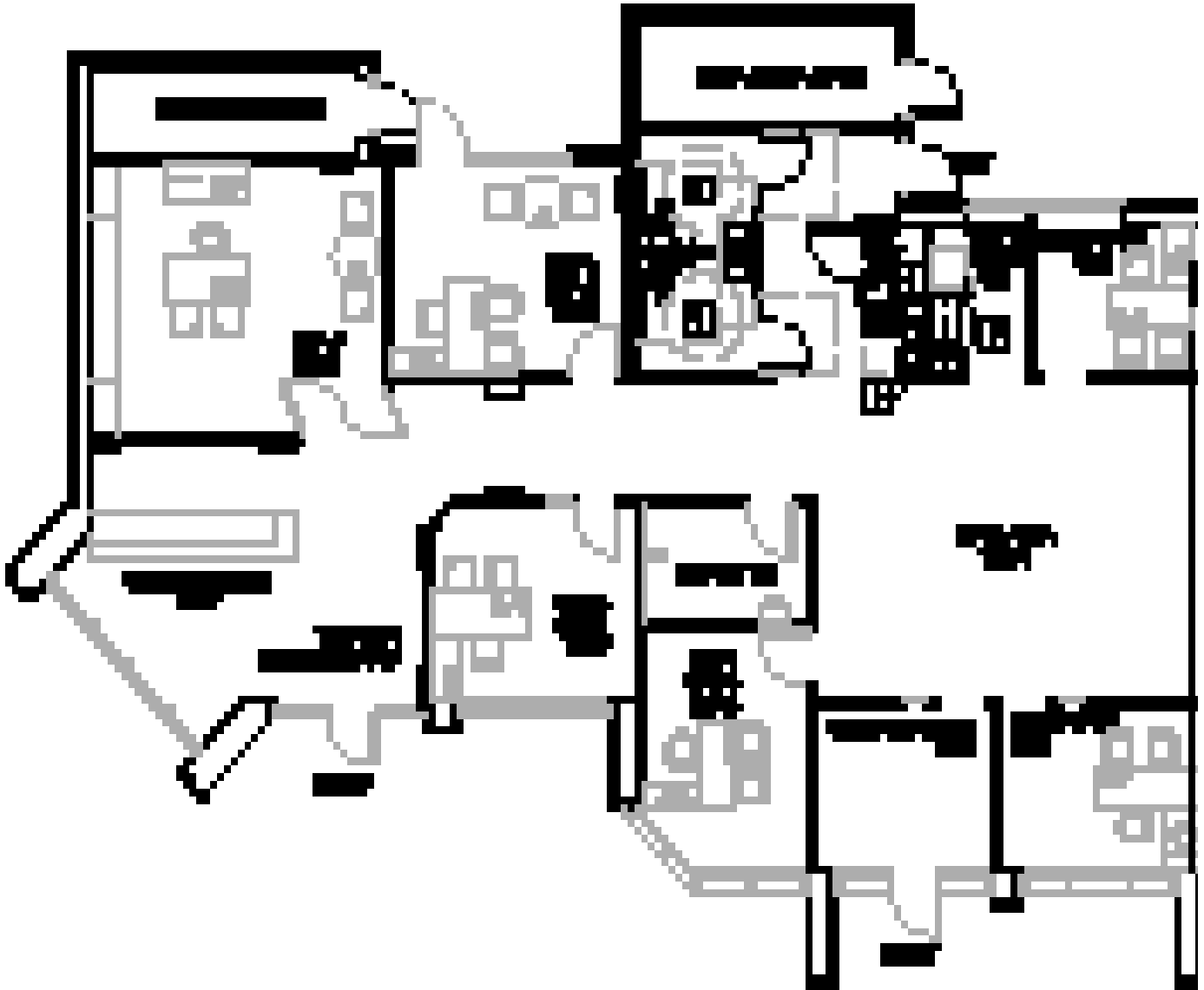
Building 6200
Suite 100 - 6,740± SF
Property Pictures

Lake Point Business Park
6200-6360 Hazeltine National Dr
Orlando, FL 32822



Building 6200
Suite 100
3,370± SF

Lake Point Business Park
6200-6360 Hazeltine National Dr
Orlando, FL 32822



**For further
information**

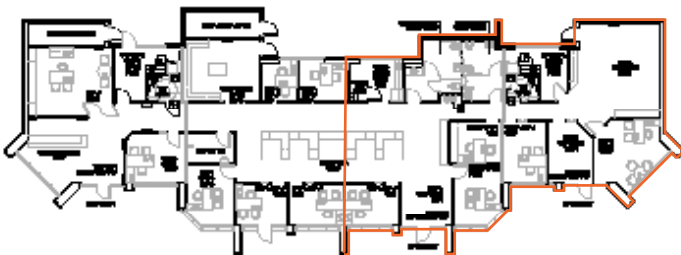
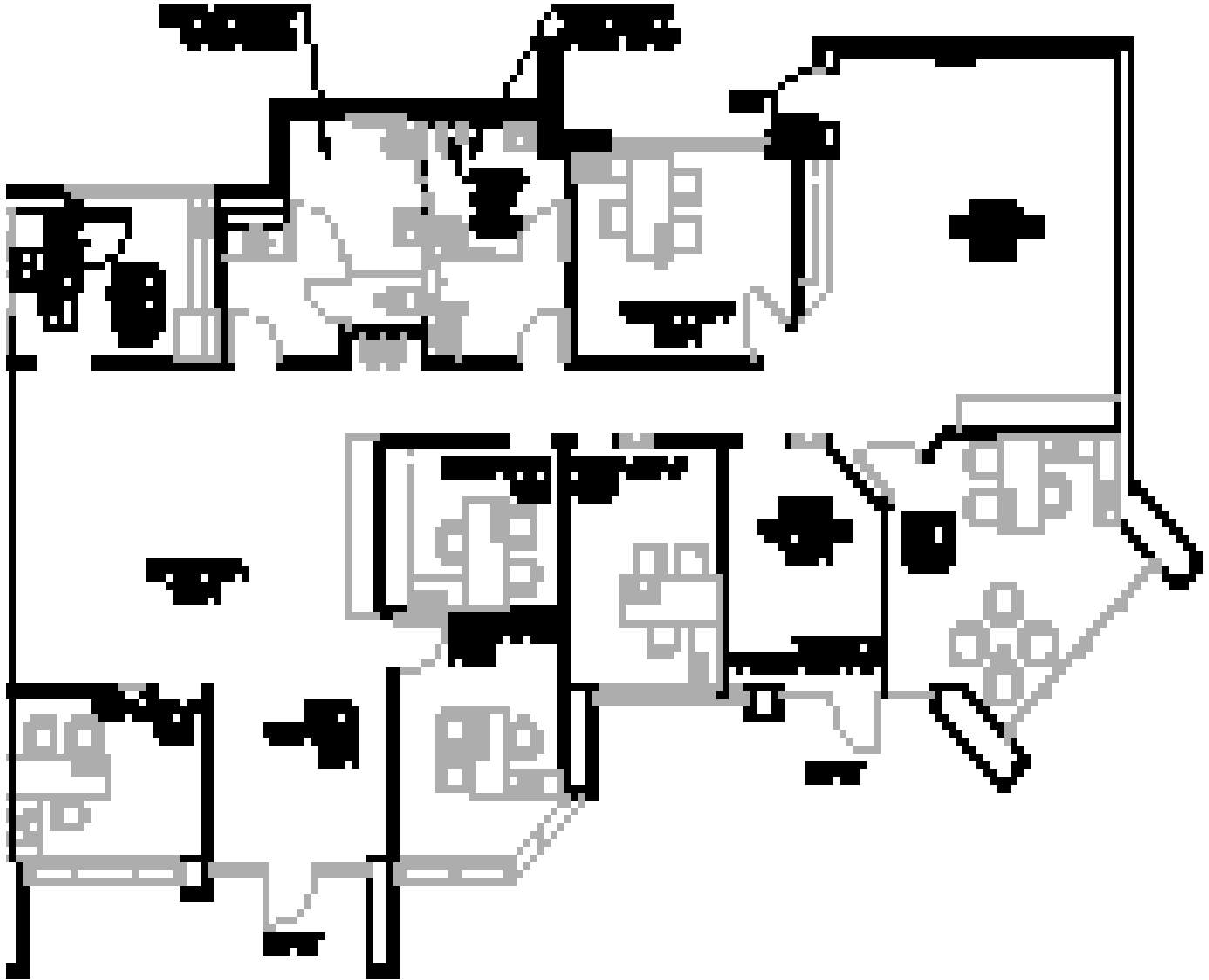
Lisa Bailey, SIOR
Principal
+1 407 440 6645
lisa.bailey@avisonyoung.com

Emily Zinaich
Sr Vice President
+1 407 440 6641
emily.zinaich@avisonyoung.com

avisonyoung.com

Building 6200
Suite 100
3,370± SF

Lake Point Business Park
6200-6360 Hazeltine National Dr
Orlando, FL 32822



**For further
information**

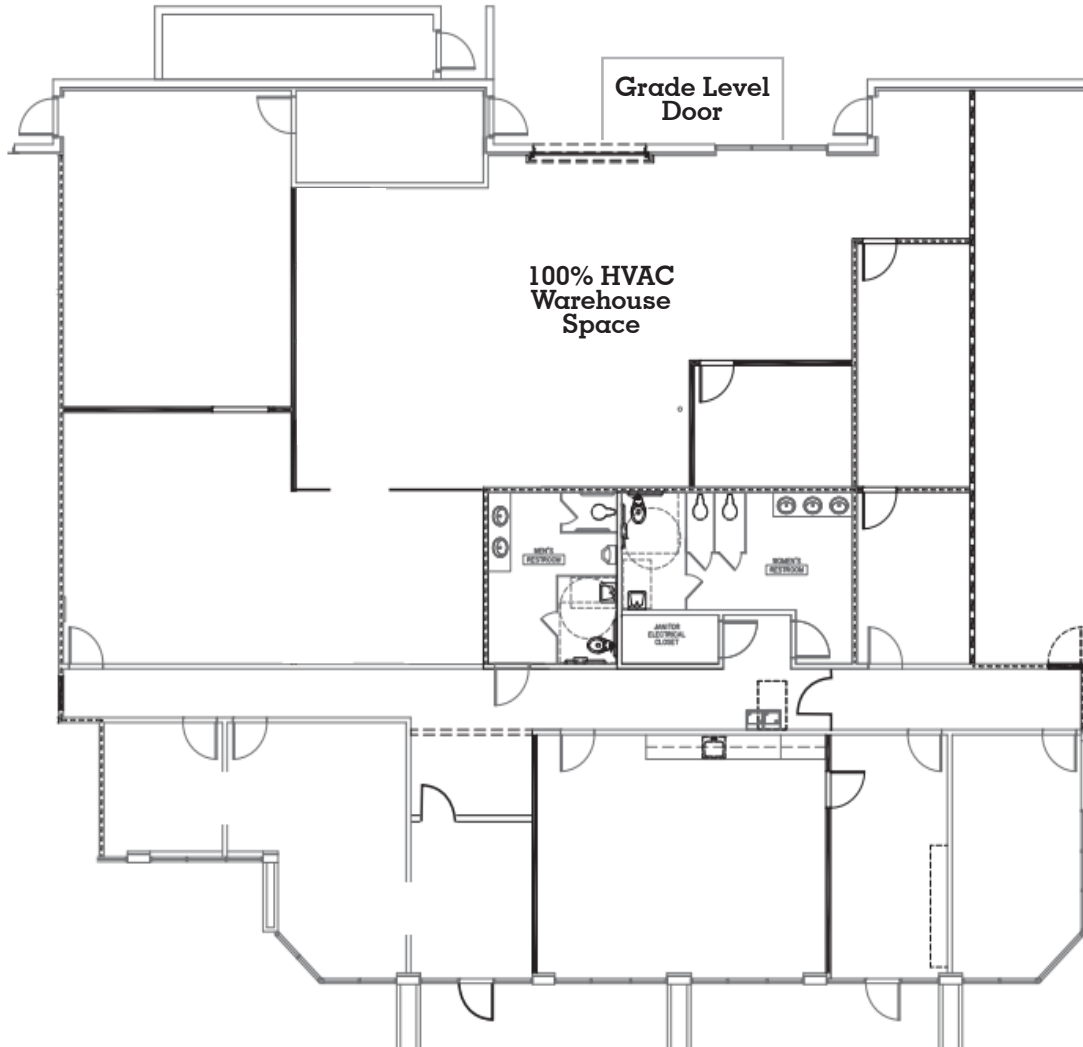
Lisa Bailey, SIOR
Principal
+1 407 440 6645
lisa.bailey@avisonyoung.com

Emily Zinaich
Sr Vice President
+1 407 440 6641
emily.zinaich@avisonyoung.com

avisonyoung.com

Building 6220
Suite 112 - 6,459± SF
100% Office/Warehouse Space
12' Ceiling
Available 01/01/2026

Lake Point Business Park
6200-6360 Hazeltine National Dr
Orlando, FL 32822



**For further
information**

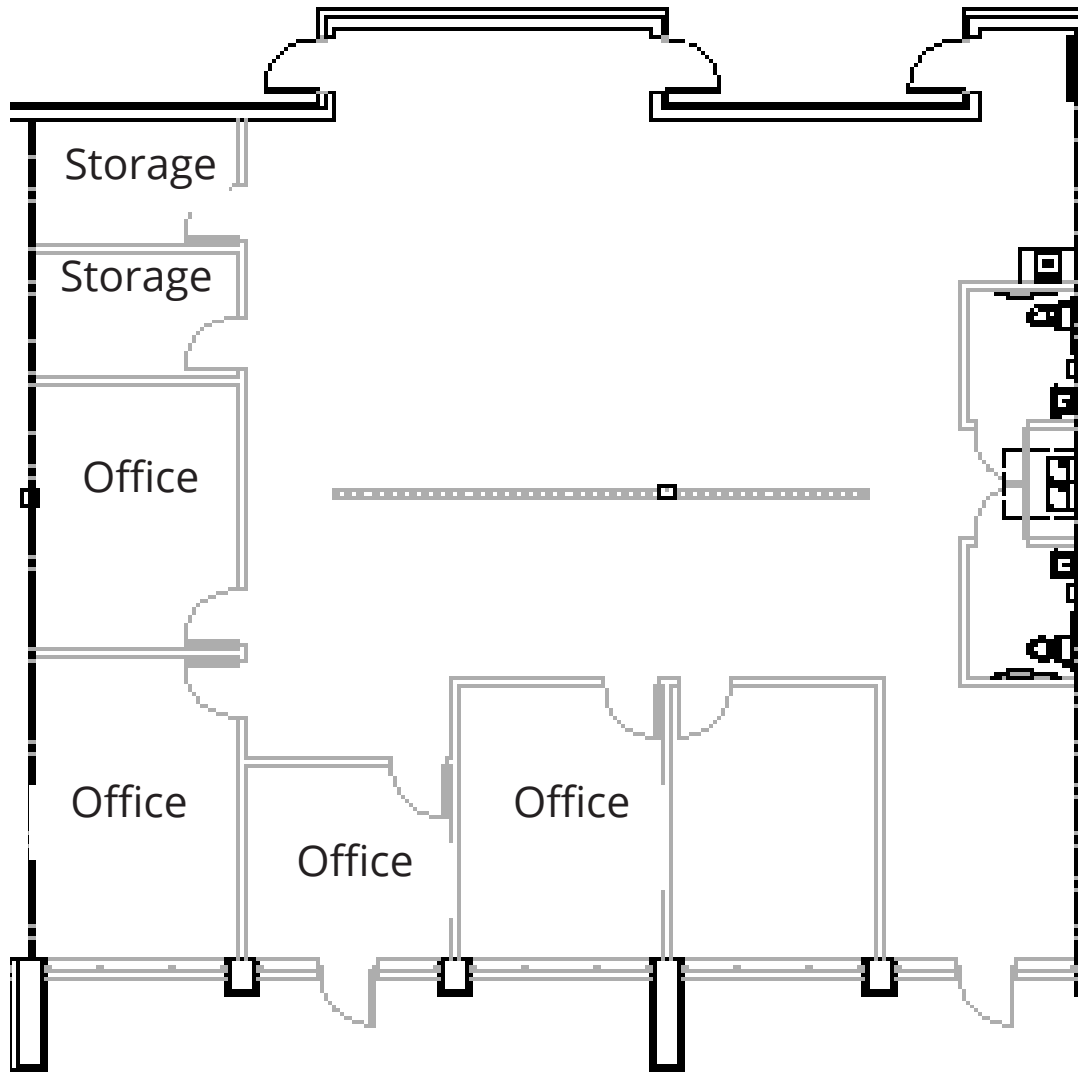
Lisa Bailey, SIOR
Principal
+1 407 440 6645
lisa.bailey@avisonyoung.com

Emily Zinaich
Sr Vice President
+1 407 440 6641
emily.zinaich@avisonyoung.com

avisonyoung.com

Building 6220
Suite 118 - 3,544± SF
100% Office Space

Lake Point Business Park
6200-6360 Hazeltine National Dr
Orlando, FL 32822



**For further
information**

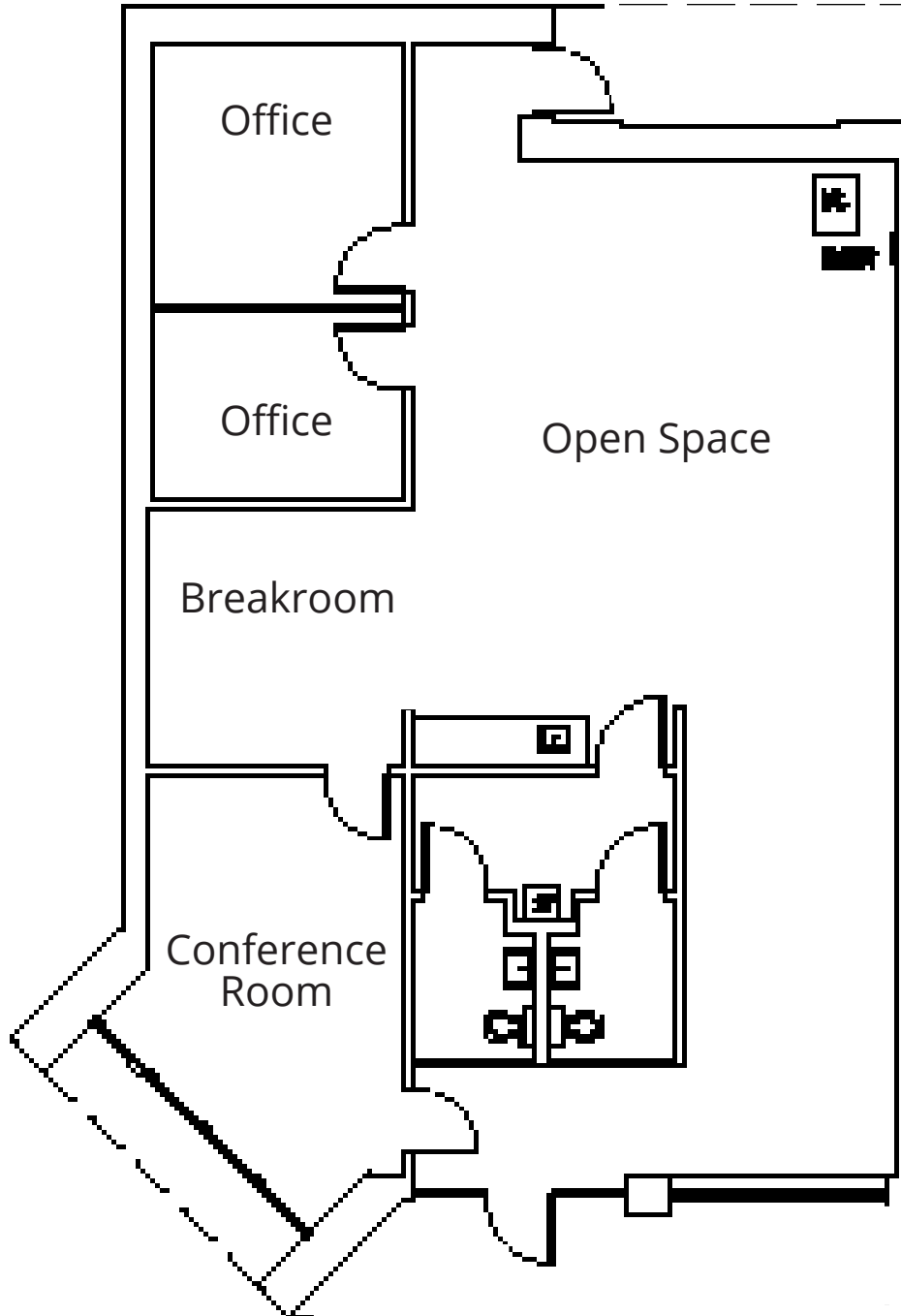
Lisa Bailey, SIOR
Principal
+1 407 440 6645
lisa.bailey@avisonyoung.com

Emily Zinaich
Sr Vice President
+1 407 440 6641
emily.zinaich@avisonyoung.com

avisonyoung.com

Building 6220
Suite 120 - 2,145± SF
100% Office Space

Lake Point Business Park
6200-6360 Hazeltine National Dr
Orlando, FL 32822



**For further
information**

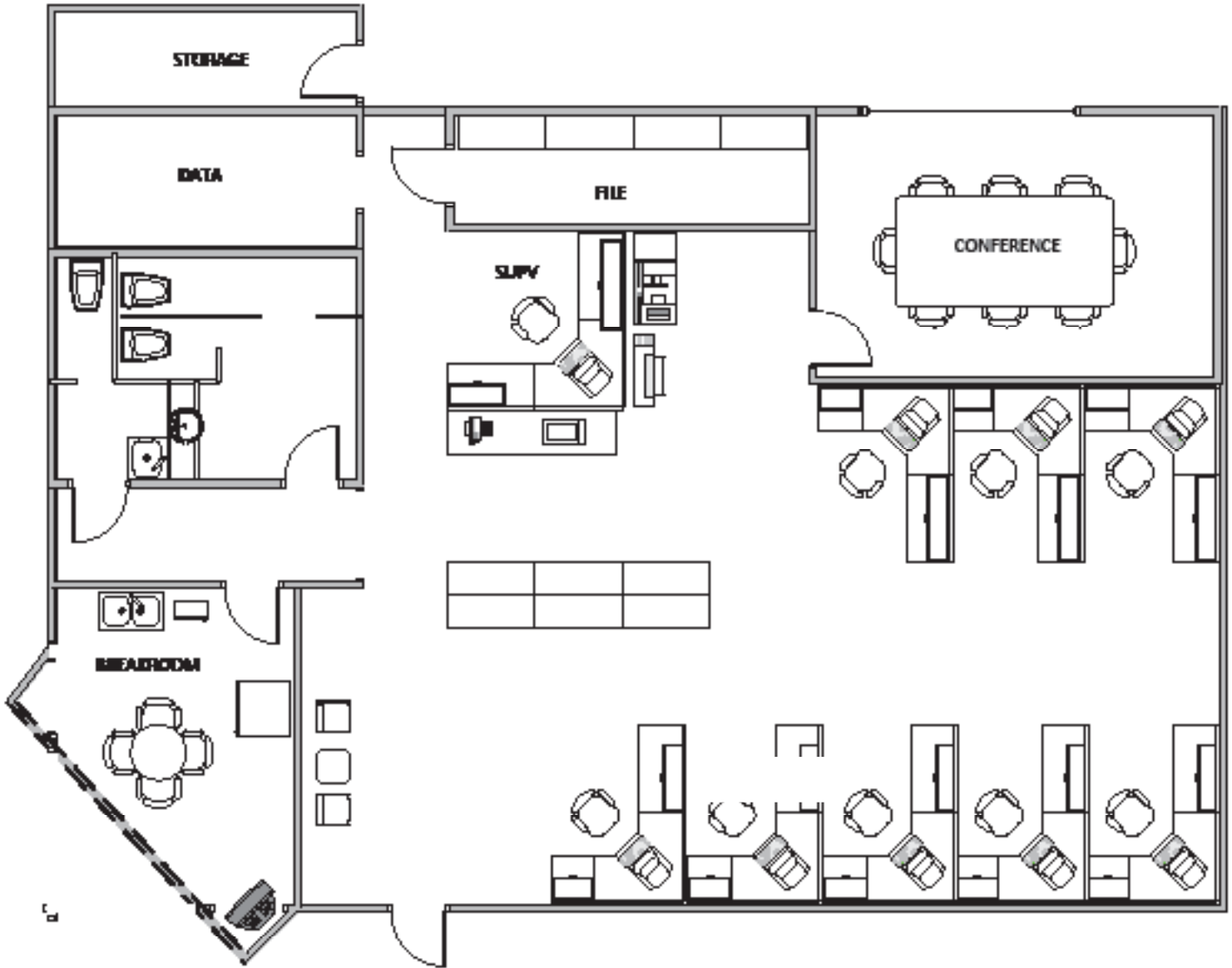
Lisa Bailey, SIOR
Principal
+1 407 440 6645
lisa.bailey@avisonyoung.com

Emily Zinaich
Sr Vice President
+1 407 440 6641
emily.zinaich@avisonyoung.com

avisonyoung.com

Building 6250
Suite 116 - 2,606± SF
100% Office Space

Lake Point Business Park
6200-6360 Hazeltine National Dr
Orlando, FL 32822



**For further
information**

Lisa Bailey, SIOR
Principal
+1 407 440 6645
lisa.bailey@avisonyoung.com

Emily Zinaich
Sr Vice President
+1 407 440 6641
emily.zinaich@avisonyoung.com

avisonyoung.com