

EAST LAUDERDALE WAREHOUSES

4760-4875 NE 12 AVE, OAKLAND PARK, FL 33334

PROPERTY SUMMARY

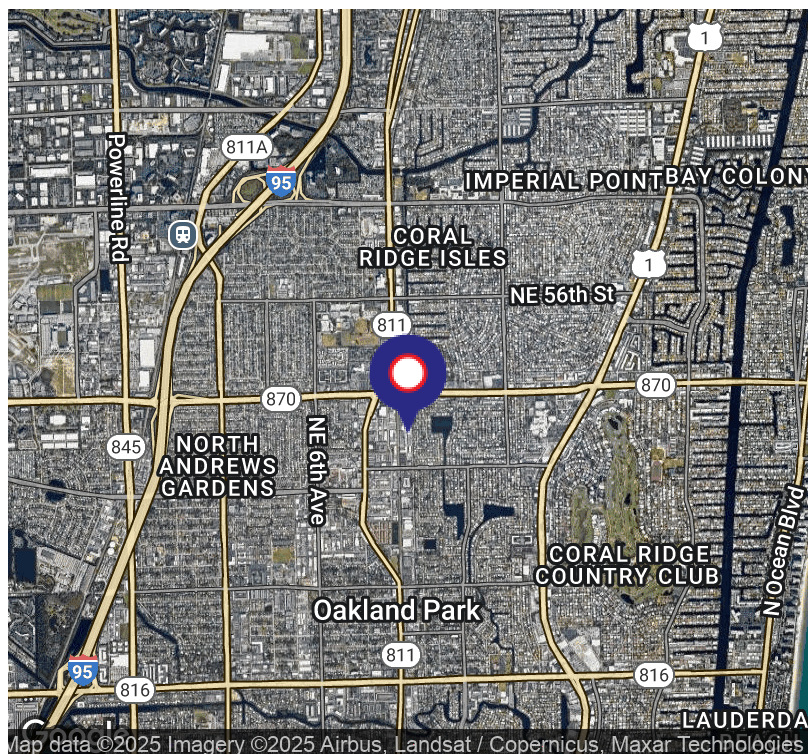


PROPERTY DESCRIPTION

The East Lauderdale Warehouses are small bay warehouses in Oakland Park. Built in 1970, there are 6 buildings totaling 53,285 SF with 35 units ranging in size from 1,200 SF to 1,800 SF, with one storage bay at 775 SF. The small bay warehouses include a small, fully air-conditioned office and private restroom with overhead door sizes ranging from 8' x 10' up to 10' x 12'. This multi-tenant industrial property is ideally located to get anywhere in Broward County, as it is situated just east of Dixie Highway and south of Commercial Boulevard and less than 5 minutes from the I-95 Expressway, and is zoned B-3 for Commercial Industrial.

PROPERTY HIGHLIGHTS

- 6 Building totaling 53,285 SF
- 35 units between 1,200 SF - 1,800 SF
- Fully air-conditioned offices
- 8' x 10' up to 10' x 12' grade level overhead doors
- Less than 5 minutes from I-95 Expressway
- Zoned B-3 for Commercial Industrial



HALEY PRESSER

Property Manager / Sales Associate
Direct: 954.485.9200 | Cell: 954.254.5396
Haley@levyrai.com

ANGIE WEAVER

Lauderdale Lakes and Lauderdale Manager
Direct: 954.485.9200 | Cell: 917.645.2339
angie@levyrai.com



EAST LAUDERDALE WAREHOUSES

4760-4875 NE 12 AVE, OAKLAND PARK, FL 33334

ADDITIONAL PHOTOS



HALEY PRESSER

Property Manager / Sales Associate
Direct: 954.485.9200 | Cell: 954.254.5396
Haley@levyrai.com

ANGIE WEAVER

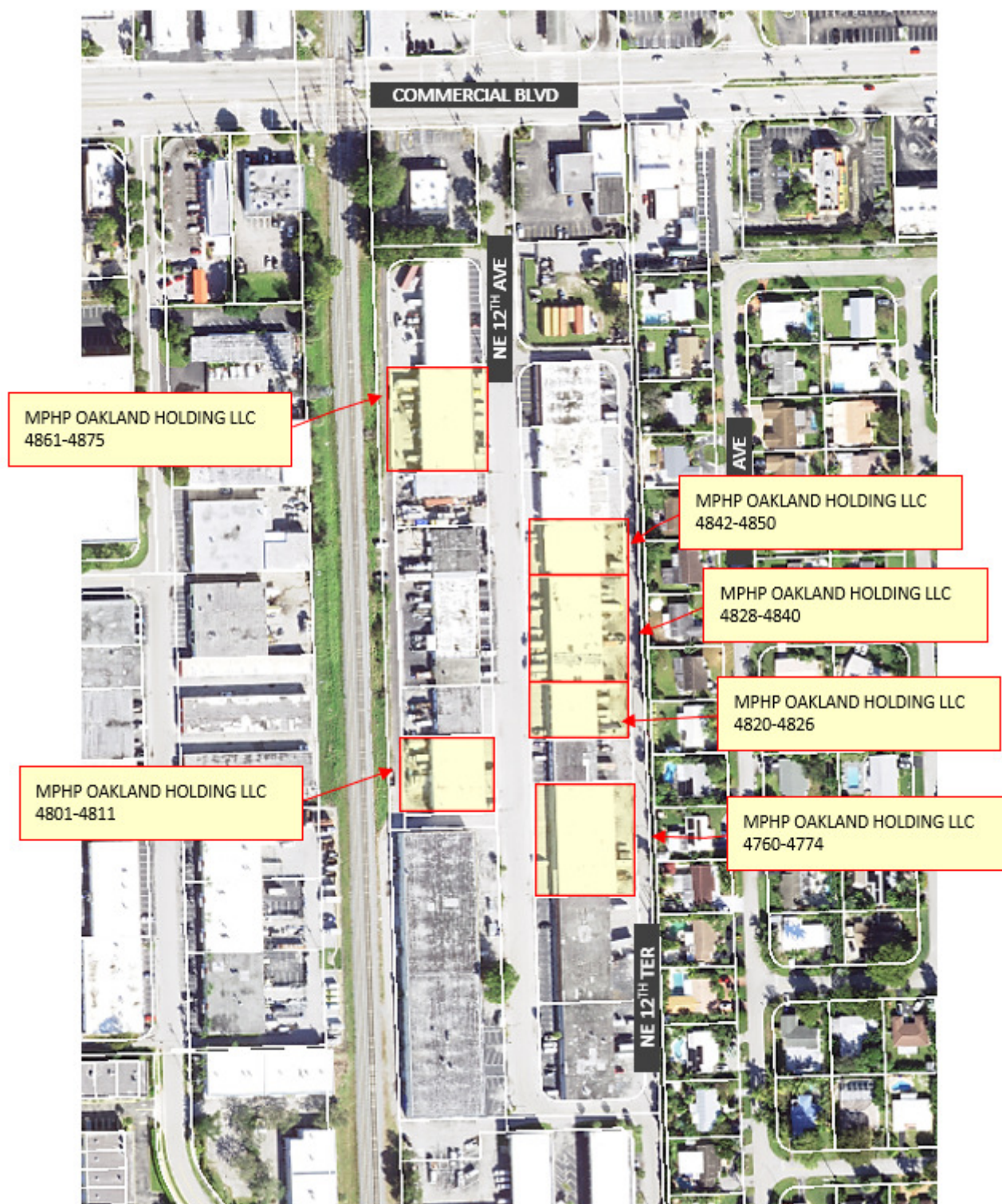
Lauderdale Lakes and Lauderdale Manager
Direct: 954.485.9200 | Cell: 917.645.2339
angie@levyrai.com



EAST LAUDERDALE WAREHOUSES

4760-4875 NE 12 AVE, OAKLAND PARK, FL 33334

SITE PLAN



HALEY PRESSER

Property Manager / Sales Associate
Direct: 954.485.9200 | Cell: 954.254.5396
Haley@levyrai.com

ANGIE WEAVER

Lauderdale Lakes and Lauderdale Manager
Direct: 954.485.9200 | Cell: 917.645.2339
angie@levyrai.com

