

**18 BROAD ST**  
Charleston, SC 29401

**Executive  
Offices  
FOR LEASE**



**Contact us:**

**Jeremy Willits**  
Senior Vice President  
+1.843.270.9205  
[jeremy.willits@harborcommercialpartners.com](mailto:jeremy.willits@harborcommercialpartners.com)

**Gerry Schauer, CCIM**  
Partner  
+1.843.364.2055  
[gerry.schauer@harborcommercialpartners.com](mailto:gerry.schauer@harborcommercialpartners.com)

# EXECUTIVE SUITES & OFFICES

## Property Description

This iconic Charleston landmark that will inspire your employees and impress your clients. These are well appointed, spacious executive suites on the second and third floors of the historic People's Building.

We are offering a variety of lockable, private offices for lease featuring high ceilings, conference rooms, and numerous amenities. The Senior and Executive options have large windows with views of Broad, State Streets and beyond.

If you ever wanted to have an office on Broad Street, or simply a satellite office downtown as a place to hold meetings, consider 18 Broad. These executive offices are newly renovated for professionals in law, finance, architecture, and similar professional services.

## Offering

SPACE TYPE	SIZE	LEASE RATE	LEASE TYPE
JUNIOR	235 RSF	\$1,295/MONTH	FULL SERVICE
SENIOR	335 RSF	\$1,395/MONTH	FULL SERVICE
SENIOR - 3RD FLOOR	335 RSF	\$1,795/MONTH	FULL SERVICE
EXECUTIVE	550 RSF	\$2,395/MONTH	FULL SERVICE
TEAM SPACE		NEGOTIABLE	FULL SERVICE

## Executive Offices Include:

- Shared Conference rooms & Board rooms
- Dedicated mailing address and mailbox
- Kitchen with complimentary espresso, coffee, tea
- Ethernet plug-ins & high-speed WIFI
- Consistent cleaning and sanitizing of all public spaces
- Flexible lease lengths
- Limited Parking available at nearby garages at market rates

# FLOOR PLANS - EXECUTIVE SUITES

## 2nd Floor

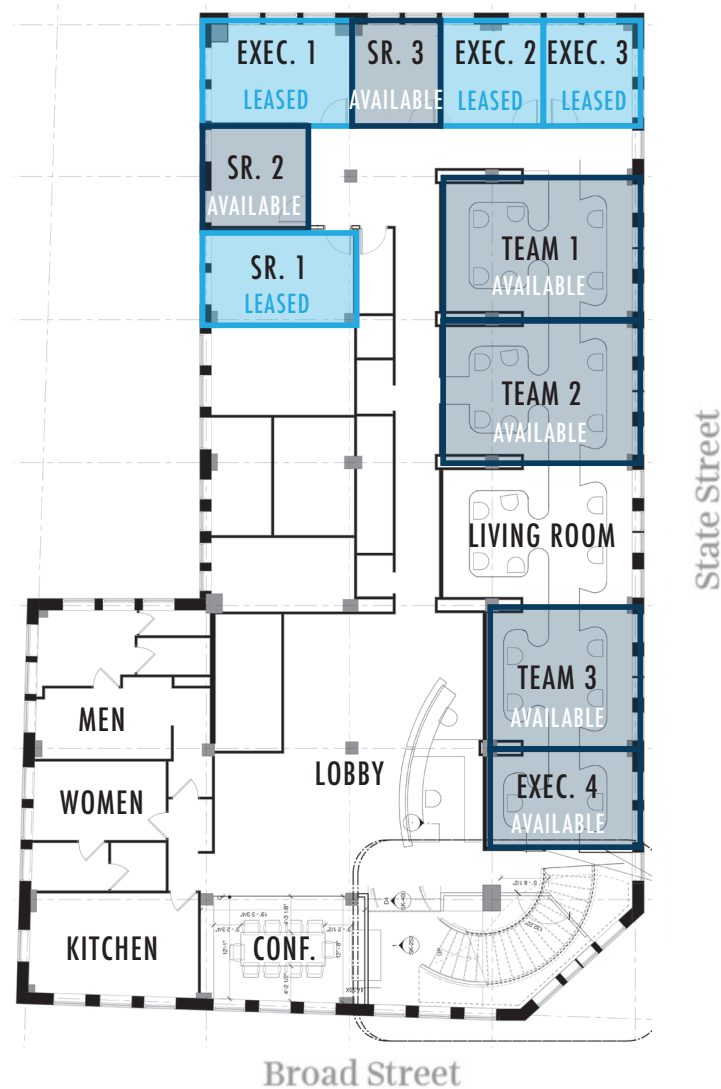


**Contact us:**



# FLOOR PLANS - SENIOR SUITES

## 3rd Floor



# LOCATION



**CENTER OF HISTORIC DOWNTOWN CHARLESTON**  
Located within the People's Building, 18 Broad Street was constructed in 1910, and is known as Historic Charleston's "first skyscraper." It is an iconic Charleston landmark that will inspire your employees and impress your clients.



**Contact us:**

Jeremy Willits  
Senior Vice President  
+1.843.270.9205  
jeremy.willits@harborcommercialpartners.com

Gerry Schauer, CCIM  
Partner  
+1.843.364.2055  
gerry.schauer@harborcommercialpartners.com

# AMENITIES

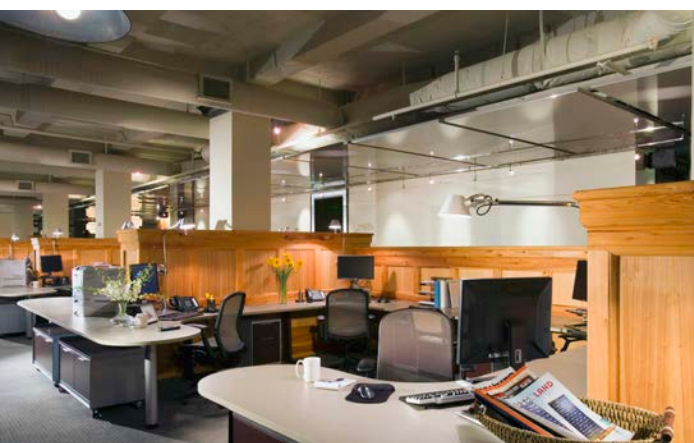


**Contact us:**

Jeremy Willits  
 Senior Vice President  
 +1.843.270.9205  
 jeremy.willits@harborcommercialpartners.com

Gerry Schauer, CCIM  
 Partner  
 +1.843.364.2055  
 gerry.schauer@harborcommercialpartners.com





Contact us:

Jeremy Willits  
Senior Vice President  
+1.843.270.9205  
[jeremy.willits@harborcommercialpartners.com](mailto:jeremy.willits@harborcommercialpartners.com)

Gerry Schauer, CCIM  
Partner  
+1.843.364.2055  
[gerry.schauer@harborcommercialpartners.com](mailto:gerry.schauer@harborcommercialpartners.com)





Contact us:

Jeremy Willits  
Senior Vice President  
+1.843.270.9205  
jeremy.willits@harborcommercialpartners.com

Gerry Schauer, CCIM  
Partner  
+1.843.364.2055  
gerry.schauer@harborcommercialpartners.com



**18 BROAD ST**  
Charleston, SC 29401



Contact us:

146 Williman Street, Units 300 & 400  
Charleston, SC 29403

[www.harborcommercialpartners.com](http://www.harborcommercialpartners.com)

+1.843.994.7198



**Jeremy Willits**

Senior Vice President

+1.843.270.9205

[jeremy.willits@harborcommercialpartners.com](mailto:jeremy.willits@harborcommercialpartners.com)



**Gerry Schauer, CCIM**

Partner

+1.843.364.2055

[gerry.schauer@harborcommercialpartners.com](mailto:gerry.schauer@harborcommercialpartners.com)

The information contained herein has been given to us by sources we deem reliable but we make no guarantees. All information should be verified prior to purchase or lease.