

OPA LOCKA YARD AVAILABLE FOR LEASE

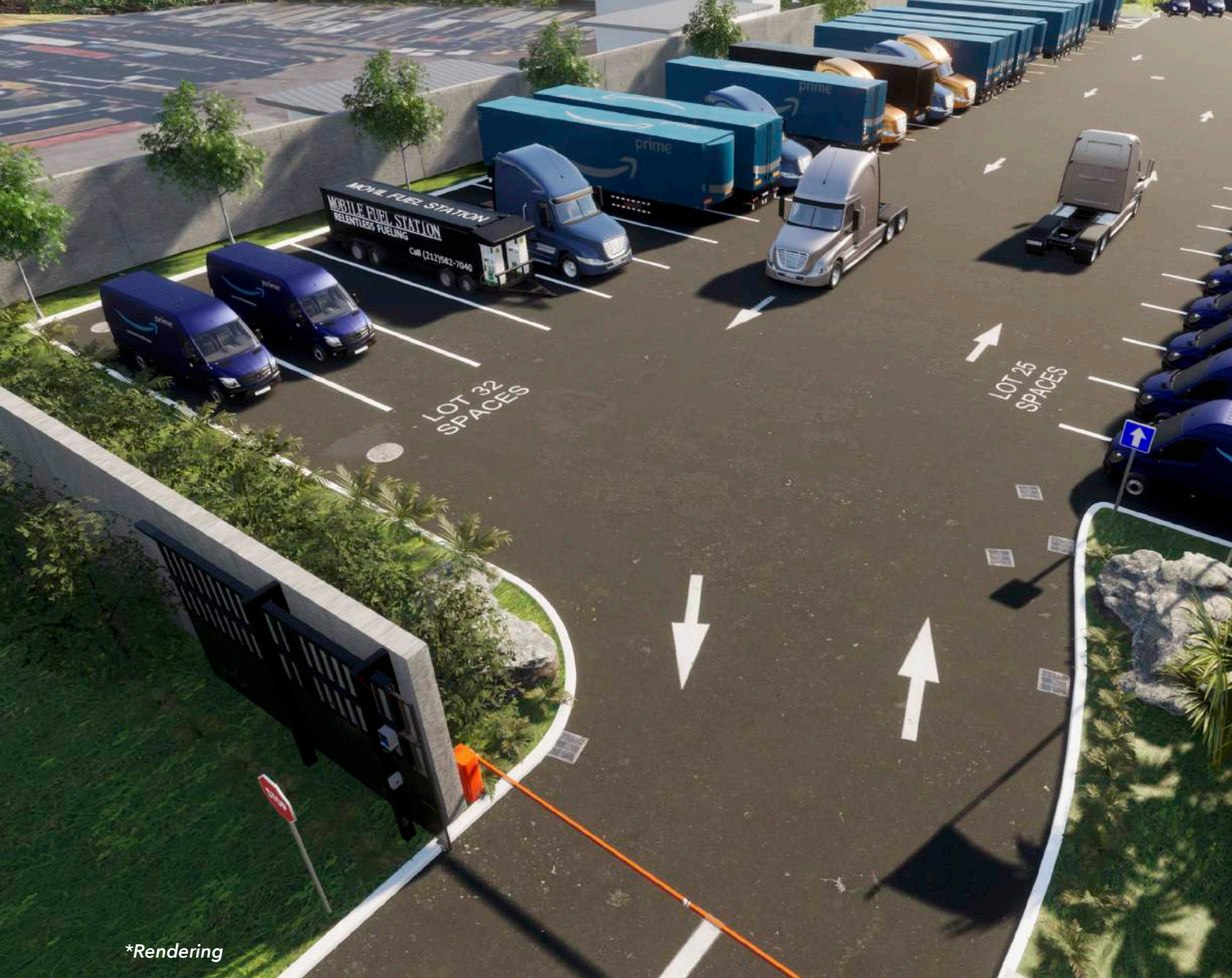
1.7 Acres Total

Small Office, Fenced, and Secured

Pat McBride, SIOR, Esq.
pmcbride@comreal.com
(305) 619-2937

Industrial Team
industrialteam@comreal.com
(786) 433-2380





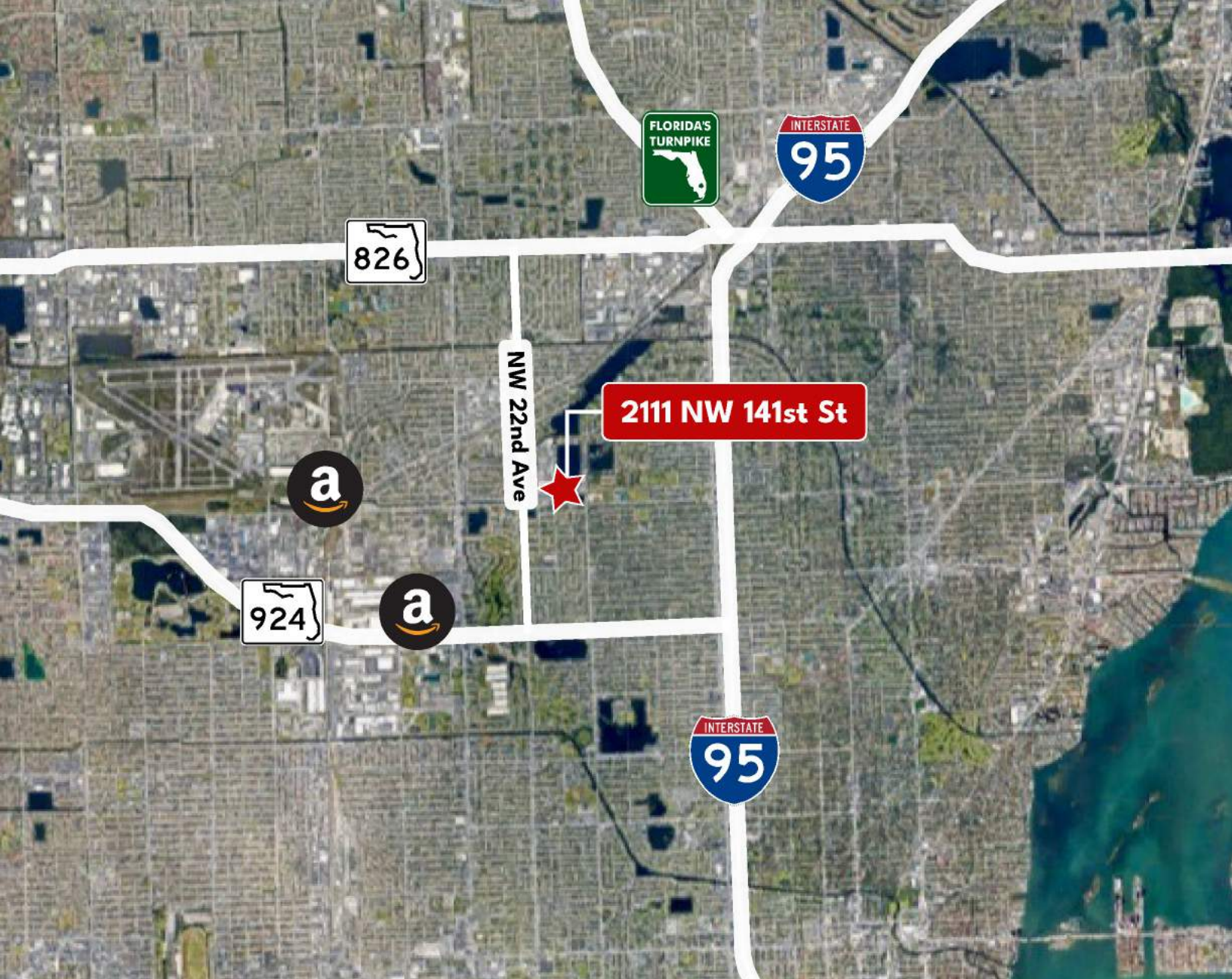
*Rendering

PROPERTY OVERVIEW

- **Size:** 1.7 acres
- Fenced and secure
- Electronic entrance gate
- Office with bathrooms on site
- **Zoned** I-1 City of Opa Locka
- Pricing: Inquire

PROPERTY LOCATION

- DISTANCE TO:**
- I-95: <1 mile
 - Gratigny (924): 1.4 miles
 - Palmetto Expressway (826): 3 miles
 - Miami International Airport: 9 miles
 - Port Miami: 11 miles



For Leasing Inquiries, Contact:

Pat McBride, SIOR, Esq.
pmcbride@comreal.com
(305) 619-2937

Industrial Team
industrialteam@comreal.com
(786) 433-2380

ComReal Miami - Doral, LLC
3470 NW 82nd Ave, Suite 605. Doral, FL 33122



Disclosure: All information provided herein is obtained from sources that we believe to be reliable, but has not been verified for accuracy or completeness. Any reliance on this information is solely at your own risk. Terms and conditions or change in price are subject to change without notice.