

FOR LEASE

CENTER COURT PROFESSIONAL BUILDING

±32,000 SF AVAILABLE



**1373 Center Court Dr
Covina, CA 91724**

CHRISTOPHER LARIMORE
clarimore@lee-associates.com
626.240.2788
License ID 01314464

VINCENT MOLITOR
vmolitor@lee-associates.com
626.240.2787
License ID 01295360

CHRIS JOHNSON
chris.johnson@lee-associates.com
626.240.2786
License ID 01934154

All information furnished regarding property for sale, rental or financing is from sources deemed reliable, but no warranty or representation is made to the accuracy thereof and same is submitted to errors, omissions, change of price, rental or other conditions prior to sale, lease or financing or withdrawal without notice. No liability of any kind is to be imposed on the broker herein.

LEASE INFORMATION

- + Lease Rate: \$2.25/PSF/FSG
- + Available Size: ±32,000 SF
- + Lot Size: ±72,934 SF
- + Year Built: 1979
- + Parking Ratio: 4.35/1,000
- + Parcel Number: 8447-021-072, 031-047
- + Zoning: C-P

PROPERTY HIGHLIGHTS

- + Great Owner User Opportunity
- + Medical and Dental Use Allowed
- + Recent Upgrades Throughout
- + Abundant Parking
- + Elevator Served
- + Fully Sprinklered
- + Great Access to 10, 57 and 210 freeways
- + Located right off the Holt exit on the 10 freeway



FOR LEASE
OFFICE | MEDICAL OFFICE IN COVINA

1373
CENTER COURT DRIVE
COVINA, CA 91724

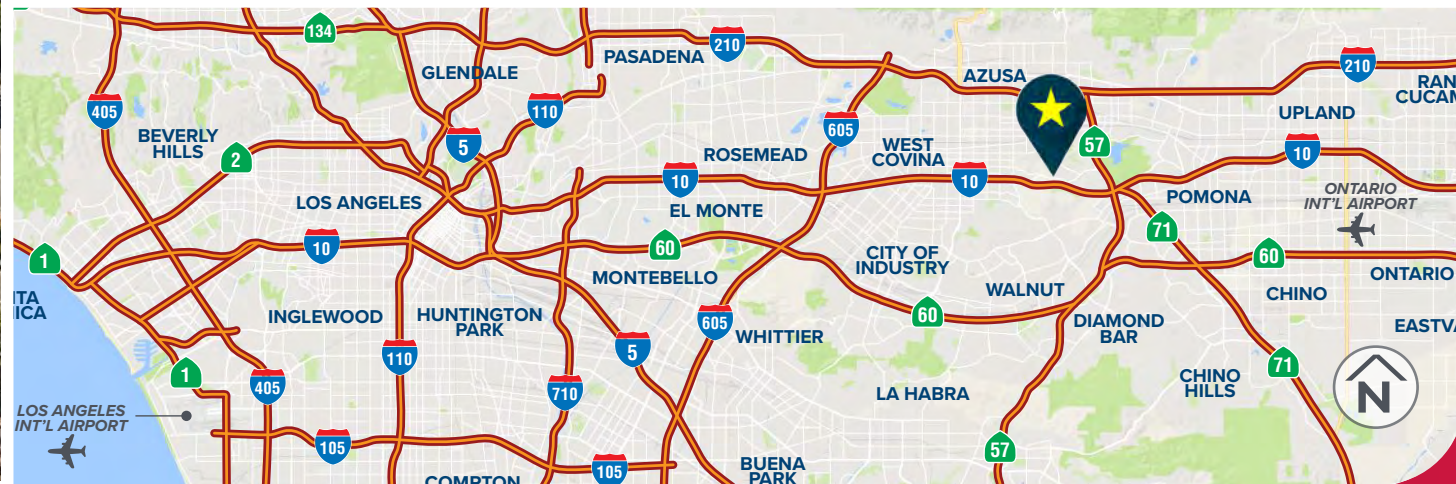
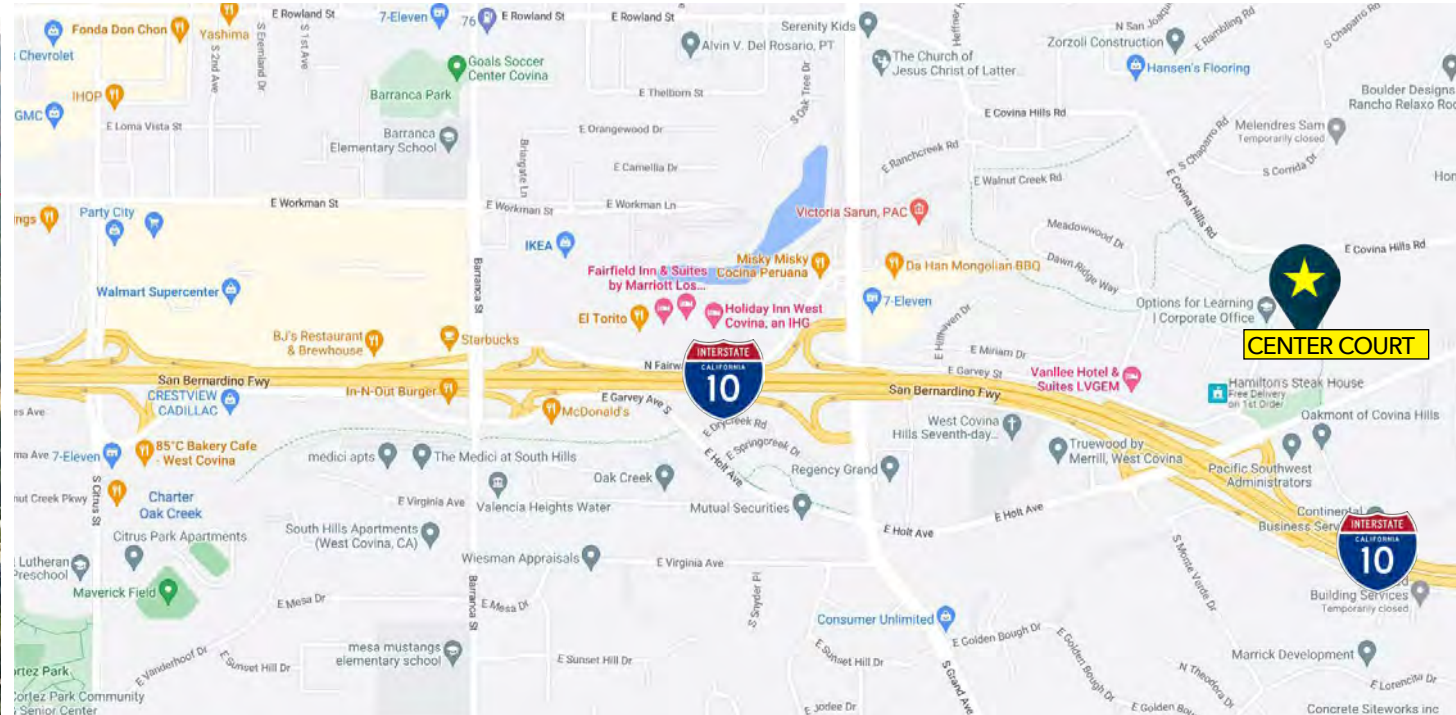
AERIAL PHOTOS



FOR LEASE
OFFICE | MEDICAL OFFICE IN COVINA

1373
CENTER COURT DRIVE
COVINA, CA 91724

PROPERTY LOCATION



FOR LEASE
OFFICE | MEDICAL OFFICE IN COVINA

1373
CENTER COURT DRIVE
COVINA, CA 91724

1ST FLOOR PHOTOS



FOR LEASE
OFFICE | MEDICAL OFFICE IN COVINA

1373
CENTER COURT DRIVE
COVINA, CA 91724

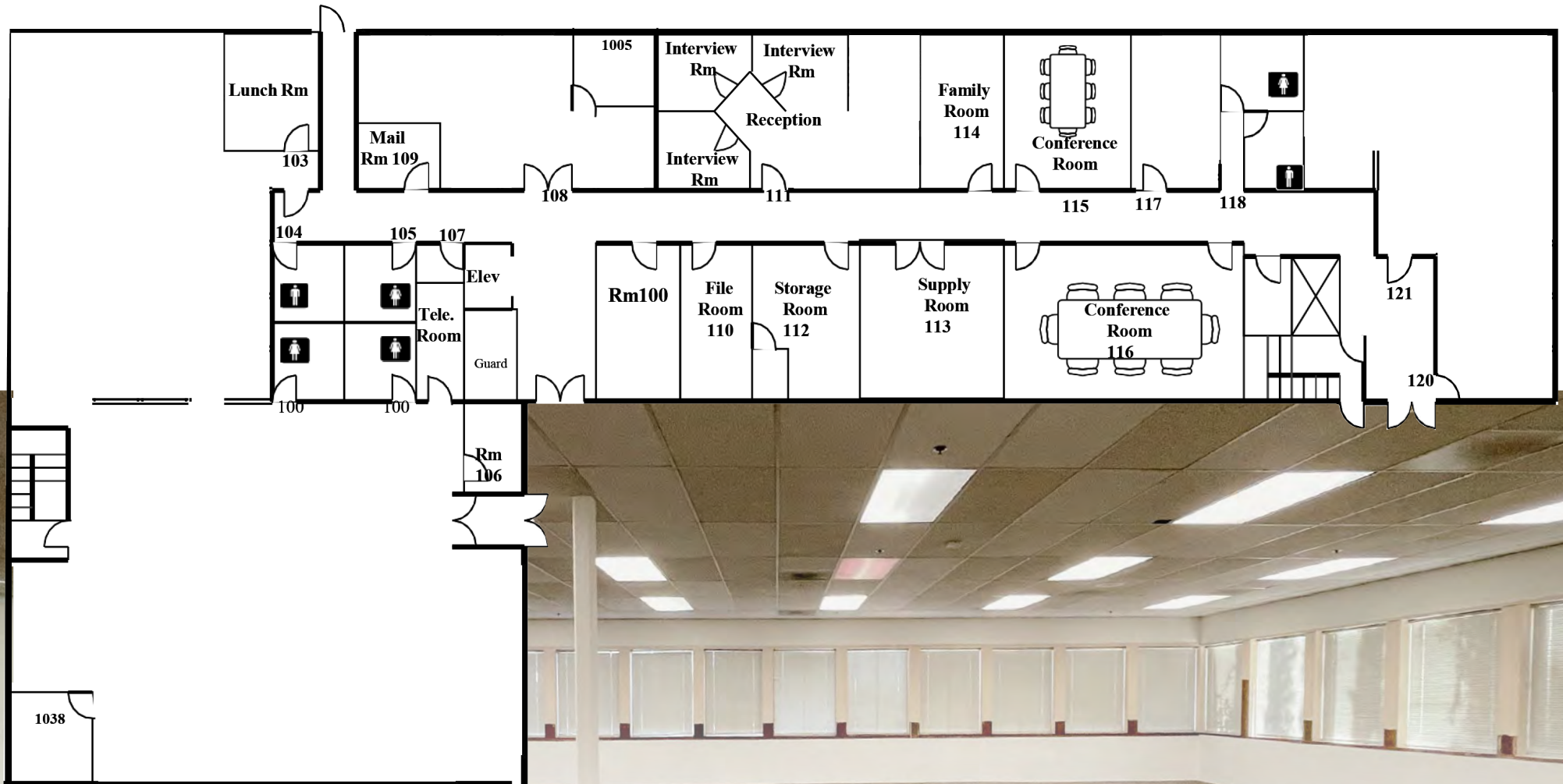
2ND FLOOR PHOTOS



FOR LEASE
OFFICE | MEDICAL OFFICE IN COVINA

1373
CENTER COURT DRIVE
COVINA, CA 91724

1ST FLOOR - FLOOR PLAN



FOR LEASE
OFFICE | MEDICAL OFFICE IN COVINA

1373
CENTER COURT DRIVE
COVINA, CA 91724

2ND FLOOR - FLOOR PLAN

