

# 162-164 Clara Street

South of Market, San Francisco

## Warehouse with Large Yard



**URBANGROUP**  
REAL ESTATE

Priced at \$1,250,000

Warehouse: +/- 2,000 Sq Ft

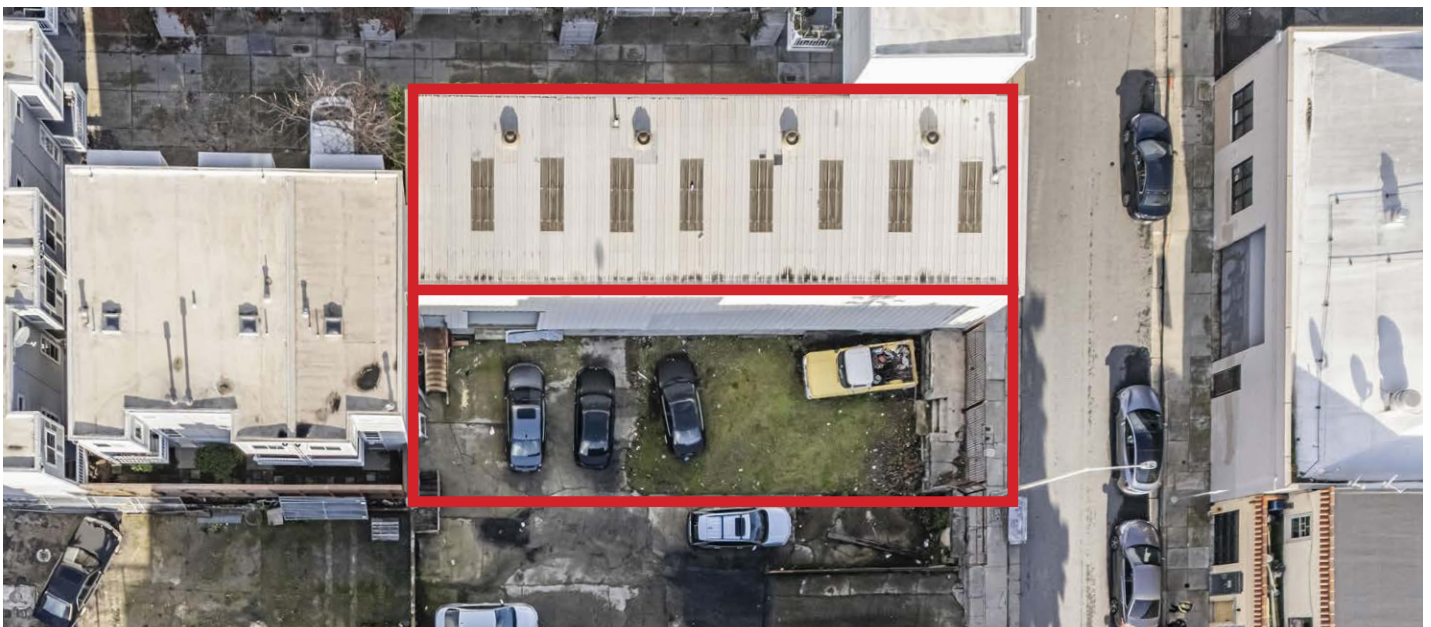
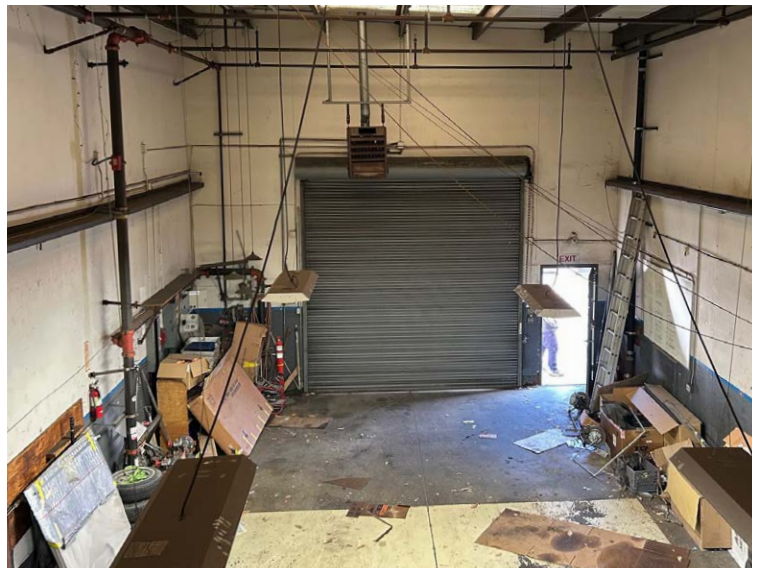
Parcels: 4,000 Sq Ft

APN: 3752-051 & 3752-052

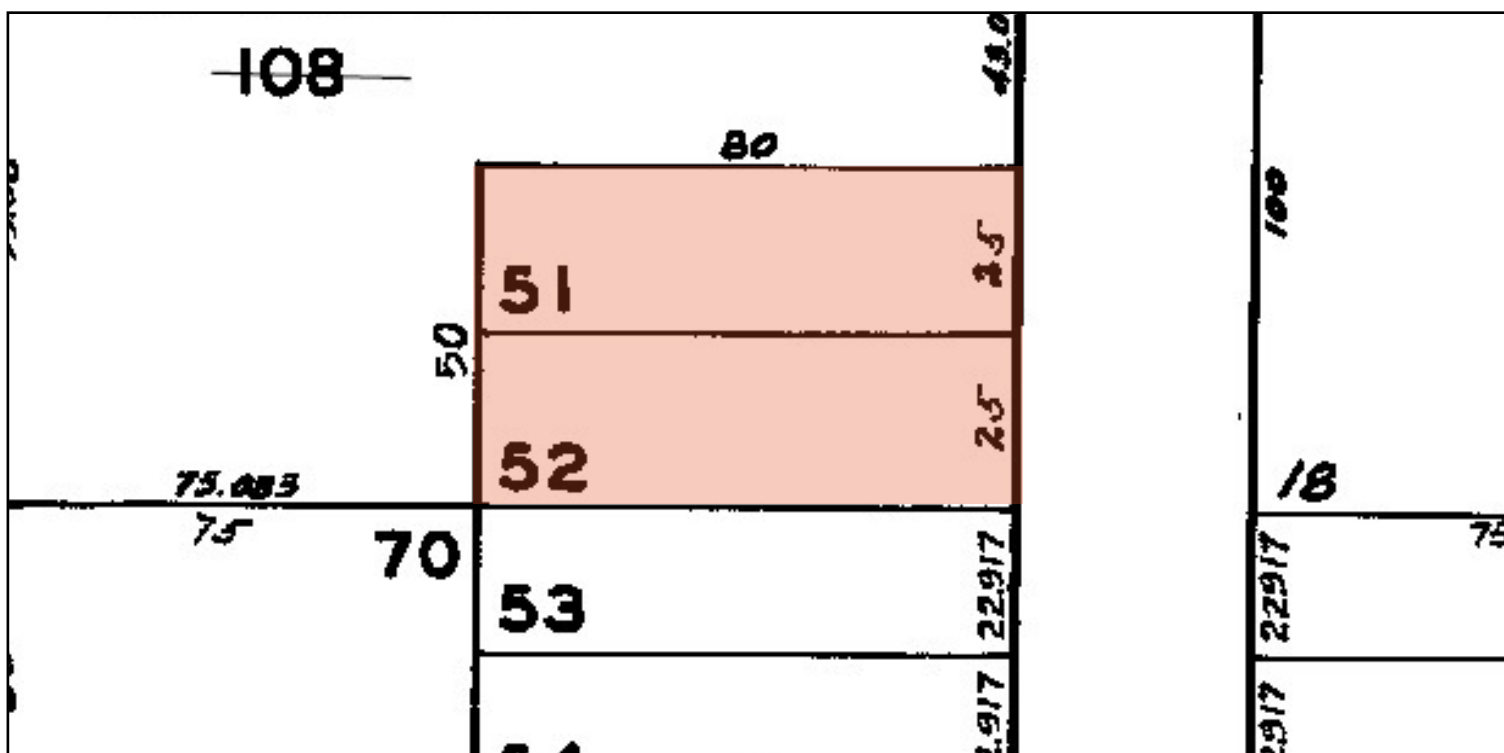
Clear Height: 20'

Year Built: 1991

Zoning: MUR - Mixed-Use Residential



- ✓ Great SOMA Location
- ✓ Easy Access to all parts of San Francisco
- ✓ Fully Sprinklered
- ✓ 3-Phase Power
- ✓ Roll-up Door





SoMa (South of Market) is a dynamic and versatile San Francisco neighborhood, blending urban living, culture, and innovation. Known for its central location, it offers a mix of residential, commercial, and industrial spaces, with excellent transit access to BART, Muni, Caltrain and major freeways. Home to tech startups, creative industries, and cultural landmarks like SFMOMA and Yerba Buena Gardens, SoMa buzzes with activity while offering quiet retreats on its mixed-use streets. The area features diverse dining, nightlife, and housing options, making it ideal for growth, creativity, and connection at the heart of the city.

**URBANGROUP**  
REAL ESTATE

**LOUIS CORNEJO**

O: 415.863.1775

C: 415.786.3662

[louis@urbangroupsf.com](mailto:louis@urbangroupsf.com)

DRE 01518102

The information contained herein has been secured from sources believed to be reliable, but we make no representations, warranties, express or implied, as to the accuracy of the information. All information should be verified prior to consummating any transaction.