



REAL ESTATE COMPANY

INDUSTRIAL | OFFICE | COMMERCIAL  
BROKERAGE & DEVELOPMENT  
ESTABLISHED 1950

# 14850 WEST 101ST TERRACE LENEXA, KS



## 54,035 SF FOR LEASE OFFICE AND WAREHOUSE BUILDING

### FEATURES

- 5,345 SF office area
- 22' clear ceiling height
- 4 dock-high doors
- 1 ramped drive-in door
- New roof, HVAC and parking lot
- ESFR sprinkler system in warehouse
- 2 HVLS fans
- 100% air-conditioned
- LED lighting
- 2000 amps - 480/277 volts  
3-phase power
- Prime JOCO location
- Great access to I-35 and I-435
- Available immediately

**BASE RATE:**  
**\$6.25/SF NNN**

**NET CHARGES (2024):**  
Taxes: \$1.58/SF  
Insurance: \$0.17/SF  
CAM: Self-performed  
by Tenant

THE BARNEY BUILDING  
2000 SHAWNEE MISSION PARKWAY  
SUITE 400  
MISSION WOODS, KS 66205

For more information  
please contact

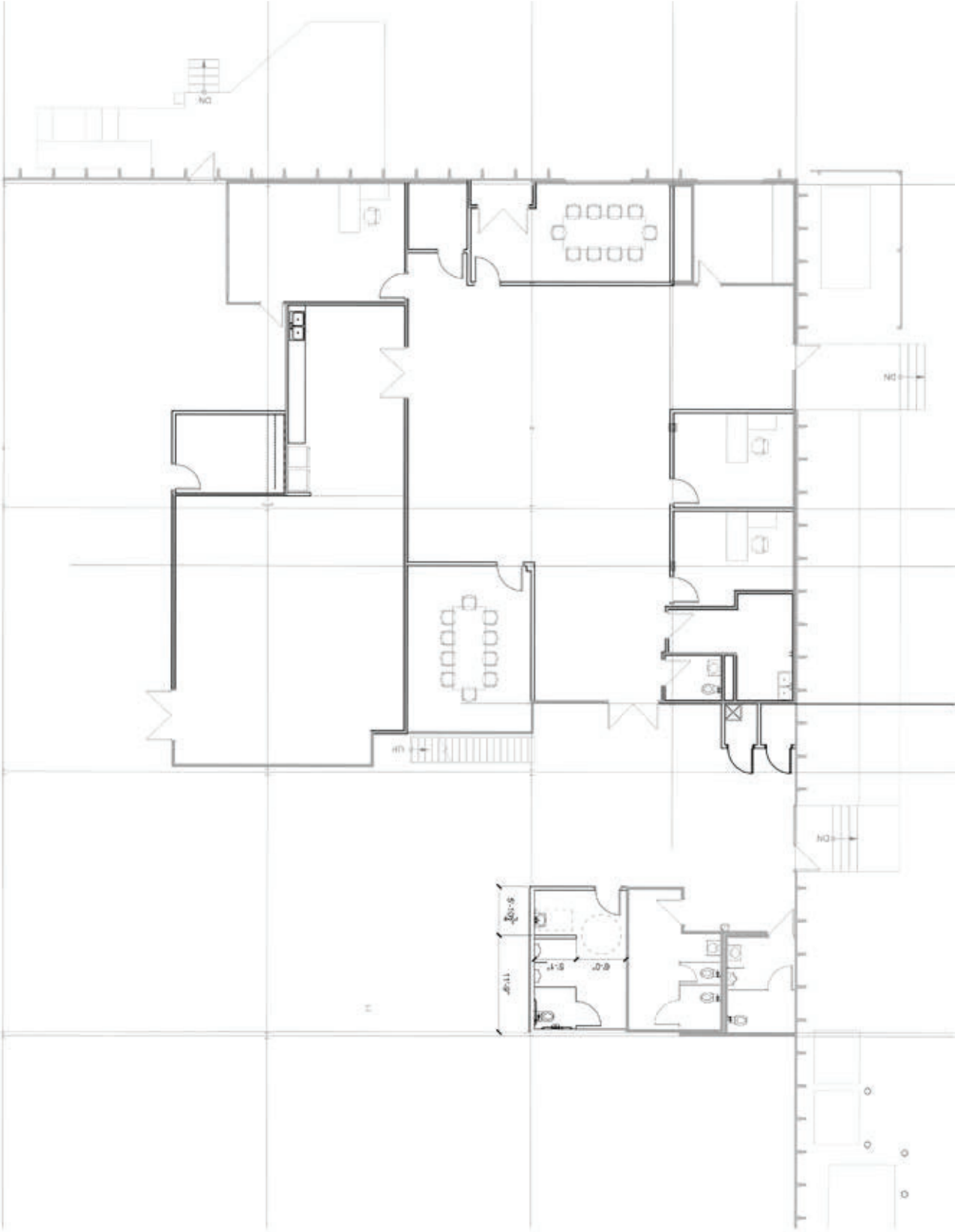
**JOHN DELZER**  
[jd@karbank.com](mailto:jd@karbank.com)

**PAUL FOGEL, SIOR**  
[pf@karbank.com](mailto:pf@karbank.com)

816.221.4488  
816.221.4494

[KARBANK.COM](http://KARBANK.COM)

Information furnished regarding property is from sources deemed reliable but no warranty or representation is made as to the accuracy thereof and same is submitted subject to errors, omissions, prior sale or lease or withdrawal without notice.



<div><div><div>KARBANK</div><div>REAL ESTATE COMPANY</div><div>THE BARNEY BUILDING 2000 SHAWNEE MISSION PARKWAY   SUITE 400 MISSION WOODS, KANSAS 66205 KARBANK.COM</div></div></div>	ADDRESS 14850 W. 101st Terrace Lenexa, KS		DATE 8-19-2025		<div><div>N</div></div>
	PLAN TYPE Office Floor Plan		TOTAL SF 54,305 SF	TOTAL OFFICE SF 5,345 SF	