

# GRAND RIVER AVE

FORMER RITE AID W/DRIVE-THRU



1664 W Grand River Ave  
Okemos, MI 48864



**Retail Opportunity**  
11,068 ± SF

**FOR LEASE**

# PROPERTY HIGHLIGHTS



## Description

Freestanding former Rite Aid with drive-thru available for lease in Okemos, MI. Located at the corner of Grand River Avenue and Central Park Drive, this property benefits from outstanding visibility, easy access and is positioned within a well-established, high-income market.

## Address

1664 W Grand River Ave  
Okemos, MI 48864

## Asking Rate

Contact Broker

## Features

- 11,068 ± SF Freestanding Building
- Existing Drive-Thru
- Multiple Curb Cuts
- Land Area: 1.87 Acres
- Zoning: C-3 Commercial
- Affluent Residential Demographics

## Traffic Counts

Grand River Ave - 15,037+ cpd  
Central Park Dr - 8,468+ cpd  
Marsh Rd - 15,427+ cpd

## Demographics

	1 MILE	3 MILES	5 MILES
POPULATION:	6,033	47,127	97,048
HOUSEHOLDS:	2,481	17,964	35,398
AVG. HOUSEHOLD INCOME:	\$164,640	\$132,808	\$117,982
DAYTIME POPULATION:	5,770	33,370	68,500

## Surrounding Tenants



The information contained herein has been obtained through sources deemed reliable by On Q Commercial Real Estate but cannot be guaranteed for its accuracy. We recommend to the buyer or lessee that any information, which is of special interest, should be obtained through independent verification. ALL MEASUREMENTS ARE APPROXIMATE.



# MICRO AERIAL



The information contained herein has been obtained through sources deemed reliable by On Q Commercial Real Estate but cannot be guaranteed for its accuracy. We recommend to the buyer or lessee that any information, which is of special interest, should be obtained through independent verification. ALL MEASUREMENTS ARE APPROXIMATE.

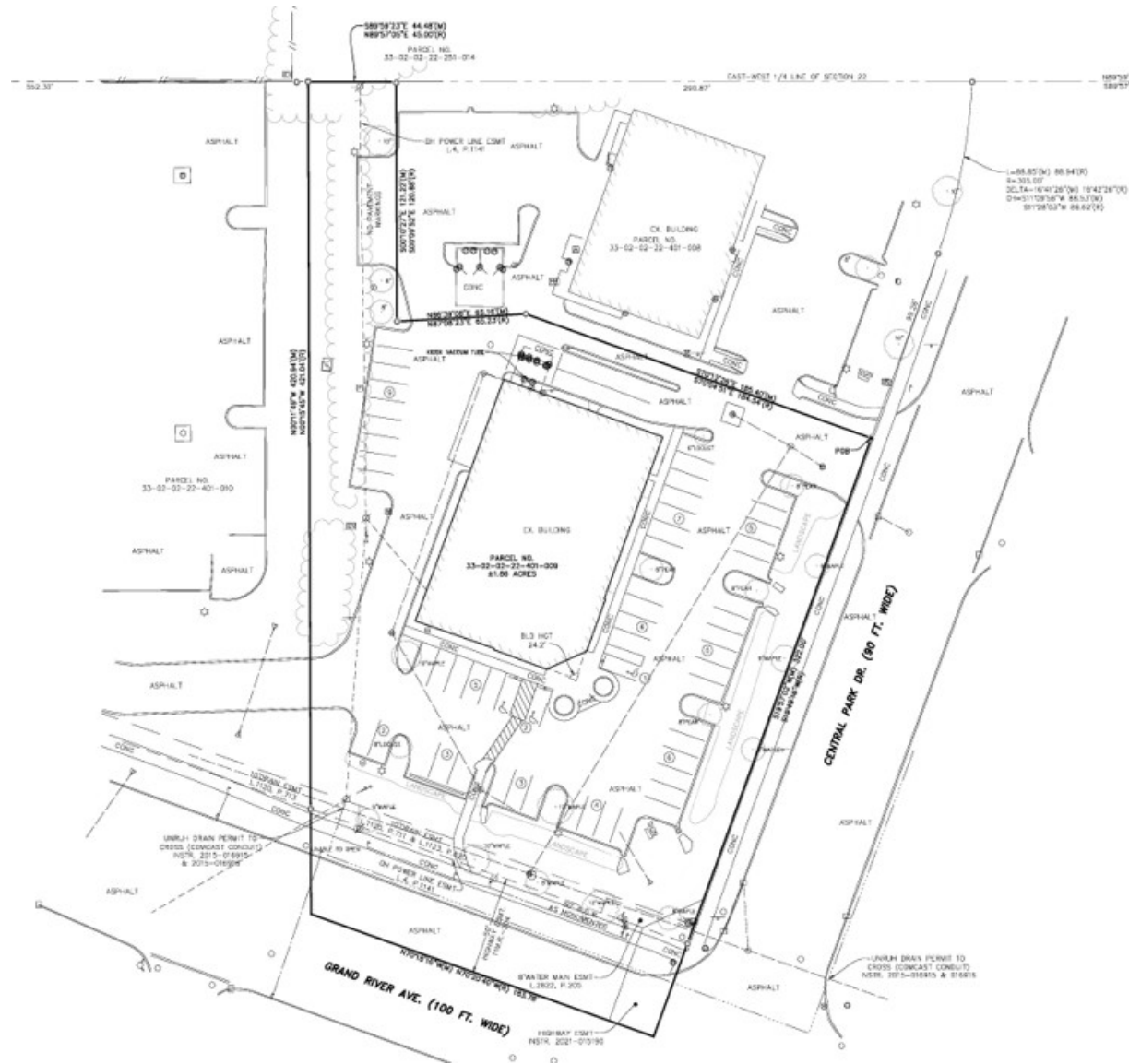


# MACRO AERIAL



The information contained herein has been obtained through sources deemed reliable by On Q Commercial Real Estate but cannot be guaranteed for its accuracy. We recommend to the buyer or lessee that any information, which is of special interest, should be obtained through independent verification. ALL MEASUREMENTS ARE APPROXIMATE.

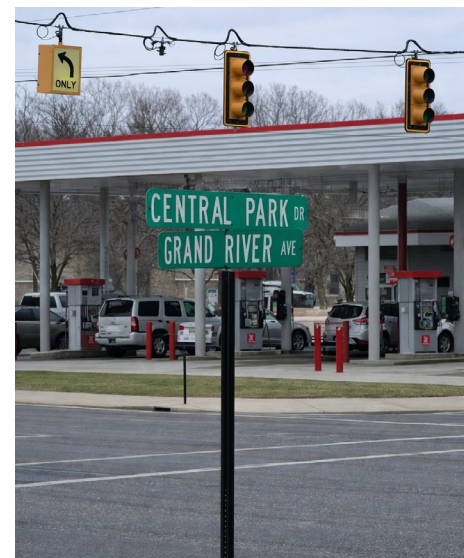




The information contained herein has been obtained through sources deemed reliable by On Q Commercial Real Estate but cannot be guaranteed for its accuracy. We recommend to the buyer or lessee that any information, which is of special interest, should be obtained through independent verification. ALL MEASUREMENTS ARE APPROXIMATE.

PHOTOS

# GRAND RIVER AVE



The information contained herein has been obtained through sources deemed reliable by On Q Commercial Real Estate but cannot be guaranteed for its accuracy. We recommend to the buyer or lessee that any information, which is of special interest, should be obtained through independent verification. ALL MEASUREMENTS ARE APPROXIMATE.



INTERIOR PHOTOS

# GRAND RIVER AVE



The information contained herein has been obtained through sources deemed reliable by On Q Commercial Real Estate but cannot be guaranteed for its accuracy. We recommend to the buyer or lessee that any information, which is of special interest, should be obtained through independent verification. ALL MEASUREMENTS ARE APPROXIMATE.



OnQ  
COMMERCIAL  
REAL ESTATE

**JOE QONJA**

Principal Broker

C: (248) 977-7799

O: (248) 712-3300

E: [joe@onqcre.com](mailto:joe@onqcre.com)

**LEO ALLUS**

Associate

C: (248) 321-3325

O: (248) 712-3300

E: [leo@onqcre.com](mailto:leo@onqcre.com)

100 W. Long Lake Rd. Suite 122 Bloomfield Hills, MI 48304

**[www.onqcre.com](http://www.onqcre.com)**

The information contained herein has been obtained through sources deemed reliable by On Q Commercial Real Estate but cannot be guaranteed for its accuracy. We recommend to the buyer or lessee that any information, which is of special interest, should be obtained through independent verification. ALL MEASUREMENTS ARE APPROXIMATE.