

# For Lease

309-319 W Landis Avenue  
Vineland, New Jersey

100 - 5,061 SF  
Office/Retail Space

**Grisela Flores**

Broker of record - CEO

908-220-7865

[grisela@florostone.com](mailto:grisela@florostone.com)



**FLOROSTONE REALTY**  
BEST PROPERTIES IN NEW JERSEY



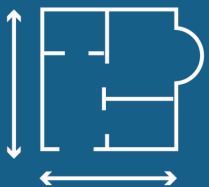
# Property Overview



## Property Highlights



FLOROSTONE REALTY  
BEST PROPERTIES IN NEW JERSEY



2,261 SF space  
available



Located in Main Street  
district of historic  
Downtown Vineland



B-1 Zoning permits  
various office and  
retail uses



Ample parking  
available with 61  
surface spaces



Monument  
signage available



## Nearby Retailers



Landis Ave (12,512 VPD)

## Demographics

1 mile



**14,680**  
people



**\$59,738**  
average  
HHI



**4,867**  
household  
s



**7,731**  
employee  
s

3 mile



**44,917**  
people



**\$78,341**  
average  
HHI



**16,167**  
household  
s



**21,049**  
employee  
s

5 mile



**66,250**  
people



**\$90,081**  
average  
HHI



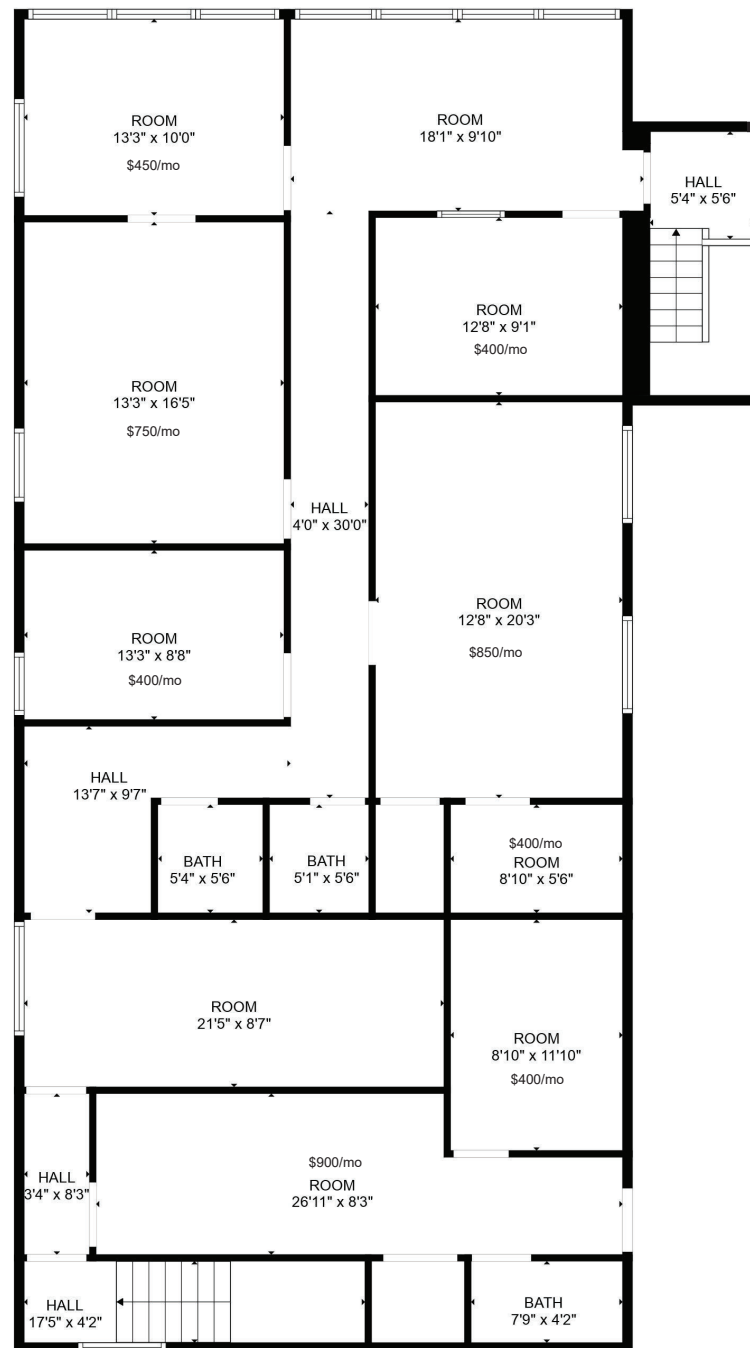
**24,411**  
household  
s



**33,903**  
employee  
s



309 W Landis Ave  
Vineland, NJ



## Unit 6

Total Area: 2,332SF

***Also Available as  
Independent Offices  
starting at 100SF***



MEASUREMENTS DEEMED HIGHLY RELIABLE BUT NOT GUARANTEED.



# 319 W. LANDIS VINELAND NJ OFFICE SPACE

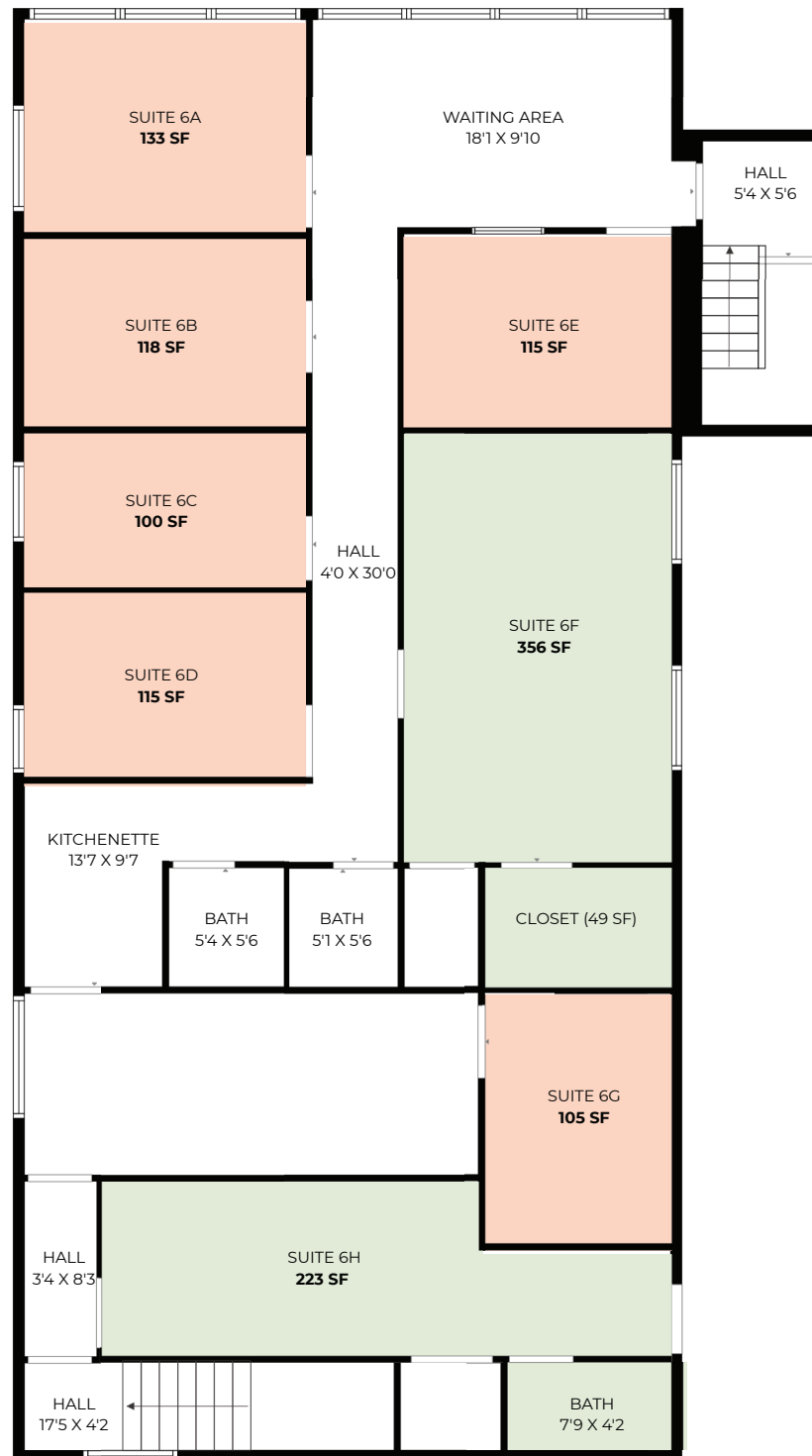
## FEATURES:

- Second Floor
- Move-In Ready
- Prices starting at \$300 per month!

## AMENITIES

- ✓ High-Speed WiFi Included
- ✓ Shared Kitchenette Access
- ✓ PROFESSIONAL Waiting Areas

Our offices feature thoughtfully designed amenities, including a shared kitchenette, reliable high-speed internet, and a professional waiting area that elevates the client experience.



## OFFICE TYPE



PREMIUM  
\$700 - \$825



STANDARD  
\$350 - \$400

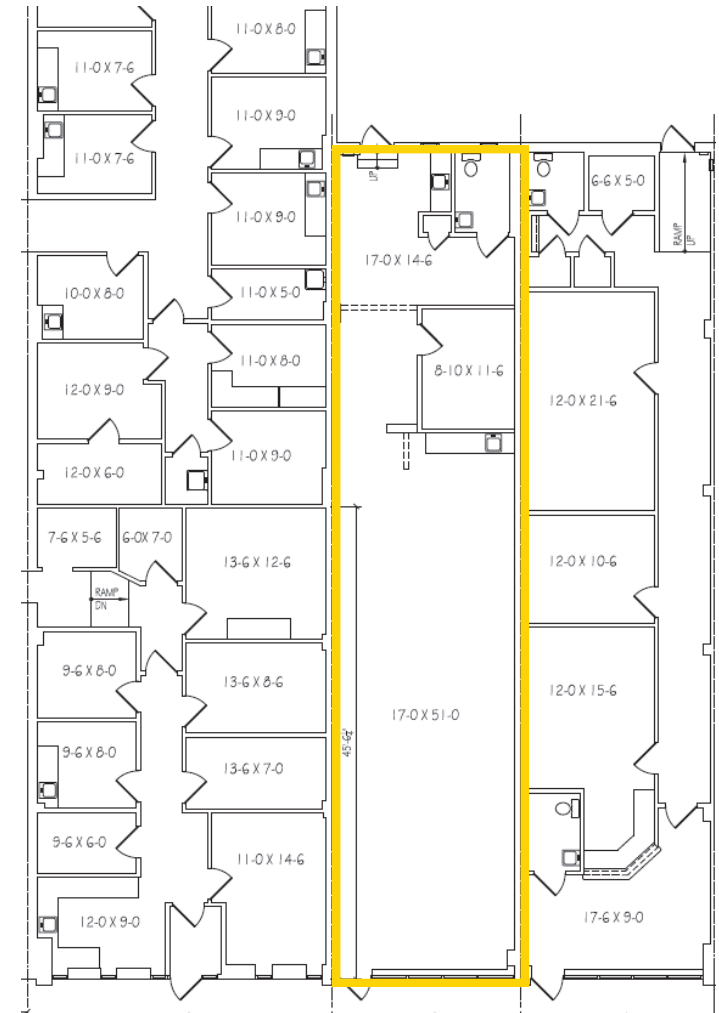


# Indoor Pictures





# Unit 3



Total Area: 1,465SF

MEASUREMENTS DEEMED HIGHLY RELIABLE  
BUT NOT GUARANTEED.





**Grisela Flores**

Broker of record - CEO

908-220-7865

[grisela@florostone.com](mailto:grisela@florostone.com)