



342

WEST 14TH STREET

Between Eighth  
& Ninth Avenues

FOR SALE OR LEASE

A large circular graphic with a dotted border. Inside the circle, the text is centered and reads: "342" in a large serif font, "WEST 14TH STREET" in a bold sans-serif font, a horizontal dotted line, "Between Eighth & Ninth Avenues" in a sans-serif font, and "FOR SALE OR LEASE" in a bold sans-serif font.

342

**WEST 14TH STREET**

.....

Between Eighth  
& Ninth Avenues

**FOR SALE OR LEASE**

A large circular graphic with a dotted border. Inside the circle, the text is centered and reads: "342" in a large serif font, "WEST 14TH STREET" in a bold sans-serif font, a horizontal dotted line, "Between Eighth & Ninth Avenues" in a sans-serif font, and "FOR SALE OR LEASE" in a bold sans-serif font.

342

**WEST 14TH STREET**

.....

Between Eighth  
& Ninth Avenues

**FOR SALE OR LEASE**

A large circular graphic with a dotted border. Inside the circle, the text is centered and reads: "342" in a large serif font, "WEST 14TH STREET" in a bold sans-serif font, a horizontal dotted line, "Between Eighth & Ninth Avenues" in a sans-serif font, and "FOR SALE OR LEASE" in a bold sans-serif font.

342

**WEST 14TH STREET**

.....

Between Eighth  
& Ninth Avenues

**FOR SALE OR LEASE**



## Details

• Ground Level	<b>1,151 Square Feet</b>
• Lower Level	<b>1,043 Square Feet</b>
• Frontage	<b>20'</b>
• Ceiling Height	<b>11'</b>
• Term	<b>Negotiable</b>
• Possession	<b>Arranged</b>
• Asking Rent	<b>\$15,000</b>
• Asking Price	<b>\$1.8 Million</b>

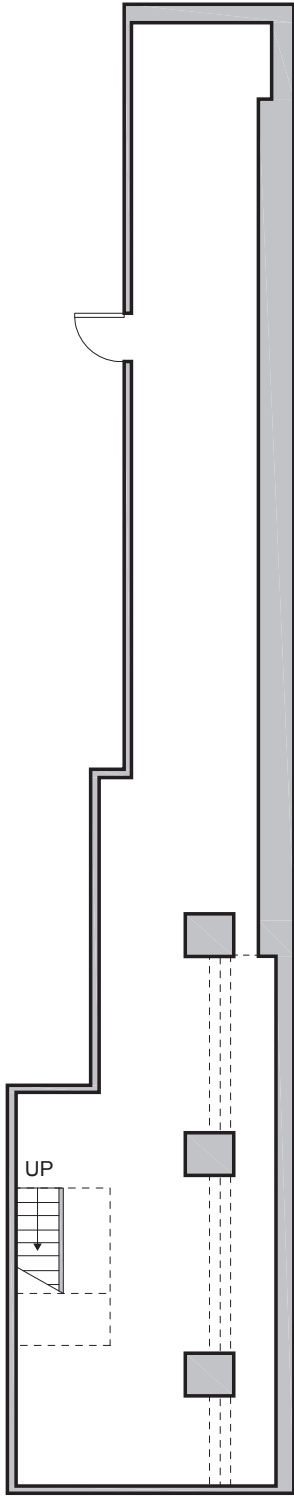
## Features

- High traffic location on a major two-way street on the cusp of the Meatpacking District
- Fantastic exposure with all glass frontage
- Perfect for salon, spa, fashion tenant, take-away or sandwich shop
- Tremendous national and international tourist traffic
- Please note: No food or alcohol for on-premises consumption is allowed but is otherwise allowed for off-site consumption

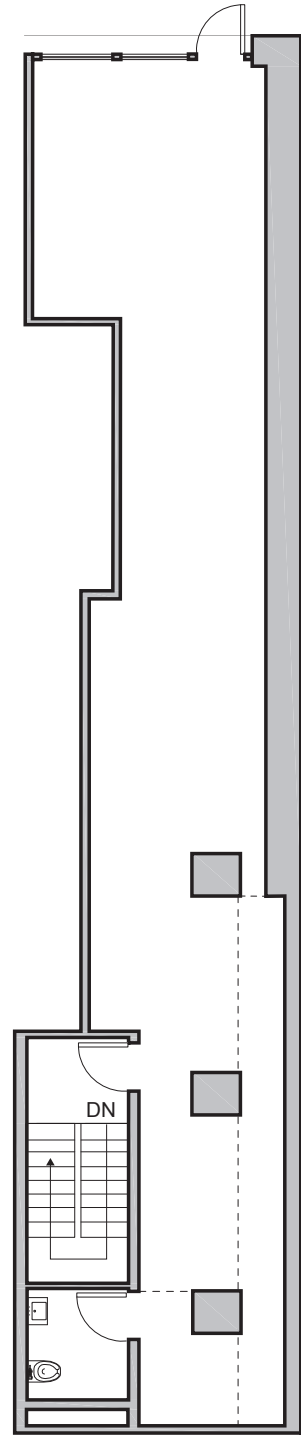








RETAIL UNIT, FLOOR 1, LOWER LEVEL  
1,043 ft<sup>2</sup>



RETAIL UNIT, FLOOR 1, UPPER LEVEL  
1,151 ft<sup>2</sup>



# PLEASE CONTACT

JAMIE KLEINBAUM

Exclusive RE Broker

917.797.0480

[jkleinbaum@aol.com](mailto:jkleinbaum@aol.com)

