

FOR LEASE

1001 | Charles St. Suite 201 & 202

FREDERICKSBURG, VA 22401



SPECIFICATIONS

Size: 551 - 1,446 SF

Pricing: \$3,290.00/mo

Zoning: CD

Available: 2/1/2025

OVERVIEW



J R A

Discover elegance in the heart of Downtown Fredericksburg at our office located at 1001 Charles St. Enjoy a central location amidst historic charm, providing an inspiring space for productivity. Welcome to a new standard of work-life balance at 1001 Charles St.



- Beautiful 2nd floor office space in the heart of Downtown Fredericksburg
- Multiple offices with high ceilings
- Walking distance to the Fredericksburg VRE Station
- Surrounded by commercial and retail users
- Natural light throughout suite
- Newly renovated interior & exterior
- Tenant is responsible for electricity, natural gas, trash, and internet/cable services.

FLOORPLAN



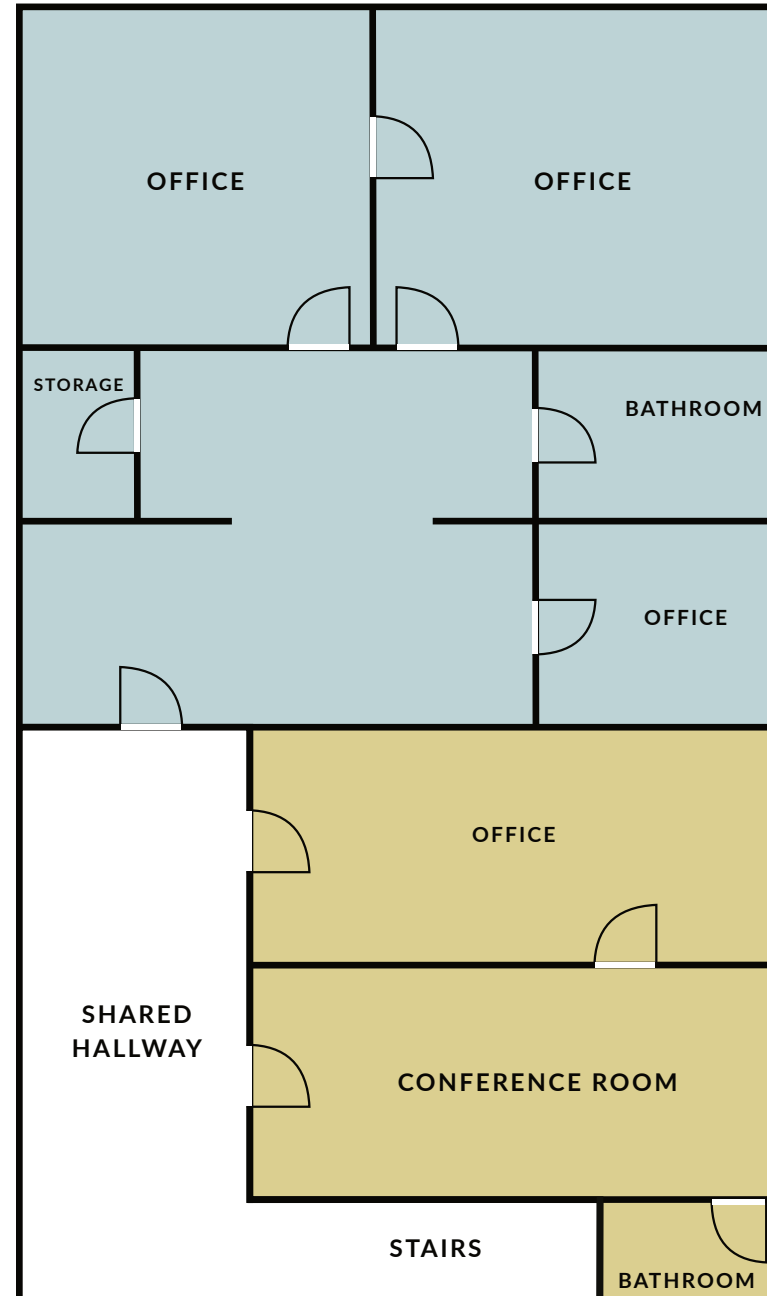
J R A

BLUE

Suite 202: \$1,995/mo

YELLOW

Suite 201: \$1,295/mo



INTERIOR IMAGES



MAP VIEW



J R A



SITE

Gari Melchers Home and Studio

Falmouth

Falmouth Beach

Dahlgren Junction

Fredericksburg Convention Center

Wegmans

Metro by T-Mobile

Mary Washington Hospital

John Lee Pratt Park

Brookfield

INTERSTATE 95

EAGLE VILLAGE

SITE

Kenmore Inn

The Publisher, Downtown Fredericksburg, a Tribu...

Courtyard Fredericksburg Historic District

ROUTE 1

COLLEGE HEIGHTS

Best Western Fredericksburg

Fredericksburg and Spotsylvania...

George Washington's Ferry Farm

Spotsylvania Towne Centre

Alum Spring Park

ARGYLE HEIGHTS

Walmart Supercenter

Catfish Kelly's in Fredericksburg

DEMOGRAPHIC/ INCOME REPORT



J R A

INCOME	2 mile	5 mile	10 mile
Avg Household Income	\$101,037	\$107,418	\$117,914
Median Household Income	\$80,705	\$85,569	\$97,504
< \$25,000	1,753	4,723	7,526
\$25,000 - 50,000	1,610	5,863	11,229
\$50,000 - 75,000	1,601	6,569	11,070
\$75,000 - 100,000	1,880	5,569	10,754
\$100,000 - 125,000	883	4,208	9,754
\$125,000 - 150,000	632	2,789	7,586
\$150,000 - 200,000	1,450	5,440	11,395
\$200,000+	977	3,858	9,697

POPULATION	2 mile	5 mile	10 mile
2010 Population	25,454	89,258	182,791
2022 Population	27,169-	106,654	227,956
2027 Population Projection	26,942	110,714	240,445
Annual Growth 2010-2022	0.5%	1.5%	1.9%
Annual Growth 2022-2027	-0.2%	0.8%	1.1%
Median Age	34	36.1	37
Bachelor's Degree or Higher	40%	36%	35%
U.S. Armed Forces	137	584	1,967

FOR MORE INFORMATION PLEASE CONTACT:



Heather Hagerman

📞 540-429-2429 (Cell)

📞 540-372-7675 (Office)

✉ hagerman@johnsonrealtyadvisors.com



Fitzhugh Johnson III

📞 540-623-4565 (Cell)

📞 540-372-7675 (Office)

✉ fjohnson3@johnsonrealtyadvisors.com



Andrew Hall

📞 540-656-3515 (Cell)

📞 540-372-7675 (Office)

✉ Andrew@johnsonrealtyadvisors.com



JOHNSON

REALTY

ADVISORS

All information contained herein was made based upon information furnished to us by the owner or from sources we believe are reliable. While we do not doubt its accuracy, we have not verified it and we do not make any guarantee, warranty or representation about it. The property offered is subject to prior sale, lease, change of price or withdrawal from the market without notice.