



POST OFFICE DEVELOPMENT

1190 MAIN STREET WEST WARWICK

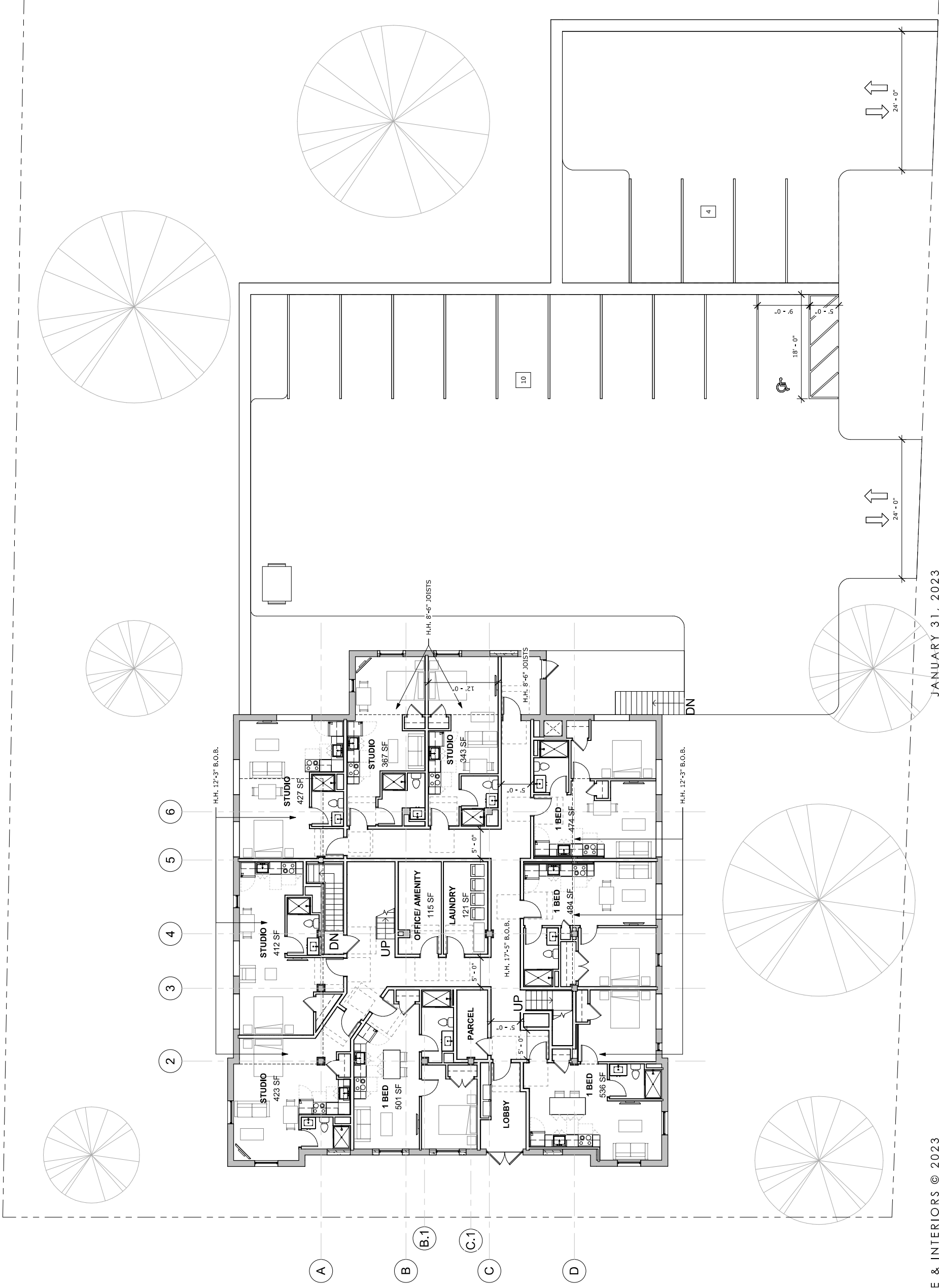
CONCEPTUAL DESIGN OPTIONS | JANUARY 31, 2024

ZDS

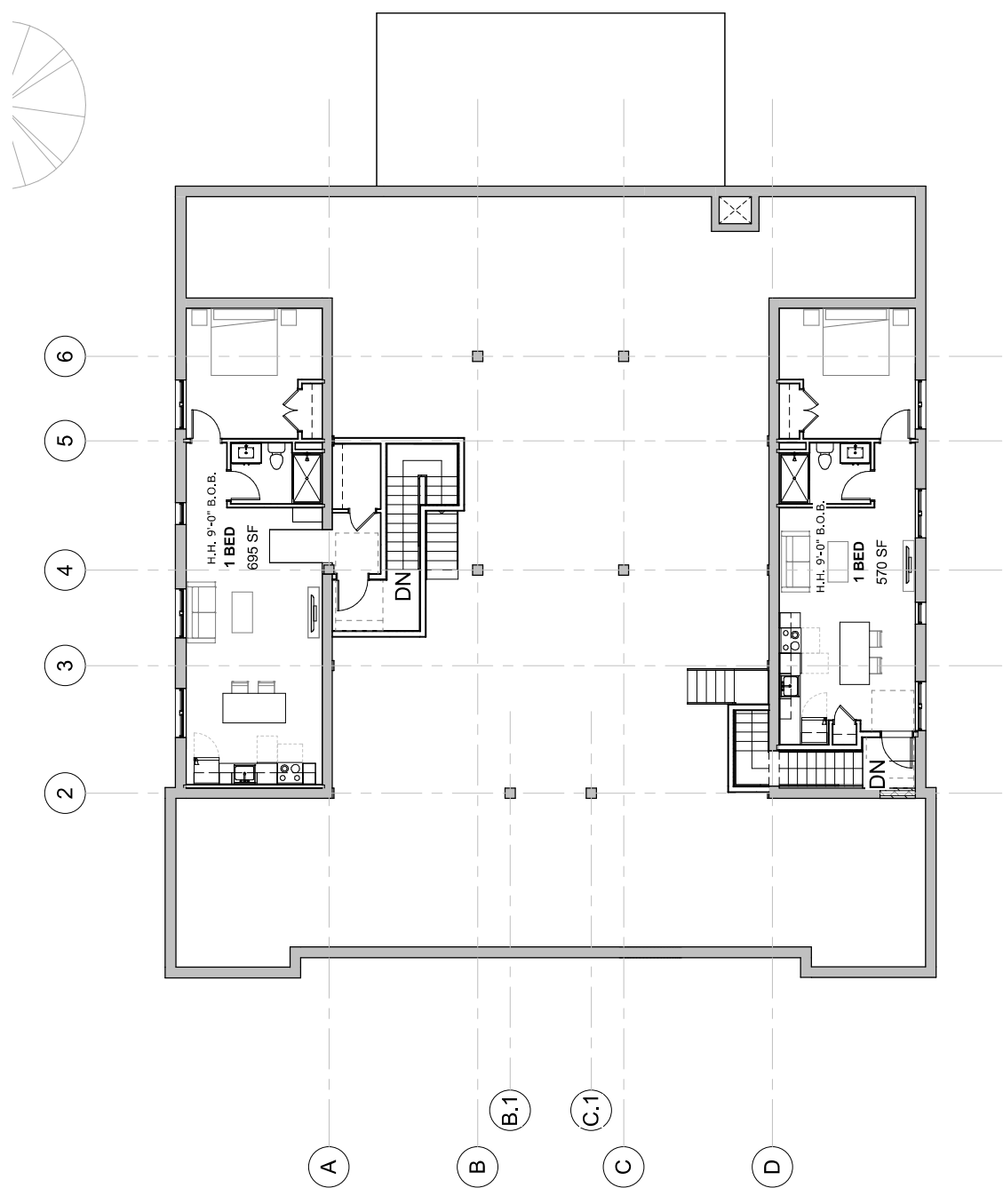
POST OFFICE LAYOUT OPTION

13 UNITS (STUDIOS & 1 BEDS)

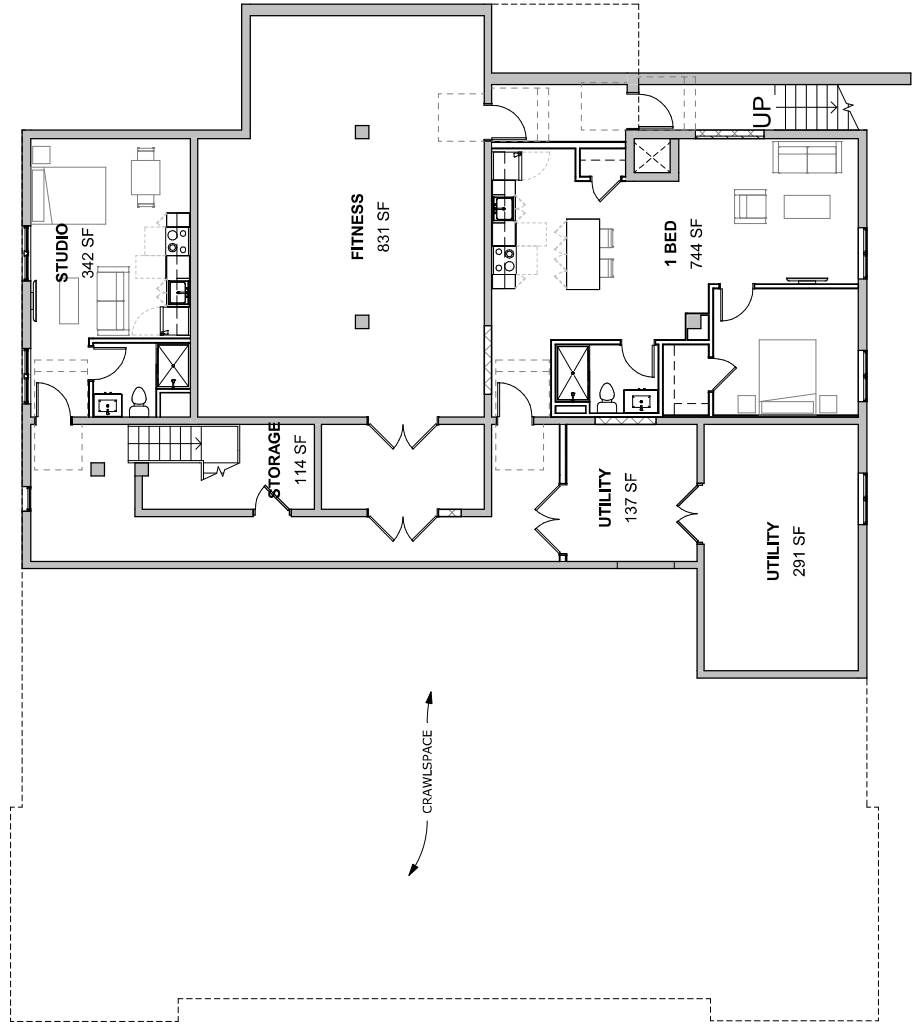
FLOOR PLANS
GROUND LEVEL



BASEMENT & MEZZANINE LEVEL



MEZZANINE LEVEL



BASEMENT LEVEL